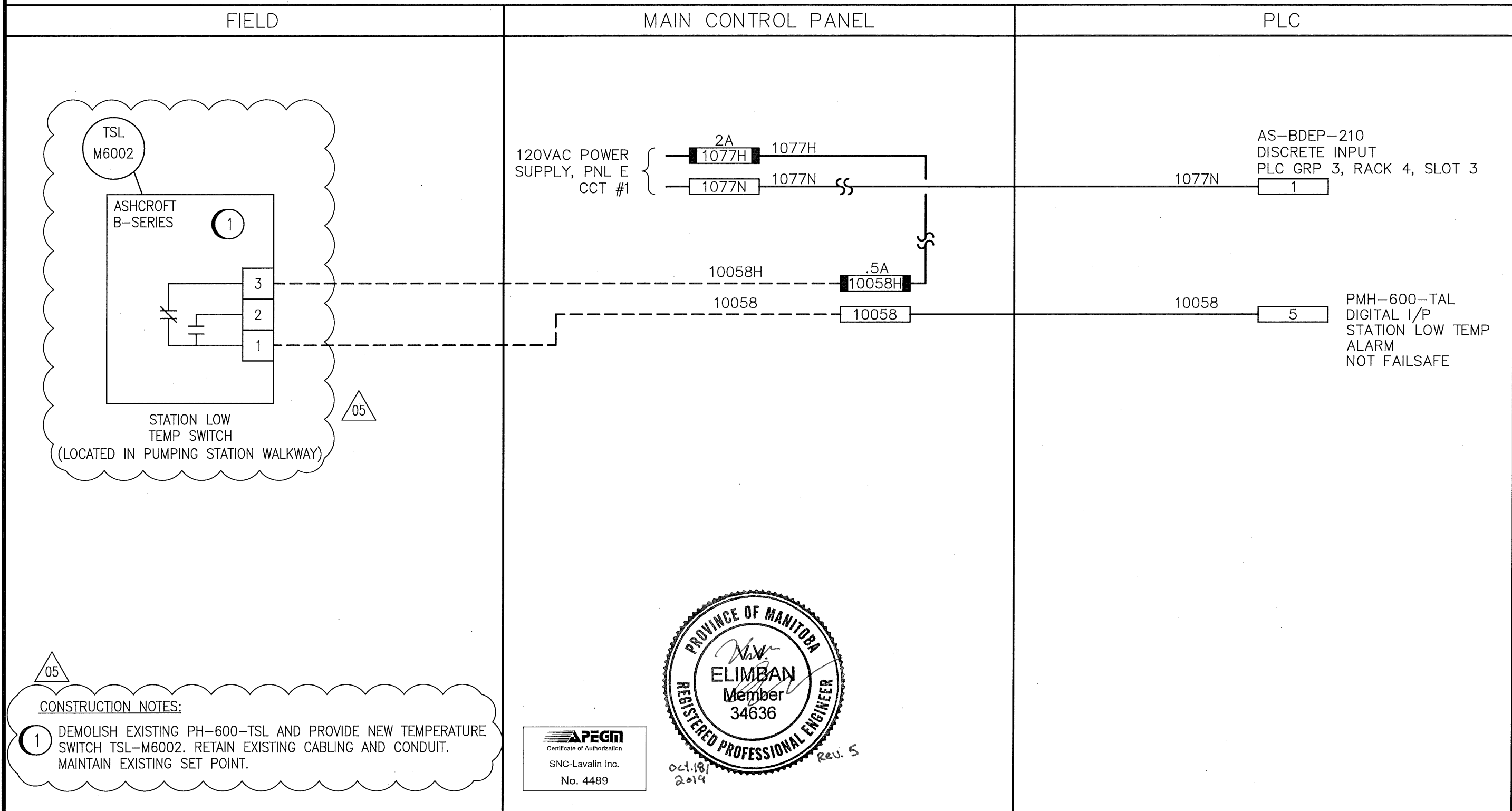


# INSTRUMENT LOOP DIAGRAM



**CONSTRUCTION NOTES:**

① DEMOLISH EXISTING PH-600-TSL AND PROVIDE NEW TEMPERATURE SWITCH TSL-M6002. RETAIN EXISTING CABLING AND CONDUIT. MAINTAIN EXISTING SET POINT.



**NOTE:**  
1. CONTACTS DON'T OPERATE IN FAILSAFE MODE.

ASSOCIATED REFERENCE DRAWINGS:  
1-0640M-A0048

<b>Reid Crowther</b> Consulting Engineers		<b>dp Controls Ltd.</b> Calgary, Alberta		JOB NO. 3153	THE CITY OF WINNIPEG REGIONAL WATER SUPPLY SYSTEM SUPERVISORY CONTROL AND DATA ACQUISITION
19.10.15 5 ISSUED FOR TENDER AND CONSTRUCTION VE		97.02.03 3 RCPL RECORD DRAWING PS		FILENAME D2232	
98.10.30 4 REVISED RECORD DWG. TM		94.07.04 2 AS BUILT PL		McPHILLIPS PUMPING STATION – MCP STATION LOW TEMP SWITCH	
93.12.14 1 RE-ISSUED FOR CONST. PL		DATE REVISION APP. DATE REVISION APP.			

SCALE \_\_\_\_\_  
DATE 94.07.04  
DES PL DWN LGB  
CKD DN APP LK

DRAWING NO.  
**D-2232**