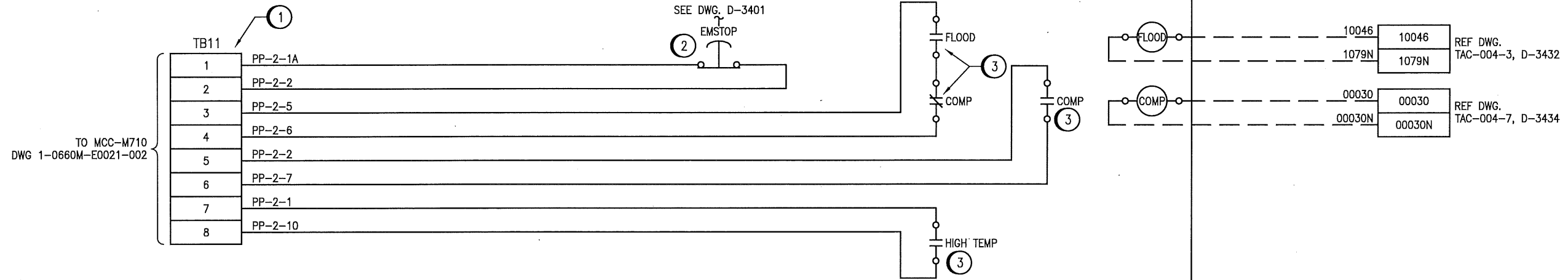


B SIZE - 279mm x 432mm

LAST SAVE: 2019/10/29 - 7:22am
 PATH: M:\661472\4ENG\48IC\DD - General DWG\02 Tache\1-0660M-A0007-001-00.dwg

LCP-2

MAIN CONTROL PANEL



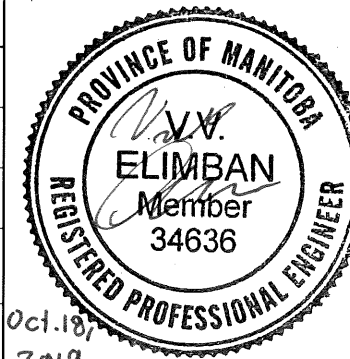
CONSTRUCTION NOTES:

- ① PROVIDE AND INSTALL FEED THROUGH TERMINALS AND REQUIRED ACCESSORIES TO MODIFY LCP-2 PANEL AS SHOWN.
- ② REWIRE EMSTOP SWITCH AS SHOWN. REFER TO DWG. 1-0660M-E0021.
- ③ REWIRE FLOOD, COMP AND HIGH TEMP CONTACTS AS SHOWN. REFER TO DWG. 1-0660M-E0021.



SNC-LAVALIN INC.
 148 Nature Park Way
 Winnipeg, MB, Canada R3P 0X7
 204-786-8080

ENGINEER'S SEAL



THE CITY OF WINNIPEG
 WATER AND WASTE DEPARTMENT

TACHE BOOSTER PUMPING STATION

LOOP DIAGRAM
 LCP-2
 PP-2 ELECTRICAL PUMP DRIVE

NO.	REVISIONS	DATE	DESIGN	CHECK
00	ISSUED FOR TENDER AND CONSTRUCTION	2019/10/18	SB	BC

DESIGNED BY: S. BOGHOSIAN	CHECKED BY: B. CLEVEN
DRAWN BY: J. GRAGASIN	APPROVED BY: D. BECKER
SCALE: NTS	DATE: 2019/09/13
ISSUED FOR CONSTRUCTION	
BY: A. WEISS	DATE: 2019/10/18
CONSULTANT NO.:	

CITY DRAWING NUMBER	SHEET	REV.	SIZE
1-0660M-A0007	001	00	B