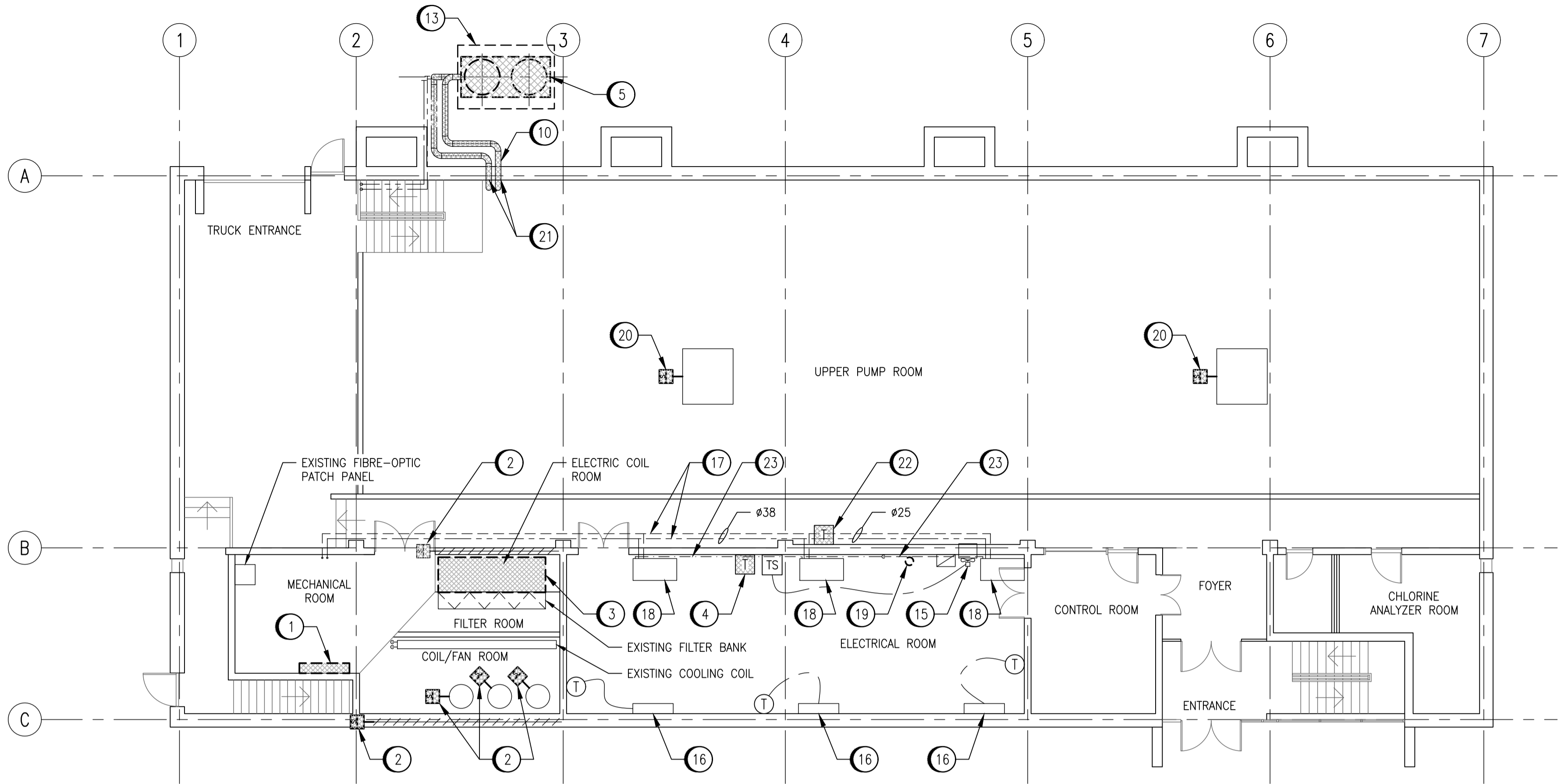


PART PLAN ABOVE ELEVATION 228.295  
SCALE: 1:100



PLAN ABOVE ELEVATION 233.020  
SCALE: 1:100

**DEMOLITION NOTES**

- ① REMOVE EXISTING PNEUMATIC HVAC CONTROL PANEL 1 LOCATED IN THE MECHANICAL ROOM. REMOVE ALL ASSOCIATED DEVICES, SENSORS AND ASSOCIATED COMPRESSED AIR LINES.
- ② REMOVE EXISTING PNEUMATIC DAMPER ACTUATORS AND ASSOCIATED COMPRESSED AIR LINES.
- ③ REMOVE EXISTING ELECTRIC HEATING COIL DH1 IN AIR HANDLING UNIT.
- ④ REMOVE EXISTING CHILLER TEMPERATURE TRANSMITTER TC3 IN THE ELECTRICAL ROOM.
- ⑤ REMOVE EXISTING COOLING TOWER AND ACCESSORIES. SEE GENERAL NOTE 1.
- ⑥ REMOVE EXISTING CHILLER, AND ACCESSORIES. REFRIGERANT RECLAIM IS BY THE CITY. SEE GENERAL NOTE 1. REMOVE EXISTING CONCRETE HOUSEKEEPING PAD. CONTRACTOR TO REPAIR TILE WORK TO MATCH EXISTING.
- ⑦ REMOVE EXISTING PUMPS P7 & P8. SEE GENERAL NOTE 1. CONTRACTOR TO REPAIR TILE WORK TO MATCH EXISTING.
- ⑧ REMOVE EXISTING CHEMICAL TREATMENT SYSTEM.
- ⑨ REMOVE EXISTING EXPANSION TANK.
- ⑩ REMOVE EXISTING PIPING AND INSULATION TO TIE POINT SHOWN ON PART PLAN ABOVE ELEVATION 228.295.
- ⑪ REMOVE EXISTING COOLING COIL 3-WAY PNEUMATIC CONTROL VALVE.
- ⑫ EXISTING GLYCOL MAKE-UP PACKAGE TO REMAIN.

**DEMOLITION NOTES CONT'D**

- ⑬ DEMOLISH EXISTING COOLING TOWER PAD TO 600mm BELOW EXISTING GRADE. RESTORE SITE AFTER DEMOLITION IN ACCORDANCE WITH CITY SPECIFICATIONS.
- ⑭ REMOVE EXISTING AIR HANDLING UNIT TEMPERATURE TRANSMITTER IN THE PUMP ROOM.
- ⑮ EXISTING ELECTRICAL ROOM EXHAUST FAN AND TEMPERATURE SWITCH TO REMAIN.
- ⑯ EXISTING ELECTRICAL ROOM CONVECTORS AND THERMOSTAT TO REMAIN.
- ⑰ REMOVE ALL FAN COIL PIPING INSULATION, WHERE ACCESSIBLE.
- ⑱ EXISTING FAN COIL TO REMAIN.
- ⑲ RELOCATE RAIN WATER LEADER TO CONTROL ROOM. REFER TO DRAWING 1-0640M-M0007. REMOVE ALL UNUSED PIPING IN ELECTRICAL ROOM AND PUMP ROOM BELOW TO NEW TIE IN AT APPROXIMATELY GRID LINE 5. PATCH FLOOR OPENING.
- ⑳ REMOVE EXISTING PNEUMATIC DAMPER ACTUATORS AND ASSOCIATED COMPRESSED AIR LINES. DAMPERS LOCATED AT UNDERSIDE OF CEILING AT 240.0m, FLOOR BELOW AT 228.3m. REFER TO 1-0640M-M0009 FOR EQUIPMENT SCHEDULE.
- ㉑ CUT ABANDONED PIPING PROUD OF THE INTERIOR AND EXTERIOR WALL SURFACES. WELD ON APPROPRIATE 300# FLANGES ON EITHER SIDE OF THE WALL. INFILL PIPES WITH MINERAL WOOL INSULATION AND CAP BOTH ENDS WITH BLIND FLANGES. PAINT TO MATCH EXISTING WALL SURFACE.
- ㉒ REMOVE EXISTING STATION TEMPERATURE SENSORS TSL/TSH.
- ㉓ REMOVE EXISTING FAN COIL CONDENSATE PIPING.

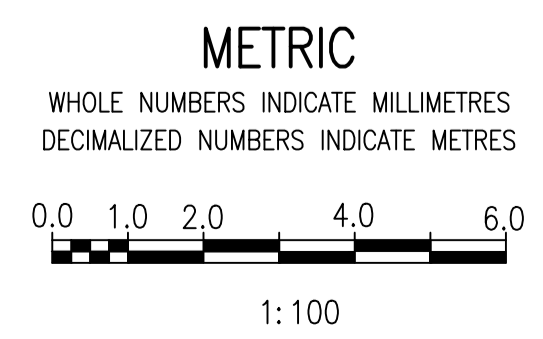
**GENERAL NOTES**

- 1. EXISTING COOLING TOWER, CHILLER AND PUMPS PARTS WILL BE SALVAGED BY THE CITY. GENERAL DEMOLITION TO BE COMPLETED BY CONTRACTOR.
- 2. DRAWING INFORMATION BASED ON HISTORICAL DRAWING McP-230 AND SITE INVESTIGATIONS.
- 3. INSULATION ON DOMESTIC WATER, CHILLED WATER SUPPLY/RETURN, FRESH AIR INTAKE, RAIN WATER LEADER, CONDENSATE AND DRAIN PIPE FITTINGS CONTAIN ASBESTOS MATERIALS AND MUST BE REMOVED IN ACCORDANCE WITH THE ASBESTOS ABATEMENT SPECIFICATIONS.
- 4. MASONRY BLOCK WALLS, CEILING OR WALL HARD PLASTERS AND CERAMIC FLOOR TILES MAY CONTAIN ASBESTOS. CORING OR DRILLING OF WALLS MUST BE DONE IN ACCORDANCE WITH THE ASBESTOS ABATEMENT SPECIFICATIONS.
- 5. PHASE THE CONSTRUCTION AND DEMOLITION OF THE HEATING AND COOLING SYSTEMS IN ACCORDANCE WITH THE SEASONS WHERE POSSIBLE.

**LEGEND**

|  |                                |
|--|--------------------------------|
|  | EXISTING EQUIPMENT TO REMAIN   |
|  | EQUIPMENT TO BE REMOVED        |
|  | EXISTING COOLING GLYCOL SUPPLY |
|  | EXISTING COOLING GLYCOL RETURN |
|  | EXISTING CONDENSATE DRAIN      |
|  | THERMOSTAT                     |
|  | TEMPERATURE TRANSMITTER        |
|  | TEMPERATURE SWITCH             |
|  | PNEUMATIC ACTUATOR             |

|                |  |
|----------------|--|
| 1-0640M-M0009  | PROCESS FLOW DIAGRAM AND EQUIPMENT SCHEDULES |
| 1-0640M-M0007  | ELEVATION 233.020 PART PLAN                  |
| DRAWING NUMBER | REFERENCE DRAWINGS                           |



| NO. | REVISIONS                          | DATE       | DESIGN | CHECK |
|-----|------------------------------------|------------|--------|-------|
| 00  | ISSUED FOR TENDER AND CONSTRUCTION | 2019/11/01 |        |       |

**SNC-LAVALIN INC.**  
148 Nature Park Way  
Winnipeg, MB, Canada R3P 0X7  
204-786-8080

|                          |                               |
|--------------------------|-------------------------------|
| DESIGNED BY:<br>H. OJO   | CHECKED BY:<br>S. NORSWORTHY  |
| DRAWN BY:<br>K. MOHAMMED | APPROVED BY:<br>S. NORSWORTHY |
| SCALE: 1:100             | ISSUED FOR CONSTRUCTION       |
| DATE: 2019/04/26         | BY:                           |
| CONSULTANT NO.:          | DATE:                         |

ENGINEER'S SEAL

**THE CITY OF WINNIPEG**  
WATER AND WASTE DEPARTMENT

MCPHILLIPS PUMPING STATION  
MAIN PUMPING STATION BUILDING  
MECHANICAL  
BUILDING CHILLER  
DEMOLITION PLANS

|                     |       |      |      |
|---------------------|-------|------|------|
| CITY DRAWING NUMBER | SHEET | REV. | SIZE |
| 1-0640M-M0005       | 001   | 00   | A1   |