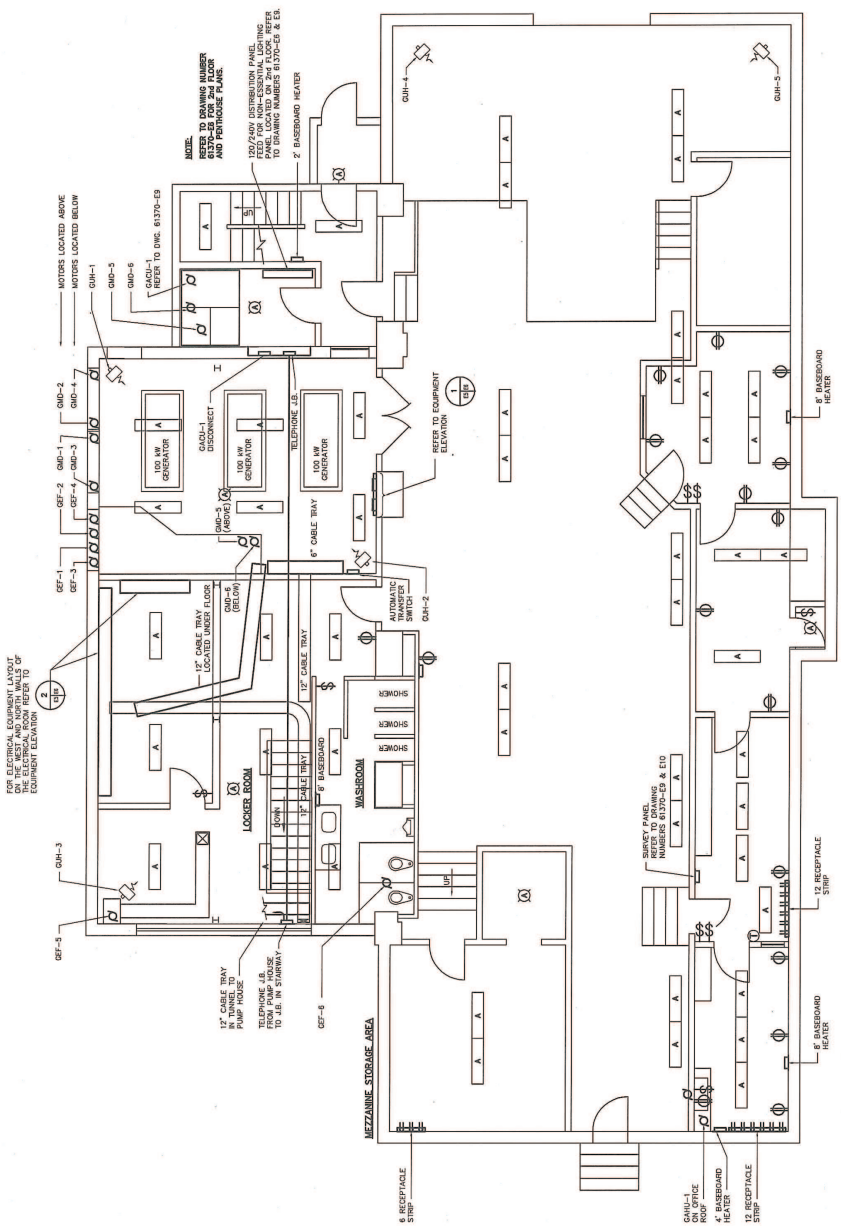


APPENDIX I – Issued for Information Only Drawings



FOR INFORMATION ONLY

NOTE 1:
 THIS SET OF PHILLIPS STREET PUMPING STATION RECORD DRAWINGS HAS BEEN PREVIOUSLY LINKED TO A "PARADOX" DATABASE FILE (PARADOX AND AUTOCAD). THE USER MUST USE THE SOFTWARE PACKAGE "AMBIDEX" IF THE USER DOES NOT HAVE "AMBIDEX" AND/OR THE "SOFT COPIES" ARE NOT AVAILABLE. THE USER MUST FOLLOW THE "SOFT COPY" FILES ARE BROUGHT UP TO THE SAME REVISION LEVEL.

⊙ GARAGE BUILDING - GENSSET ROOM
 SCALE 1:50

THE CITY OF WINNIPEG
 WATER AND WASTE DEPARTMENT

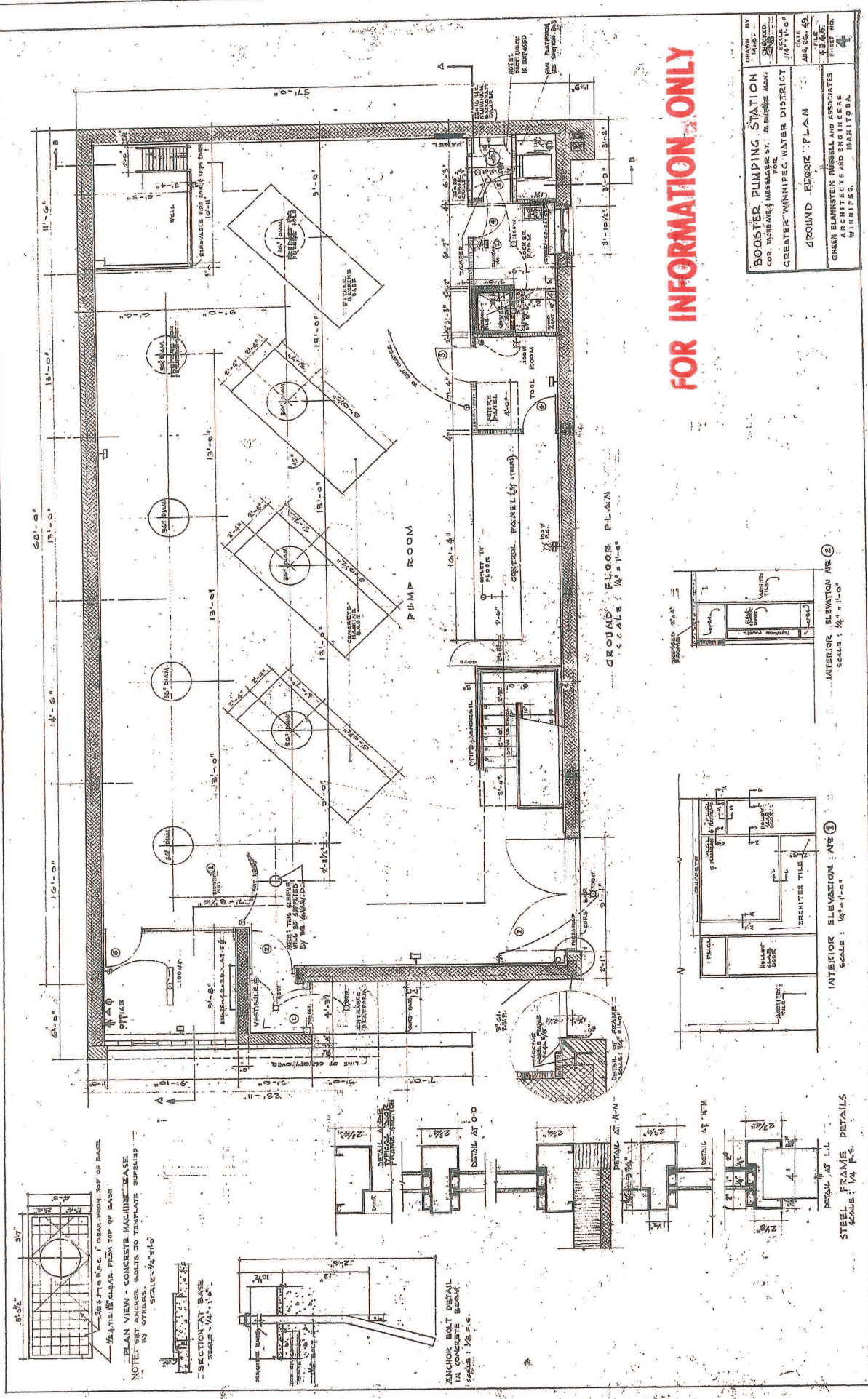
PHILLIPS PUMPING STATION
 RECORD DRAWINGS
 GARAGE BLDG. - GENSSET RM,
 LIGHTING, POWER, H.V.A.C. & CABLE TRAY

CITY DRAWING NUMBER
 SHEET 5 OF 17

CONSULTANT DRAWING NO.
 61370 - 05

DATE
 05-02-03

NO.	DESCRIPTION	DATE
1	ISSUED FOR PERMIT	05-02-03
2	ISSUED FOR REVIEW	05-02-03
3	ISSUED FOR REVIEW	05-02-03
4	ISSUED FOR REVIEW	05-02-03
5	ISSUED FOR REVIEW	05-02-03
6	ISSUED FOR REVIEW	05-02-03
7	ISSUED FOR REVIEW	05-02-03
8	ISSUED FOR REVIEW	05-02-03
9	ISSUED FOR REVIEW	05-02-03
10	ISSUED FOR REVIEW	05-02-03



FOR INFORMATION ONLY

DRAWN BY H.S. ... CHECKED BY ... SCALE 1/4" = 1'-0"	BOOSTER PUMPING STATION FOR COR. TACON AVE. & MESSIAH ST. - WINNIPEG, MAN. - GREATER WINNIPEG WATER DISTRICT	PROJECT NO. 48 SHEET NO. 4
GROUND FLOOR PLAN		GREEN BLANKENHORN, JENSEN & ASSOCIATES ARCHITECTS AND ENGINEERS WINNIPEG, MANITOBA

35"
 3/4" x 1/2" CLEARANCE FROM TOP OF BASE
 PLAN VIEW - CONCRETE MACHINE BASE
 NOTE: SET ANCHOR BOLTS TO MIN. PLATE SUBSID. BY OTHERS.
 SCALE: 1/4" = 1'-0"

SECTION AT BASE
 SCALE: 1/4" = 1'-0"

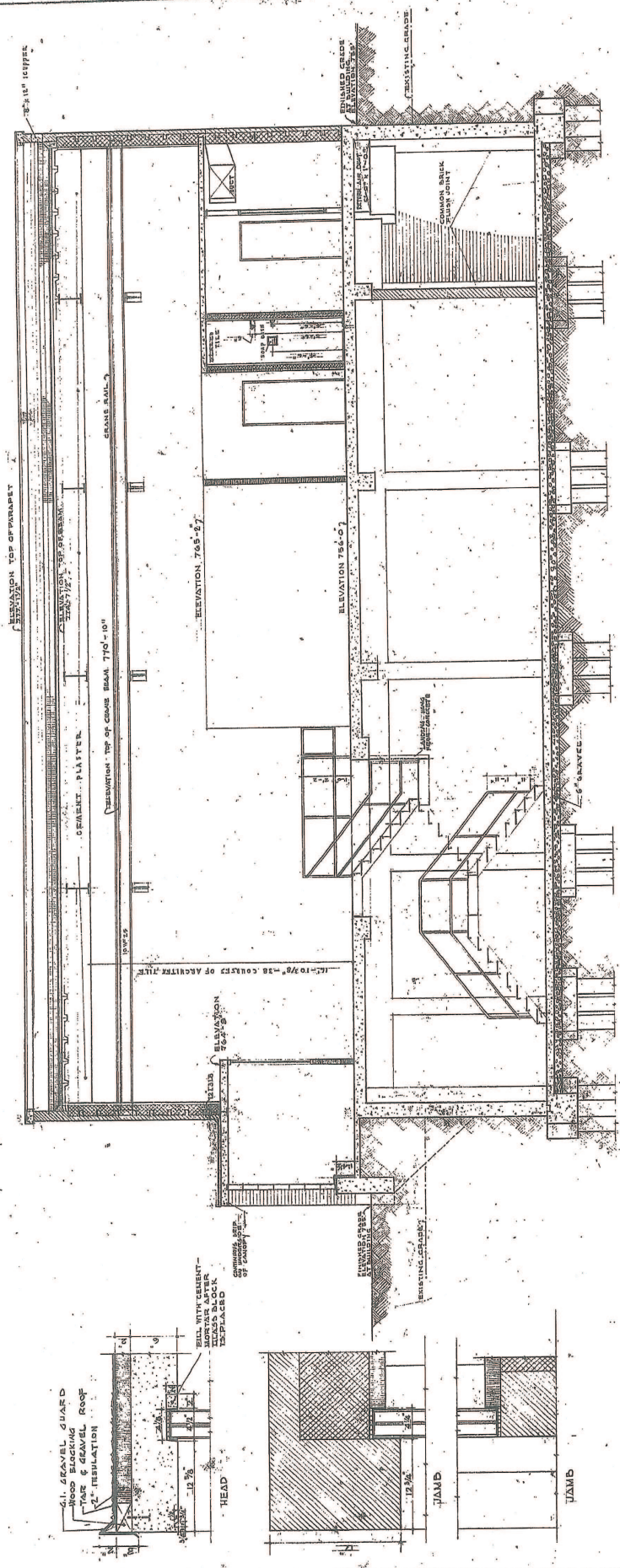
ANCHOR BOLT DETAIL
 IN CONCRETE BLOCK
 SCALE: 1/8" = 1'-0"

DETAIL AT L-L
 STEEL FRAME DETAILS
 SCALE: 1/4" = 1'-0"

INTERIOR ELEVATION - NE 1
 SCALE: 1/4" = 1'-0"

INTERIOR ELEVATION AS 2
 SCALE: 1/4" = 1'-0"

GROUND FLOOR PLAN
SCALE: 1/4" = 1'-0"

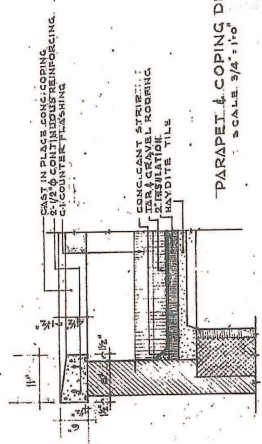


FOR INFORMATION ONLY

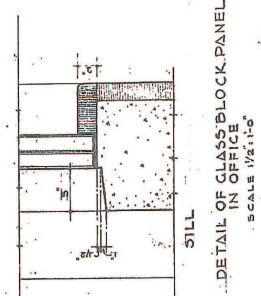
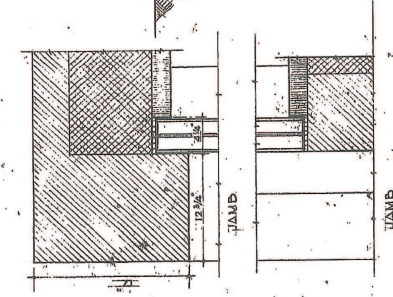
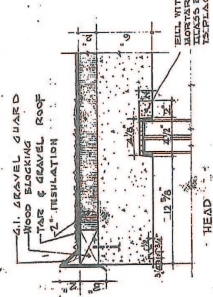
SECTION A-A
SCALE 1/4"=1'-0"

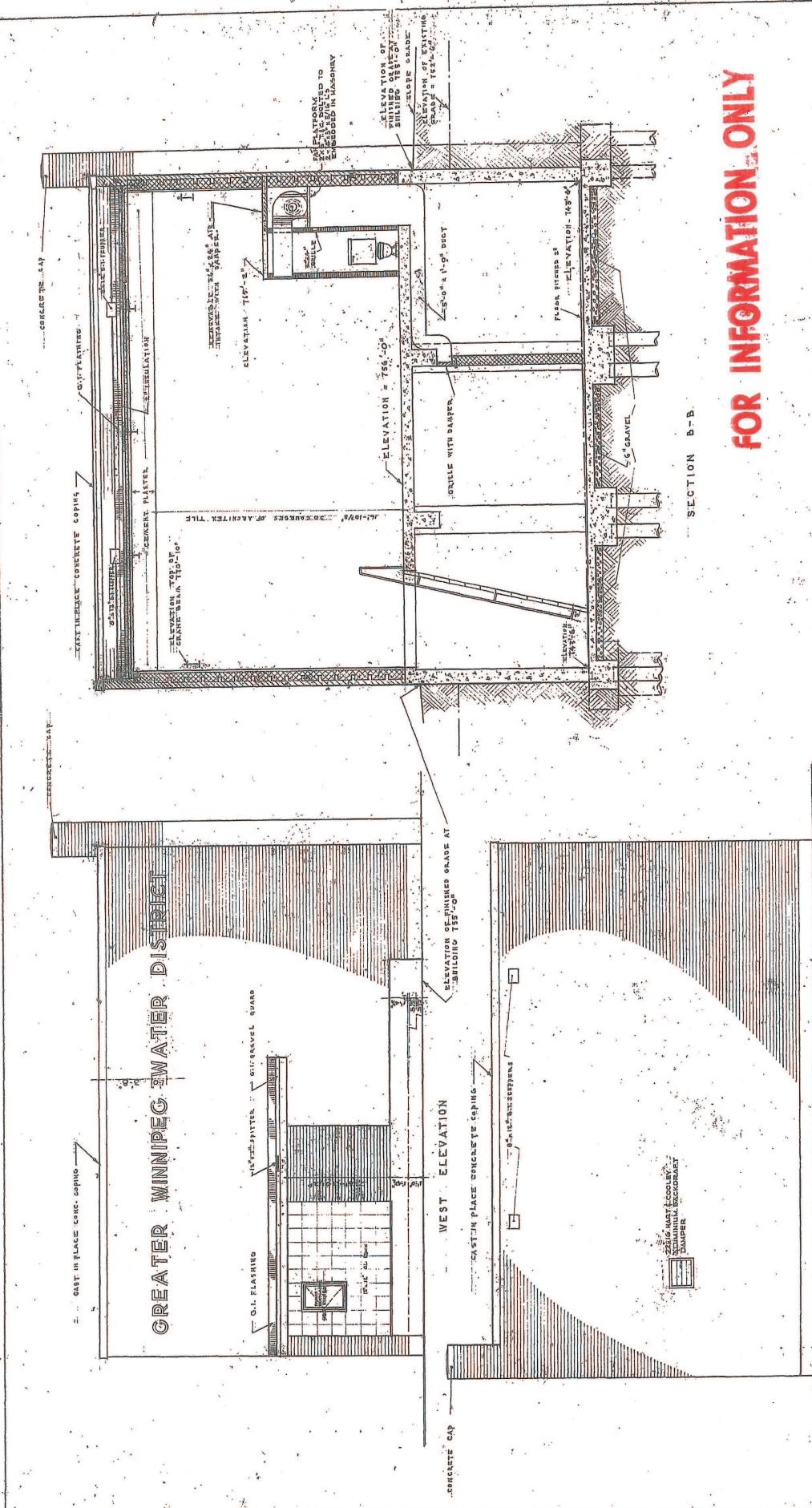
DRAWN BY J.A.D.	BOOSTER PUMPING STATION
CHECKED BY C.A.S.	COR. TACHEMAY MESSAGER ST. ST. POMPEES AMM.
SCALE AS NOTED	GREATER WINNIPEG WATER DISTRICT
DATE AUG. 26, 49	LONGITUDINAL SECTION
DRAWN BY J.A.D.	GREEN BLANKSTEIN RUSSELL AND ASSOCIATES
CHECKED BY C.A.S.	ARCHITECTS AND ENGINEERS
DATE AUG. 26, 49	WINNIPEG, MANITOBA

D-629



PARAPET & COPING DETAIL
SCALE 9/16" = 1'-0"





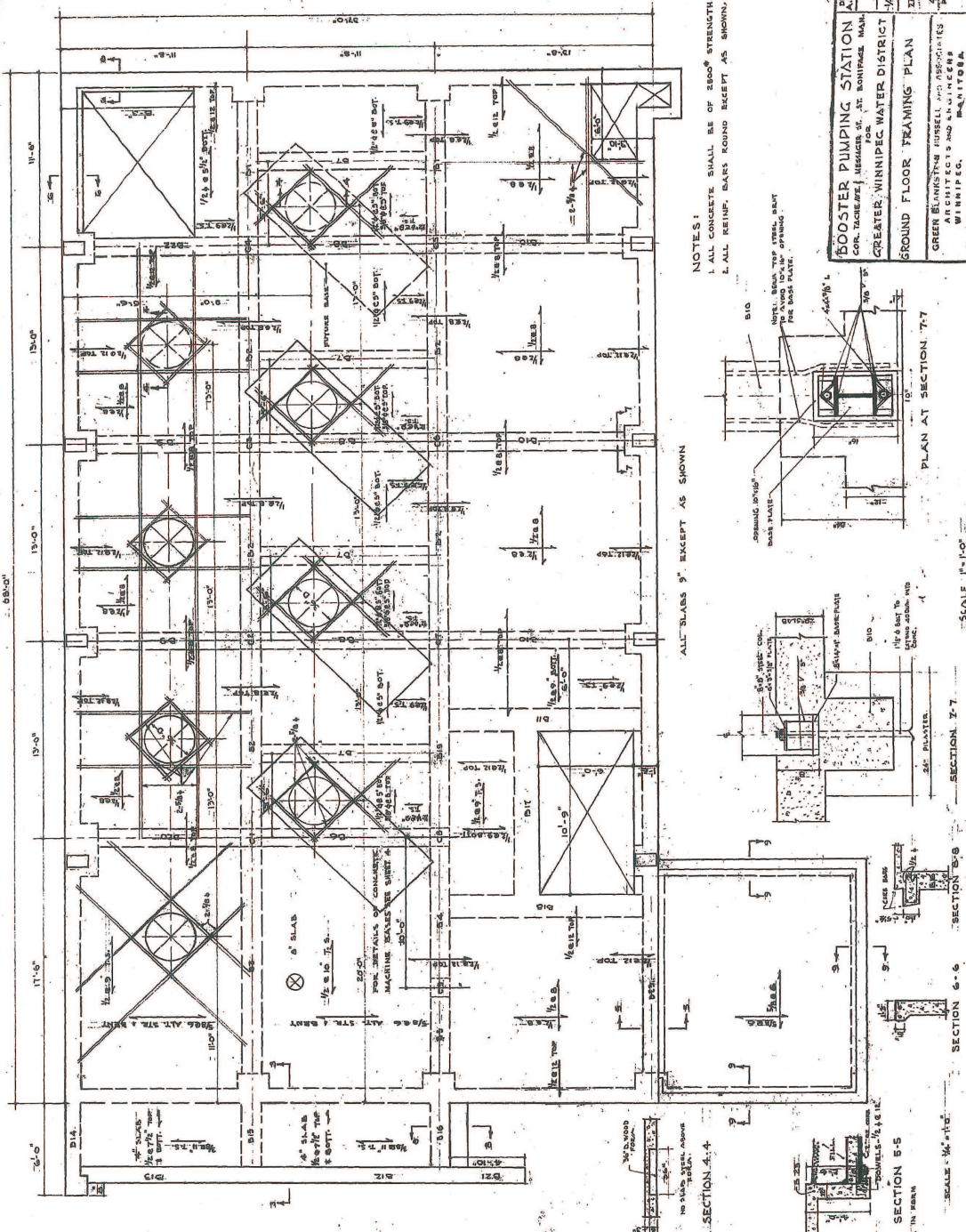
FOR INFORMATION ONLY

DRAWN BY E.L. SAMP	DATE 2/28/66
PROJECT BOULDER DUMPING STATION	SCALE 1/4" = 1'-0"
FOR GREATER MINNEAPOLIS WATER DISTRICT	DATE 26 JULY 1966
CROSS-SECTION & END ELEVATIONS	FILE NO. 4946
GREEN BLASTON FURNACE ASSOCIATES ENGINEERS AND ARCHITECTS WINNIPEG, MANITOBA	SHEET NO. 7

D-629-7

FOR INFORMATION ONLY

NOTES: 1. PROVIDE 1/2" BOLT UNDER EACH ANCHOR BOLT. 2. PROVIDE ANCHOR BOLTS IN THE SAME POSITION AS IN PRESENT MACHINE FOUNDATION. 3. PROVIDE ANCHOR BOLTS IN THE SAME POSITION AS IN PRESENT MACHINE FOUNDATION. 4. PROVIDE ANCHOR BOLTS IN THE SAME POSITION AS IN PRESENT MACHINE FOUNDATION.

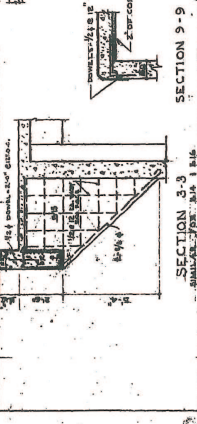


NOTES:
 1. ALL CONCRETE SHALL BE OF 2800' STRENGTH.
 2. ALL REINFORCING BARS SHALL BE ROUND UNLESS OTHERWISE SHOWN.

BOOSTER PUMPING STATION	
DESIGNED BY	GREEN BARNETT HUSSELL AND ASSOCIATES
CHECKED BY	ARCHITECTS AND ENGINEERS
DATE	WINNIEPICO, MINN.
PROJECT NO.	629-9
SCALE	AS SHOWN

D-629-9

MARK	SIZE	REINFORCING	REMARKS
B1	14	4 #7	TOP FROM PLASTER TO 1/2" PT. BR.
B2	10	3 #7	TOP FROM PLASTER TO 1/2" PT. BR.
B3	14	4 #7	TOP FROM PLASTER TO 1/2" PT. BR.
B4	14	4 #7	TOP FROM PLASTER TO 1/2" PT. BR.
B5	14	4 #7	TOP FROM PLASTER TO 1/2" PT. BR.
B6	14	4 #7	TOP FROM PLASTER TO 1/2" PT. BR.
B7	14	4 #7	TOP FROM PLASTER TO 1/2" PT. BR.
B8	14	4 #7	TOP FROM PLASTER TO 1/2" PT. BR.
B9	14	4 #7	TOP FROM PLASTER TO 1/2" PT. BR.
B10	14	4 #7	TOP FROM PLASTER TO 1/2" PT. BR.
B11	14	4 #7	TOP FROM PLASTER TO 1/2" PT. BR.
B12	14	4 #7	TOP FROM PLASTER TO 1/2" PT. BR.
B13	14	4 #7	TOP FROM PLASTER TO 1/2" PT. BR.
B14	14	4 #7	TOP FROM PLASTER TO 1/2" PT. BR.
B15	14	4 #7	TOP FROM PLASTER TO 1/2" PT. BR.
B16	14	4 #7	TOP FROM PLASTER TO 1/2" PT. BR.
B17	14	4 #7	TOP FROM PLASTER TO 1/2" PT. BR.
B18	14	4 #7	TOP FROM PLASTER TO 1/2" PT. BR.
B19	14	4 #7	TOP FROM PLASTER TO 1/2" PT. BR.
B20	14	4 #7	TOP FROM PLASTER TO 1/2" PT. BR.
B21	14	4 #7	TOP FROM PLASTER TO 1/2" PT. BR.
B22	14	4 #7	TOP FROM PLASTER TO 1/2" PT. BR.
B23	14	4 #7	TOP FROM PLASTER TO 1/2" PT. BR.
B24	14	4 #7	TOP FROM PLASTER TO 1/2" PT. BR.
B25	14	4 #7	TOP FROM PLASTER TO 1/2" PT. BR.
B26	14	4 #7	TOP FROM PLASTER TO 1/2" PT. BR.
B27	14	4 #7	TOP FROM PLASTER TO 1/2" PT. BR.
B28	14	4 #7	TOP FROM PLASTER TO 1/2" PT. BR.
B29	14	4 #7	TOP FROM PLASTER TO 1/2" PT. BR.
B30	14	4 #7	TOP FROM PLASTER TO 1/2" PT. BR.
B31	14	4 #7	TOP FROM PLASTER TO 1/2" PT. BR.
B32	14	4 #7	TOP FROM PLASTER TO 1/2" PT. BR.
B33	14	4 #7	TOP FROM PLASTER TO 1/2" PT. BR.
B34	14	4 #7	TOP FROM PLASTER TO 1/2" PT. BR.
B35	14	4 #7	TOP FROM PLASTER TO 1/2" PT. BR.
B36	14	4 #7	TOP FROM PLASTER TO 1/2" PT. BR.
B37	14	4 #7	TOP FROM PLASTER TO 1/2" PT. BR.
B38	14	4 #7	TOP FROM PLASTER TO 1/2" PT. BR.
B39	14	4 #7	TOP FROM PLASTER TO 1/2" PT. BR.
B40	14	4 #7	TOP FROM PLASTER TO 1/2" PT. BR.
B41	14	4 #7	TOP FROM PLASTER TO 1/2" PT. BR.
B42	14	4 #7	TOP FROM PLASTER TO 1/2" PT. BR.
B43	14	4 #7	TOP FROM PLASTER TO 1/2" PT. BR.
B44	14	4 #7	TOP FROM PLASTER TO 1/2" PT. BR.
B45	14	4 #7	TOP FROM PLASTER TO 1/2" PT. BR.
B46	14	4 #7	TOP FROM PLASTER TO 1/2" PT. BR.
B47	14	4 #7	TOP FROM PLASTER TO 1/2" PT. BR.
B48	14	4 #7	TOP FROM PLASTER TO 1/2" PT. BR.
B49	14	4 #7	TOP FROM PLASTER TO 1/2" PT. BR.
B50	14	4 #7	TOP FROM PLASTER TO 1/2" PT. BR.
B51	14	4 #7	TOP FROM PLASTER TO 1/2" PT. BR.
B52	14	4 #7	TOP FROM PLASTER TO 1/2" PT. BR.
B53	14	4 #7	TOP FROM PLASTER TO 1/2" PT. BR.
B54	14	4 #7	TOP FROM PLASTER TO 1/2" PT. BR.
B55	14	4 #7	TOP FROM PLASTER TO 1/2" PT. BR.
B56	14	4 #7	TOP FROM PLASTER TO 1/2" PT. BR.
B57	14	4 #7	TOP FROM PLASTER TO 1/2" PT. BR.
B58	14	4 #7	TOP FROM PLASTER TO 1/2" PT. BR.
B59	14	4 #7	TOP FROM PLASTER TO 1/2" PT. BR.
B60	14	4 #7	TOP FROM PLASTER TO 1/2" PT. BR.
B61	14	4 #7	TOP FROM PLASTER TO 1/2" PT. BR.
B62	14	4 #7	TOP FROM PLASTER TO 1/2" PT. BR.
B63	14	4 #7	TOP FROM PLASTER TO 1/2" PT. BR.
B64	14	4 #7	TOP FROM PLASTER TO 1/2" PT. BR.
B65	14	4 #7	TOP FROM PLASTER TO 1/2" PT. BR.
B66	14	4 #7	TOP FROM PLASTER TO 1/2" PT. BR.
B67	14	4 #7	TOP FROM PLASTER TO 1/2" PT. BR.
B68	14	4 #7	TOP FROM PLASTER TO 1/2" PT. BR.
B69	14	4 #7	TOP FROM PLASTER TO 1/2" PT. BR.
B70	14	4 #7	TOP FROM PLASTER TO 1/2" PT. BR.
B71	14	4 #7	TOP FROM PLASTER TO 1/2" PT. BR.
B72	14	4 #7	TOP FROM PLASTER TO 1/2" PT. BR.
B73	14	4 #7	TOP FROM PLASTER TO 1/2" PT. BR.
B74	14	4 #7	TOP FROM PLASTER TO 1/2" PT. BR.
B75	14	4 #7	TOP FROM PLASTER TO 1/2" PT. BR.
B76	14	4 #7	TOP FROM PLASTER TO 1/2" PT. BR.
B77	14	4 #7	TOP FROM PLASTER TO 1/2" PT. BR.
B78	14	4 #7	TOP FROM PLASTER TO 1/2" PT. BR.
B79	14	4 #7	TOP FROM PLASTER TO 1/2" PT. BR.
B80	14	4 #7	TOP FROM PLASTER TO 1/2" PT. BR.
B81	14	4 #7	TOP FROM PLASTER TO 1/2" PT. BR.
B82	14	4 #7	TOP FROM PLASTER TO 1/2" PT. BR.
B83	14	4 #7	TOP FROM PLASTER TO 1/2" PT. BR.
B84	14	4 #7	TOP FROM PLASTER TO 1/2" PT. BR.
B85	14	4 #7	TOP FROM PLASTER TO 1/2" PT. BR.
B86	14	4 #7	TOP FROM PLASTER TO 1/2" PT. BR.
B87	14	4 #7	TOP FROM PLASTER TO 1/2" PT. BR.
B88	14	4 #7	TOP FROM PLASTER TO 1/2" PT. BR.
B89	14	4 #7	TOP FROM PLASTER TO 1/2" PT. BR.
B90	14	4 #7	TOP FROM PLASTER TO 1/2" PT. BR.
B91	14	4 #7	TOP FROM PLASTER TO 1/2" PT. BR.
B92	14	4 #7	TOP FROM PLASTER TO 1/2" PT. BR.
B93	14	4 #7	TOP FROM PLASTER TO 1/2" PT. BR.
B94	14	4 #7	TOP FROM PLASTER TO 1/2" PT. BR.
B95	14	4 #7	TOP FROM PLASTER TO 1/2" PT. BR.
B96	14	4 #7	TOP FROM PLASTER TO 1/2" PT. BR.
B97	14	4 #7	TOP FROM PLASTER TO 1/2" PT. BR.
B98	14	4 #7	TOP FROM PLASTER TO 1/2" PT. BR.
B99	14	4 #7	TOP FROM PLASTER TO 1/2" PT. BR.
B100	14	4 #7	TOP FROM PLASTER TO 1/2" PT. BR.



SECTION 3-3
 SCALE: 1/4" = 1'-0"

SECTION 4-4
 SCALE: 1/4" = 1'-0"

SECTION 5-5
 SCALE: 1/4" = 1'-0"

SECTION 6-6
 SCALE: 1/4" = 1'-0"

SECTION 7-7
 SCALE: 1/4" = 1'-0"

SECTION 8-8
 SCALE: 1/4" = 1'-0"

SECTION 9-9
 SCALE: 1/4" = 1'-0"