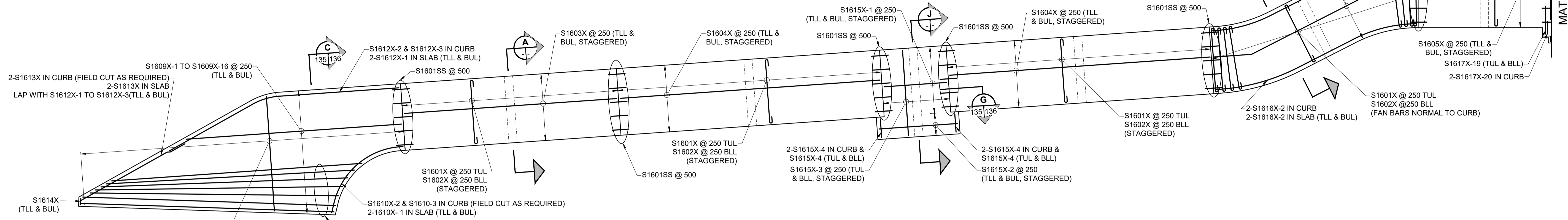
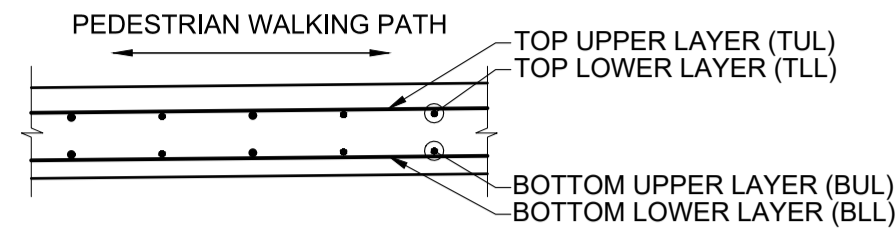
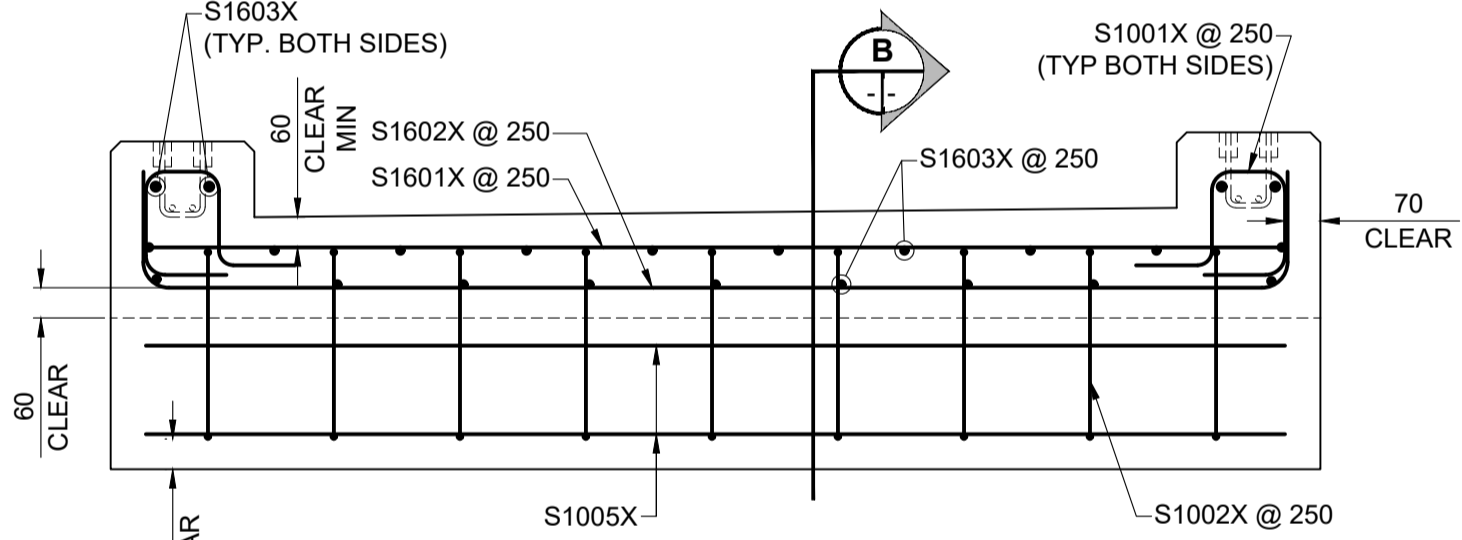


SLAB-ON-GRADE REINFORCEMENT LAYERS

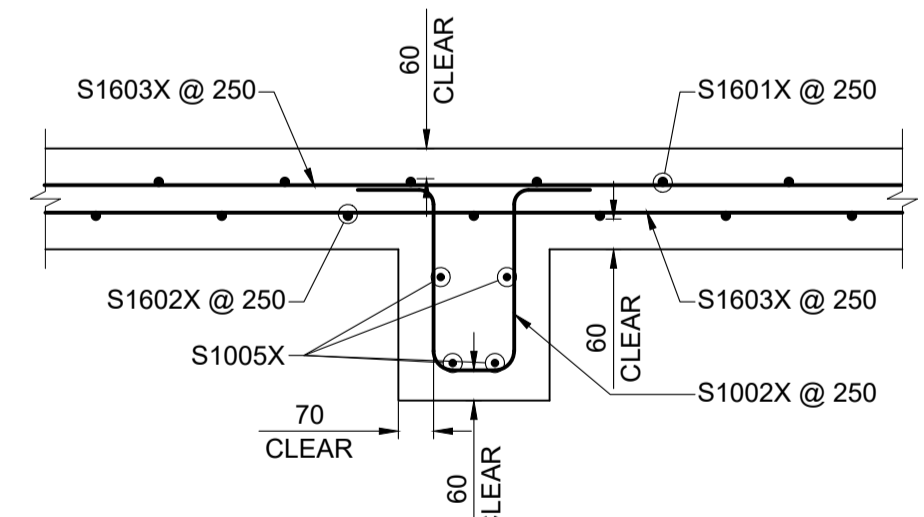


SLAB REINFORCING PLAN
EMPRESS STREET SIDE
SCALE: 1:75

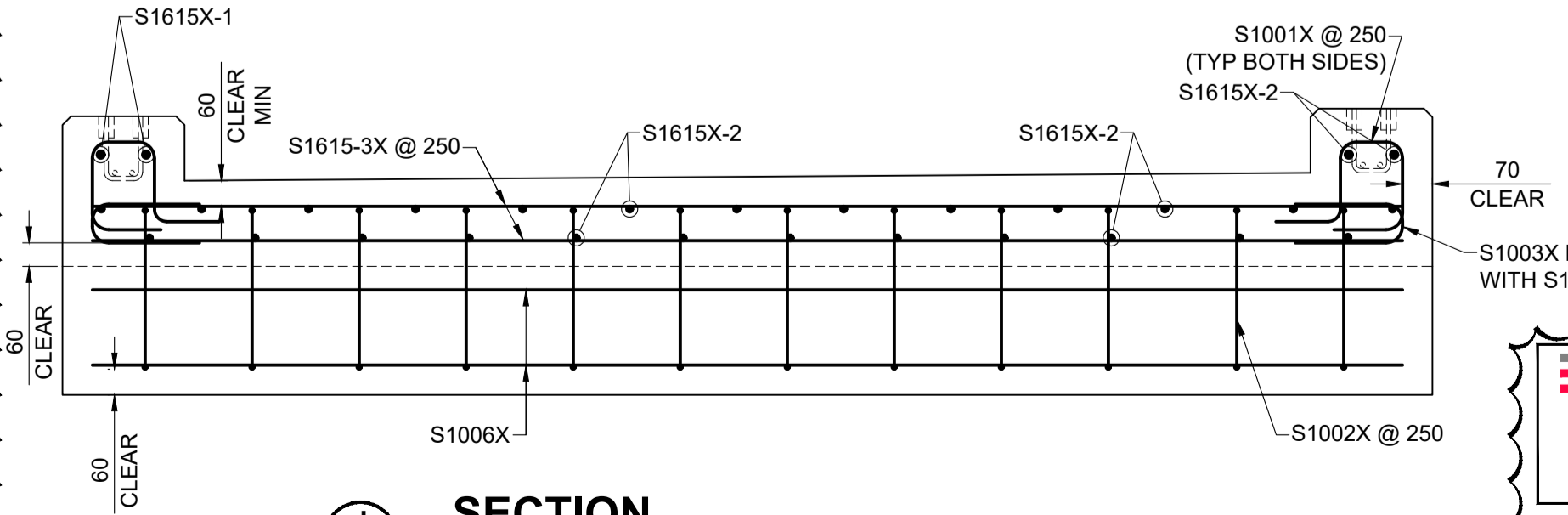
- NOTES:**
- CURB AND CURB REINFORCEMENT NOT SHOWN IN PLAN FOR CLARITY. SEE CROSS SECTIONS.
 - BOTTOM MAT REINFORCEMENT NOT SHOWN IN PLAN FOR CLARITY. SEE CROSS SECTIONS.
 - SHEAR KEY REINFORCEMENT NOT SHOWN IN PLAN VIEW FOR CLARITY. SEE CROSS SECTIONS.
 - SLAB ON GRADE SAW CUTS SHALL BE SPACED AT 2m MAX BETWEEN TRANSVERSE MOVING JOINTS UNLESS NOTED OTHERWISE. SEE DETAIL 1 ON SHEET 136.
 - ALL EXPOSED CONCRETE SHALL HAVE A 20mm CHAMFER UNLESS NOTED.



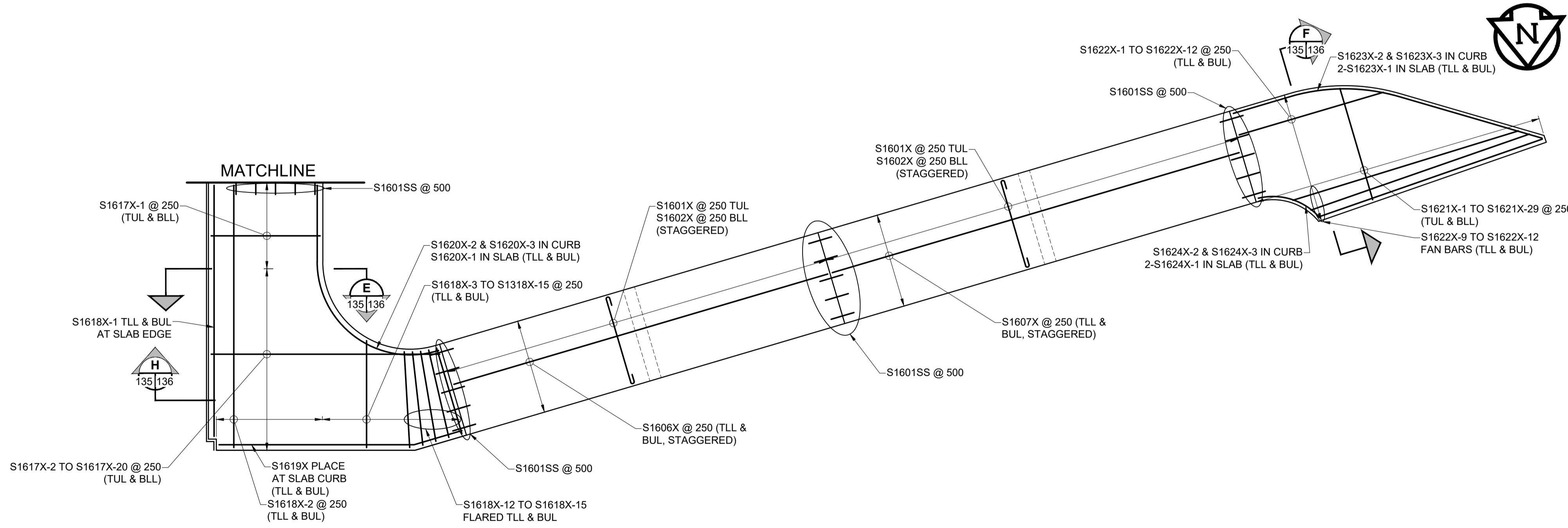
SECTION A
TYPICAL SLAB REINFORCEMENT WITH SHEAR KEY
SCALE: 1:15



SECTION B
TYPICAL SLAB REINFORCEMENT WITH SHEAR KEY
SCALE: 1:15



SECTION J
SLAB REINFORCEMENT WITH SHEAR KEY AT LANDING
SCALE: 1:15



SLAB REINFORCING PLAN
PORTAGE AVENUE SIDE
SCALE: 1:75

ENGINEERS & GEOSCIENTISTS
Certificate of Authorization
MORRISON HERSHFIELD
No. 1736

METRIC
WHOLE NUMBERS INDICATE MILLIMETRES
DECIMALIZED NUMBERS INDICATE METRES

LOCATION APPROVED
UNDERGROUND STRUCTURES
DATE: _____
NOTE: LOCATION OF UNDERGROUND STRUCTURES AS SHOWN ARE BASED ON THE BEST INFORMATION AVAILABLE BUT NO GUARANTEE IS GIVEN THAT ALL EXISTING UTILITIES ARE SHOWN OR THAT THE GIVEN LOCATIONS ARE EXACT. CONFIRMATION OF EXISTENCE AND EXACT LOCATION OF ALL SERVICES MUST BE OBTAINED FROM THE INDIVIDUAL UTILITIES BEFORE PROCEEDING WITH CONSTRUCTION.

No.	REVISIONS	DATE	BY
C	ISSUED FOR ADDENDUM 1	18/10/05	BAP
B	ISSUED FOR TENDER	18/09/04	BAP
A	ISSUED FOR 95% DESIGN REVIEW	18/08/07	BAP

DESIGNED BY	YM	CHECKED BY	BAP
DRAWN BY	ALP	APPROVED BY	BE
HOR SCALE	AS SHOWN	RELEASED FOR CONSTRUCTION	
VERT SCALE	AS SHOWN		N/A

PROFESSIONAL'S SEAL
B.A.F. PHILLIPS
Member 32723
REGISTERED PROFESSIONAL ENGINEER

THE CITY OF WINNIPEG
PUBLIC WORKS DEPARTMENT
ENGINEERING DIVISION

EMPRESS STREET PROJECT
PEDESTRIAN ACCESSIBILITY RAMPS
SOUTH RAMP
SLAB ON GRADE REINFORCEMENT PLAN

CITY DRAWING NUMBER: P-3494-135
SHEET 135 OF 169
DRAWING No. 135 REV C