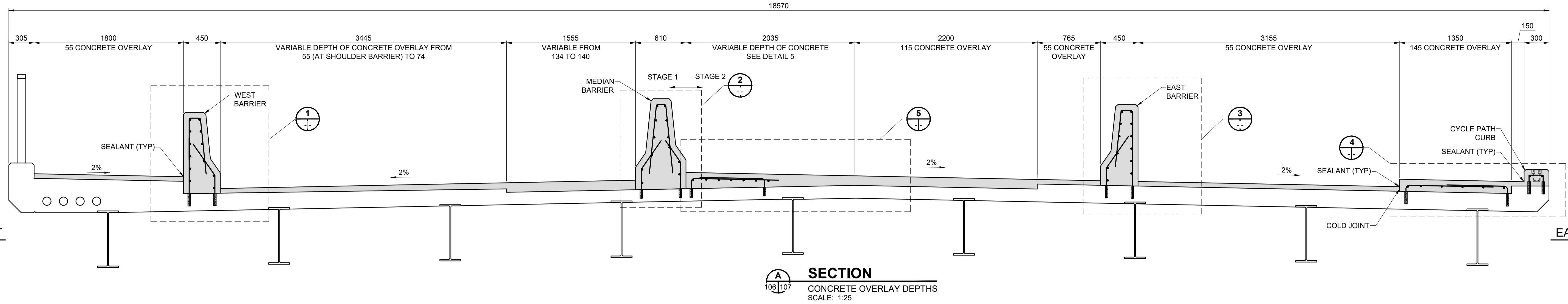


RSD A1 - 594mm x 841mm

WEST

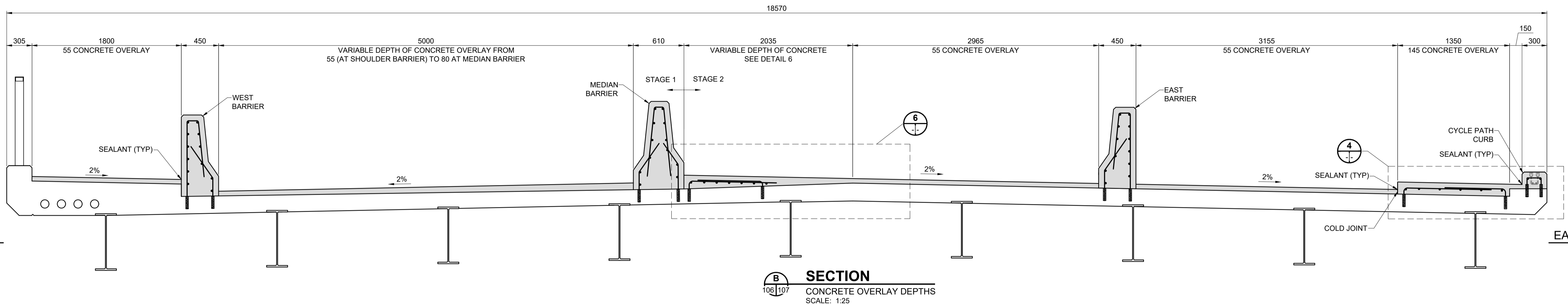
EAST



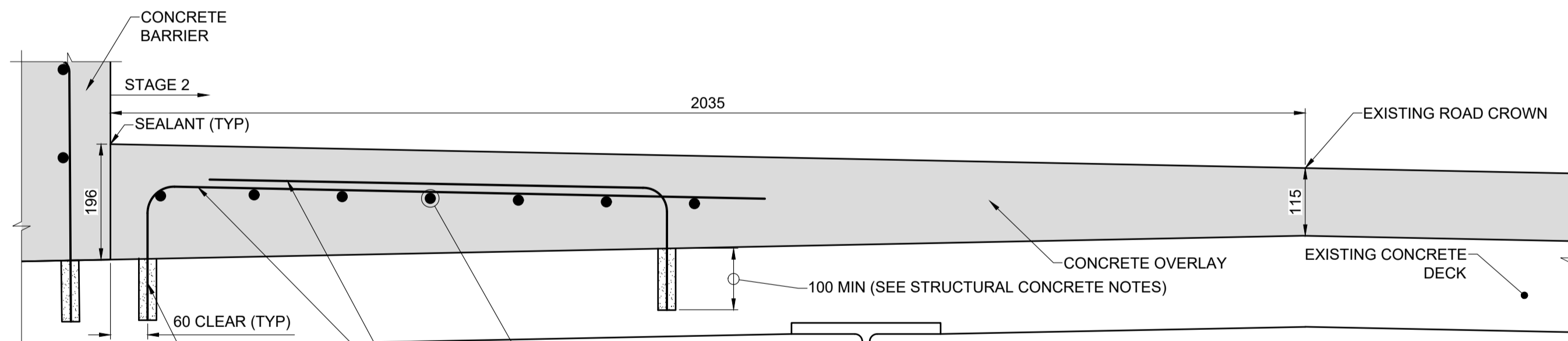
**SECTION A**  
106/107  
CONCRETE OVERLAY DEPTHS  
SCALE: 1:25

WEST

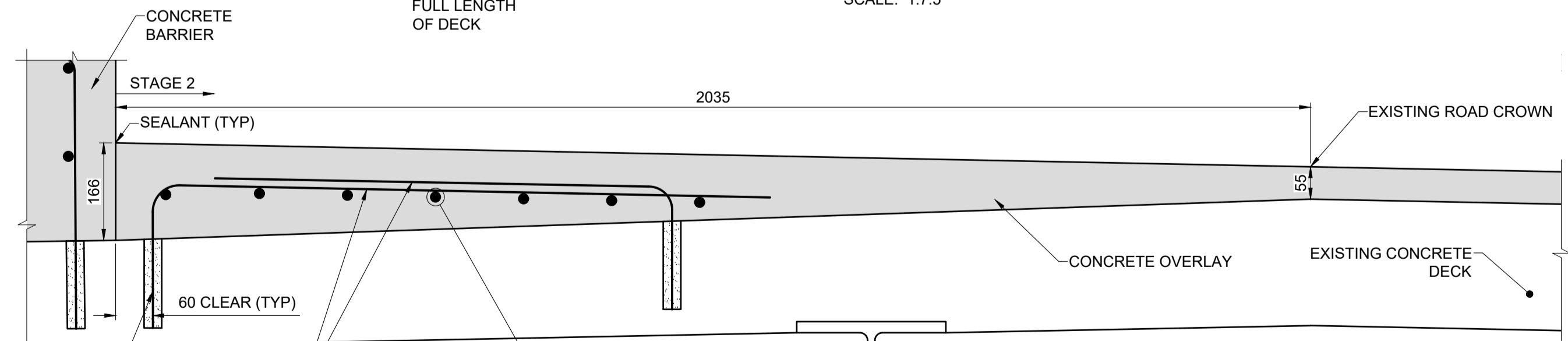
EAST



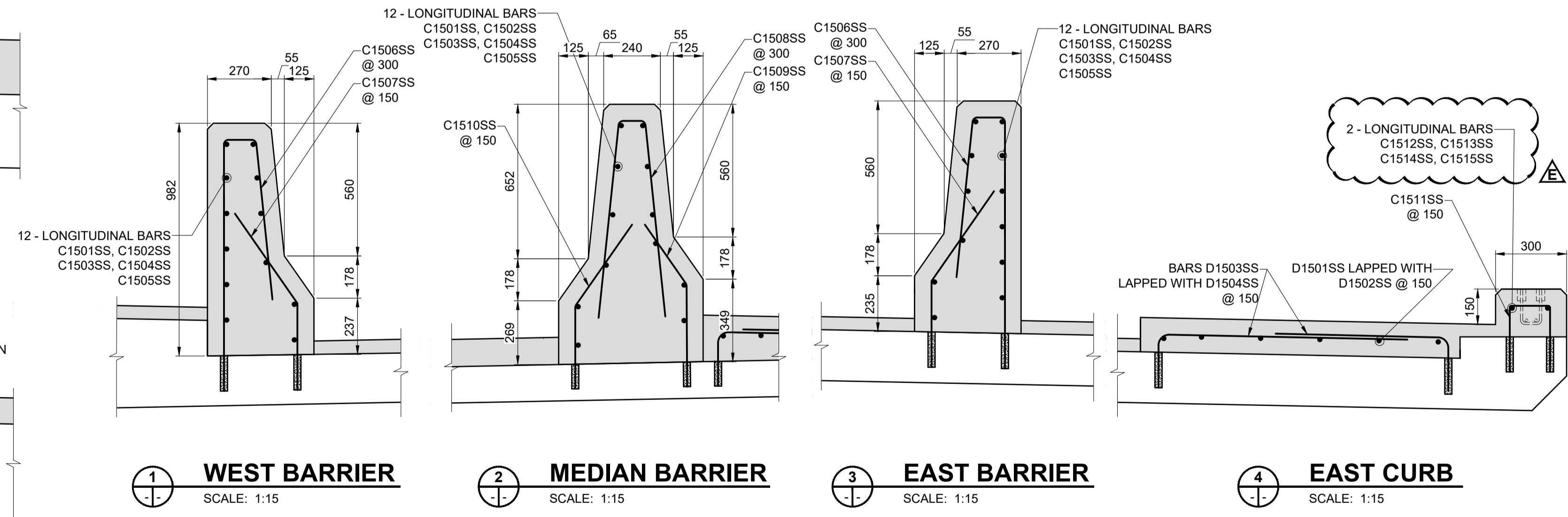
**SECTION B**  
106/107  
CONCRETE OVERLAY DEPTHS  
SCALE: 1:25



**DETAIL 5**  
VARIABLE CONCRETE DEPTHS AT NB LANE  
SCALE: 1:7.5



**DETAIL 6**  
VARIABLE CONCRETE DEPTHS AT NB LANE  
SCALE: 1:7.5



**1 WEST BARRIER** SCALE: 1:15  
**2 MEDIAN BARRIER** SCALE: 1:15  
**3 EAST BARRIER** SCALE: 1:15  
**4 EAST CURB** SCALE: 1:15

**BARRIER REINFORCING NOTE:**

1. FOR BARRIER AND CURB LONGITUDINAL REINFORCING LAYOUT, REFER TO BARRIER AND CURB ELEVATIONS SHEET 108.

**STRUCTURAL CONCRETE NOTES:**  
1. EPOXY GROUT FOR DOWELS SHALL BE HILTI HIT-RE 500-V3 OR EQUIVALENT.  
2. ALL STEEL DOWELS SHALL BE 15M @ 150 O.C. WITH 100MM EMBEDMENT UNLESS NOTED OTHERWISE.



**METRIC**  
WHOLE NUMBERS INDICATE MILLIMETRES  
DECIMALIZED NUMBERS INDICATE METRES

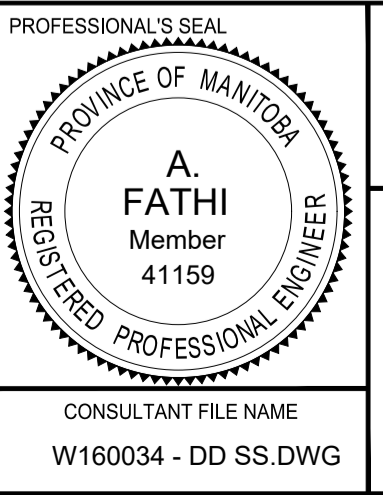
**LOCATION APPROVED**  
UNDERGROUND STRUCTURES

DATE: \_\_\_\_\_

**NOTE:**  
LOCATION OF UNDERGROUND STRUCTURES AS SHOWN ARE BASED ON THE BEST INFORMATION AVAILABLE BUT NO GUARANTEE IS GIVEN THAT ALL EXISTING UTILITIES ARE SHOWN OR THAT THE GIVEN LOCATIONS ARE EXACT. CONFIRMATION OF EXISTENCE AND EXACT LOCATION OF ALL SERVICES MUST BE OBTAINED FROM THE INDIVIDUAL UTILITIES BEFORE PROCEEDING WITH CONSTRUCTION.

No.	REVISIONS	DATE	BY
E	ISSUED FOR ADDENDUM 1	18/10/05	BAP
D	ISSUED FOR TENDER	18/09/04	BAP
C	ISSUED FOR 95% DESIGN REVIEW	18/08/07	BAP
B	ISSUED FOR 50% DESIGN REVIEW REV 1	18/06/28	AF
A	ISSUED FOR 50% DESIGN REVIEW	18/04/03	AF

<b>MORRISON HERSHFIELD</b>	
DESIGNED BY: AF	CHECKED BY: YM
DRAWN BY: ALP	APPROVED BY: BE
HOR SCALE: AS SHOWN	RELEASED FOR CONSTRUCTION
VERT SCALE: AS SHOWN	N/A
DATE: _____	DATE: _____



**THE CITY OF WINNIPEG**  
PUBLIC WORKS DEPARTMENT  
ENGINEERING DIVISION

**EMPRESS STREET PROJECT**  
OVERPASS REHABILITATION WORKS  
SUPERSTRUCTURE  
STRUCTURAL CONCRETE AND REINFORCING DETAILS

CITY DRAWING NUMBER: P-3494-107  
SHEET 107 OF 169  
DRAWING No. 107  
REV E

CONSULTANT FILE NAME: W160034 - DD SS DWG

BID OPPORTUNITY No. 602-2018