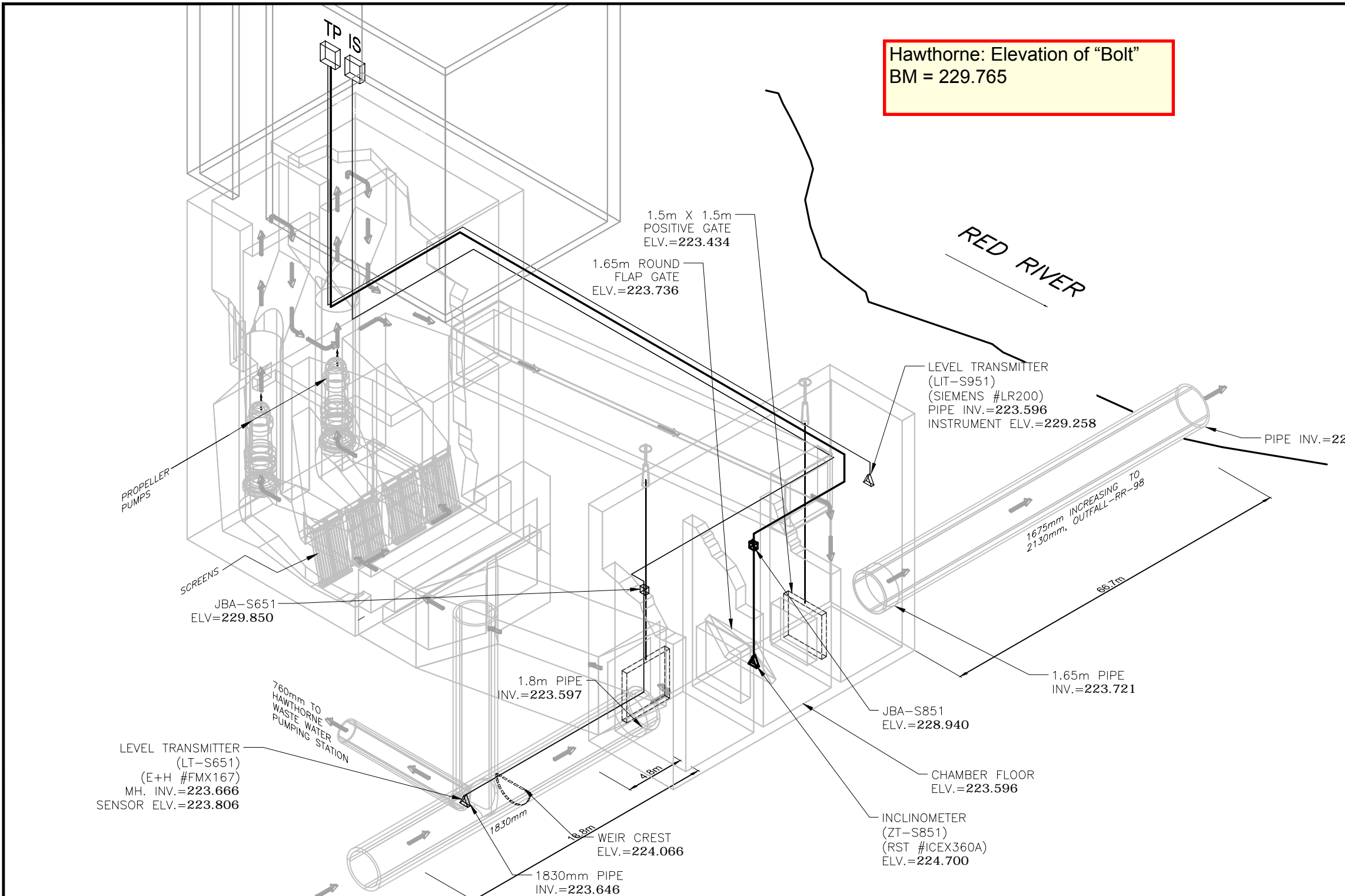


\\CD1201-F02\work_group\1112\active\111214720\0300_drawing\0302_sheet_files\08_electrical\Phase 1 And Phase 2 New Drawings\Phase 2 Drawings\Hawthorne\14720e-1301-haw.dwg
 2015/04/16 10:14 AM By: Bekker, Kyle



Hawthorne: Elevation of "Bolt"
BM = 229.765

LEGEND	
RTU-	REMOTE TERMINAL UNIT PANEL
DP -	POWER DISTRIBUTION PANEL
TP -	TERMINATION PANEL
IS -	INTRINSIC SAFETY BARRIER PANEL
JB -	JUNCTION BOX
—	INSTRUMENTATION CABLE
FT -	FLOW METER TRANSMITTER
∇	FLOW METER SENSOR
∇	LEVEL TRANSMITTER, INCLINOMETER

NOTES:
 ENDRESS+HAUSER #FMX 167
 HYDROSTATIC LEVEL TRANSMITTER
 RST INSTRUMENTS #ICEX360A
 SIEMENS # LR200 RADAR LEVEL
 TRANSMITTER
 FLOOD LEVEL = 229.04
 BOLD ELEVATIONS FROM STANTEC

CITY OF WINNIPEG TO REPLACE
 EXISTING INSTRUMENT AND
 JUNCTION BOX TAGS TO MATCH
 TAGS ON DRAWINGS

TBM Description, Elevation = 229.156
 Center punch on N Rim of MH, 1.0m SE
 of Hydro Pole on NW Corner of Kildonan
 DR and Hawthorne PL

WARNING

IF POWER EQUIPMENT OR EXPLOSIVES ARE TO BE USED
 FOR EXCAVATION ON THIS PROJECT THE CONTRACTOR
 MUST:
 1) NOTIFY THE GAS COMPANY OF THE PROPOSED LOCATION
 OF EXCAVATION.
 2) TAKE PRECAUTION TO AVOID DAMAGE TO GAS COMPANY
 INSTALLATIONS.
 SEE PROVINCIAL REGULATION 140/92 FOR DETAILS

METRIC

WHOLE NUMBERS INDICATE MILLIMETRES
 DECIMALIZED NUMBERS INDICATE METRES

APEGM
 Certificate of Authorization
 Stantec Consulting Ltd.
 No. 1301

LOCATION APPROVED UNDERGROUND STRUCTURES	
SUPV. U/G STRUCTURES COMMITTEE	DATE

NOTE:
 LOCATION OF UNDERGROUND STRUCTURES AS SHOWN ARE BASED ON THE BEST INFORMATION AVAILABLE BUT NO GUARANTEE IS GIVEN THAT ALL EXISTING UTILITIES ARE SHOWN OR THAT THE GIVEN LOCATIONS ARE EXACT. CONFIRMATION OF EXISTENCE AND EXACT LOCATION OF ALL SERVICES MUST BE OBTAINED FROM THE INDIVIDUAL UTILITIES BEFORE PROCEEDING WITH CONSTRUCTION.

B.M. ELEV.			

NO.	REVISIONS	DATE	BY
C	AS-BUILT DRAWING	15.04.16	J.C.
B	ISSUED FOR CLIENT REVIEW	15.02.11	J.C.
A	ISSUED FOR CLIENT REVIEW	14.01.15	J.C.

Stantec Consulting Ltd.
 905 Waverley Street, Winnipeg, Manitoba
 Tel 204-489-5900 Fax 204-453-9012

DESIGNED BY	S.T.	CHECKED BY	J.C.
DRAWN BY	K.B.	APPROVED BY	J.C.
HOR. SCALE:	N.T.S.	RELEASED FOR CONSTRUCTION:	
VERTICAL:		DATE	

ENGINEER'S SEAL

CONSULTANT DRAWING NO.
E-1301

THE CITY OF WINNIPEG
WATER AND WASTE DEPARTMENT

CSO OUTFALL MONITORING
HAWTHORNE
3D ISOMETRIC PLAN

SHEET	OF
1	2
CAD FILE DRAWING NUMBER 14720e-1301-haw.dwg	
CITY DRAWING NUMBER I-0145-A-A0202-001-00	