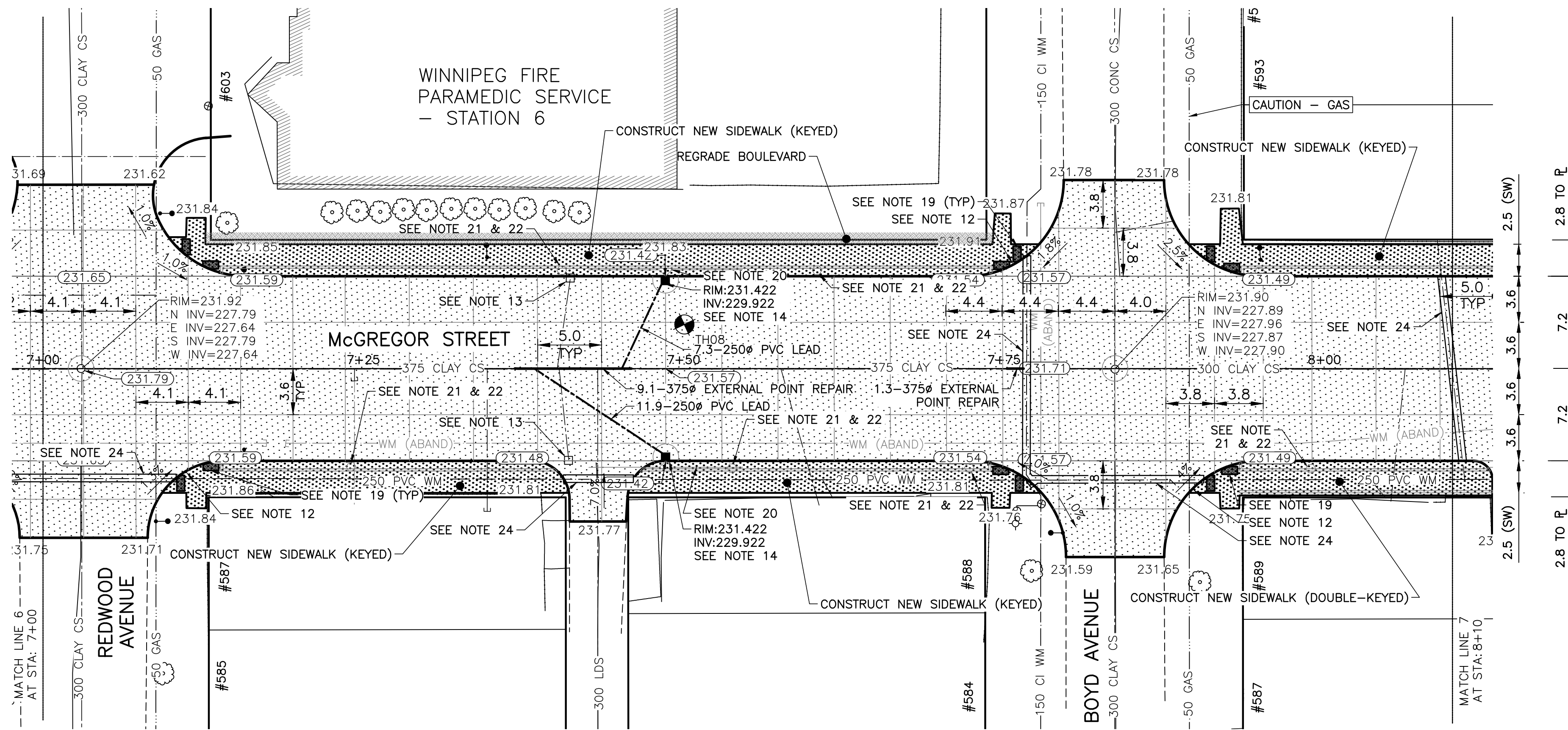
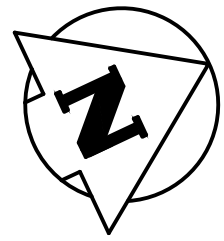
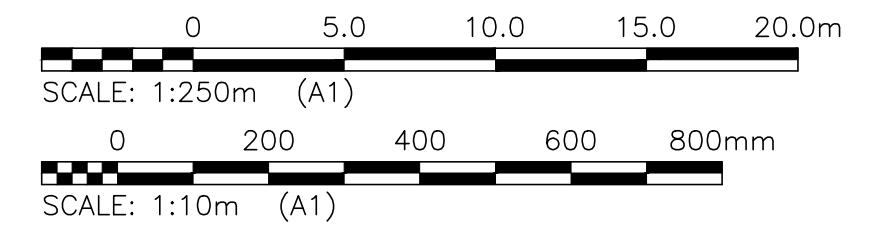
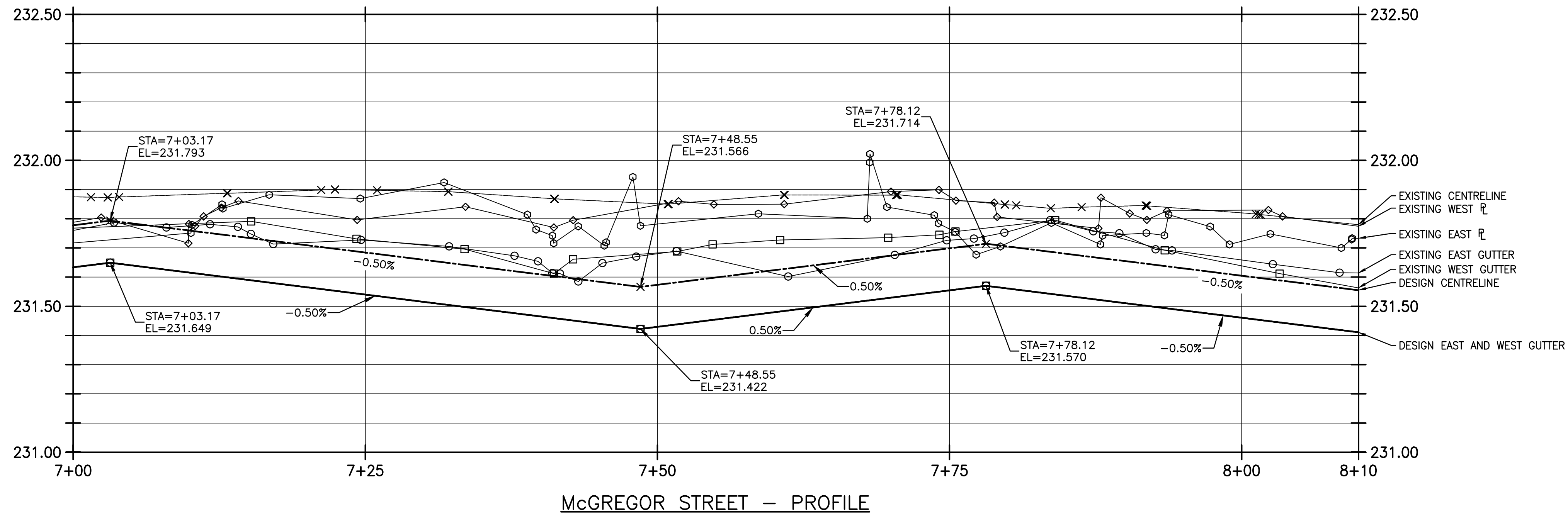


**NOTES:**

1. STATION IN CENTRE OF MCGREGOR RIGHT-OF-WAY UNLESS OTHERWISE NOTED.
2. BASELINE IS CENTRELINE OF MCGREGOR RIGHT-OF-WAY.
3. NORTH PROPERTY LINE OF SELKIRK AVENUE IS STA 1+00.0
4. ALL MEASUREMENTS TO BACK OF CURB.
5. ALL EXISTING TREES TO BE PROTECTED AND MAINTAINED THROUGHOUT CONSTRUCTION UNLESS NOTED OTHERWISE.
6. ALL BUS STOPS WITHIN LIMITS OF CONSTRUCTION TO BE TEMPORARILY RELOCATED BY OTHERS DURING WORKS.
7. HAND OR SOFT DIG METHODS REQUIRED OVER GAS UTILITIES AT INTERVALS DETERMINED BY THE ENGINEER TO DETERMINE DEPTH OF COVER.
8. NO WORKS, INCLUDING CONCRETE CUTTING OR BREAKING, TO BE UNDERTAKEN NEAR GAS LINES UNTIL DEPTH OF COVER IS DETERMINED AND A MANITOBA HYDRO SAFETY WATCH REPRESENTATIVE IS ON SITE.
9. ANY GAS MAINS OR SERVICES EXPOSED IN THE EXCAVATION AREA TO BE ROCK WRAPPED IN ACCORDANCE WITH MANITOBA HYDRO STANDARDS PRIOR TO WORK PROCEEDING ON SITE.
10. NO VIBRATORY COMPACTION PERMITTED WITHIN 1M OF GAS MAINS.
11. INSTALL MODIFIED BARRIER CURB AT ALL INTERSECTION RADII, ALLEY RADII, AND BULLNOSES.
12. CONSTRUCT NEW MONOLITHIC CURB RAMP (10mm HEIGHT INTEGRAL)
13. REMOVE EXISTING CATCHBASIN AND ABANDON LEAD.
14. INSTALL NEW CATCHBASIN (SD-024), COMPLETE WITH 250# LEAD @ 2% MINIMUM GRADE.
15. INSTALL NEW CATCHBASIN (SD-025), COMPLETE WITH 250# LEAD @ 2% MINIMUM GRADE.
16. REMOVE AND REPLACE EXISTING CATCHBASIN (SD-024), COMPLETE WITH 250# LEAD @ 2% MINIMUM GRADE.
17. TRANSVERSE JOINTS SPACED AT 5.0 INTERVALS UNLESS OTHERWISE NOTED.
18. ADJUST ALL WATER VALVES, MANHOLES AND CATCH BASINS TO GRADE.
19. INSTALL DETECTABLE WARNING SURFACE TILE (SD-229AB) IN ALL CORNERS OF STREET INTERSECTIONS.
20. INSTALL 6.0-150# SUBDRAIN (SD-245) BOTH SIDES OF ALL PROPOSED CATCHBASINS.
21. REMOVE EXISTING SIGN
22. INSTALL MOUNTING SLEEVE AT LOCATIONS INDICATED
23. APPROACH GRADES SHOWN REPRESENT AVERAGE SLOPES. CROSSFALL ACROSS SIDEWALK TRAVEL PATH TO BE 4% OR LESS.
24. INSULATE ALL WATERMAINS AND SERVICES UNDER NEW PAVEMENT IN ACCORDANCE WITH SD-018.

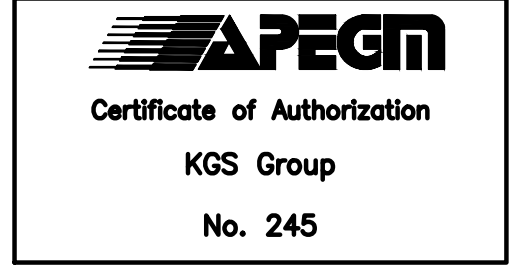


LOCATIONS OF UNDERGROUND STRUCTURES AS SHOWN ARE BASED ON THE BEST INFORMATION AVAILABLE. BUT NO GUARANTEE IS GIVEN THAT ALL EXISTING UTILITIES ARE SHOWN OR THAT THE GIVEN LOCATIONS ARE EXACT. CONFIRMATION OF THE EXISTENCE AND EXACT LOCATION OF ALL SERVICES MUST BE OBTAINED FROM INDIVIDUAL UTILITIES BEFORE PROCEEDING WITH CONSTRUCTION.

**PROPERTY LIMITS DELINEATION**  
DELINEATION OF PROPERTY LIMITS AS SHOWN ON THIS DWG DOES NOT REPRESENT A "LEGAL SURVEY". KGS GROUP MAKES NO REPRESENTATION OR WARRANTY AS TO THE ACCURACY OF PROPERTY LIMITS DELINEATED ON THIS DWG, NOR ON THE DIMENSIONAL ACCURACY OF DWG FEATURES RELATIVE TO THOSE PROPERTY LIMITS.

**WARNING**  
NOTIFY THE GAS COMPANY OF THE PROPOSED LOCATION OF EXCAVATION. TAKE PRECAUTION TO AVOID DAMAGE TO GAS COMPANY INSTALLATIONS. SEE PROVINCIAL REGULATION 210/72 FOR DETAILS.

**METRIC**  
WHOLE NUMBERS INDICATE MILLIMETRES  
DECIMALIZED NUMBERS INDICATE METRES



300_LDS	LAND DRAINAGE SEWER	300_LDS		TEST HOLE			
250_WWS	WASTE WATER SEWER	250_WWS		GUY WIRE			
	GAS			LIGHT STANDARD			
	HYDRO			BACK OF CURB			
	M.T.S.			CONCRETE			
150_WM	WATERMAIN	150_WM		ASPHALT			
	HYDRANT			SIDEWALK			
	VALVE			PROPERTY LINE			
	MANHOLE			SURVEY BAR			
	CATCH BASIN			GEODETIC BENCHMARK			
	CURB INLET			ELEVATION			
	POLES						
EXISTING	LEGEND-PLAN	PROPOSED	EXISTING	LEGEND-PLAN	PROPOSED	EXISTING	LEGEND-PROFILE

<b>LOCATION APPROVED UNDERGROUND STRUCTURES</b>		B.M. KGS_BASE ELEV. 249.213	COORDINATE SYSTEM: CGVD28
SUPV. U/G STRUCTURES COMMITTEE	DATE		
NOTE: LOCATION OF UNDERGROUND STRUCTURES AS SHOWN ARE BASED ON THE BEST INFORMATION AVAILABLE BUT NO GUARANTEE IS GIVEN THAT ALL EXISTING UTILITIES ARE SHOWN OR THAT THE GIVEN LOCATIONS ARE EXACT. CONFIRMATION OF EXISTENCE AND EXACT LOCATION OF ALL SERVICES MUST BE OBTAINED FROM THE INDIVIDUAL UTILITIES BEFORE PROCEEDING WITH CONSTRUCTION.			
B	RE-ISSUED FOR TENDER	18/04/12	
A	ISSUED FOR TENDER	18/04/05	
NO.	REVISIONS	DATE	BY

		ENGINEER'S SEAL
DESIGNED BY: JB	CHECKED BY:	PROJECT TITLE <b>2018 REGIONAL STREET PACKAGE</b> <b>McGREGOR STREET</b> PLAN AND PROFILE <b>07+00.00 TO 08+10.00</b>
DRAWN BY: IT	APPROVED BY:	
HOR. SCALE: 1:250	RELEASED FOR CONSTRUCTION:	CONSULTANT DRAWING NO. <b>C107</b>
VERTICAL: 1:10	DATE	SHEET OF <b>8</b> OF <b>13</b>
DATE: 2018/01/08	DATE	COMPUTER FILE NAME 17-0107-022_CALL.DWG
		CITY DRAWING NUMBER P-3491-08

**THE CITY OF WINNIPEG**  
 PUBLIC WORKS DEPARTMENT  
 ENGINEERING DIVISION

\\K:\FILE-A\PROJECTS\2017\17-0107-022\DWG\MUN\17-02078-608-CALL.DWG  
 PLOT 1:1 (A-1)