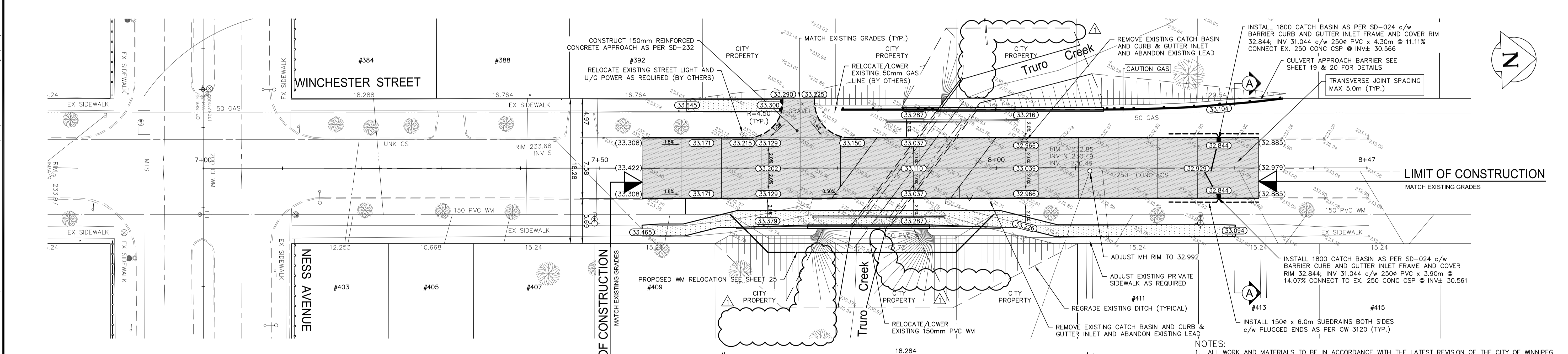
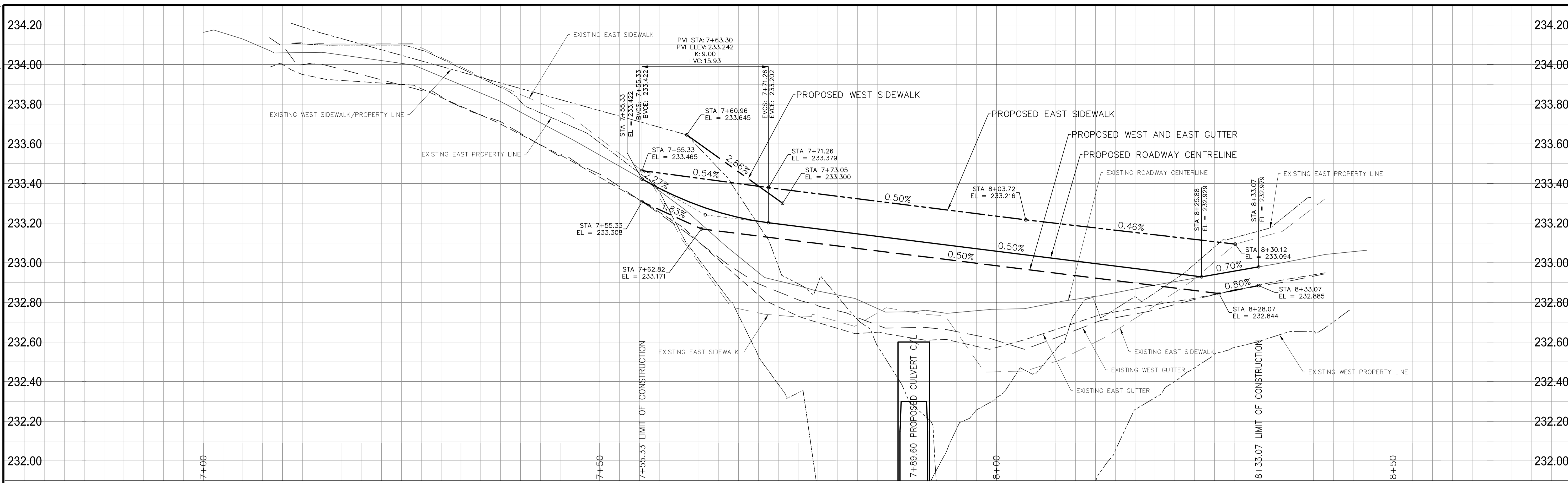


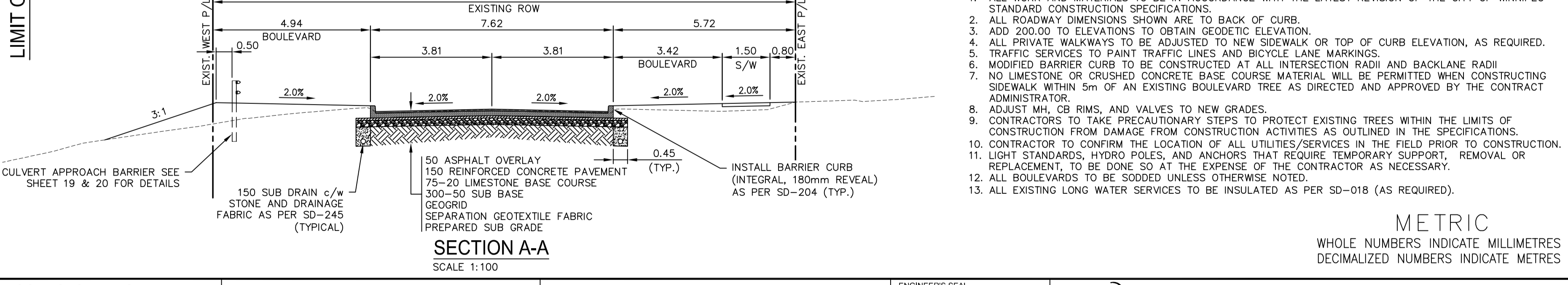
Plot: December 8, 2017, at 12:52:05 PM | Last saved by: Referenc...  
 File: P:\2017\17M-00806-00 - Truro Creek Culvert Replacements\Win\Drawings\17M-00806-00 Road Reconstruction Plan Profile and Section | Layout: 24 Road Reconstruction Plan Profile and Section



**ENGINEERS  
GEOLOGISTS  
MANITOBA**  
 Certificate of Authorization  
**WSP Canada Group Limited**  
 No. 6657

NOTE:  
 These design documents are prepared solely for the use by the party with whom the design professional has entered into a contract and there are no representations of any kind made by the design professional to any party with whom the design professional has not entered into a contract.

EXISTING	LEGEND-PLAN	PROPOSED	EXISTING	LEGEND-PLAN	PROPOSED	EXISTING	LEGEND-PROFILE	PROPOSED
---	WATER MAIN	---	---	HYDRO POLE & LIGHT STANDARD	---	---	---	---
---	LAND DRAINAGE SEWER	---	---	LIGHT STANDARD OR TRAFFIC SIGNAL	---	---	---	---
---	WASTE WATER SEWER	---	---	HYDRO POLE	---	---	---	---
---	HYDRO	---	---	SIGN	---	---	---	---
---	M.T.S.	---	---	CURB RAMP	---	---	---	---
---	GAS	---	---	DETECTABLE WARNING SURFACE TILE	---	---	---	---
---	SIGNALS	---	---	EDGE OF SIDEWALK	---	---	---	---
○	MANHOLE	●	---	FENCE	---	---	---	---
△	CATCH BASIN	▲	---	PROPERTY LINE	---	---	---	---
□	CURB INLET/CATCH PIT	■	---	EDGE OF ASPHALT	---	---	---	---
◇	UTILITIES ADJUSTED	◇	---	EDGE OF CONCRETE	---	---	---	---
+	PLUG	+	---	MODIFIED BARRIER CURB	---	---	---	---
◇	HYDRANT	◇	---	BARRIER CURB	---	---	---	---
○	VALVE	○	---	MODIFIED BARRIER CURB	---	---	---	---
○	CURB STOP	○	---	CONCRETE SIDEWALK/MEDIAN	---	---	---	---
○	GROUND GRADE	(31.000)	---	CONCRETE PAVEMENT	---	---	---	---
---	PAVEMENT GRADE	(31.000)	---	ASPHALT OVERLAY	---	---	---	---
---	ANCHOR	---	---	ASPHALT MILLING/PAVEMENT	---	---	---	---
#111	CIVIC ADDRESS	---	---	---	---	---	---	---
---	IRON BAR	---	---	---	---	---	---	---
---	LEGEND-PLAN	---	---	---	---	---	---	---



**LOCATIONS APPROVED UNDERGROUND STRUCTURES**  
 SIGNED BY: \_\_\_\_\_ DATE: \_\_\_\_\_  
 SUPV U/G STRUCTURES

LOCATION OF UNDERGROUND STRUCTURES AS SHOWN ARE BASED ON THE BEST INFORMATION AVAILABLE BUT NO GUARANTEE IS GIVEN THAT ALL EXISTING UTILITIES ARE SHOWN OR THAT THE GIVEN LOCATIONS ARE EXACT CONFIRMATION OF EXISTENCE AND EXACT LOCATION OF ALL SERVICES MUST BE OBTAINED FROM THE INDIVIDUAL UTILITIES BEFORE PROCEEDING

G.B.M. = TOP NUT OF FIRST HYDRANT SOUTH OF INTERSECTION BETWEEN NESS AVENUE AND LINWOOD STREET  
 ELEV. = 233.659

DESIGNED BY	VM	CHECKED BY	TP/VM
DRAWN BY	ED	APPROVED BY	JL
HOR. SCALE	1:250	RELEASED FOR CONSTRUCTION	
VERTICAL	1:10	DATE	17.11.23

WSP Canada Group Limited  
 93 Lombard Avenue, Suite 111  
 Winnipeg MB R3B 3B1  
 T+1 204-943-3178  
 F+1 204-943-9488  
 www.wsp.com

ENGINEER'S SEAL  
 PROVINCE OF MANITOBA  
 V.M. MAROTI  
 REGISTERED PROFESSIONAL ENGINEER

**THE CITY OF WINNIPEG**  
 PUBLIC WORKS DEPARTMENT  
 ENGINEERING DIVISION

**TRURO CREEK CULVERT REPLACEMENT AT WINCHESTER STREET**

ROAD RECONSTRUCTION  
 PLAN PROFILE AND SECTION

CITY DRAWING NUMBER: C322-17-24  
 BID OPPORTUNITY NUMBER: 1014-2017  
 SHEET OF: 24 OF 25  
 REV 1