

- NOTES:**
1. REFER TO GENERAL DEMOLITION NOTES DRAWING 1-0102-DAAA-ADD01
 2. CONFIRMED ASBESTOS CONTAINING MATERIALS IN HEATING WATER FITTINGS INSULATION. REFER TO ASBESTOS ABATEMENT SPECIFICATIONS FOR ABATEMENT PROCEDURES.
 3. REMOVE HEATING WATER INSULATION TO THE EXTENT REQUIRED TO PERFORM THE WORK.

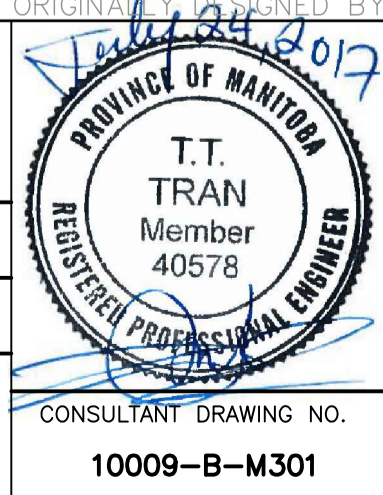
REMOVE AND REPLACE EXISTING HOT WATER CIRCULATING PUMPS. REFER TO SPECIFICATION SECTION 23 21 13 FOR DETAILED REQUIREMENTS. NOTES 2 AND 3.

1 PLAN AT ELEVATION 227.381
1:75

AS CONSTRUCTED
DATE: SEPTEMBER 1993 BY: P.R.B.
APPROVED BY: _____

NO.	REVISIONS	DATE	BY	DATE	BY
4	ISSUED FOR ADDENDUM 7 - 976-2016	07/17	JBC		
3	ISSUED FOR CONSTRUCTION - 976-2016	04/17	K.F.		
2	ISSUED FOR 90% PRELIMINARY REVIEW	08/16	K.F.		
1	AS CONSTRUCTED	09/93	P.R.B.		
0	ISSUED FOR TENDER	12/91	E.H.		
-	ISSUED FOR CITY REVIEW	05/91	L.O.C.		

B.M. ELEV.			
MacLAREN ENGINEERS INC. WARDROP ENGINEERING INC.			
ENGINEERING CONSULTANTS			
DESIGNED BY	E.G. / R.R.	CHECKED BY	L.O.C.
DRAWN BY	E.G.	APPROVED BY	
HOR. SCALE:	AS NOTED	RELEASED FOR CONSTRUCTION:	
VERTICAL:		DATE	
MAY 1991			



ORIGINALY DESIGNED BY: T.T. TRAN

THE CITY OF WINNIPEG
 WORKS AND OPERATIONS DIVISION
 WATERWORKS, WASTE & DISPOSAL DEPARTMENT

SOUTH END WATER POLLUTION CONTROL CENTRE
 SERVICE BUILDING EXPANSION - MECHANICAL

HVAC PIPING SYSTEMS
 PLAN AND SECTIONS

CITY DRAWING NUMBER: _____
 SHEET OF: _____

SEP-897

- NOTE:**
1. FOR CHILLER AUTOMATIC CHEMICAL FEED AND BLEED SYSTEM SCHEMATIC REFER TO DWG B-M306.
 2. FOR CONTROL ROOM P101 AND B105 HVAC DETAILS AND MODIFICATIONS SEE DWG B-M308.