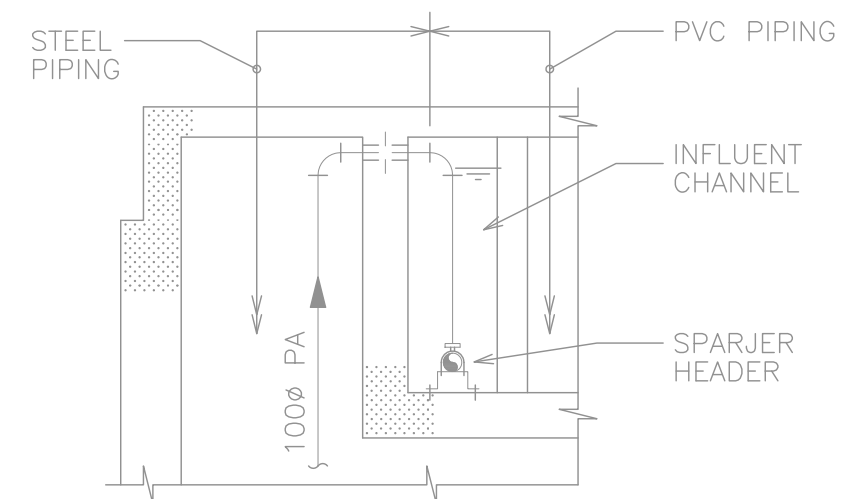
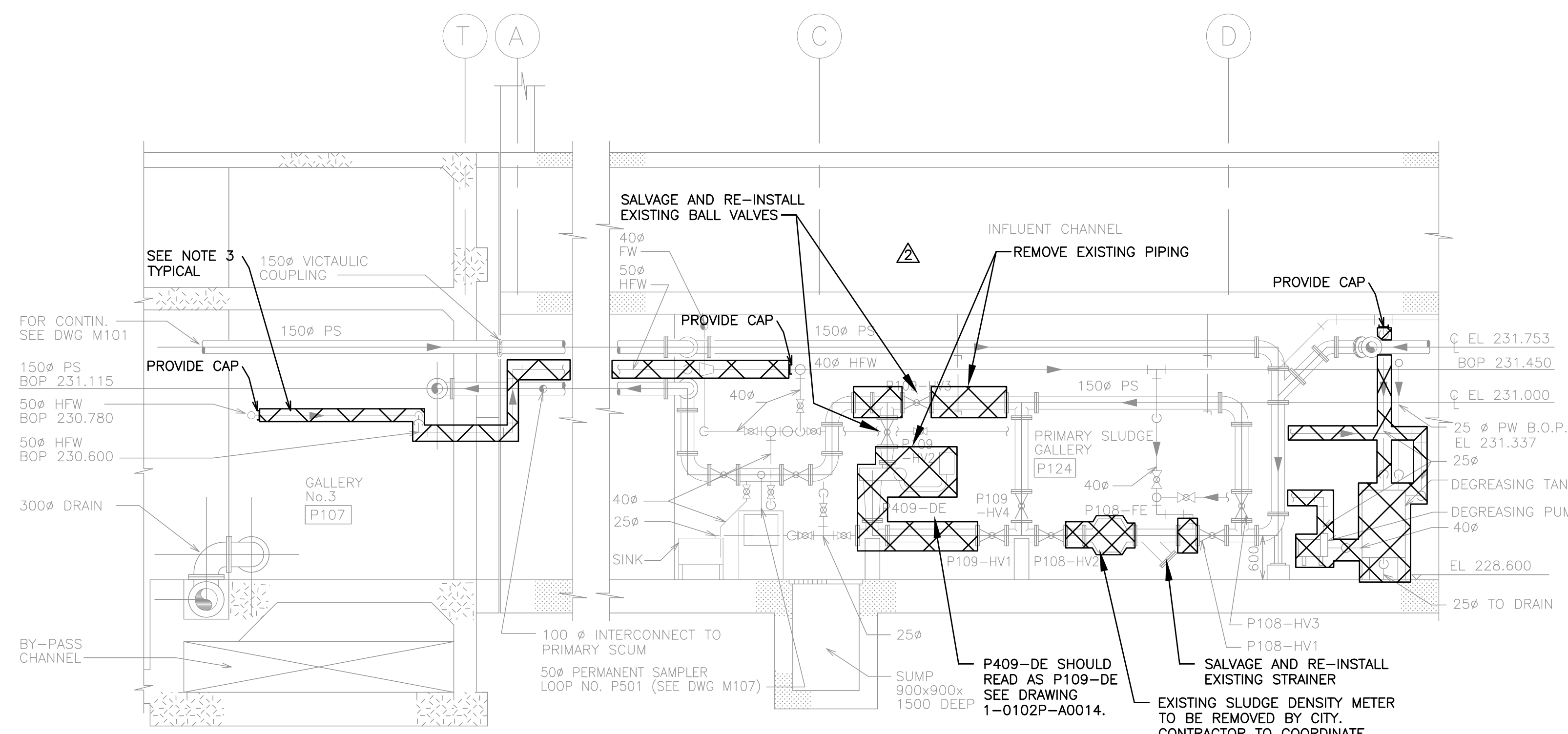


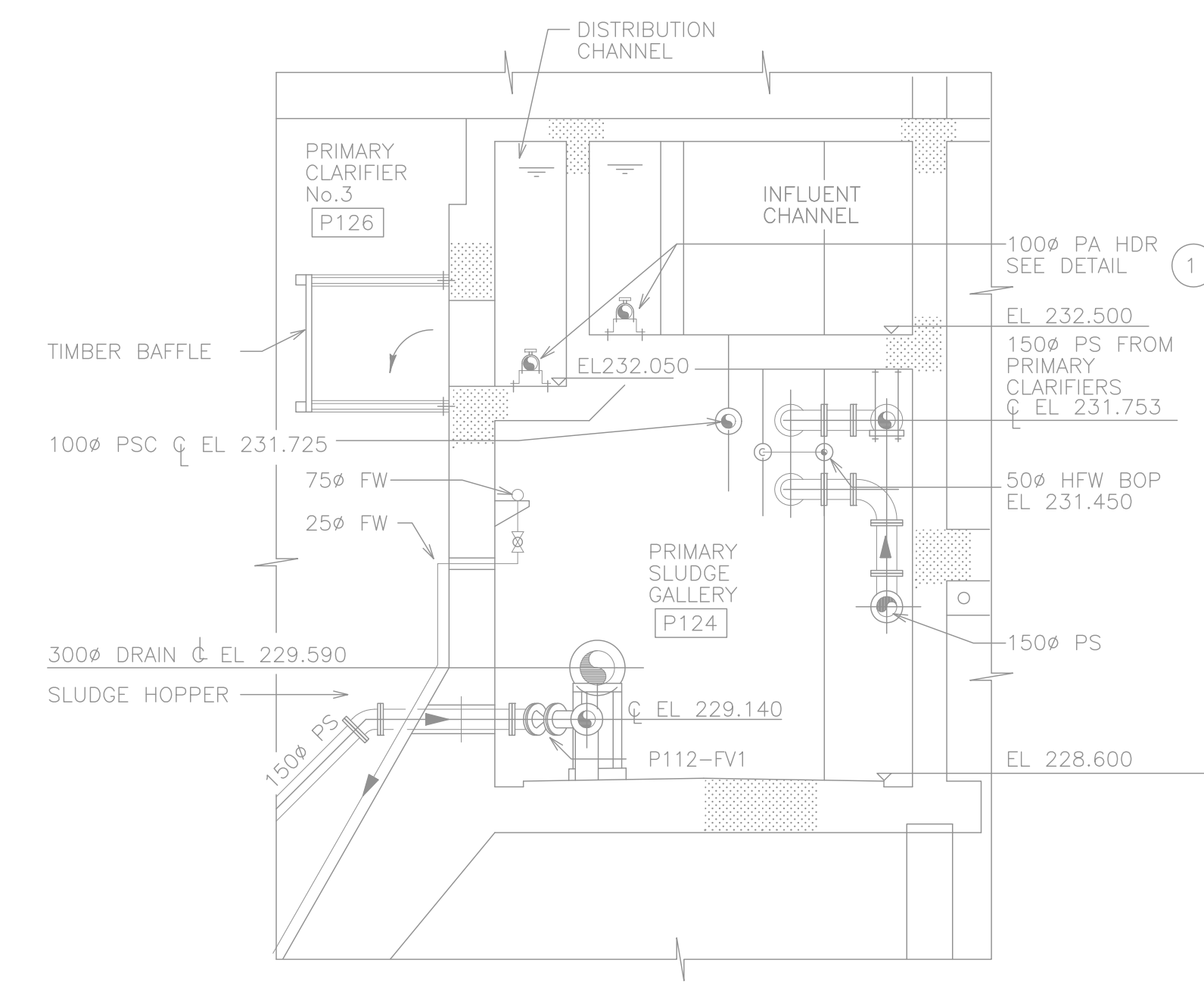
1 DETAIL
N.T.S.



10 SECTION
M103 106 1:50



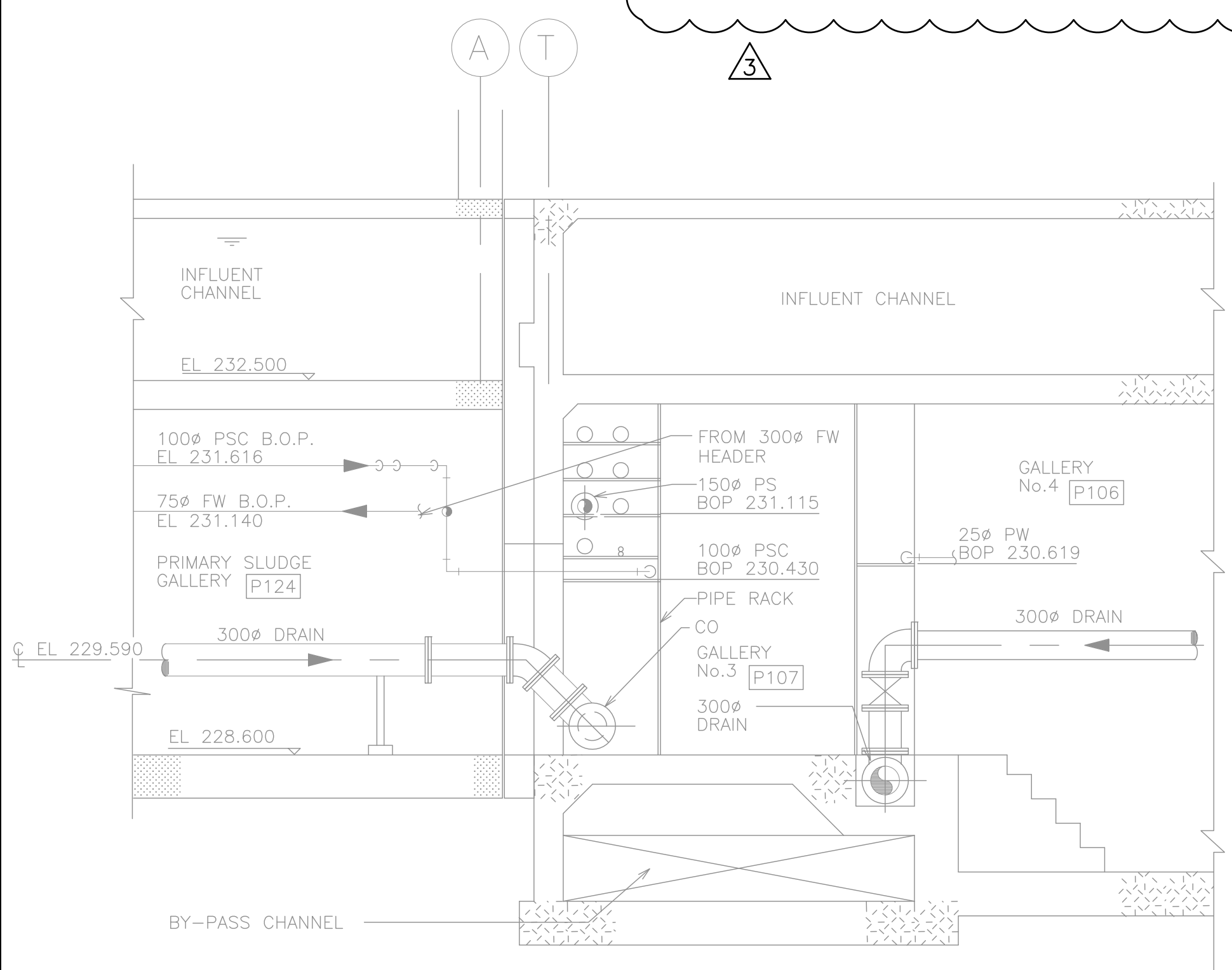
7 SECTION
M101 106 N.T.S.



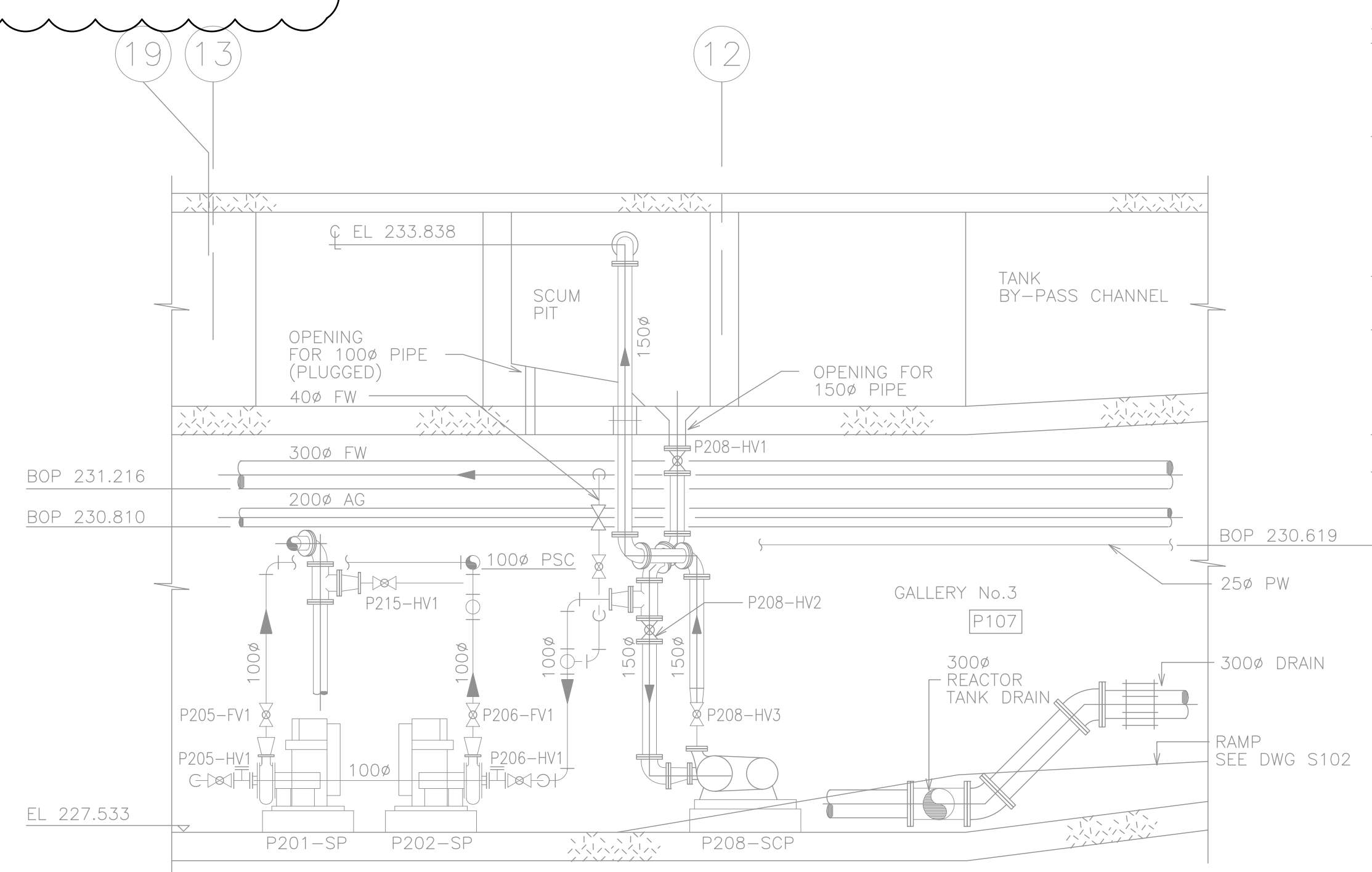
8 SECTION
M101 106 1:50

NOTES:

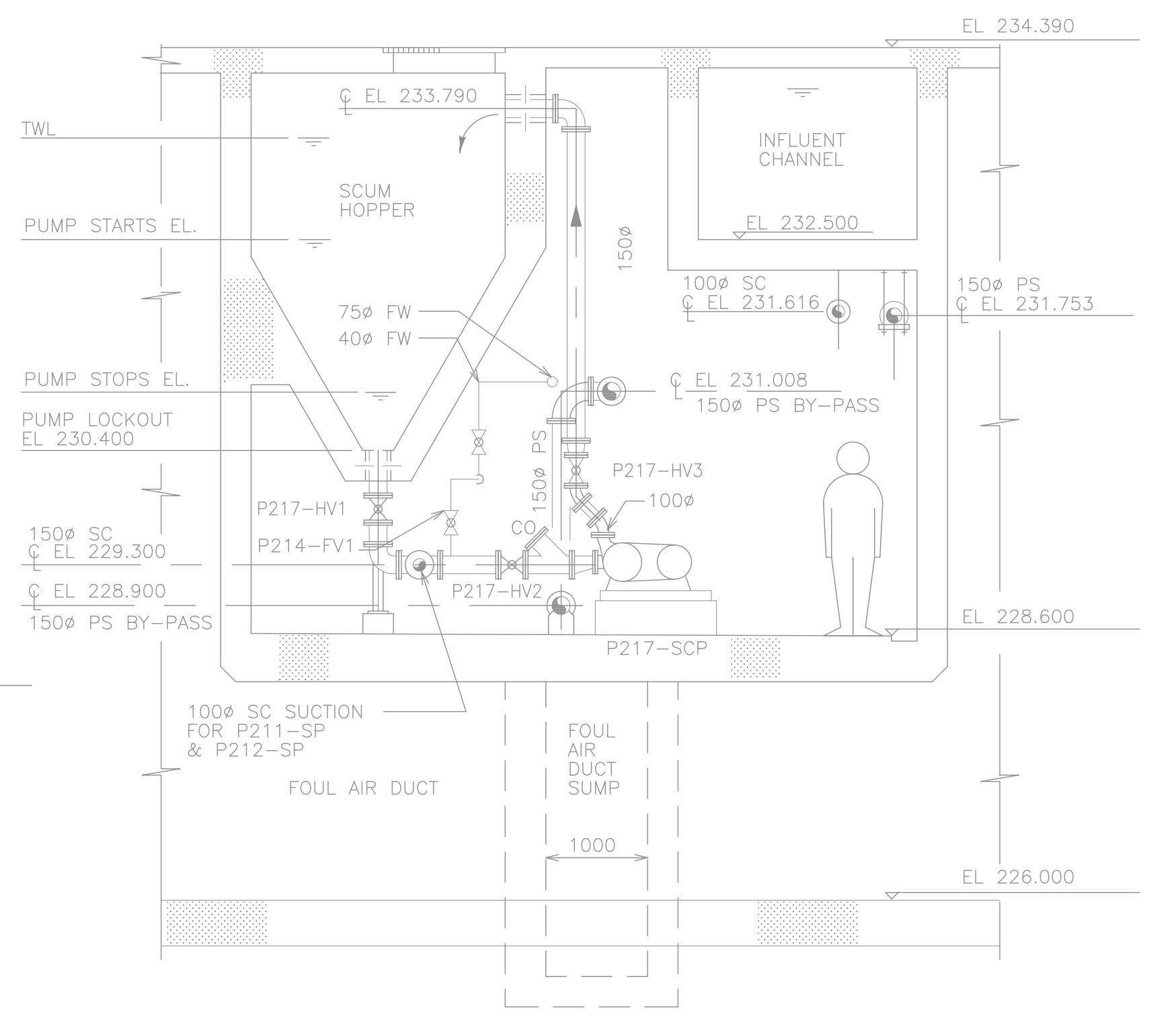
- FOR NEW CONSTRUCTION SEE PROCESS/MECHANICAL PRIMARY SLUDGE FERMENERS/THICKENERS DRAWINGS.
- REFER TO GENERAL DEMOLITION NOTES DRAWING 1-0102-DAAA-AD01.
- CONFIRMED ASBESTOS CONTAINING MATERIALS IN HIGH AND LOW PRESSURE STEAM FITTINGS INSULATION. REFER TO ASBESTOS ABATEMENT SPECIFICATIONS FOR ABATEMENT PROCEDURES.



6 SECTION
M101 106 1:50



5 SECTION
M101 106 1:50



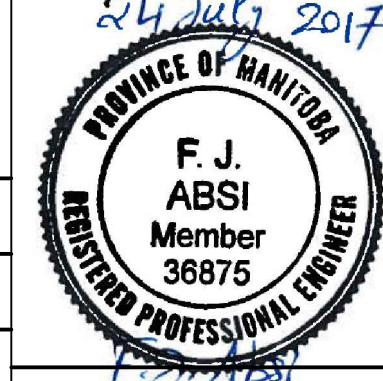
9 SECTION
M101 106 1:50

NOTE:
SEE DWG M107 FOR LEGEND

AS CONSTRUCTED
DATE: OCTOBER / 91 BY: S.Q.
APPROVED BY: _____

B.M. ELEV.									
MaCLAREN ENGINEERS INC. WARDROP ENGINEERING INC.									
ENGINEERING CONSULTANTS									
DESIGNED BY	RDJ/CS/HS	CHECKED BY	RDJ						
DRAWN BY	TL /CAD	APPROVED BY	RDJ						
HOR. SCALE:	1:50	RELEASED FOR CONSTRUCTION:							
VERTICAL:		DATE							
NO. REVISIONS	DATE	BY	DATE						
3	ISSUED FOR ADDENDUM 7 - 976-2016	07/17	JBC						
2	ISSUED FOR CONSTRUCTION - 976-2016	04/17	K.F.						
1	AS CONSTRUCTED	10/91	S.Q.						
0	ISSUED FOR TENDER	08/89	E.H.						

ORIGINALLY DESIGNED BY



THE CITY OF WINNIPEG
WORKS AND OPERATIONS DIVISION
WATERWORKS, WASTE & DISPOSAL DEPARTMENT

SOUTH END WATER POLLUTION CONTROL CENTRE
PRIMARY CLARIFIER- MECHANICAL

CITY DRAWING NUMBER
SHEET OF

SECTIONS
SEP-260

CONSULTANT DRAWING NO.
43525 - M106