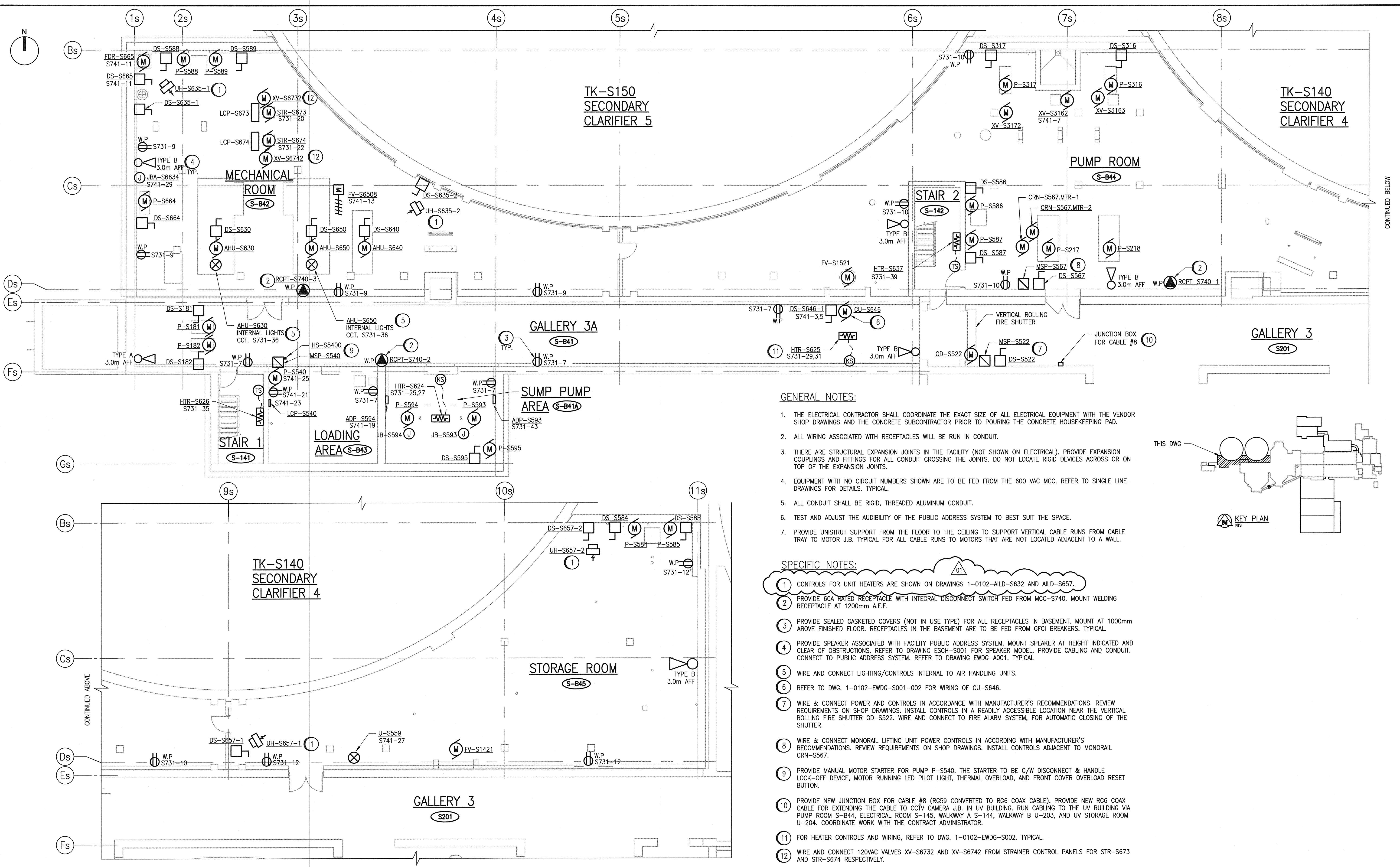


AI SIZE - 594mm x 841mm

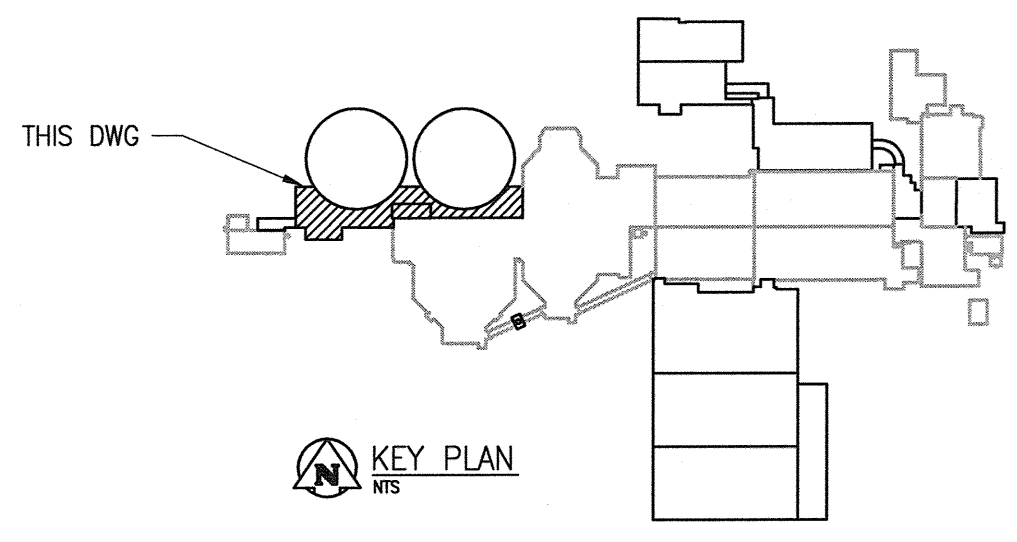


GENERAL NOTES:

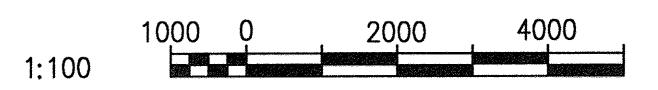
1. THE ELECTRICAL CONTRACTOR SHALL COORDINATE THE EXACT SIZE OF ALL ELECTRICAL EQUIPMENT WITH THE VENDOR SHOP DRAWINGS AND THE CONCRETE SUBCONTRACTOR PRIOR TO POURING THE CONCRETE HOUSEKEEPING PAD.
2. ALL WIRING ASSOCIATED WITH RECEPTACLES WILL BE RUN IN CONDUIT.
3. THERE ARE STRUCTURAL EXPANSION JOINTS IN THE FACILITY (NOT SHOWN ON ELECTRICAL). PROVIDE EXPANSION COUPLINGS AND FITTINGS FOR ALL CONDUIT CROSSING THE JOINTS. DO NOT LOCATE RIGID DEVICES ACROSS OR ON TOP OF THE EXPANSION JOINTS.
4. EQUIPMENT WITH NO CIRCUIT NUMBERS SHOWN ARE TO BE FED FROM THE 600 VAC MCC. REFER TO SINGLE LINE DRAWINGS FOR DETAILS. TYPICAL.
5. ALL CONDUIT SHALL BE RIGID, THREADED ALUMINUM CONDUIT.
6. TEST AND ADJUST THE AUDIBILITY OF THE PUBLIC ADDRESS SYSTEM TO BEST SUIT THE SPACE.
7. PROVIDE UNISTRUT SUPPORT FROM THE FLOOR TO THE CEILING TO SUPPORT VERTICAL CABLE RUNS FROM CABLE TRAY TO MOTOR J.B. TYPICAL FOR ALL CABLE RUNS TO MOTORS THAT ARE NOT LOCATED ADJACENT TO A WALL.

SPECIFIC NOTES:

- 1 CONTROLS FOR UNIT HEATERS ARE SHOWN ON DRAWINGS 1-0102-AILD-S632 AND AILD-S657.
- 2 PROVIDE 60A RATED RECEPTACLE WITH INTEGRAL DISCONNECT SWITCH FED FROM MCC-S740. MOUNT WELDING RECEPTACLE AT 1200mm A.F.F.
- 3 PROVIDE SEALED GASKETED COVERS (NOT IN USE TYPE) FOR ALL RECEPTACLES IN BASEMENT. MOUNT AT 1000mm ABOVE FINISHED FLOOR. RECEPTACLES IN THE BASEMENT ARE TO BE FED FROM GFCI BREAKERS. TYPICAL.
- 4 PROVIDE SPEAKER ASSOCIATED WITH FACILITY PUBLIC ADDRESS SYSTEM. MOUNT SPEAKER AT HEIGHT INDICATED AND CLEAR OF OBSTRUCTIONS. REFER TO DRAWING ESCH-S001 FOR SPEAKER MODEL. PROVIDE CABLING AND CONDUIT. CONNECT TO PUBLIC ADDRESS SYSTEM. REFER TO DRAWING EWDC-A001. TYPICAL.
- 5 WIRE AND CONNECT LIGHTING/CONTROLS INTERNAL TO AIR HANDLING UNITS.
- 6 REFER TO DWG. 1-0102-EWDG-S001-002 FOR WIRING OF CU-S646.
- 7 WIRE & CONNECT POWER AND CONTROLS IN ACCORDANCE WITH MANUFACTURER'S RECOMMENDATIONS. REVIEW REQUIREMENTS ON SHOP DRAWINGS. INSTALL CONTROLS IN A READILY ACCESSIBLE LOCATION NEAR THE VERTICAL ROLLING FIRE SHUTTER OD-S522. WIRE AND CONNECT TO FIRE ALARM SYSTEM, FOR AUTOMATIC CLOSING OF THE SHUTTER.
- 8 WIRE & CONNECT MONORAIL LIFTING UNIT POWER CONTROLS IN ACCORDING WITH MANUFACTURER'S RECOMMENDATIONS. REVIEW REQUIREMENTS ON SHOP DRAWINGS. INSTALL CONTROLS ADJACENT TO MONORAIL CRN-S567.
- 9 PROVIDE MANUAL MOTOR STARTER FOR PUMP P-S540. THE STARTER TO BE C/W DISCONNECT & HANDLE LOCK-OFF DEVICE, MOTOR RUNNING LED PILOT LIGHT, THERMAL OVERLOAD, AND FRONT COVER OVERLOAD RESET BUTTON.
- 10 PROVIDE NEW JUNCTION BOX FOR CABLE #8 (RG59 CONVERTED TO RG6 COAX CABLE). PROVIDE NEW RG6 COAX CABLE FOR EXTENDING THE CABLE TO CCTV CAMERA J.B. IN UV BUILDING. RUN CABLING TO THE UV BUILDING VIA PUMP ROOM S-B44, ELECTRICAL ROOM S-145, WALKWAY A S-144, WALKWAY B U-203, AND UV STORAGE ROOM U-204. COORDINATE WORK WITH THE CONTRACT ADMINISTRATOR.
- 11 FOR HEATER CONTROLS AND WIRING, REFER TO DWG. 1-0102-EWDG-S002. TYPICAL.
- 12 WIRE AND CONNECT 120VAC VALVES XV-S6732 AND XV-S6742 FROM STRAINER CONTROL PANELS FOR STR-S673 AND STR-S674 RESPECTIVELY.



BASEMENT PLAN
1 : 100



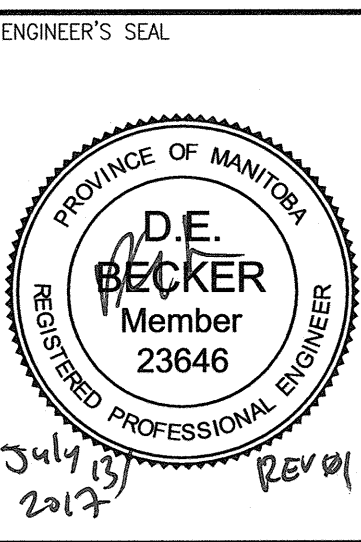
NO.	REVISIONS	DATE	DESIGN	CHECK
01	ISSUED FOR ADDENDUM 5 - 976-2016	2017/07/14	DEB	DEB
00	ISSUED FOR CONSTRUCTION - 976-2016	2017/04/05	WE	DEB

CH2MHILL.
SNC-Lavalin

DESIGNED BY: V. ELMBAN
DRAWN BY: MJ. PERSSON
SCALE: 1:100

CHECKED BY: E. RYCZKOWSKI
APPROVED BY: D. BECKER
ISSUED FOR CONSTRUCTION BY: J. SHUMKA
DATE: 2015/10/01
DATE: 2017/04/05

CONSULTANT NO.: 474248



THE CITY OF WINNIPEG
WATER AND WASTE DEPARTMENT

SOUTH END WATER POLLUTION CONTROL CENTRE
SEWPPC UPGRADING/EXPANSION PROJECT
ELECTRICAL - POWER LAYOUT
SECONDARY CLARIFIERS 4 AND 5
BASEMENT PLAN

CITY DRAWING NUMBER: 1-0102-EGAD-S003
SHEET: 001
REV: 01
SIZE: A1

REFERENCE DRAWINGS	DESCRIPTION
1-0102-EAAA-A001	ELECTRICAL, LEGEND AND DETAILS
1-0102-EHLC-S001	HAZARDOUS LOCATION, BASEMENT FLOOR PLAN
1-0102-ESCH-S001	PANEL SCHEDULES & DETAILS

LAST SAVE: 2017/07/13 - 8:07am
PATH: C:\pwworkdir\ch2mhill\wg\ve006717\0356519\1-0102-EGAD-S003.dwg

PLOT DATE: Jul 13, 2017 - 8:07am

FILE NAME: 1-0102-EGAD-S003.dwg