

1 TYPICAL SIGN SECTION SCALE: 1" = 1'-0"  
A2 | A3

- TOP OF METAL BACKER PANEL TO RUN TO U/S OF WINDOWS. PANEL TO MATCH EXISTING BUILDING PANEL COLOUR ON GRAHAM SIDE. PANEL COLOUR TO MATCH EXISTING BRICK COLOUR ON SMITH SIDE
- EXISTING PANEL FACE OF BUILDING
- CLEAR ACRYLIC BACK
- 1/8" BLACK ALUMINUM FACES
- WHITE LED LIGHTING, ELECTRICAL CONDUIT, & POWER SUPPLY
- SPACER (TYPICAL)
- 3/4" SPACERS (TYPICAL)
- 3" BLACK ALUMINUM RETURNS (TYPICAL)
- ILLUMINATED DIVIDER BAR: WHITE ACRYLIC FACES WITH BLUE VINYL, WHITE L.E.D. LIGHTING. RETURN @ TRIM CAP PAINTED BLUE. SEE ELEVATIONS FOR LENGTHS
- METAL BACKER PANEL TO EXTEND TO EXISTING PANEL SEAMS ON ALL SIDES. SEE STREET ELEVATIONS FOR LENGTHS
- BOTTOM OF METAL SIGN BOX TO RUN TO BOTTOM EDGE OF BUILDING ON GRAHAM AVENUE

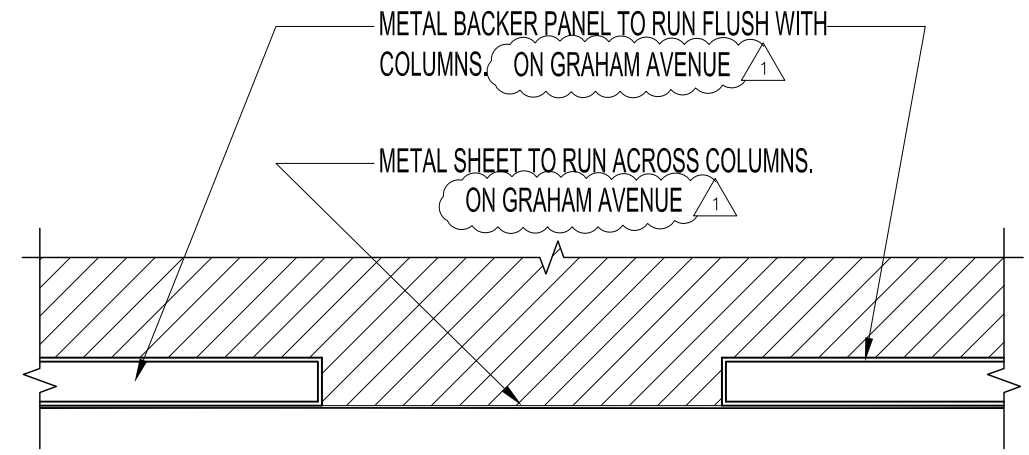
WHITE L.E.D. LIGHTING W/ ILLUMINATED HALO-LIT CHANNEL LETTERS & ELECTRICAL CONDUIT, & POWER SUPPLY

3/4" SPACERS (TYPICAL)

SEE STREET ELEVATIONS FOR LENGTHS

ON GRAHAM AVENUE

**NOTE:**  
**CONTRACT ADMINISTRATOR TO HAVE CITY PROVIDE POWER TO LOCATION OF SIGNS ON THE NORTH & WEST SIDES FOR THE CONTRACTOR'S SIGNAGE CONNECTIONS.**



2 TYPICAL SIGN SECTION SCALE: 1" = 1'-0"  
A2 | A3

REVISIONS

1	-DELETE NOTES & ADD NEW SIGN NOTES -ADD DIMENSION W/ NOTE	MMK	OCT19, 2016
---	--	-----	-------------

THE CITY OF WINNIPEG PLANNING, PROPERTY AND DEVELOPMENT DEPARTMENT MUNICIPAL ACCOMMODATIONS DIVISION 3-65 GARRY STREET, R3C 4K4			PROJECT Winnipeg Police Service Headquarters NEW EXTERIOR SIGNAGE 245 SMITH STREET		SHEET TITLE SIGNAGE SECTION	
DRAWN BY: MMK	DESIGNED BY: RL	CHECKED BY:	APPROVED BY:	DATE: 2016.07.25 eFILE: 2016050V0.dwg	SCALE: SHOWN PROJECT No: 2016-050	SHEET No: <b>A3R1</b>