

0.5 TON







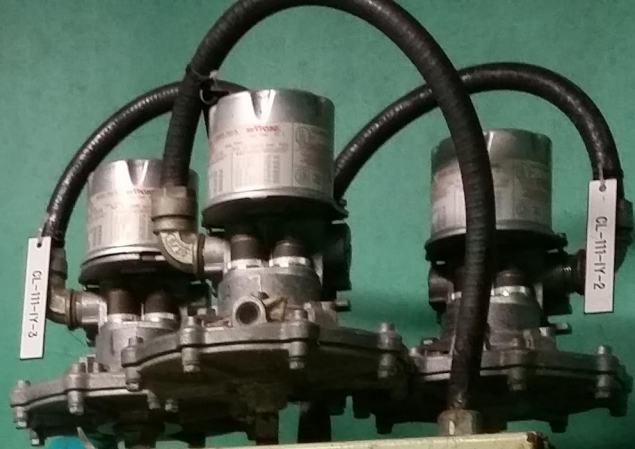








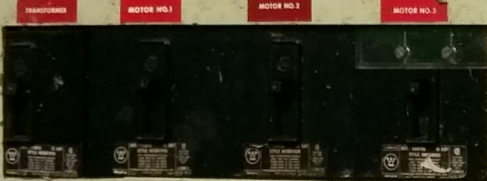




#1

#2

#3



WARNING — WARNING
DANGER — DANGER
DANGER — DANGER
DANGER — DANGER
WARNING



MOTOR NO.1

MOTOR NO.2

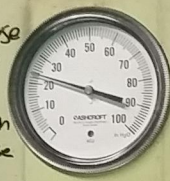
MOTOR NO.3



Purge
1- Close Green Valve (CW L→R)
2- Hold Purge button as desired
3- Open Green Valve (CCW R→L)

*Failure to Close
Valve will blow
level Gauge

*Failure to Open
Valve will cause
loss of level
(Pump won't run)



	0	CE
1	39	20
2	39	20
3	65	30
HIGH	66	



NOTICE
Condensation Collects on
Insulation Walls. Read Main-
tenance Manual before Adjust-
ing Controls.

#1

#2

#3



MOTOR NO.1

MOTOR NO.2

MOTOR NO.3

