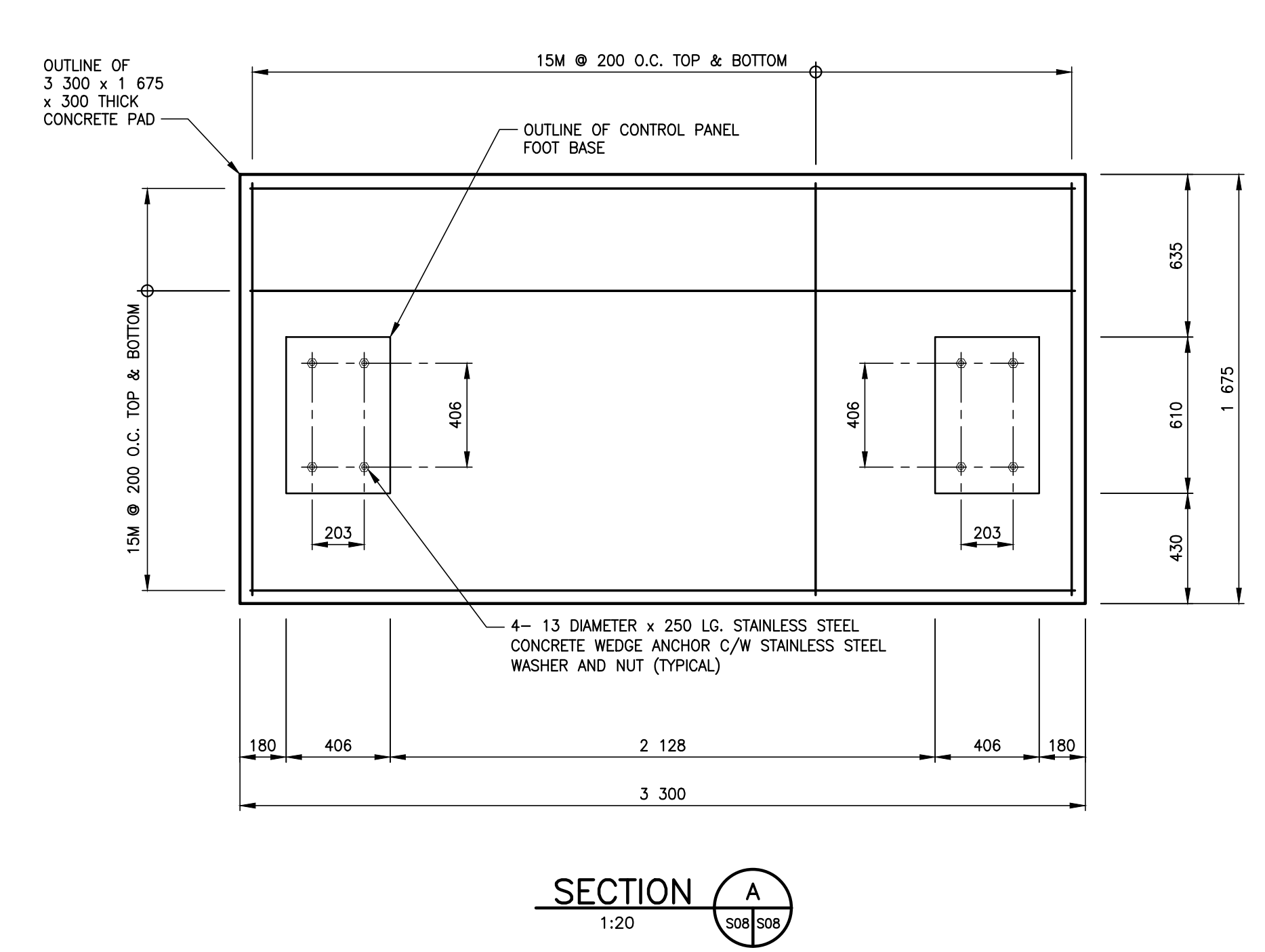
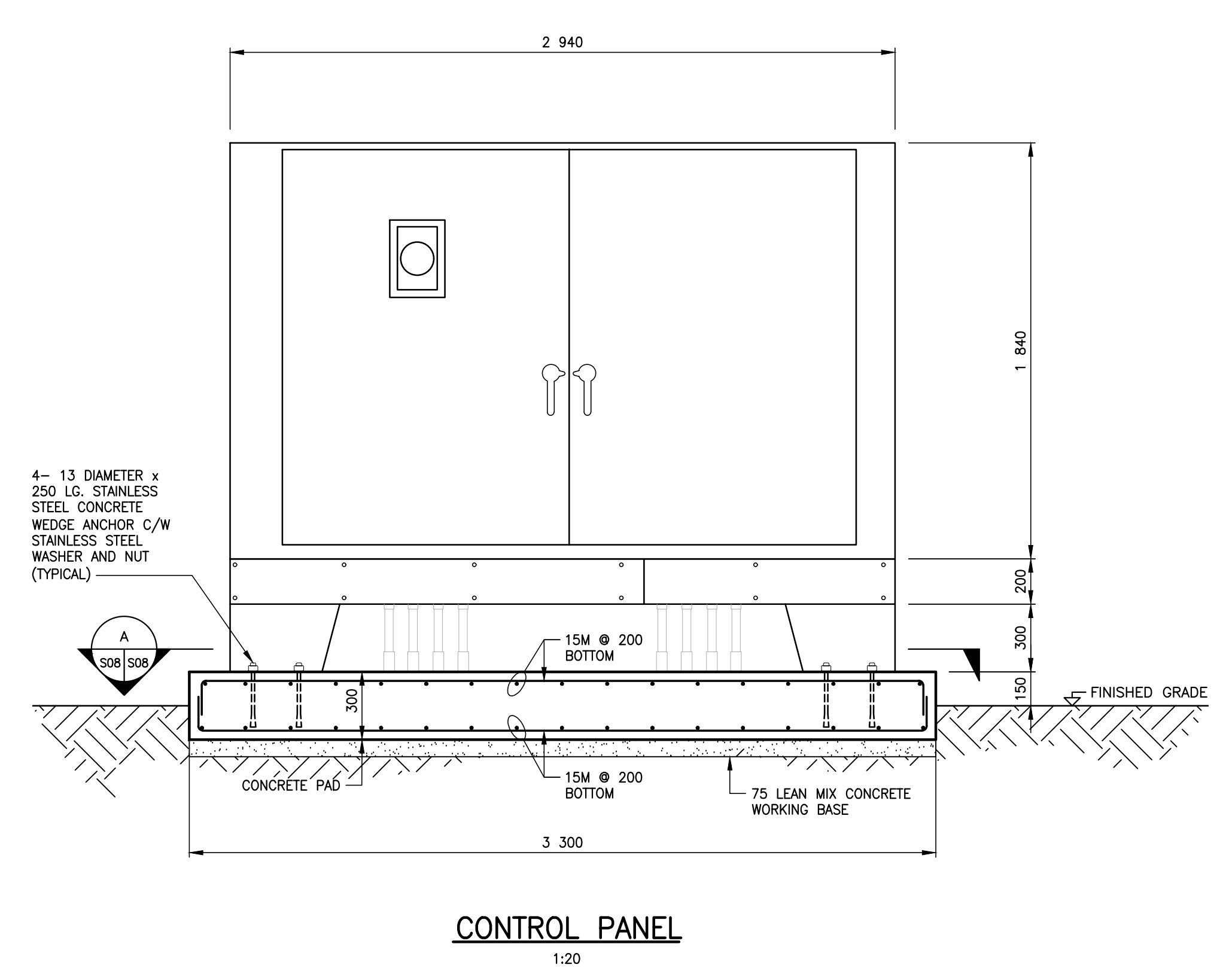
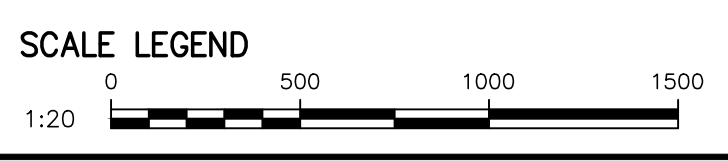


Sep 30, 2016 - 9:45am
 C:\Users\mmmm\Documents\Drawings\5516047 - Ruby & Aubrey Chamber Upgrades\MM\Drawings\5516047 - Ruby & Aubrey Chamber Upgrades - Job Control Panel detail



- NOTES:**
- SEE DRAWING No. S02 (CITY DWG. No. LD-7927, SHEET 6), DRAWING No. E01 (CITY DWG. No. LD-7934, SHEET 13) AND DRAWING No. E02 (CITY DWG. No. LD-7935, SHEET 14) FOR NOTES.
 - SEE DRAWING No. E01 (CITY DWG. No. LD-7934, SHEET 13) FOR ADDITIONAL CONTROL PANEL DETAILS.

NOTE:
 These design documents are prepared solely for the use by the party with whom the design professional has entered into a contract and there are no representations of any kind made by the design professional to any party with whom the design professional has not entered into a contract.



METRIC
 WHOLE NUMBERS INDICATE MILLIMETRES
 DECIMALIZED NUMBERS INDICATE METRES

APEGM
 Certificate of Authorization
MMM Group Limited
 No. 4531

G.E.M. ELEV.			
DESIGNED BY	BB/MRI	CHECKED BY	EH
DRAWN BY	KD	APPROVED BY	JPL
HOR. SCALE	AS NOTED	RELEASED FOR CONSTRUCTION	
VERTICAL SCALE	AS NOTED		
NO.	1	ISSUED FOR ADDENDUM 1	29/09/16 MRI
NO.		REVISIONS	DATE BY
			DATE 29/09/2016

MMM Group Limited
 Suite 111 - 93 Lombard Ave.
 Winnipeg, MB R3B 3B1
 t. 204.943.3178
 f. 204.943.4948
 www.mmm.ca

ENGINEER'S SEAL

 M. R. ISLAM
 Member 36041
 REGISTERED PROFESSIONAL ENGINEER

THE CITY OF WINNIPEG
 WATER AND WASTE DEPARTMENT

OUTFALL GATE CHAMBER UPGRADES
 RUBY STREET
 SRS OUTFALL GATE CHAMBER

CONTROL PANEL DETAIL
 FOUNDATION

CONSULTANT DRAWING NUMBER	5516047 - S08
SHEET OF	
CITY DRAWING NUMBER	LD-7956