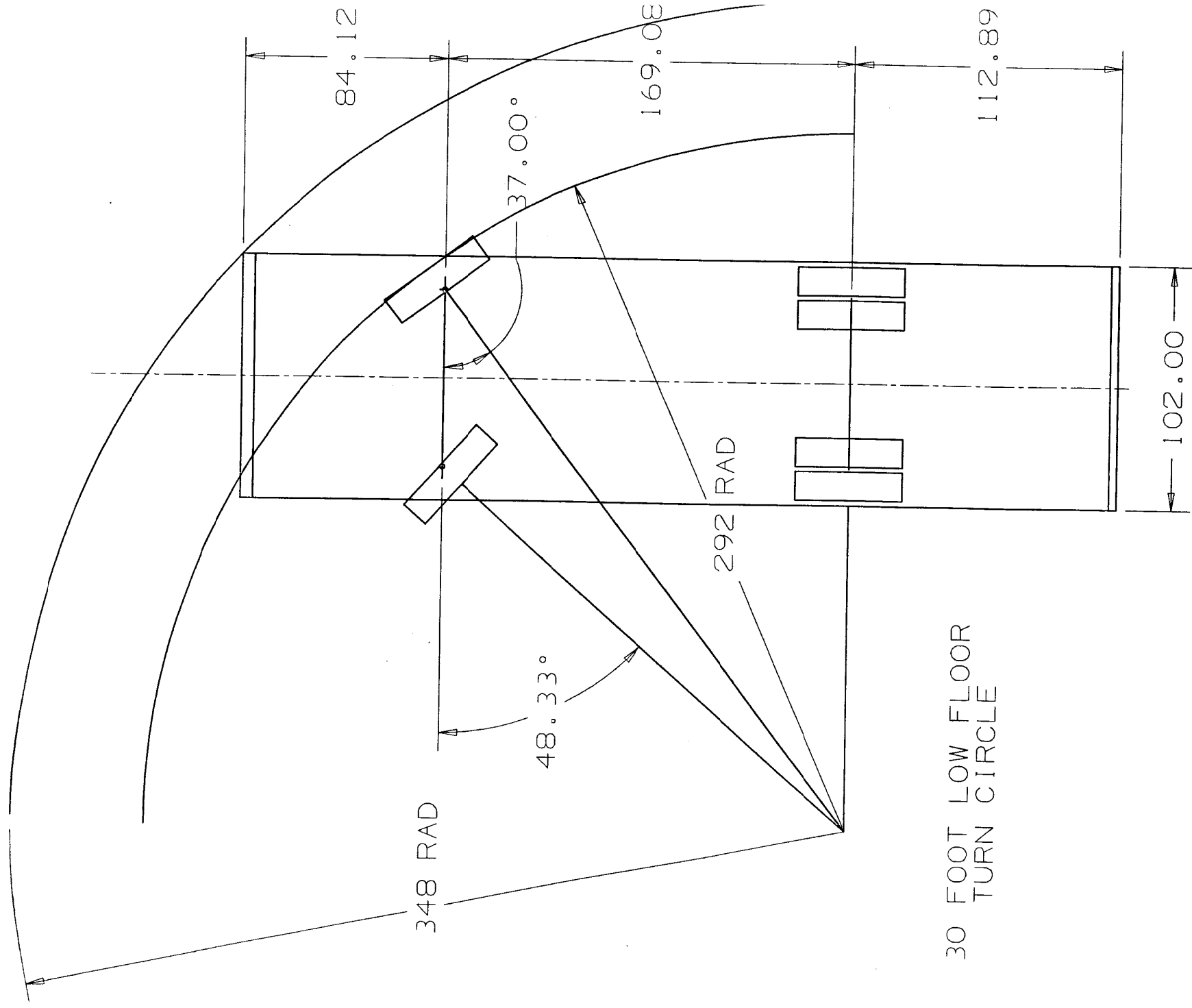


**Turning Envelope For Model D40**

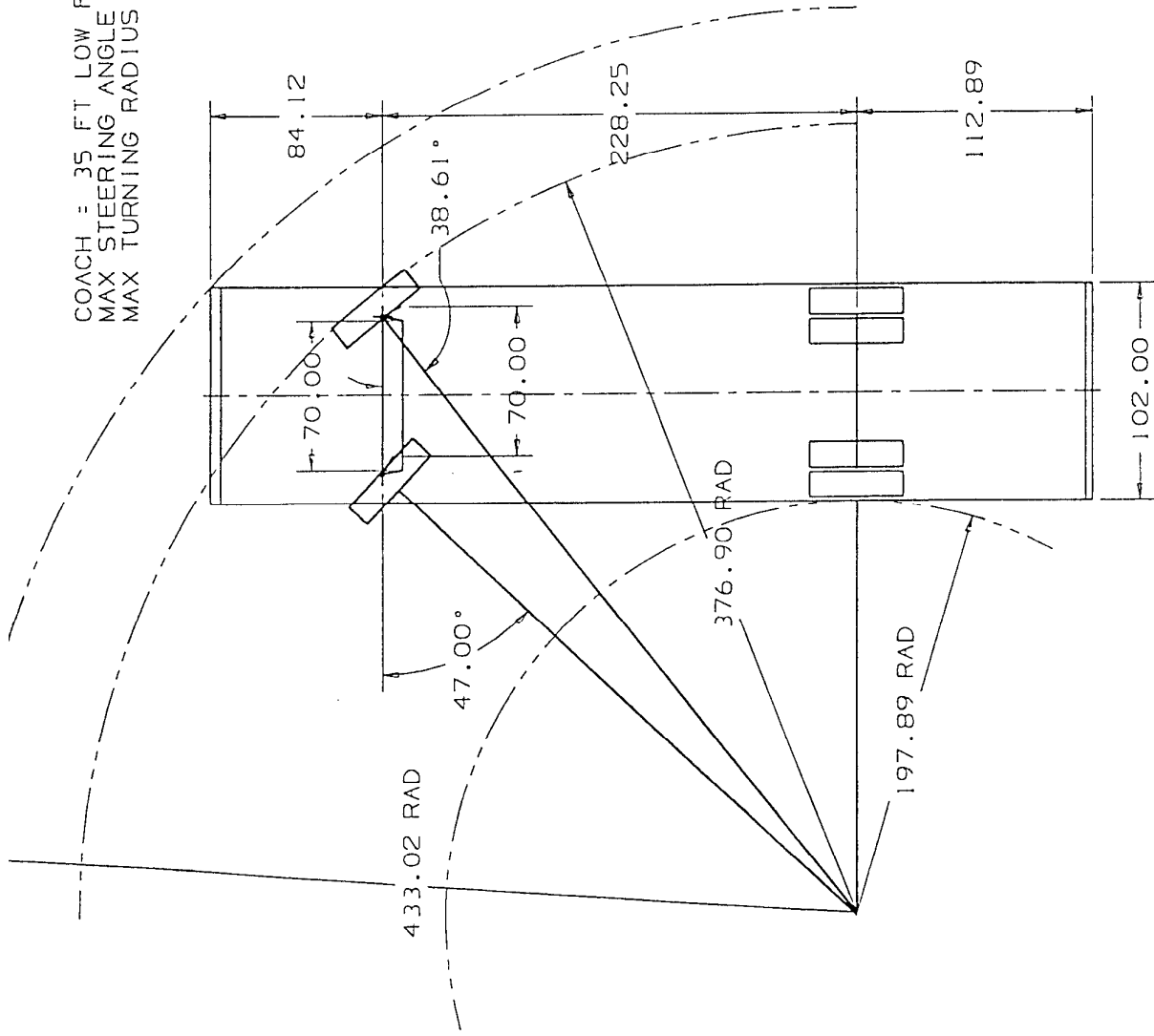
<b>Length (over bumpers)</b>	<b>60.7 ft. (18.5 m)</b>
<b>Width</b>	<b>8.5 ft. (2.6 m)</b>
<b>Height</b>	<b>9.2 ft. (2.8 m)</b>
<b>Wheelbase</b>	<b>25.5 ft. (7.8 m)</b>
<b>Turning Radius</b>	<b>42.5 ft. (12.9 m)</b>
<b>Pivot Angle</b>	<b>50°</b>

Length (over bumpers)	41 ft. (12.5 m)
Width	8.5 ft. (2.6 m)
Height	10.5 ft. (3.2 m)
Wheelbase	23.6 ft. (7.2 m)
Turning Radius	43 ft. (13.1 m)
Approach/Departure Angle	9°
Vehicle Weight (approx.)	27,600 lbs. (12,523 kg)
Gross Vehicle Weight Rating (GVWR)	43,640 lbs. (19,795 kg)

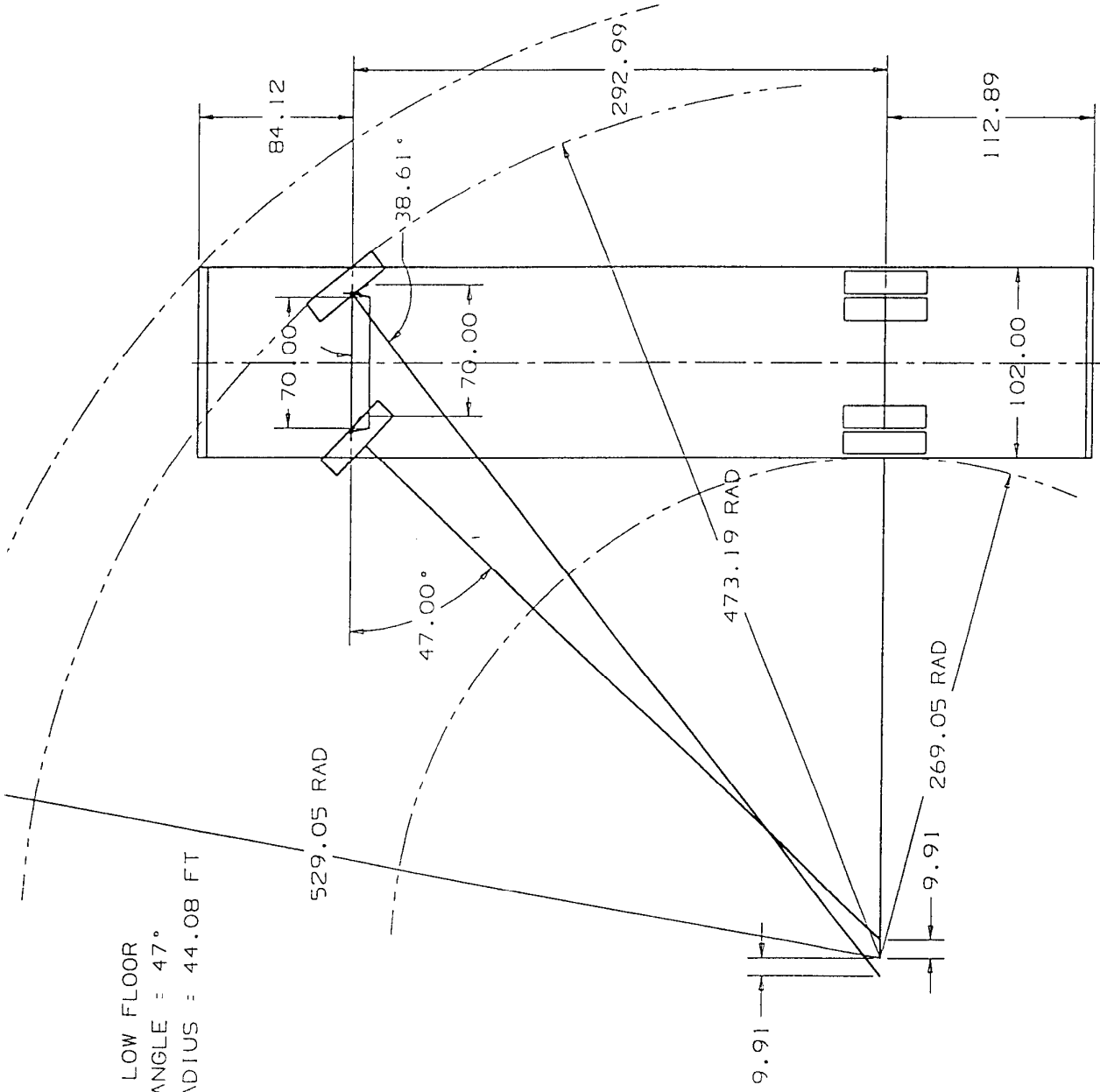


30 FOOT LOW FLOOR  
TURN CIRCLE

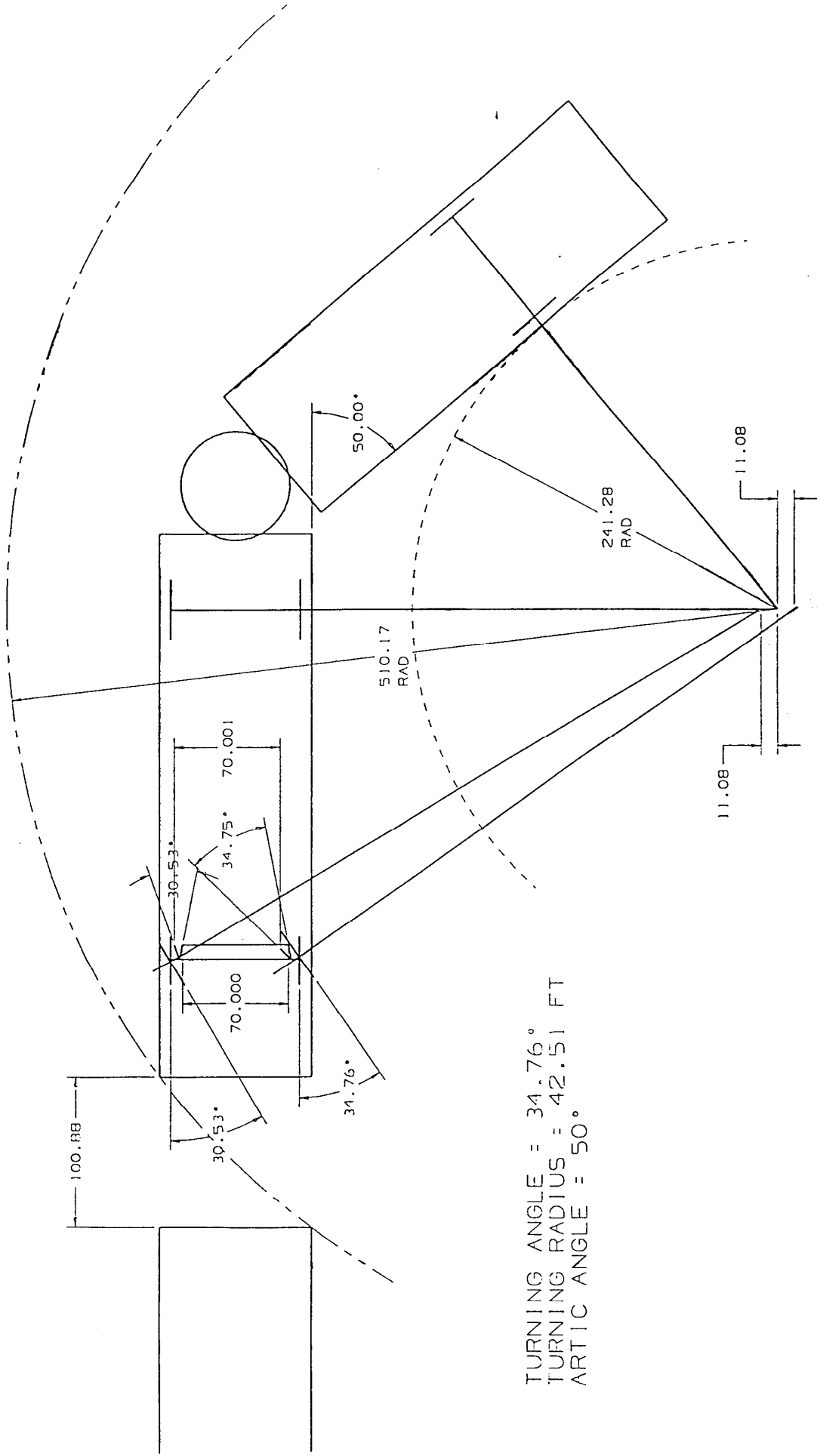
COACH = 35 FT LOW FLOOR  
MAX STEERING ANGLE = 47°  
MAX TURNING RADIUS = 36.09 FT



COACH = 40 FT LOW FLOOR  
 MAX STEERING ANGLE = 47°  
 MAX TURNING RADIUS = 44.08 FT

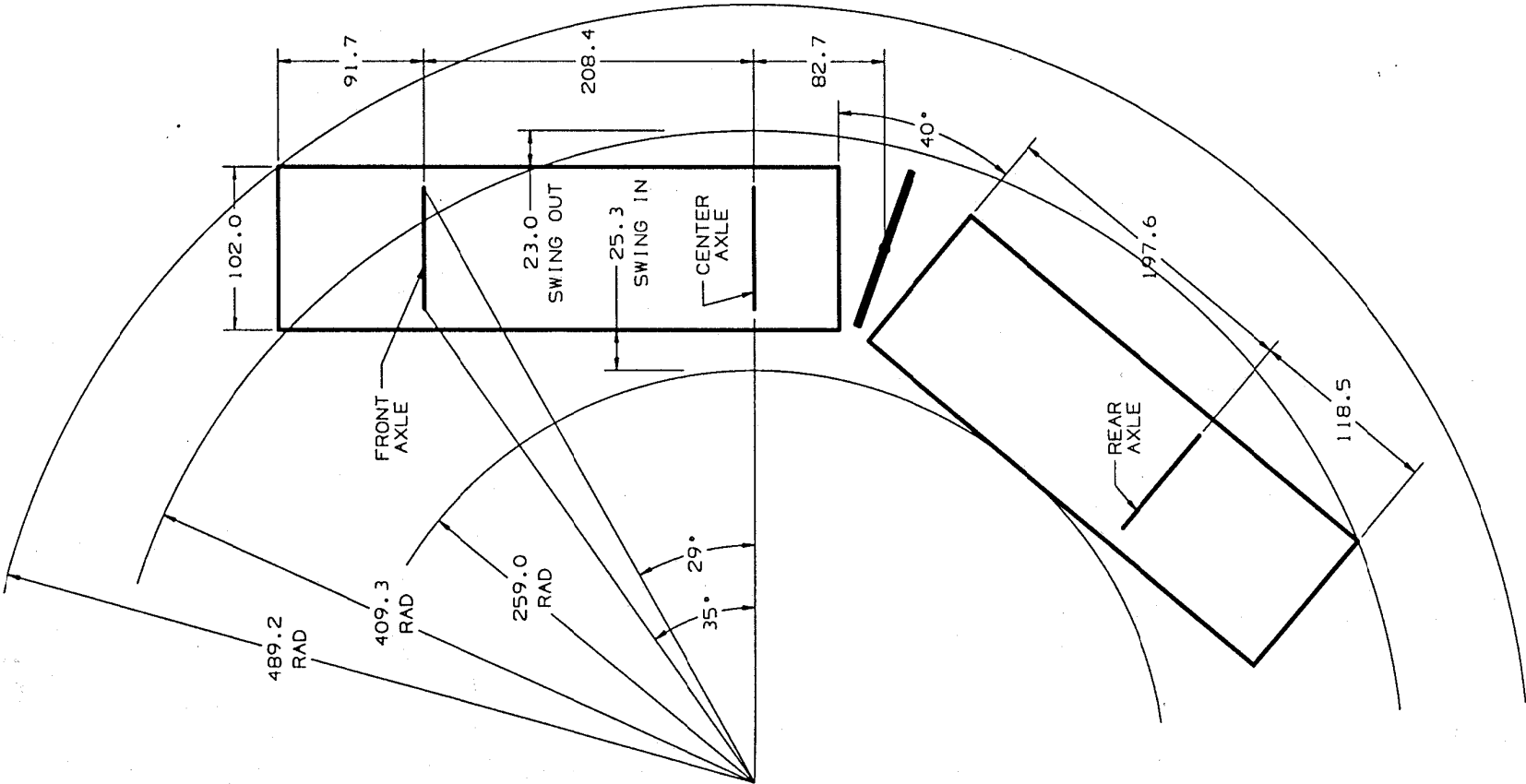


60 FT LOW FLOOR ARTIC



TURNING ANGLE = 34.76°  
TURNING RADIUS = 42.51 FT  
ARTIC ANGLE = 50°

TURNING ENVELOPE FOR THE  
NEW FLYER ARTIC AT THE  
MAXIMUM ANGLE OF 40°





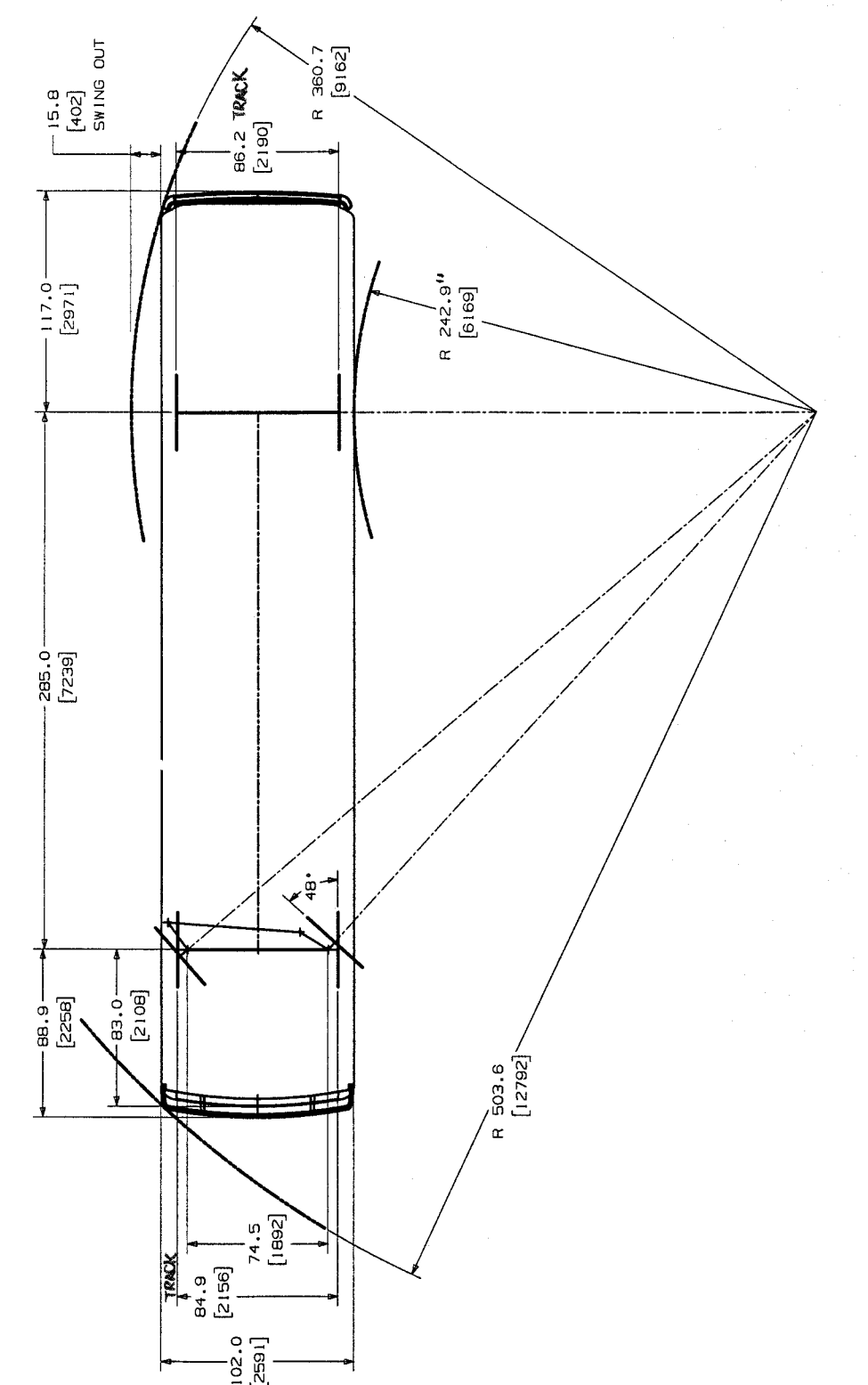
D C B A

NOTICE: THIS DRAWING IS A FACSIMILE OF THE ELECTRONIC MASTER. ALL REVISIONS MUST BE MADE IN WRITING. MANUAL REVISION IS NOT ALLOWED.

NOTE: FOR INSTALLATION DRAWINGS PLEASE REFER TO ATTACHED MFP FOM SHEET FOR PARTS LISTING

THIS DRAWING AND ITS SUBJECT MATTER ARE UNCLASSIFIED EXCEPT WHERE SHOWN OTHERWISE. THIS INFORMATION IS NOT TO BE DISCLOSED TO OTHERS WITHOUT WRITTEN CONSENT OF NEW FLYER INDUSTRIES LIMITED

2 3 4 5



MATERIAL			UNSPEC'D TOLS.			BY			TITLE		
WEIGHT			PER. IN. METRIC			DRAWN			INVERO-TURNING RADIUS		
TREATMENT			X XXX HOLE DIA. BEND RADII. TUBE BENDS & LENGTH TO HOSES 0 TO HOSES 20 L.B. PLUS			D. 31-AUG-99			PART N°		
			4.12 3.1 4.05 1.9 4.03 0.4 4.03 0.9 31 21			CHK'D ENG'R			INVERO		
			4.20 5.1 4.20 5.1			DO NOT SCALE DIMENSIONS IN ( ) ARE IN MP.M.			SCALE NTS		
			1X			THD ANGLE			C		
									SHEET 1 OF 2		
									REPORT ALL ERRORS TO ENG. DEPT.		

SYM	RELEASED TO PRODUCTION		DRAWN	CHK'D	ENG'R	ECO	DATE
	REVISION						

D C B A