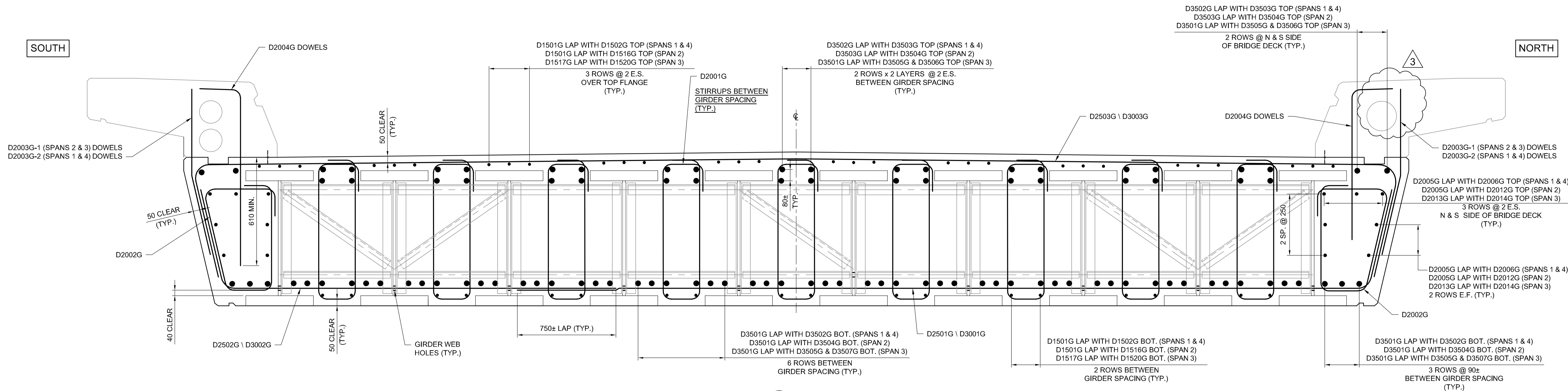
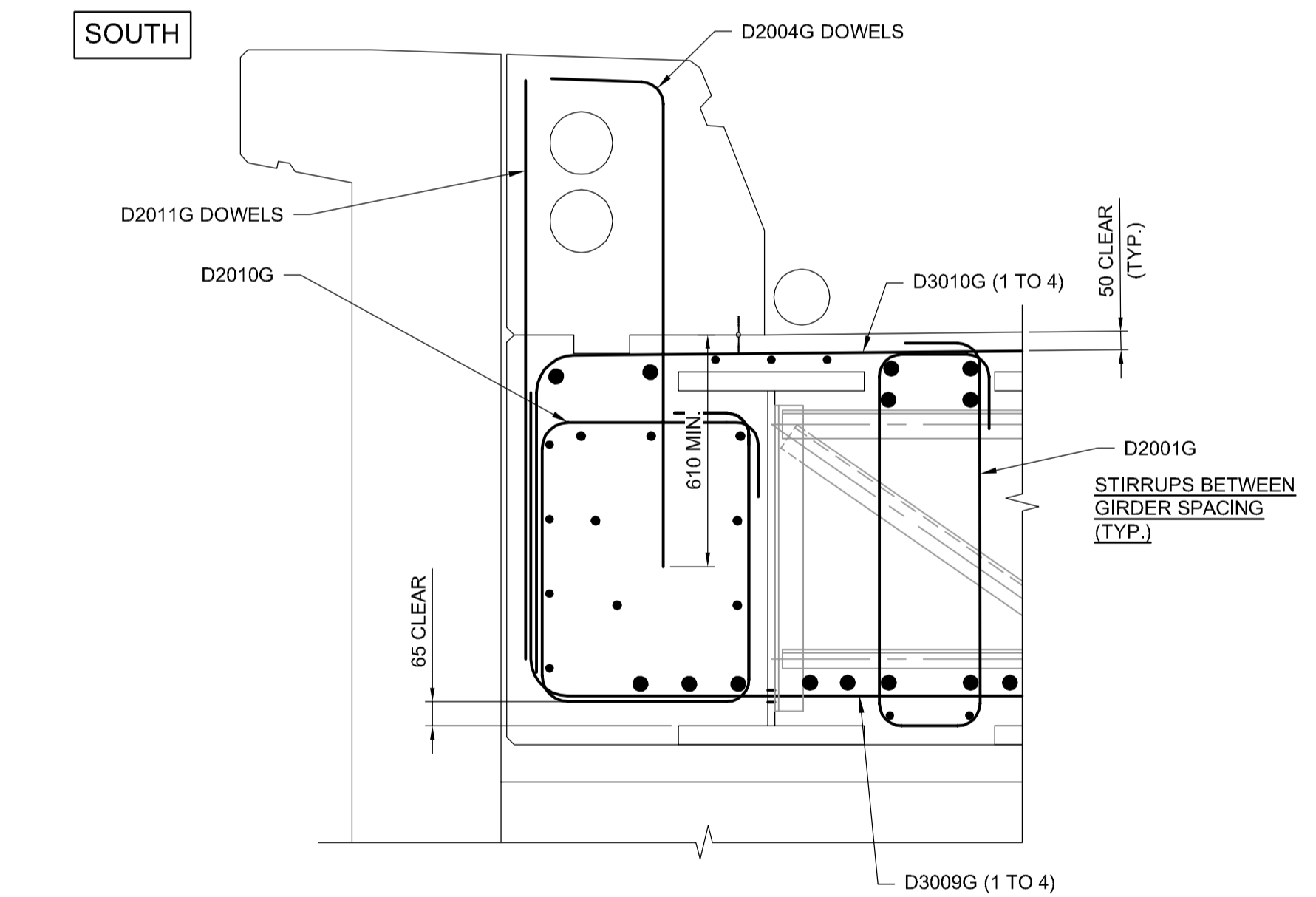


G:\CAD\163353\Technical Workspace\Engineering\Drawings and Figures\Structures\Contract\163353-C2-CON-CS-DECK SLAB REINFORCING 4.dwg

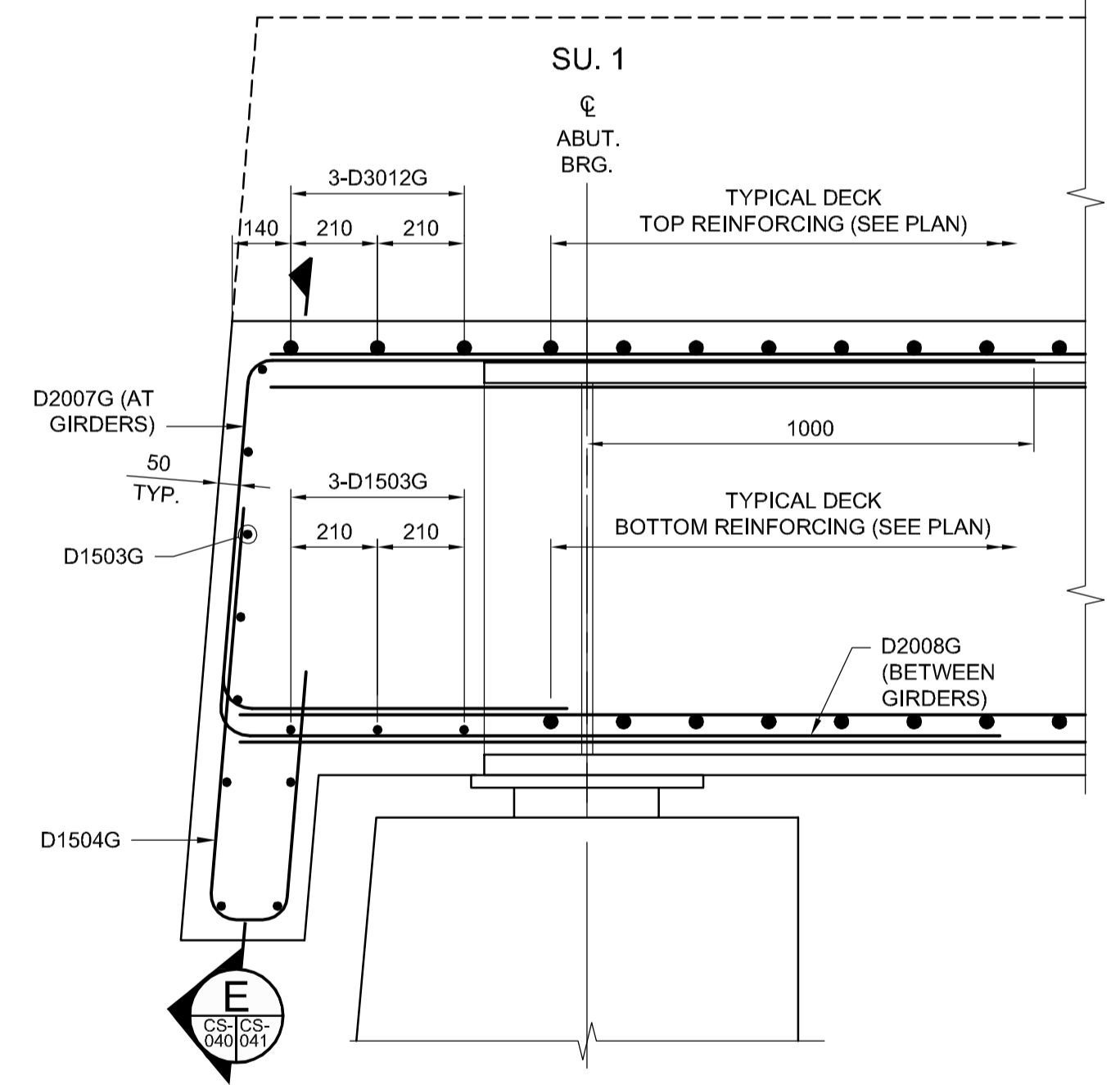


A SECTION
SCALE: 1:15

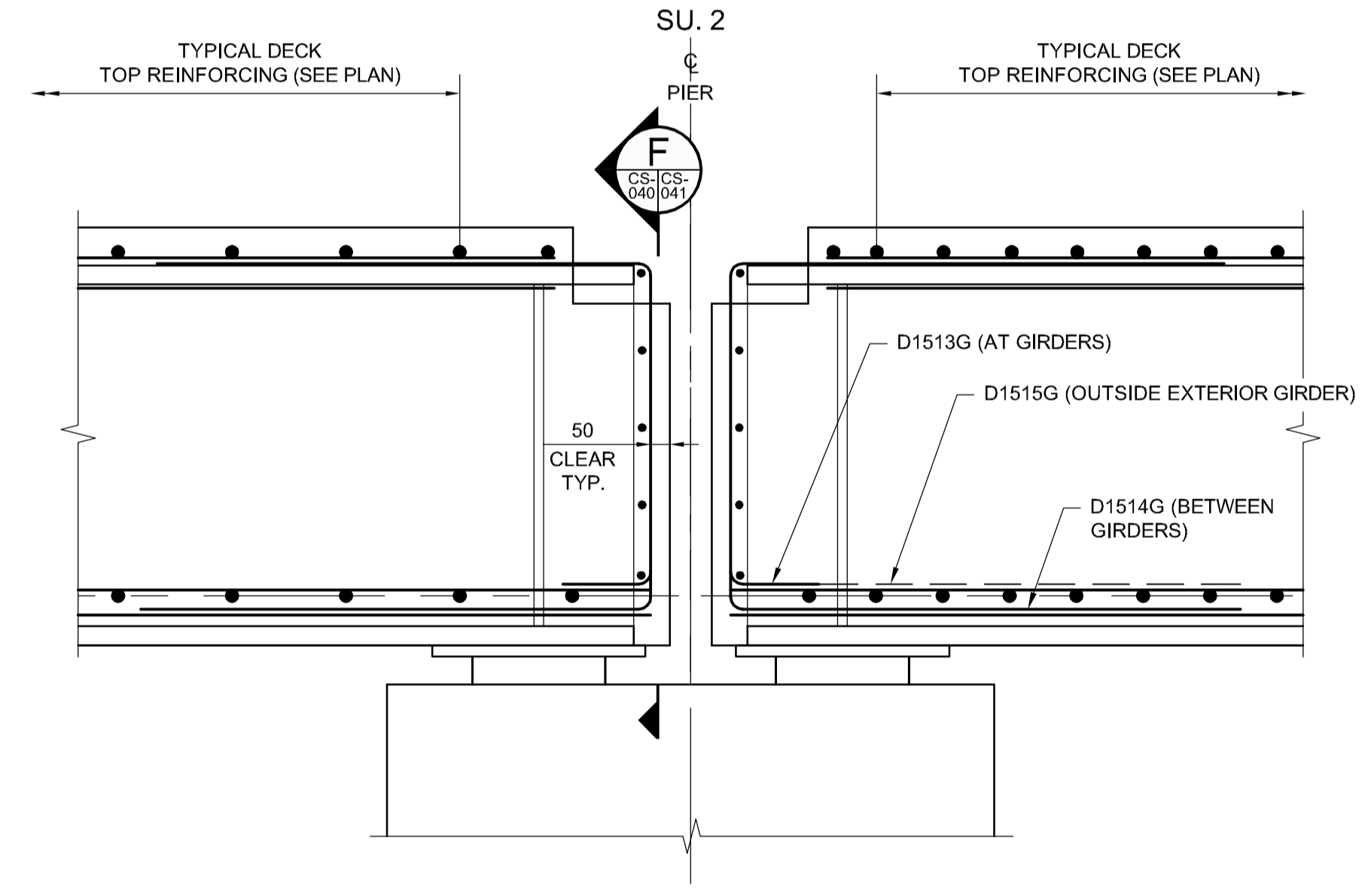
NOTE:
MAINTAIN STAGGERED SPLICING TOP AND BOTTOM THROUGH OUT REBAR INSTALLATION



B SECTION
SCALE: 1:15



C SECTION
SCALE: 1:15
AT GIRDER



D SECTION
SCALE: 1:15

ALL REINFORCING CHANGED TO GALVANIZED REINFORCING STEEL

- NOTES:**
- FOR REINFORCING STEEL NOTES REFER TO SHEET C2-CS-001.
 - REINFORCING STEEL WITH MARKS ENDING WITH "G" SHALL BE GALVANIZED REINFORCING.
 - FOR CONCRETE CLEAR COVER TO REINFORCEMENT REFER TO SHEET C2-CS-001.



NO.	REVISIONS	DATE	BY	DATE
3	ADDENDUM #5	17/03/01	RE	
2	ADDENDUM #4	17/02/24	RE	
1	ADDENDUM #1	17/01/25	RE	
0	ISSUED FOR TENDER	17/01/09	RE	

DESIGNED BY	CHECKED BY	DRAWN BY	APPROVED BY	HOR. SCALE	VERTICAL
RE	SSR	NBG/CCG	DBW	AS SHOWN	AS SHOWN

ENGINEER'S SEAL
PROVINCE OF MANITOBA
R.B. ERIC
Member 22665
REGISTERED PROFESSIONAL ENGINEER
CONSULTANT PROJECT NUMBER
16-3353

THE CITY OF WINNIPEG
PUBLIC WORKS DEPARTMENT
Waverley Street Underpass at CN Mile 3.89 Rivers Sub
Contract 2: Underpass Structure, Railworks,
Roadworks, Land Drainage Sewer, Pumping Station
and Landscaping Works
CITY DRAWING NUMBER
U-239-2016-C2-CS-040
SHEET **040** OF **085**
CONSULTANT DRAWING NUMBER
C2-CS-040