

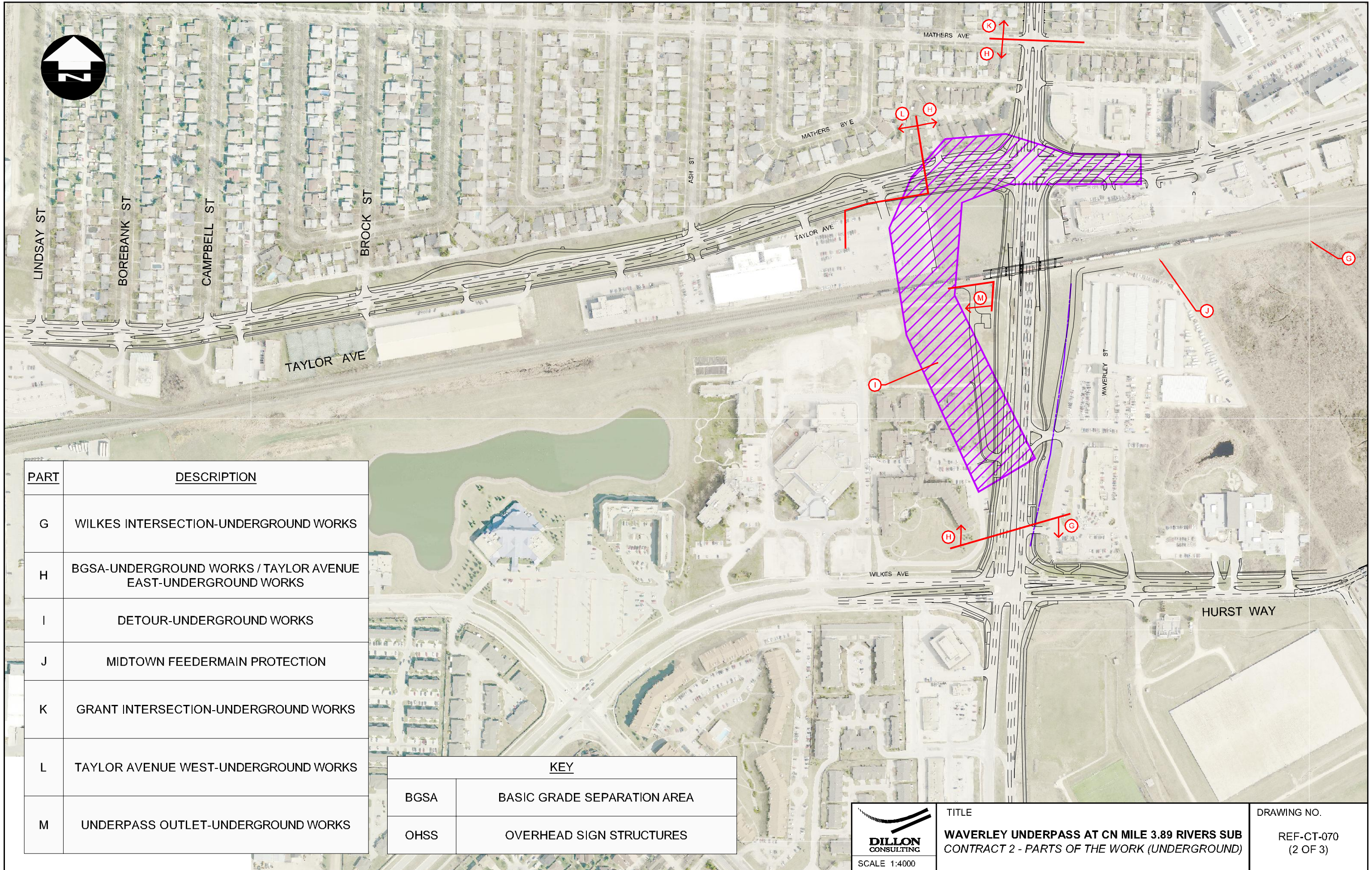
| PART | DESCRIPTION                       |
|------|-----------------------------------|
| A    | WILKES INTERSECTION-SURFACE WORKS |
| B    | BGSA-SURFACE WORKS                |
| C    | DETOUR-SURFACE WORKS              |
| D    | 1360 TAYLOR AVE-SURFACE WORKS     |
| E    | GRANT INTERSECTION-SURFACE WORKS  |
| F    | TAYLOR AVENUE WEST-SURFACE WORKS  |

| KEY  |                             |
|------|-----------------------------|
| BGSA | BASIC GRADE SEPARATION AREA |
| OHSS | OVERHEAD SIGN STRUCTURES    |



TITLE  
**WAVERLEY UNDERPASS AT CN MILE 3.89 RIVERS SUB**  
 CONTRACT 2 - PARTS OF THE WORK (SURFACE)

DRAWING NO.  
 REF-CT-070  
 (1 OF 3)



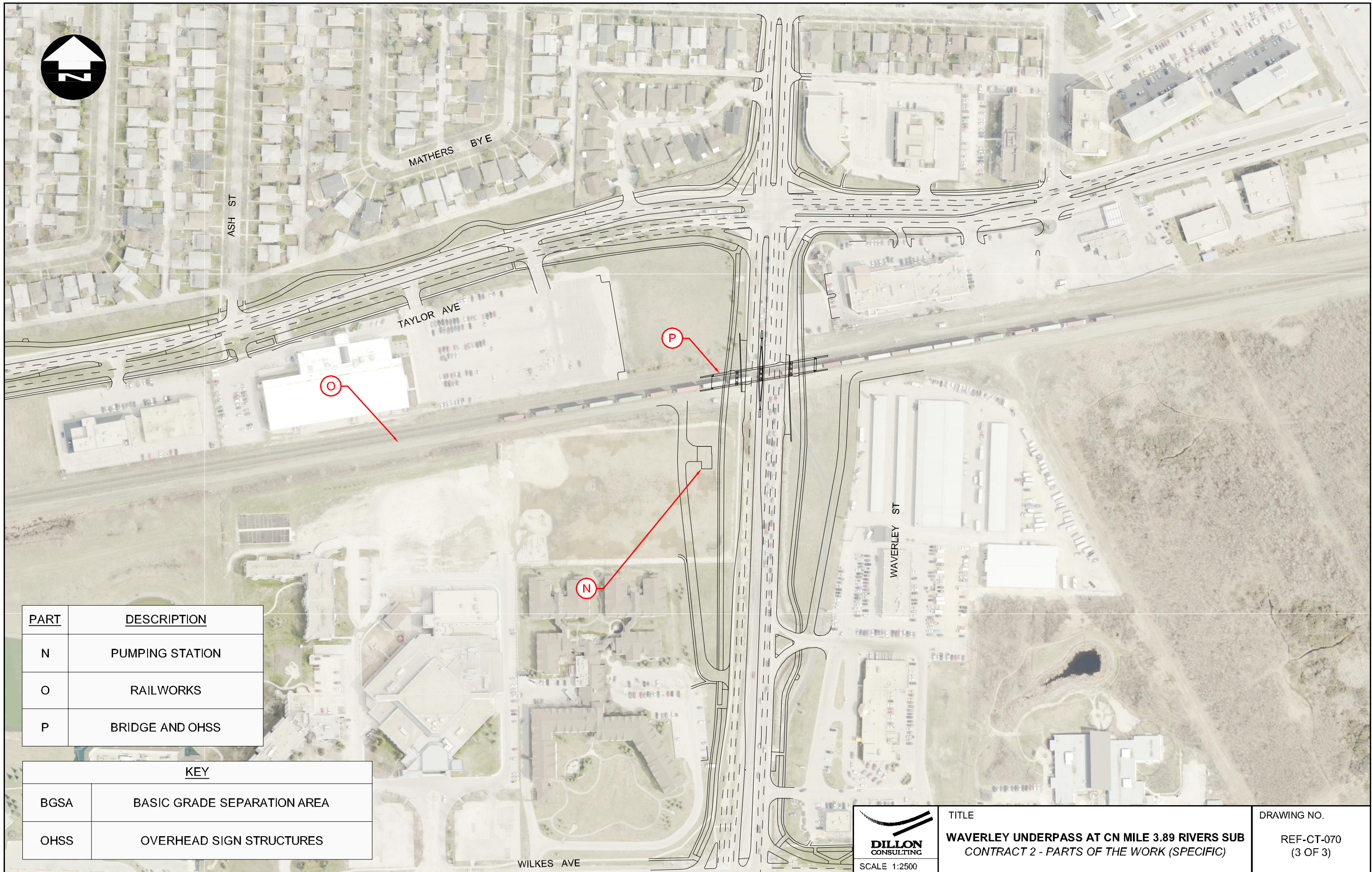
| PART | DESCRIPTION   |
|------|---|
| G    | WILKES INTERSECTION-UNDERGROUND WORKS                         |
| H    | BGSA-UNDERGROUND WORKS / TAYLOR AVENUE EAST-UNDERGROUND WORKS |
| I    | DETOUR-UNDERGROUND WORKS                                      |
| J    | MIDTOWN FEEDERMAIN PROTECTION                                 |
| K    | GRANT INTERSECTION-UNDERGROUND WORKS                          |
| L    | TAYLOR AVENUE WEST-UNDERGROUND WORKS                          |
| M    | UNDERPASS OUTLET-UNDERGROUND WORKS                            |

| KEY  |                             |
|------|-----------------------------|
| BGSA | BASIC GRADE SEPARATION AREA |
| OHSS | OVERHEAD SIGN STRUCTURES    |



TITLE  
**WAVERLEY UNDERPASS AT CN MILE 3.89 RIVERS SUB  
 CONTRACT 2 - PARTS OF THE WORK (UNDERGROUND)**

DRAWING NO.  
 REF-CT-070  
 (2 OF 3)



| PART | DESCRIPTION     |
|------|-----------------|
| N    | PUMPING STATION |
| O    | RAILWORKS       |
| P    | BRIDGE AND OHSS |

| KEY  |                             |
|------|-----------------------------|
| BGSA | BASIC GRADE SEPARATION AREA |
| OHSS | OVERHEAD SIGN STRUCTURES    |



TITLE  
**WAVERLEY UNDERPASS AT CN MILE 3.89 RIVERS SUB**  
 CONTRACT 2 - PARTS OF THE WORK (SPECIFIC)

DRAWING NO.  
 REF-CT-070  
 (3 OF 3)