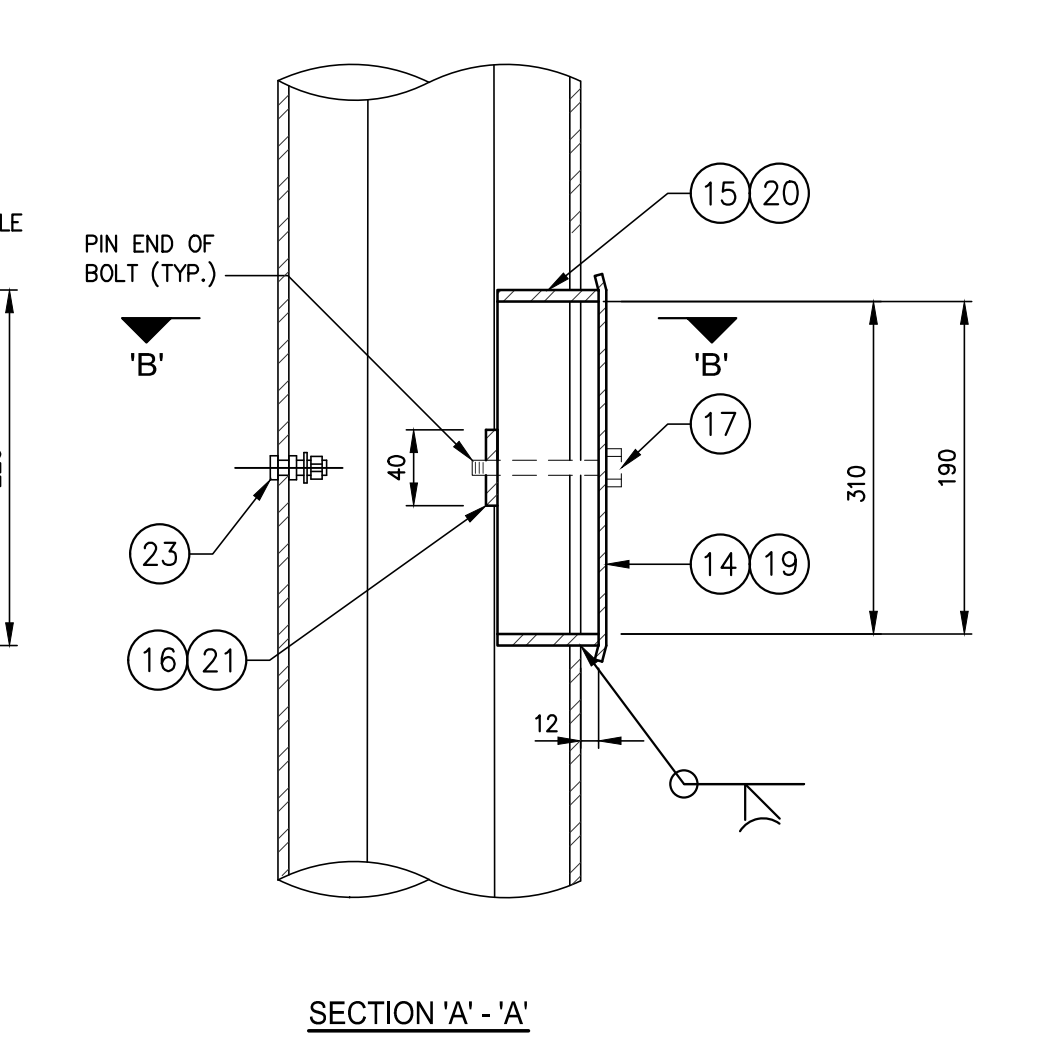
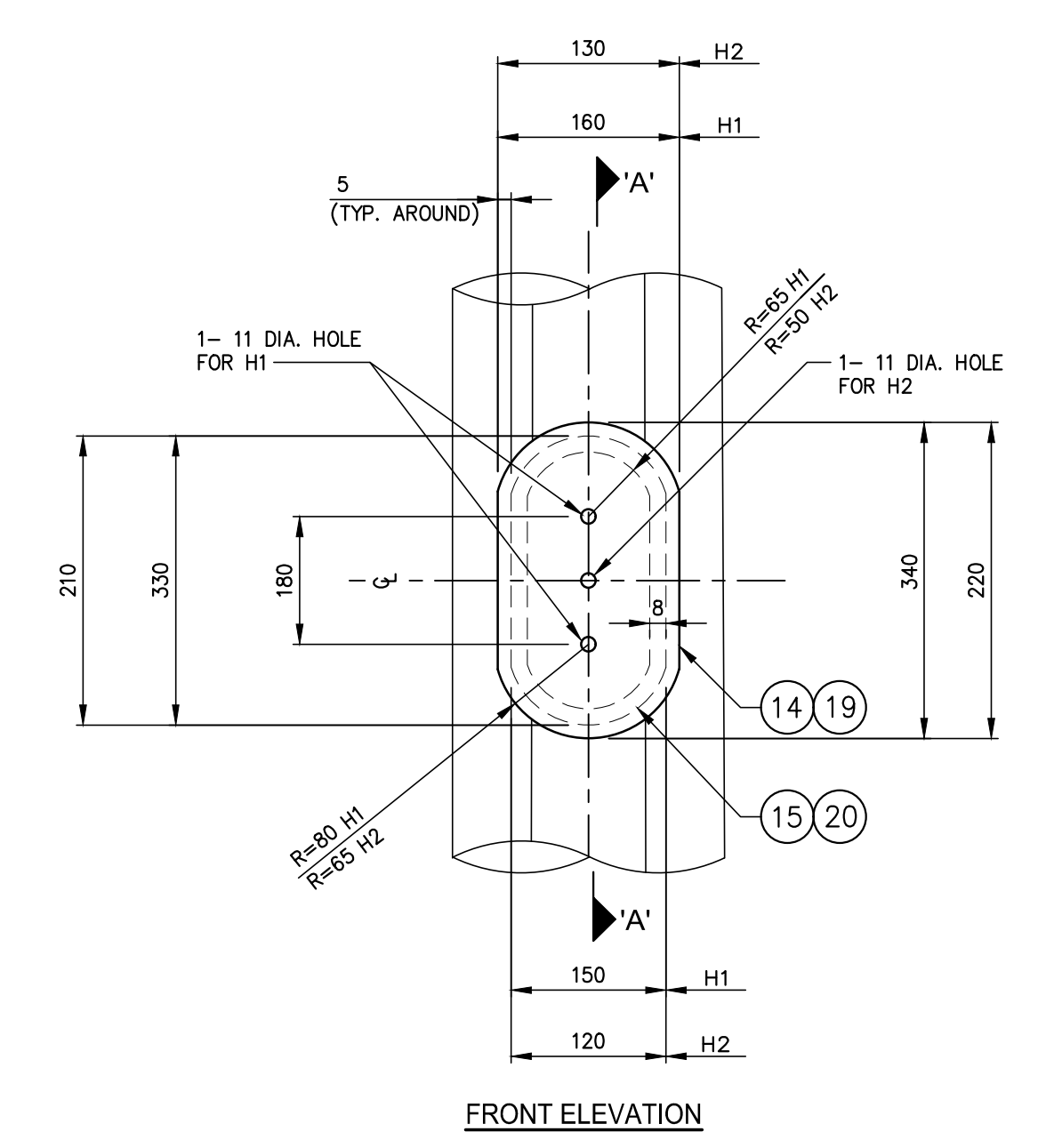
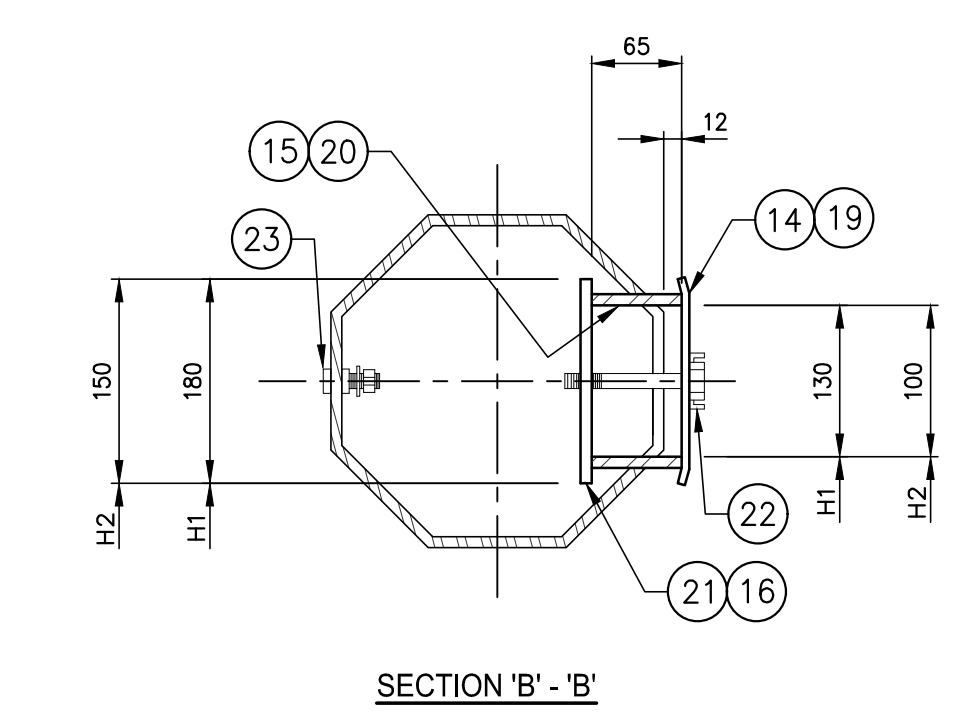
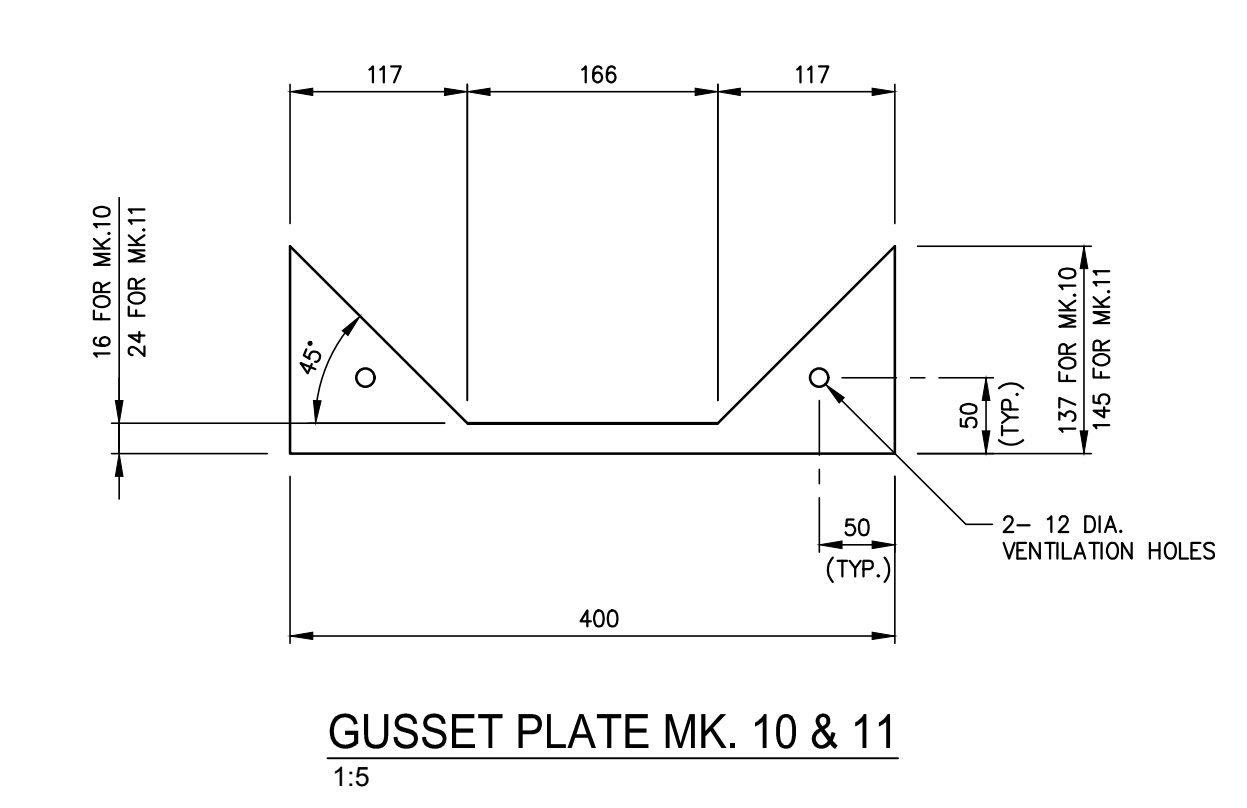
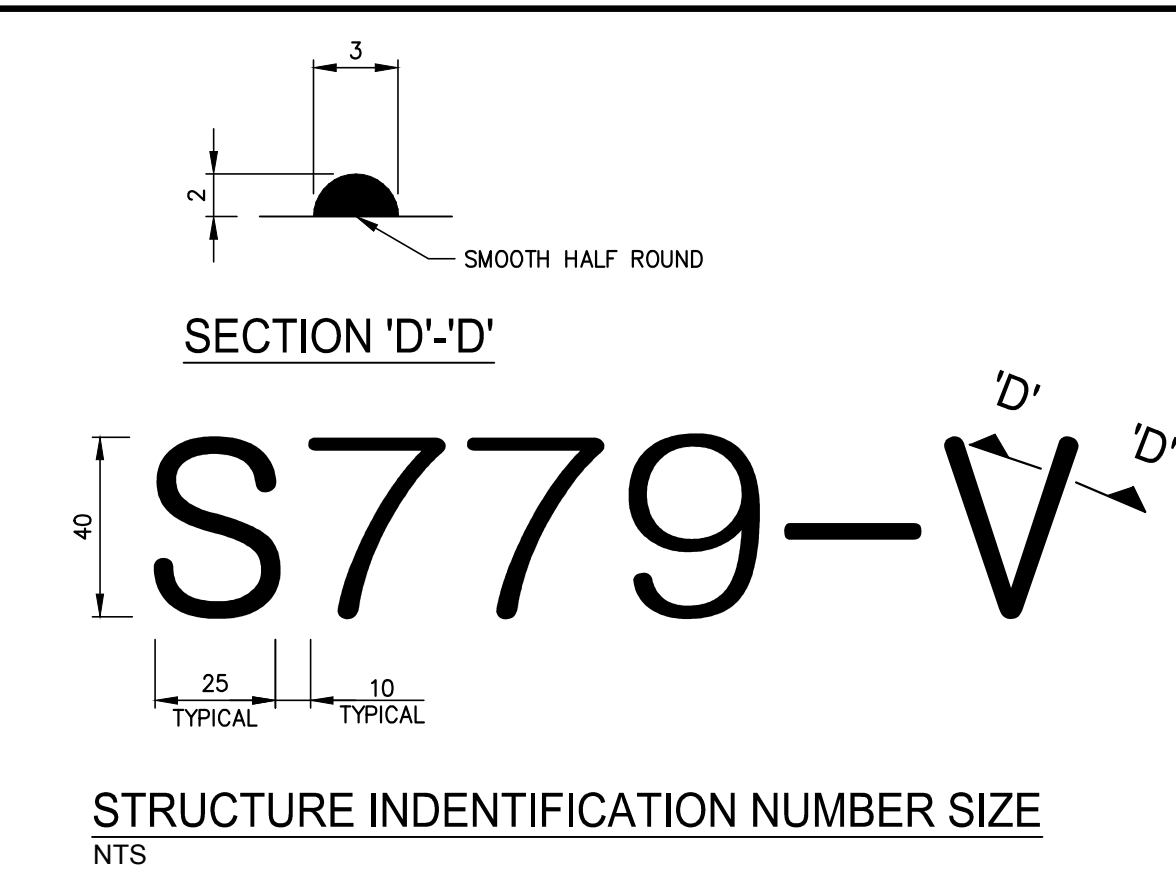


BILL OF MATERIALS		
MK.	QTY.	DESCRIPTION
1	1	OCTAGONAL SHAFT 400 A/F x 9.525
2	1	OCTAGONAL ARM 350 A/F TO 200 A/F x 9.525
3	1	BASE PLATE 50 THICK (GR. 300W)
4	1	BACKUP STRIP 6 x 40 (FOR SHAFT)
5	1	BACKUP STRIP 6 x 40 (FOR ARM)
6	1	END PLATE 250 A/F OCTAGONAL x 6 THICK C/W 10 DIA. HOLE FOR VENTING
7	16	22 DIA. A325 BOLTS GALV. C/W NUT & WASHER, LENGTH TO SUIT
8	2	FLANGE PLATE 752 x 480 x 38 (GR.300W)
9	2	SIDE GUSSET PLATE 20 x 500 x 300
10	1	TOP GUSSET PLATE 10 THICK C/W 10 DIA. HOLE FOR VENTING
11	16	BOTTOM GUSSET PLATE 10 THICK
12	1	COVER PLATE 420 DIA. x 10 THICK C/W 10 DIA. HOLE FOR VENTING
13	2	OCTAGONAL INTERIOR GUSSET PLATE 8 THICK
HANDHOLE MARK H1 (1 REQUIRED)		
14	1	COVER PLATE 11 GA. x 160 x 340 (ASTM A569)
15	1	REINFORCING RING 8 x 65 x 830
16	2	CLAMP BAR 6 x 40 x 180
17	2	10 DIA. x 140 BOLT S/S (TYPE 316)
18	1	GROUND STUD ASSEMBLY 10 DIA. x 40 (STAINLESS STEEL)
HANDHOLE MARK H2 (1 REQUIRED)		
19	1	COVER PLATE 11 GA. x 130 x 220 (ASTM A569)
20	1	REINFORCING RING 8 x 65 x 555
21	1	CLAMP BAR 6 x 40 x 150
22	2	10 DIA. x 140 BOLT S/S (TYPE 316)
23	1	GROUND STUD ASSEMBLY 10 DIA. x 40 (STAINLESS STEEL)

- NOTES**
- MK. 16 & 21 CLAMP BARS C/W TAPPED HOLE IN CENTRE FOR MK. 17 & 22 BOLT. RE-TAP AFTER GALVANIZING.
 - MK. 17 AND 22 BOLTS C/W TAMPER PROOF ALUMINUM CAP WASHER.
 - MK. 18 AND 23 GROUND STUD ASSEMBLY C/W HEW NUT, 2 TERMINAL WASHERS AND 1 LOCK WASHER (ALL STAINLESS STEEL).
- GENERAL NOTES**
- "RAISED" IDENTIFICATION NO. WITH WELDING ELECTRODE PROVIDED FOR THE SIGN STRUCTURE.
 - ALL SHARP POINTS AND EDGES GROUND.



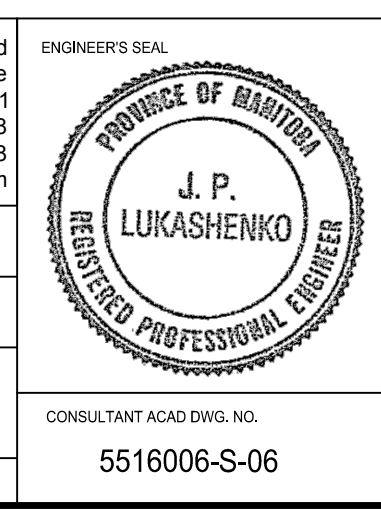
HANDHOLE MK. 'H1' & 'H2'
1:10

May 26, 2016 - 11:36am
 P:\2516006-5516006- Pembina Hwy Powerplant, Roads & Blue Lane\MM\Drawings\Overhead Structures\5516006_Pembina Hwy Oh sign_S01-506.dwg - tab.S-06

NOTE:
These design documents are prepared solely for the use by the party with whom the design professional has entered into a contract and there are no representations of any kind made by the design professional to any party with whom the design professional has not entered into a contract.

LOCATIONS APPROVED UNDERGROUND STRUCTURES				BENCHMARK LOCATION LOCATED ON "O" OF OPEN ON HYDRANT, SOUTHEAST CORNER OF PEMBINA HIGHWAY AND DALY STREET NORTH			
SIGNED BY:	DATE	NO.	REVISIONS	DATE	BY	DATE	BY
5	ADDENDUM 2	27.MAY.16	VM				
4	ADDENDUM 1	26.MAY.16	VM				
3	ISSUED FOR TENDER	16.MAY.16	VM				
2	ISSUED TO UNDERGROUND STRUCTURES	16.MAY.16	VM				
1	ISSUED FOR CLIENT REVIEW	28.APR.16	VM				

DESIGNED BY	MGM	CHECKED BY	TR/EH
DRAWN BY	KD	APPROVED BY	JPL
HOR. SCALE	AS NOTED	RELEASED FOR CONSTRUCTION	
VERTICAL	AS NOTED		
DATE	MAY 16 2016	DATE	



THE CITY OF WINNIPEG
 PUBLIC WORKS DEPARTMENT
 ENGINEERING DIVISION

PEMBINA HIGHWAY
 FROM CARTER AVENUE TO OSBORNE STREET

OVERHEAD SIGN STRUCTURES
 S779 - FABRICATION DETAILS (2 OF 2)

CITY DRAWING NUMBER
 SHEET 27 OF 27

BID NO.
 386-2016

CONSULTANT ACAD DWG. NO.
 5516006-S-06

