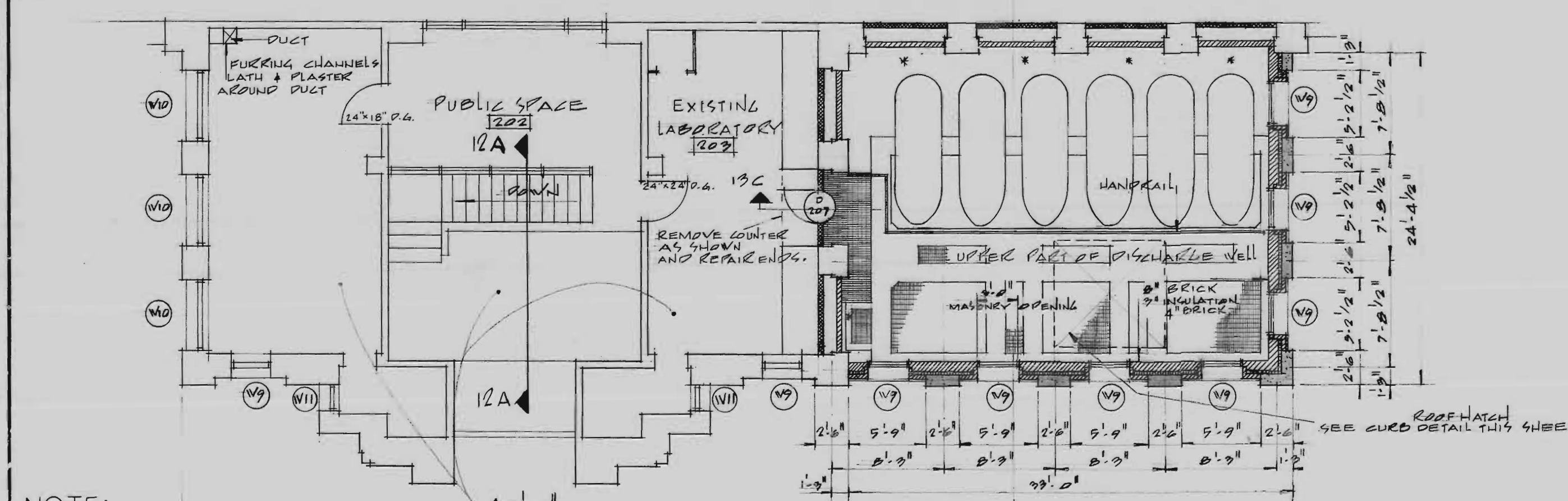


13B ← \* SEE NOTE BELOW

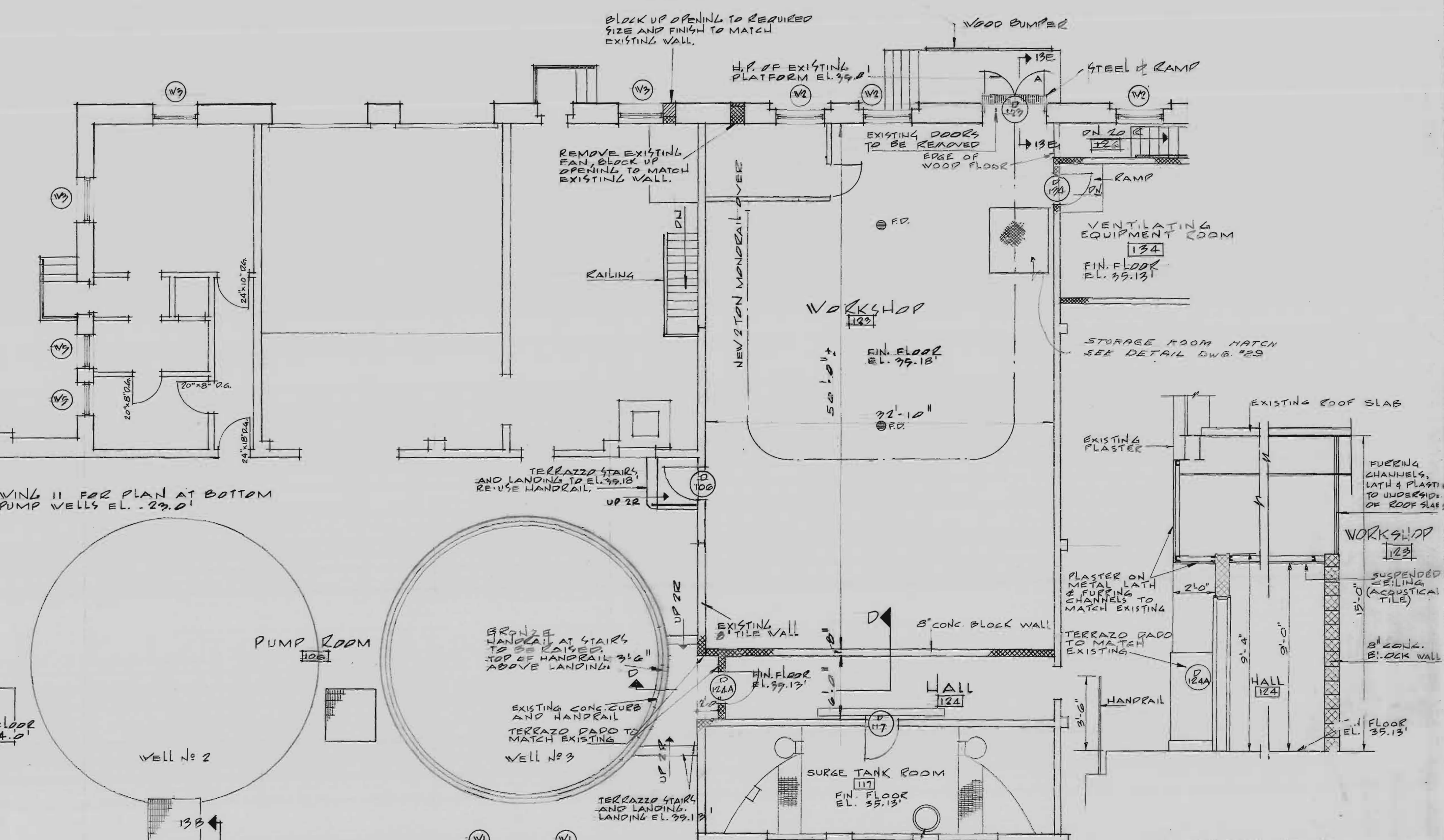


SECTION  
SCALE 1/2" = 1'-0"



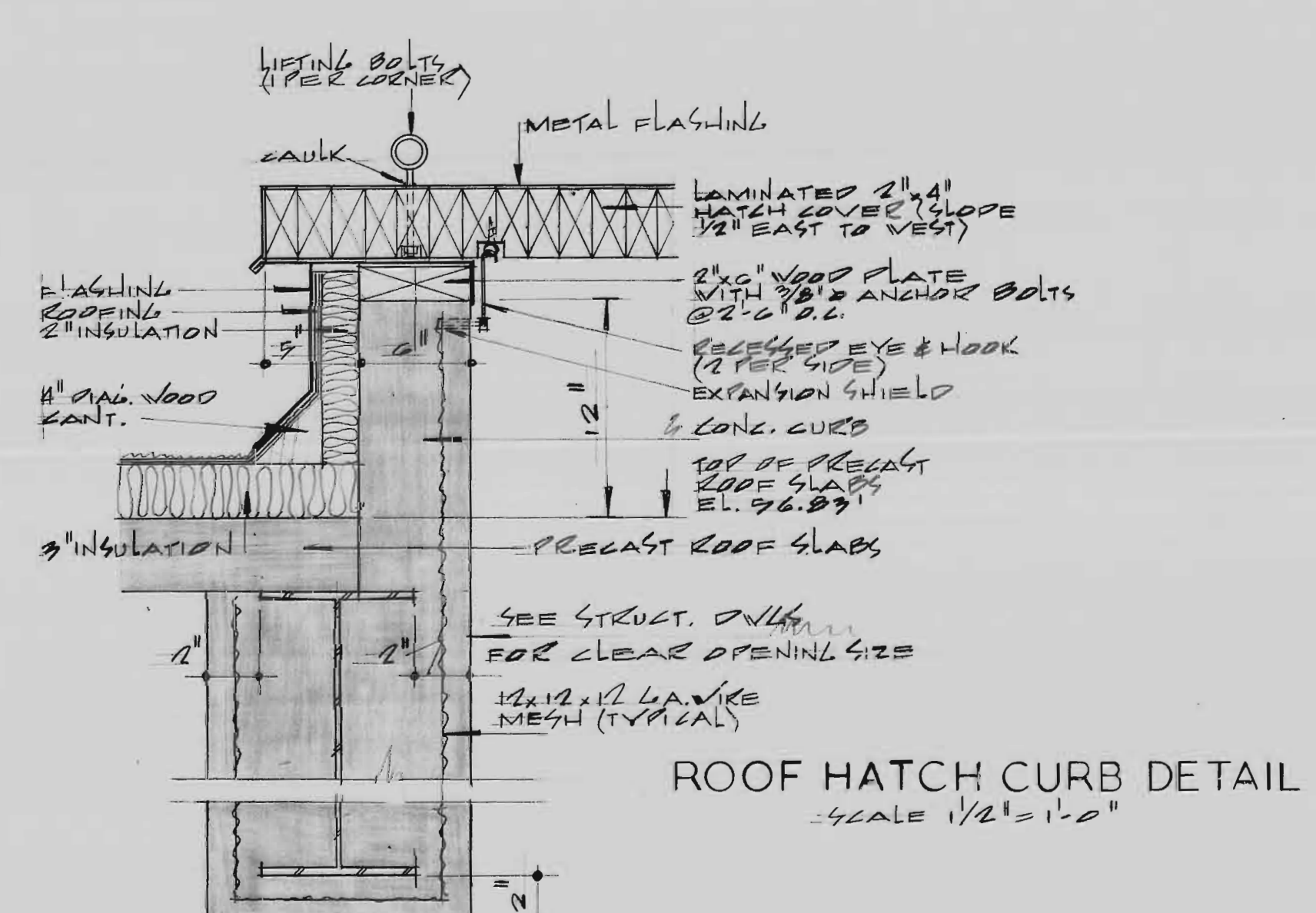
NOTE:  
FOR ADDITIONAL ALTERATIONS TO THIS AREA SEE DETAIL DWG. \* 20 (M.P. 880, M.P. 212)

PART PLAN ABOVE EL. 44.5'  
SCALE 1/2" = 1'-0"



SECTION D-D  
1/2" = 1'-0"

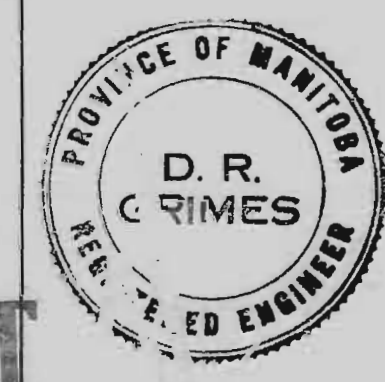
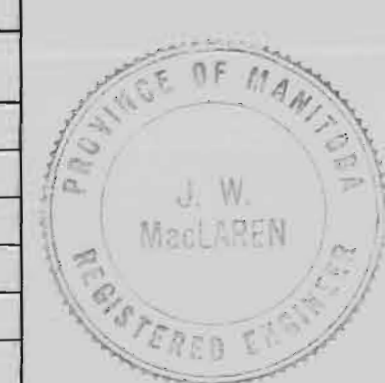
SOUTHERN PART PLAN ABOVE EL. 34.0'  
SCALE 1/2" = 1'-0"



ROOF HATCH CURB DETAIL  
SCALE 1/2" = 1'-0"

\* REMOVE SASH AND FRAMES, BRICK UP ON EXTERIOR TO MATCH EXISTING 4" CONG. BLOCK WITH FINISH OVER TO MATCH INTERIOR WALLS.

REVISIONS		
No.	DATE	DETAIL



AUG 1966  
**AS BUILT**

FOR ACTUAL ELEV. SUBTRACT 0.37 FT.

THE METROPOLITAN CORPORATION OF GREATER WINNIPEG  
WATERWORKS AND WASTE DISPOSAL DIVISION

**NORTH END SEWAGE TREATMENT PLANT**

**CONTRACT A - MAIN BUILDING SUPERSTRUCTURE - GROUND FLOOR PLAN, SHEET I**

APPROVED: *James F. MacLaren*  
ENGINEER OF DESIGN

APPROVED: *A. Penman*  
ENGINEER OF WASTE DISPOSAL

DATE: MARCH 11, 1967  
W.L. WARDROP ASSO' ATEN (MANAGEMENT) LTD. ENGINEERING CONSULTANTS V 412EG

I.W.G. No. 10  
17  
217

**NEP-10**

NEP-0010