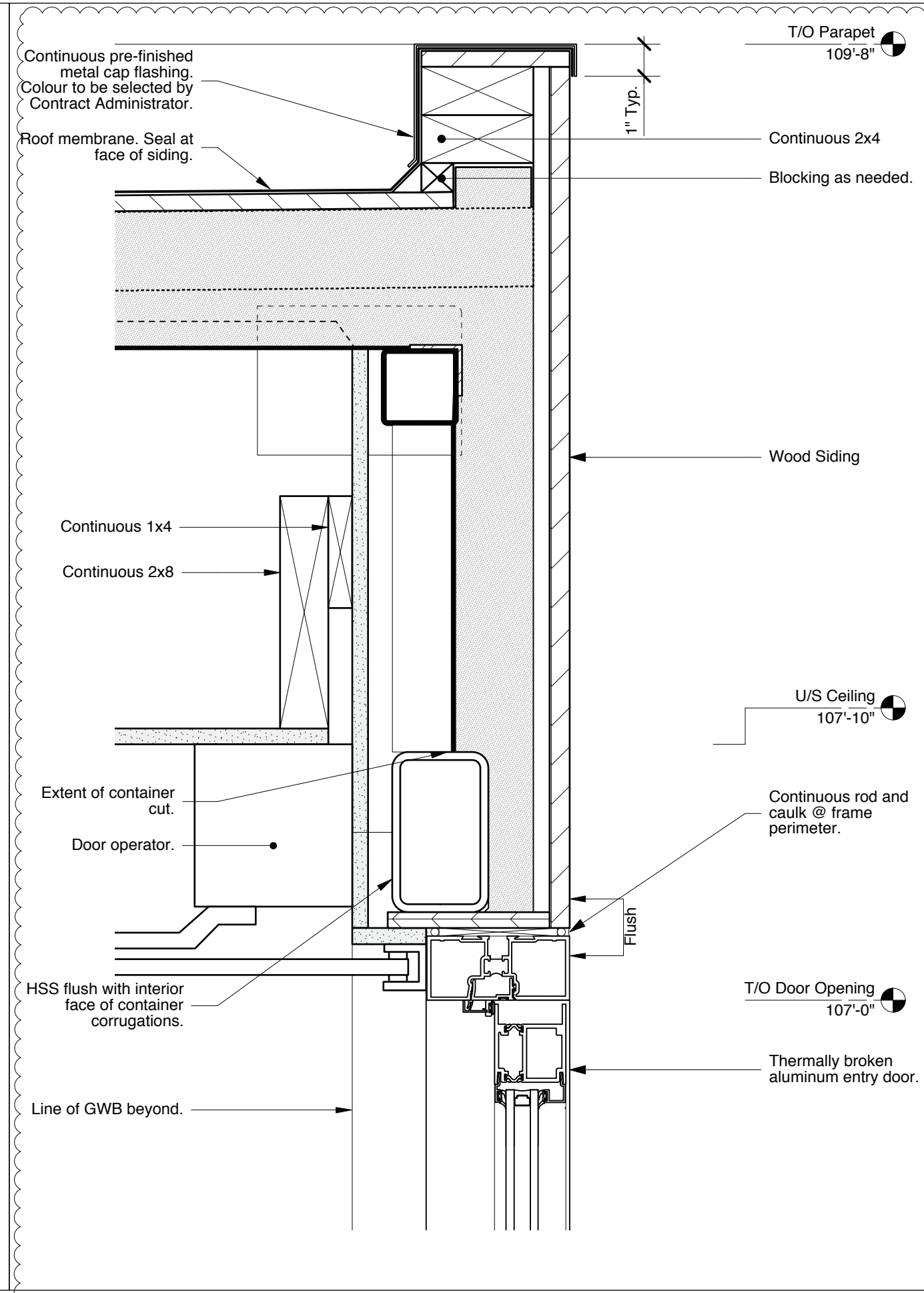
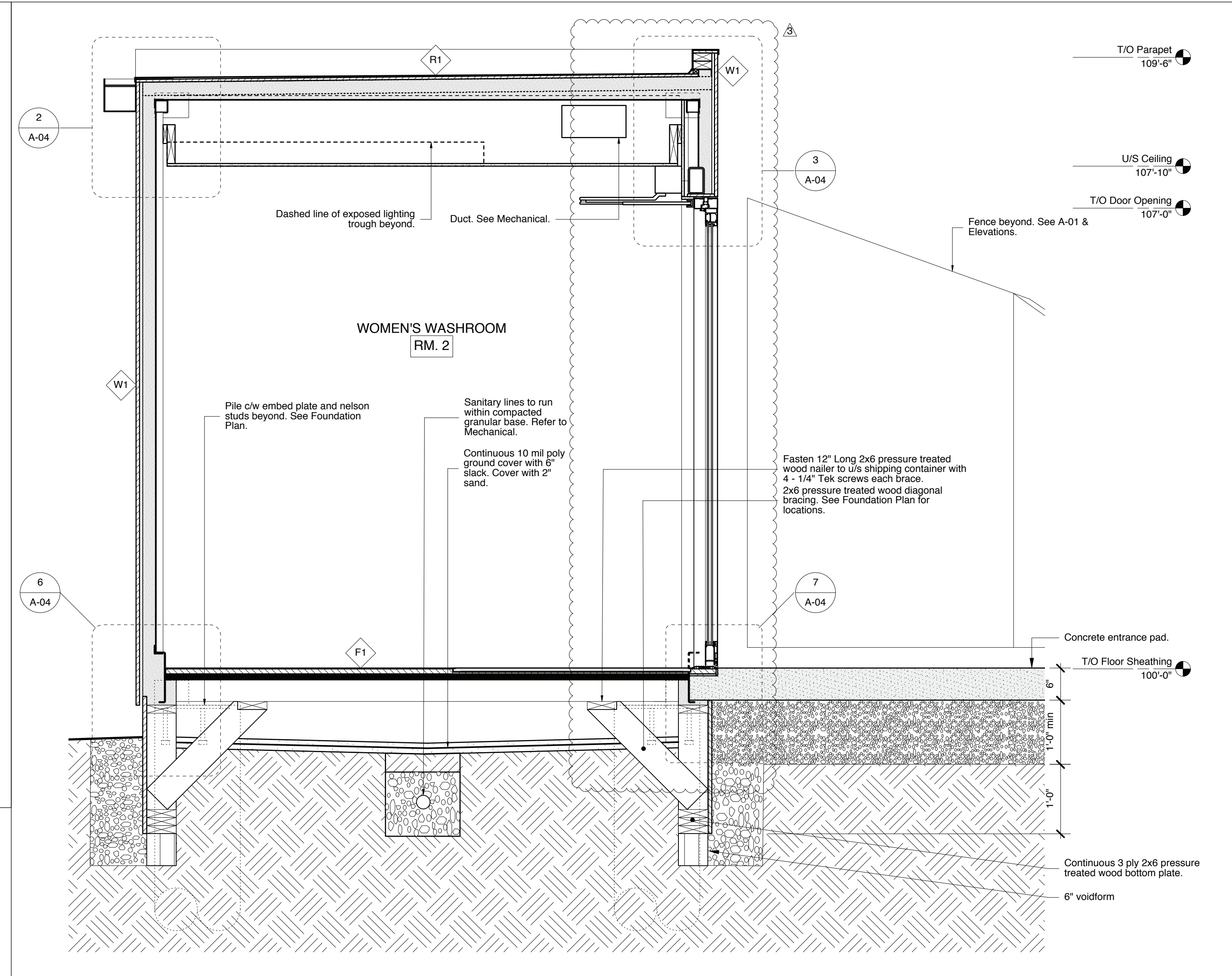


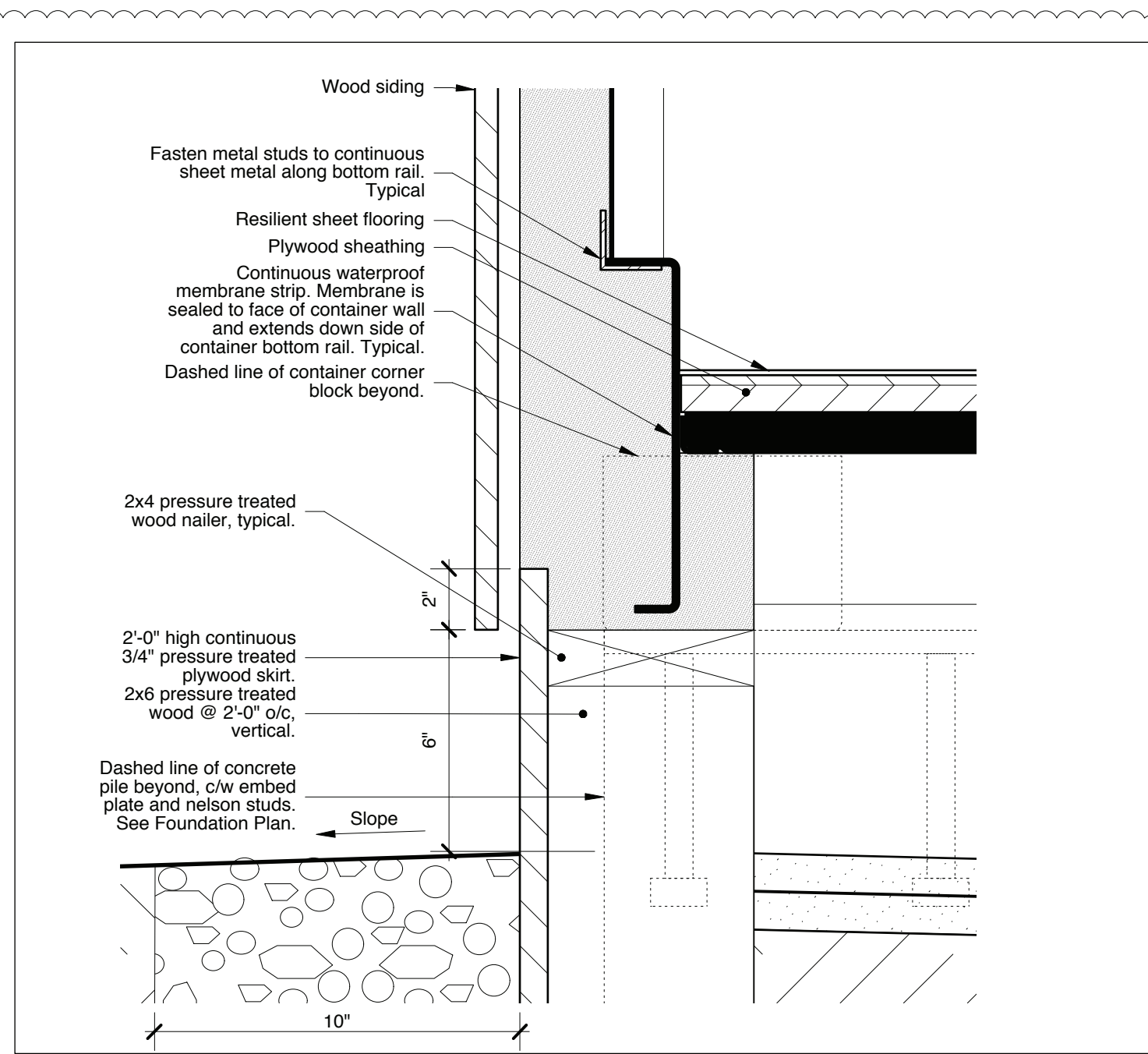
2 Section Detail of Rain Gutter
A-04 1:4



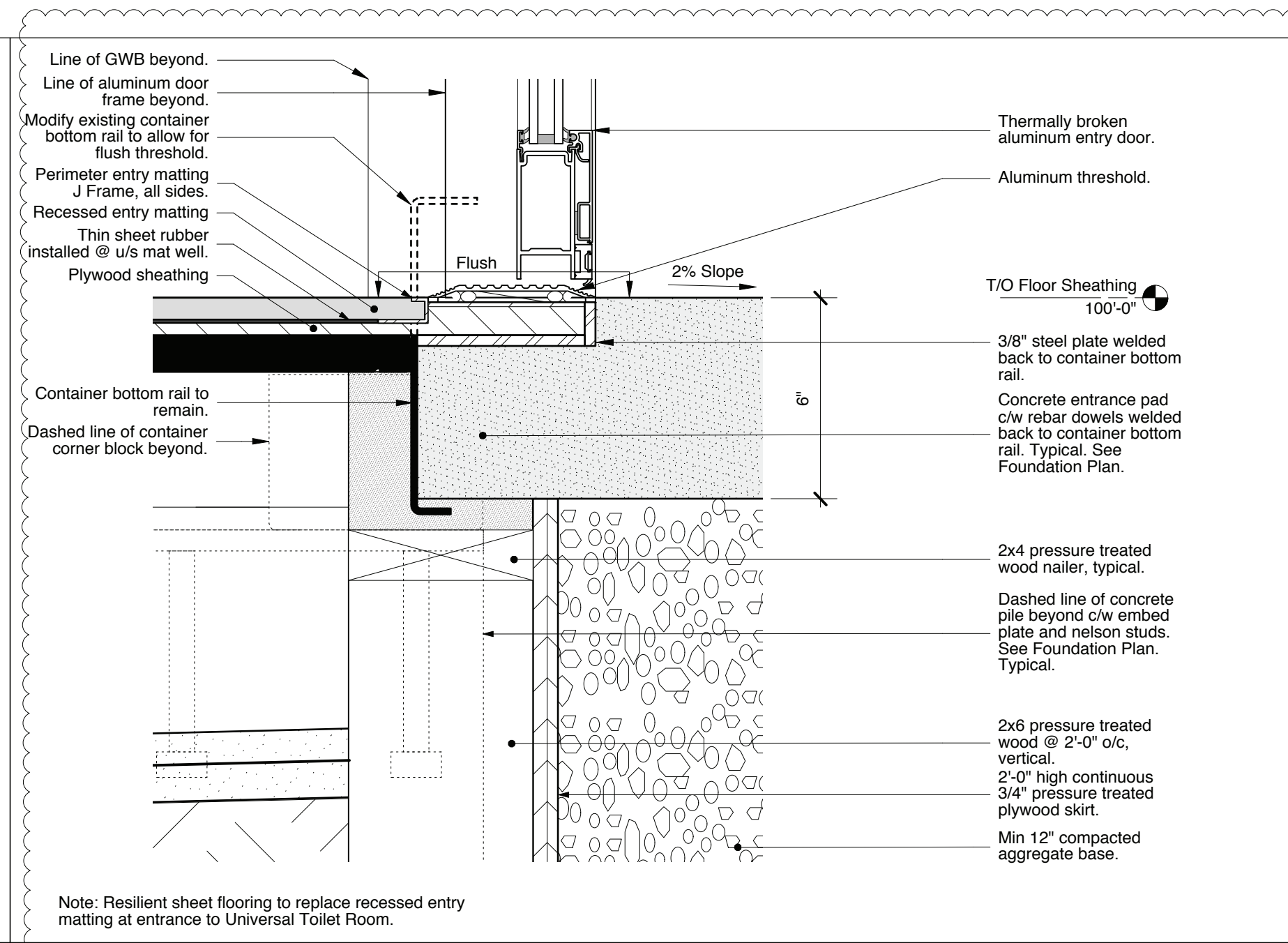
3 Typical Section Detail of Entry Door Header
A-04 1:4



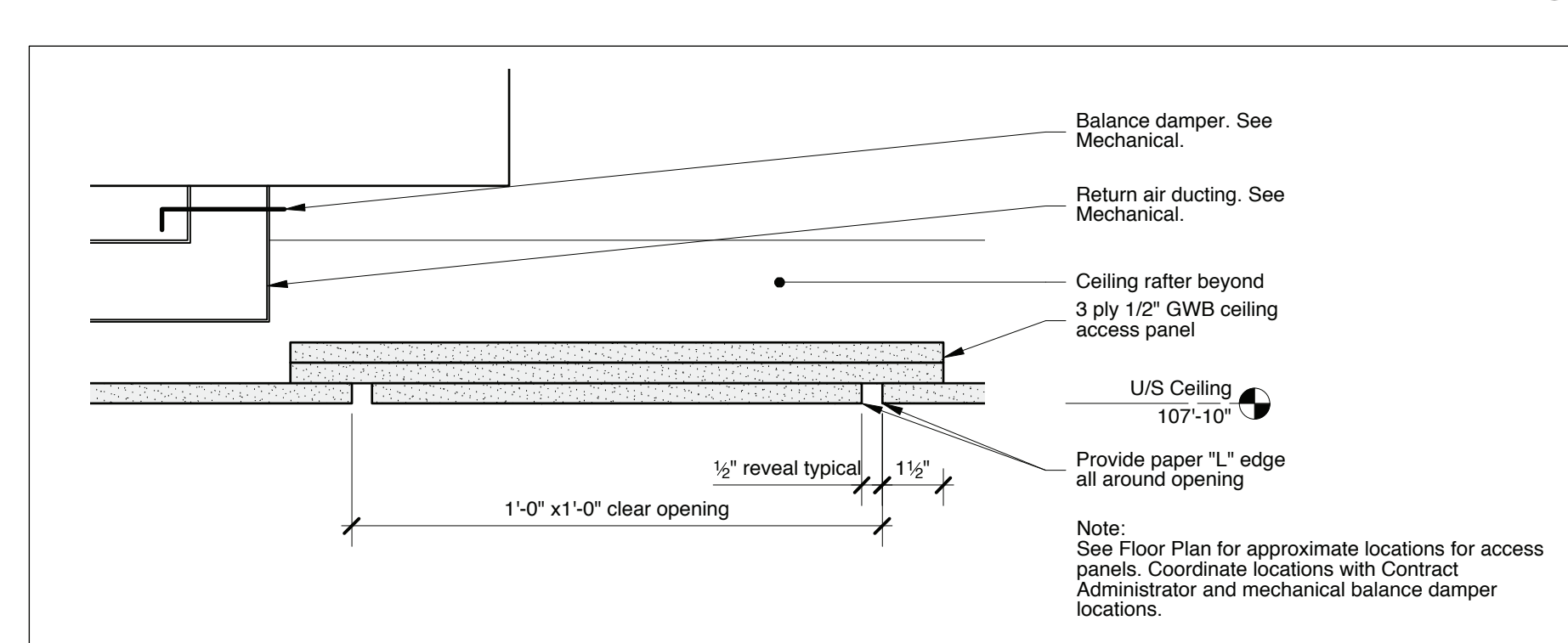
1 Section Through Common Lavatories
A-04 1:15



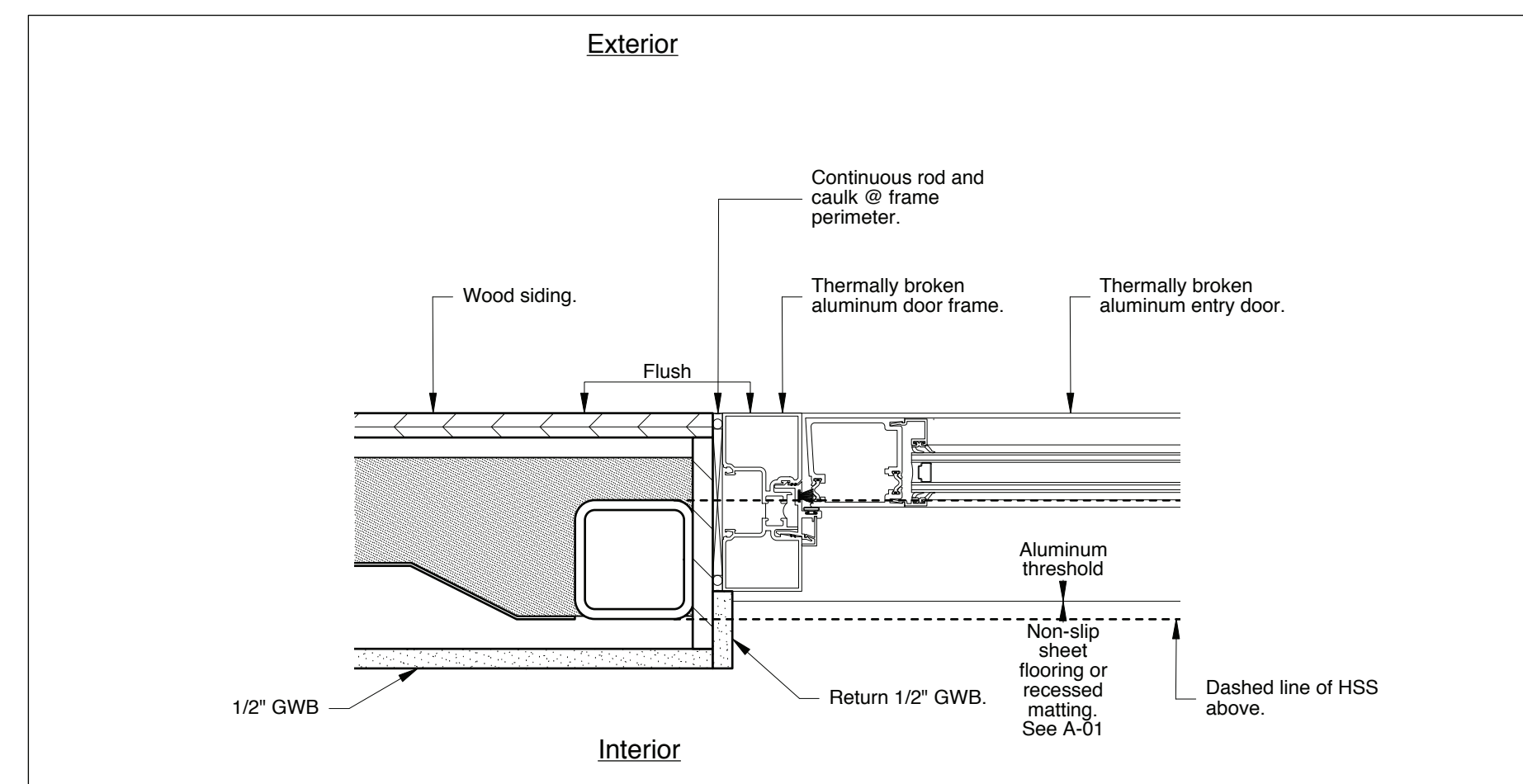
6 Typical Section Detail of Foundation
A-04 1:4



7 Typical Section Detail of Entry Door Sill
A-04 1:4



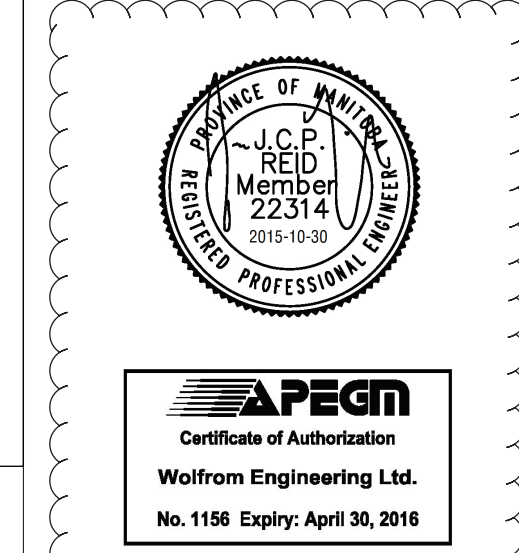
5 Section Detail of Gypsum Ceiling Access Panel (CP)
A-04 1:4



10 Plan Detail of Typical Entrance Jamb
A-04 1:4

Owner
The City of Winnipeg
185 King Street, Main Floor
Winnipeg, MB R5B1J1

No.	Date	Revision Notes
1	2015.08.18	Issued for Review
2	2015.09.16	Issued for Construction
3	2015.10.28	Issued for Addendum 1



This drawing must not be scaled. The contractors shall verify all dimensions and other data on site prior to commencement of work. Discrepancies, errors, and omissions are to be reported to the Architect prior to proceeding with the Work.
Drawings and specifications as instruments of service are the property of the Architect; the copyright in the same being reserved to him.
No reproduction or revision to these drawings may be made without the permission of the Architect, and when made, must bear his name. All prints to be returned to the Architect upon request.