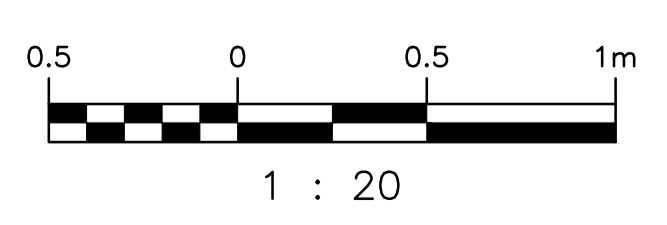


NOTES:

- SEE DRAWING 1-0169L-S0004 FOR GENERAL NOTES.
- SEE DRAWING 1-0169L-S0005 FOR STRUCTURAL NOTES.

DRAWING NUMBER	REFERENCE DRAWINGS
S-265	AINSLIE COMM. & PUMPING STATION - SITE PLAN
403-B	AINSLIE COMM. & PUMPING STATION - SUPERSTRUCTURE & DETAILS
403-A	AINSLIE COMM. & PUMPING STATION - REINFORCING DETAILS
403	AINSLIE COMM. & PUMPING STATION



NO.	REVISIONS	DATE	DESIGN	CHECK
00	ISSUED FOR ADDENDUM - MANHOLE DETAILS	2015/09/28		

 SNC-LAVALIN INC. 148 Nature Park Way Winnipeg, MB, Canada R3P 0X7 204-786-8080	
DESIGNED BY: I. PARKINSON	CHECKED BY:
DRAWN BY: B. DICKSON	APPROVED BY:
SCALE: 1:20	ISSUED FOR CONSTRUCTION
DATE: 2015/09/23	BY:
CONSULTANT NO.:	DATE:

ENGINEER'S SEAL

**PRELIMINARY
NOT TO BE
USED FOR
CONSTRUCTION**

THE CITY OF WINNIPEG
WATER AND WASTE DEPARTMENT

OLIVE WASTEWATER LIFT STATION
2015 UPGRADES
PLAN AND ELEVATION
MANHOLE STRUCTURE

CITY DRAWING NUMBER 1-0169L-S0010	SHEET 001	REV. 00	SIZE A1
--------------------------------------	--------------	------------	------------