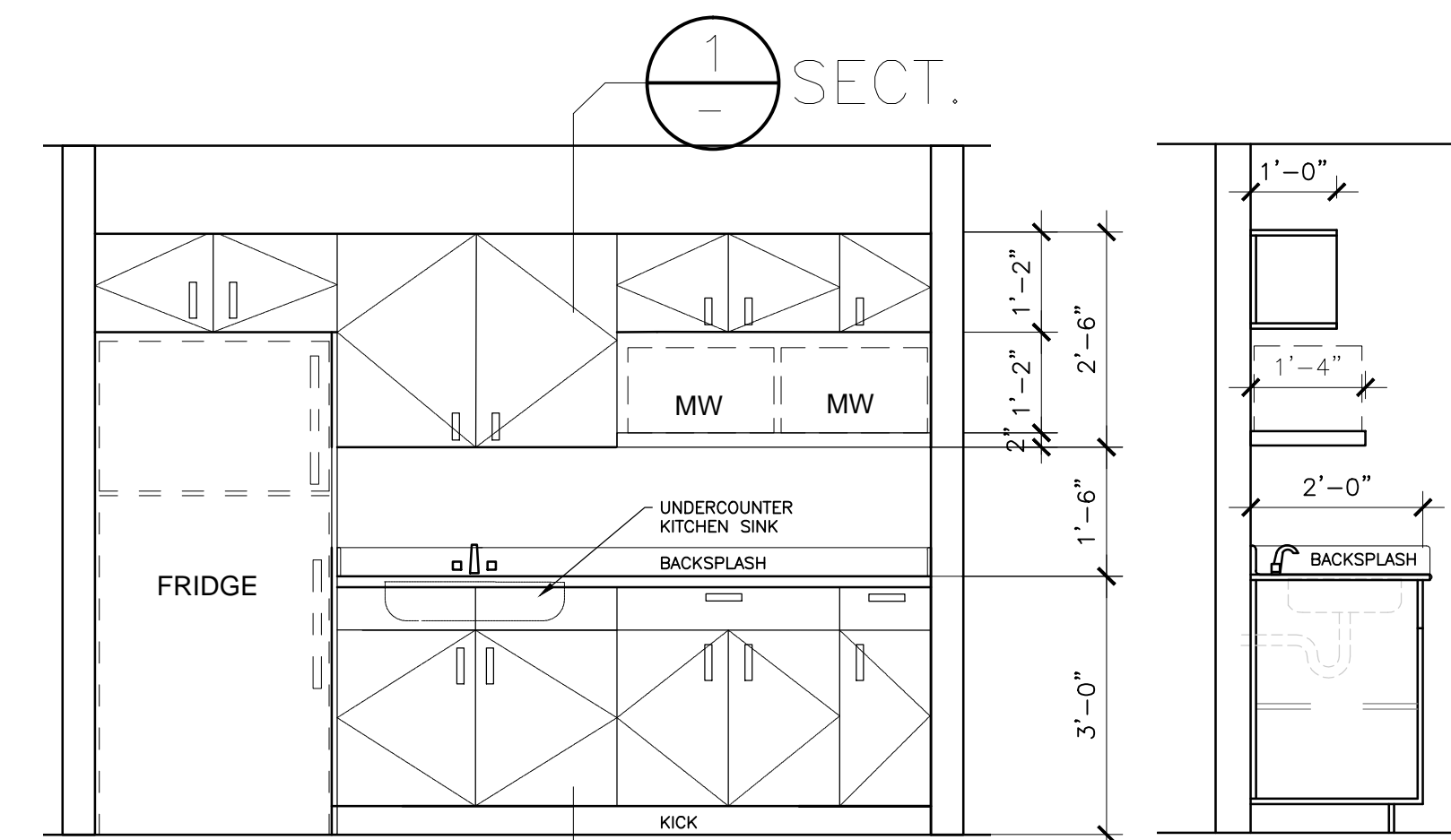
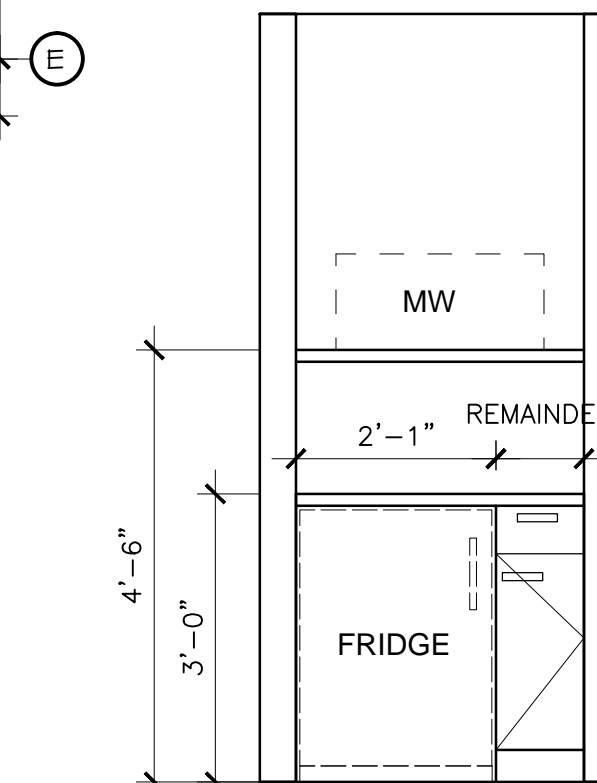


1 PARTIAL FLOOR PLAN
SCALE: 1/2" = 1'-0"



ELEV A
SCALE: 1/2" = 1'-0"

SECTION 1
SCALE: 1/2" = 1'-0"



MICROWAVE/FRIDGE MILLWORK
SCALE: 1/2" = 1'-0"

MILLWORK NOTES:

- STANDARDS**
-CURRENT AMAC PREMIUM GRADE MILL STANDARD.
- MILLWORK MATERIALS**
-DRAWER SIDES, BODIES, TO BE 1/2" MELAMINE, BOTTOMS TO BE 1/4" TEMPERED MASSONITE.
-CASEWORK ALL CONSTRUCTION TO BE 3/4" PLYWOOD, PLASTIC LAMINATE (PLAM) TOPS "FLO-FORM" PLASTIC LAMINATE ON PARTICLE BOARD.
- SHOP DRAWINGS**
-SHOP DRAWINGS TO BE SUBMITTED FOR APPROVAL PRIOR TO FABRICATION.
- MILLWORK HARDWARE**
DRAWER GUIDES:
-KNAPP & VOGT-HEAVY DUTY, FULL EXTENSION.
CABINET DRAWERS:
-PEDESTAL LOCKS COLOUR BRUSHED ALUMINUM TO BE FLUSH MOUNTED
HINGES:
-HETTICH, CONCEALED HINGES, NICKEL FINISH, 170 DEGREES.
DRAWER HANDLES:
-HAFELE, STAINLESS STEEL.
-GROMMET, HAFELE (56MM) BRUSHED ALUM.

LEGEND:

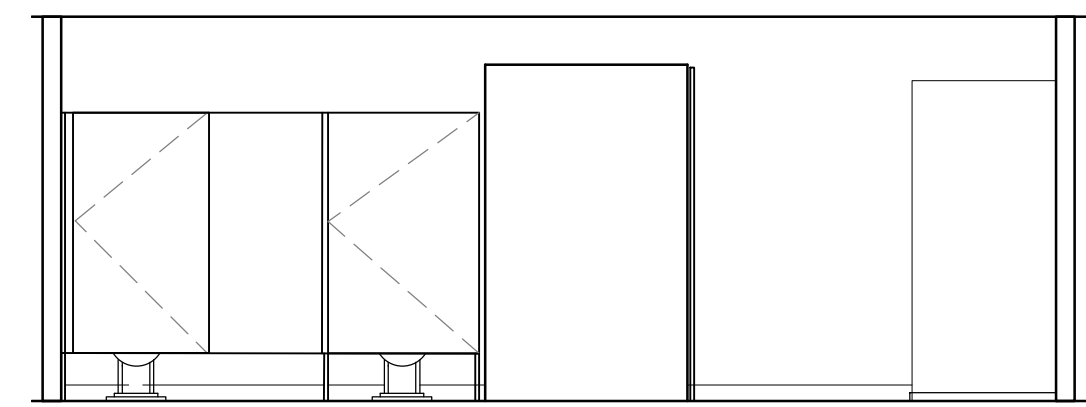
NAME	PRODUCT	MADE
PLAM-1	NAME	NAME
PLAM-2	NAME	NAME

NOTES:

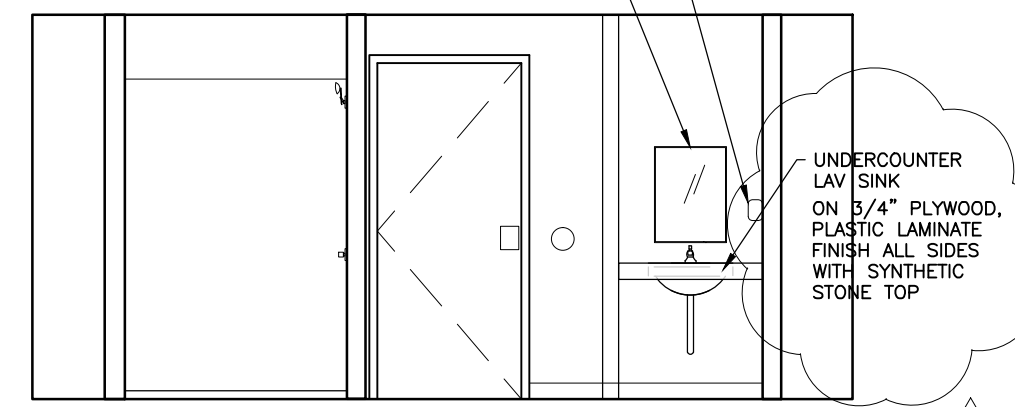
- DRYWALL TRADE TO PROVIDE SOLID WOOD BACKING BEHIND ALL MILLWORK FINISHES, WASHROOM ACCESSORIES, AND SPECIALTY ITEMS I.e. COAT RACK AND ALL TOILET PARTITIONS.
- PROVIDE ALSO SOLID WOOD BACKING ON ALL MEETING ROOMS FOR MOUNTING COW SUPPLIED BOARD AND COMPUTER DESKS.
- PROVIDE 3/4" PLYWOOD BACKING AROUND ALL WINDOW AND DOOR FRAMES AND BEHIND EXTERIOR WALL MOUNTED LIGHT FIXTURES.

NOTES:

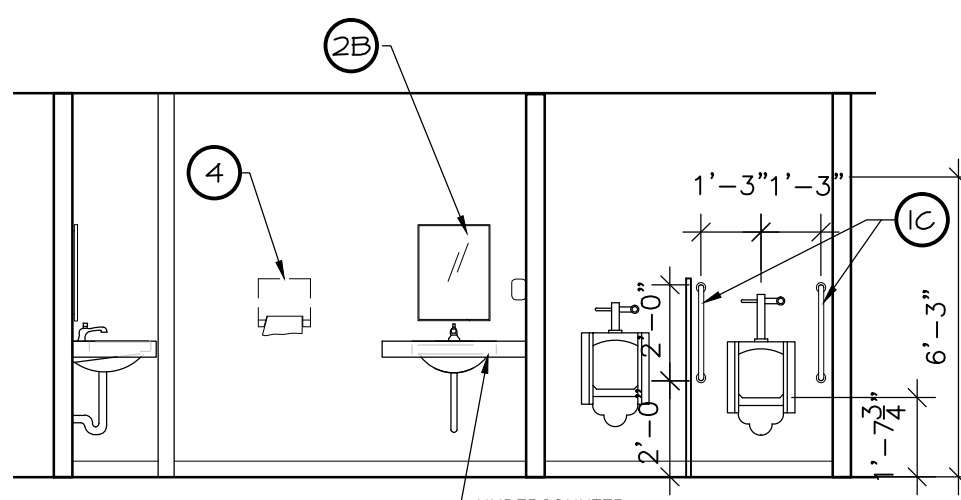
- IF AND WHEN WORK WILL INVOLVE SAW-CUTTING OF EXISTING REINFORCED CONCRETE SLAB FOR MECHANICAL/PLUMBING WORK, THE CONTRACTOR MUST OBTAIN CONTRACT ADMINISTRATOR APPROVAL AND CERTIFICATION ON THE METHOD, DIMENSIONS AND DEPTH PRIOR TO ANY WORK.



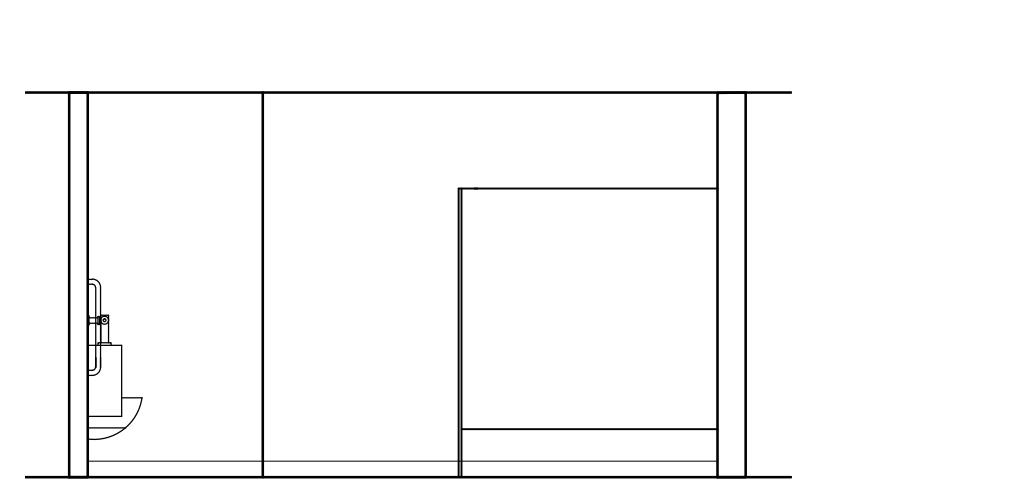
ELEV B
SCALE: 1/4" = 1'-0"



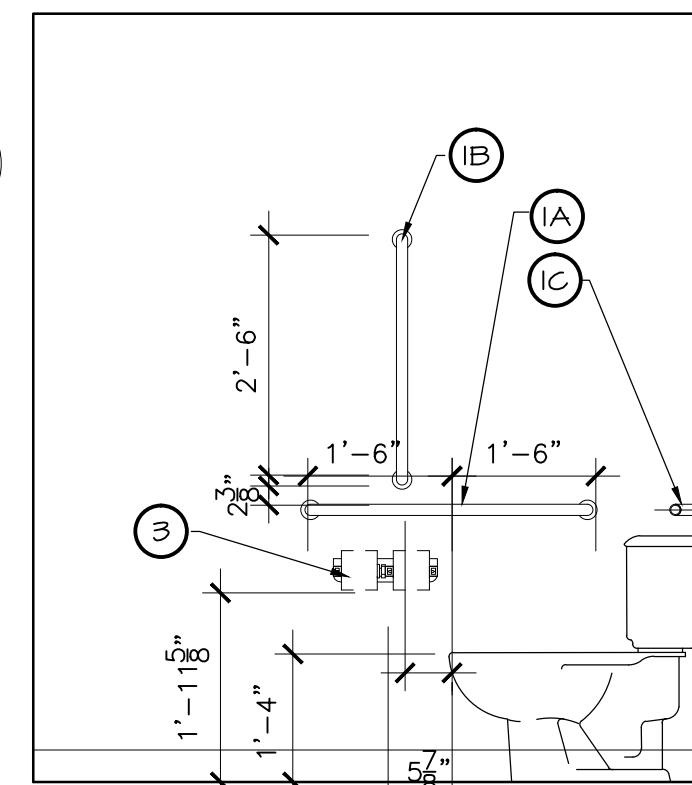
ELEV C
SCALE: 1/4" = 1'-0"



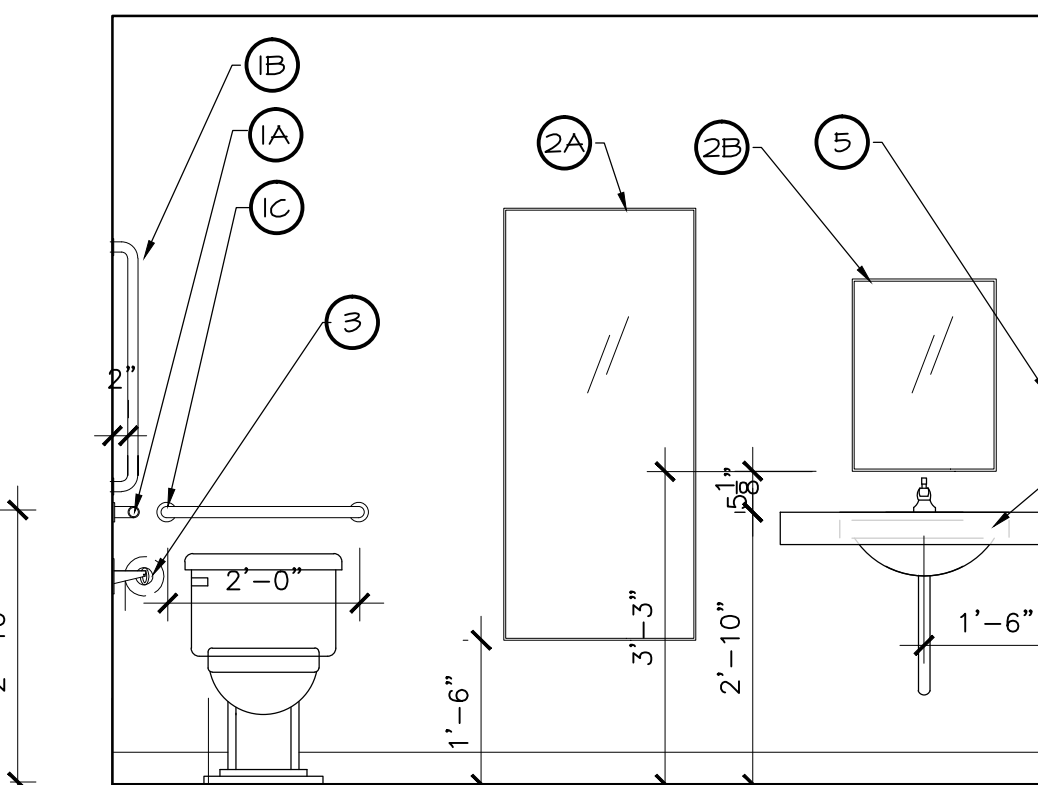
ELEV D
SCALE: 1/4" = 1'-0"



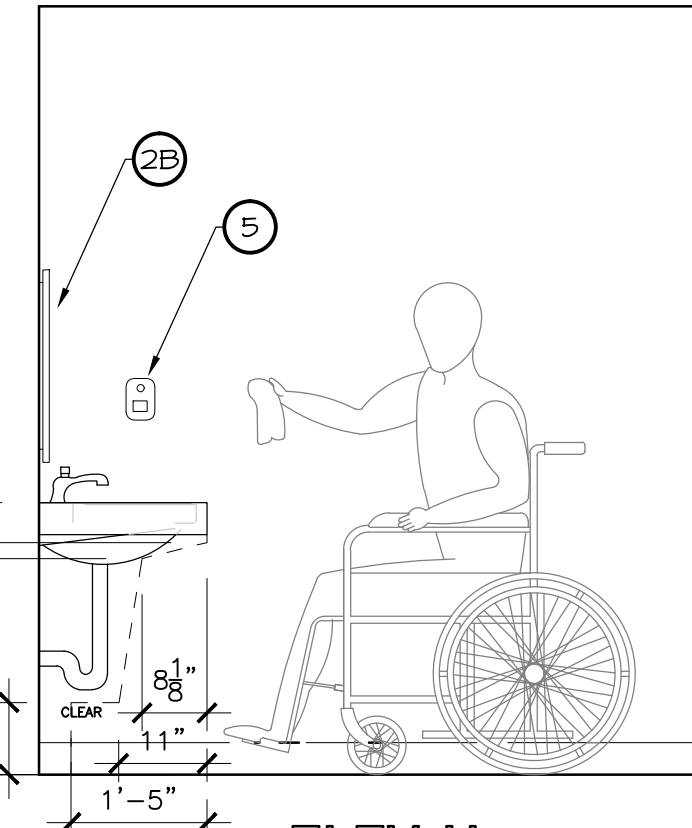
ELEV E
SCALE: 1/4" = 1'-0"



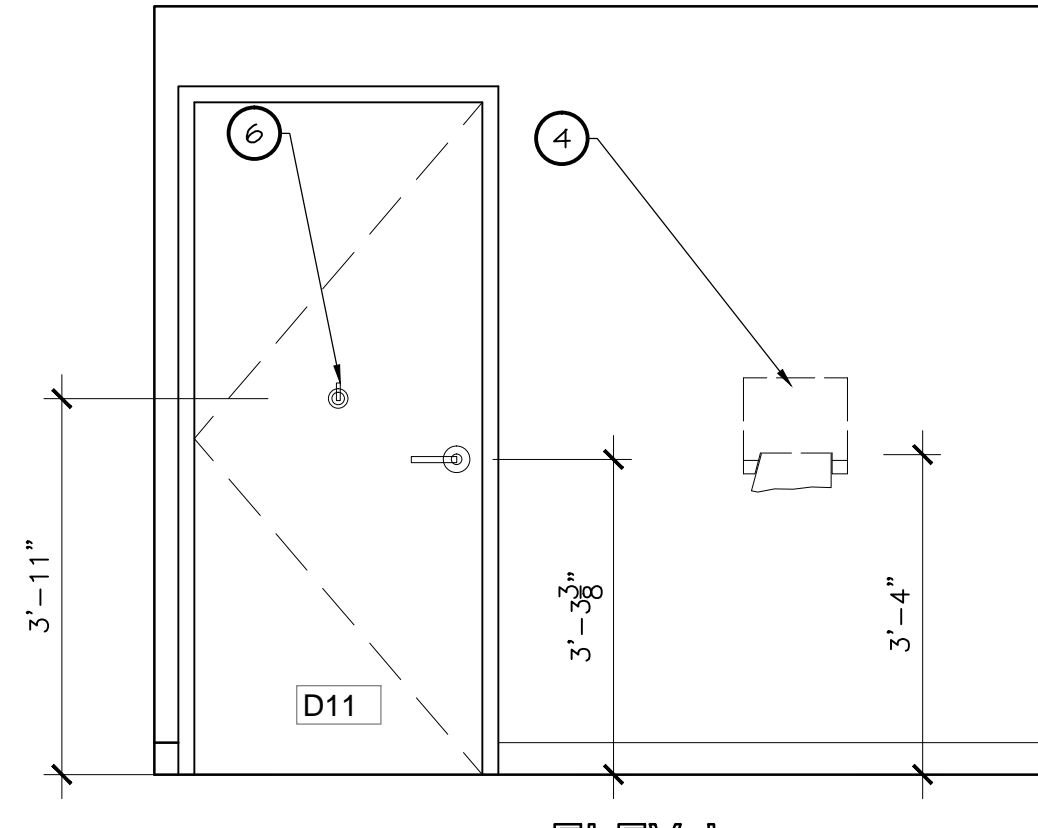
ELEV F
SCALE: 1/2" = 1'-0"



ELEV G
SCALE: 1/2" = 1'-0"



ELEV H
SCALE: 1/2" = 1'-0"



ELEV I
SCALE: 1/2" = 1'-0"

ITEM QTY	ACCESSORIES	MODEL NO.	FINISH	HPRL
2	GRAB BARS 36"	3101 36"	32D	ASH
2	GRAB BARS 30"	3101 30"	32D	ASH
4	GRAB BARS 24"	3101 24"	32D	ASH
4	HRRORS 24"x12"	CRCC-2412	2KD	ASH
3	HRRORS 18"x24"	CRCC-1824	2KD	ASH
3	TOILET PAPER DISPENSER			
2	PAPER TOWEL DISPENSER			
3	SOAP DISPENSER			
3	COLLAPSIBLE COAT HOOK	US6	32D	ASH
1	HALE/HEFALE HC SIGN	HPRL: 4	Supplied by Plamb	

NOTE:
ITEM 3, ITEM 4, & ITEM 5 TO BE SUPPLIED BY CITY OF WINNIPEG AND INSTALLED BY CONTRACTOR.
ITEM 1 TO BE REVIEWED AND APPROVED BY CITY OF WINNIPEG PRIOR TO FABRICATION.

REV	DESCRIPTION	DATE	BY
02	ISSUED FOR ADDENDUM 02	JULY 10 2015	AR
01	ISSUED FOR TENDER	JUNE 10 2015	AR
00	ISSUED FOR CONSTRUCTION	JUNE 2 2015	AR

SEAL: SEAL:

THIS DRAWING MUST NOT BE SCALED.
THE GENERAL CONTRACTOR SHALL VERIFY ALL DIMENSIONS, DATUMS AND LEVELS PRIOR TO COMMENCEMENT OF WORK AND IS HELD RESPONSIBLE FOR REPORTING ANY DISCREPANCY OR OMISSION TO NEIL COOPER ARCHITECT INC. IMMEDIATELY.

THIS DRAWING IS THE EXCLUSIVE PROPERTY OF NEIL COOPER ARCHITECT INC. AND CAN BE REPRODUCED ONLY WITH THE PERMISSION OF NEIL COOPER ARCHITECT INC. IN WHICH CASE THE REPRODUCTION MUST BEAR THEIR NAME AS THE ARCHITECTURAL FIRM.

INTERIOR ELEVATIONS

PROJECT: **TRANSPORTATION MANAGEMENT CENTRE RENOVATIONS**
BID # 427-2015
821 Elgin Ave., Winnipeg, Manitoba

Neil Cooper Architect Inc.
10-395 Berry Street, Winnipeg, Manitoba R3J 1N6

DRAWN BY: AR	CHECKED BY: NC	SHEET NO: A23R2	REV NO:
DATE: DEC 3, 2014	SCALE: AS NOTED		