

DRAWING NOTES:

- 1 PROVIDE CLASS J CURRENT LIMITING FUSE FOR ALL FUSIBLE DISCONNECT SWITCHES.

MOTOR/EQUIPMENT SCHEDULE																	
ITEM	DESCRIPTION	EQUIPMENT			FEED FROM	STARTER					CONTROLS			FIRE ALARM SHUT DOWN	REMARKS	SEE NOTES BELOW	
		LOCATION	K/W/HP/AMPS	VOLTS/Ø		PKG UNIT	TYPE	FUNC	PL	PB	HOA	SUPPLY BY	TYPE				SUPPLY BY
AHU-1.NEW	AIR HANDLING UNIT	MECH ROOM	WQCP-50A MCA-48A	208/1	CDP-A	Y											
CU-1.NEW	CONDENSING UNIT	EXTERIOR	MOCP-30A MCA-17.2A	208/1	PANEL D	Y											INTERLOCK WITH AHU-1.NEW
EF-1.NEW	EXHAUST FAN	MENS M11	0.72A	120/1													
EF-2.NEW	EXHAUST FAN	WOMENS M14	0.72A	120/1	EX. PANEL												
EF-3.NEW	EXHAUST FAN	UNIVERSAL WASHROOM M30	0.34A	120/1	PANEL D												
EF-4.NEW	EXHAUST FAN	WASHROOM M13	0.34A	120/1	PANEL D												
EF-5.NEW	EXHAUST FAN	MECH./ELEC. M05	0.43	120/1	PANEL D												

GENERAL NOTES:
 A. MANUAL MOTOR STARTER TO BE C/W PILOT LIGHT AND OVERCURRENT PROTECTION.
 B. ALL STARTERS TO BE SUPPLIED & INSTALLED BY THE ELECTRICAL CONTRACTOR (EC) UNLESS OTHERWISE NOTED.
 C. DISCONNECT SWITCHES TO BE SUPPLIED & INSTALLED BY THE ELECTRICAL CONTRACTOR (EC)
 D. ELECTRICAL CONTRACTOR TO PROVIDE CIRCUIT BREAKERS AND WIRING ACCORDING TO THE FINAL NAMEPLATES OF THE MECHANICAL EQUIPMENT AT NO COST.
 E. REFER TO PANELBOARD SCHEDULES AND SINGLE LINE DIAGRAM FOR MOTOR AND EQUIPMENT OVERLOAD PROTECTION.

FVNR = FULL VOLTAGE NON-REVERSING
 RVNR = REVERSE VOLTAGE NON-REVERSING
 MAN = MANUAL STARTER
 MAG = MAGNETIC STARTER
 HOA = HAND/OFF/AUTO
 PL = PILOT LIGHT
 Y = YES
 F = FLOAT SWITCH
 SS = SOFT STARTER
 INT = INTEGRAL
 T = THERMOSTAT
 PS = PRESSURE SWITCH

AD = AMMONIA DETECTION SYSTEM
 CO = CARBON MONOXIDE SENSOR
 MT = MANUAL TIMER(WALL MOUNTED)
 MS = MANUAL SWITCH
 ESC = ELECTRONIC SPEED CONTROLLER
 LS = LEVEL SWITCH
 TDS = TIME DELAY SWITCH(WALL MTD)
 FS = FLOW SWITCH
 CO2 = CARBON DIOXIDE SENSOR
 CHL = CHLORINE SENSOR
 ES = END SWITCH
 H = HUMIDISTAT

VFD = VARIABLE FREQUENCY DRIVE
 PB = PUSH BUTTON
 I = INTERLOCK
 RP = REMOTE PANEL
 TC = TIME CLOCK
 DDC = DIGITAL DATA CONTROL SYSTEM

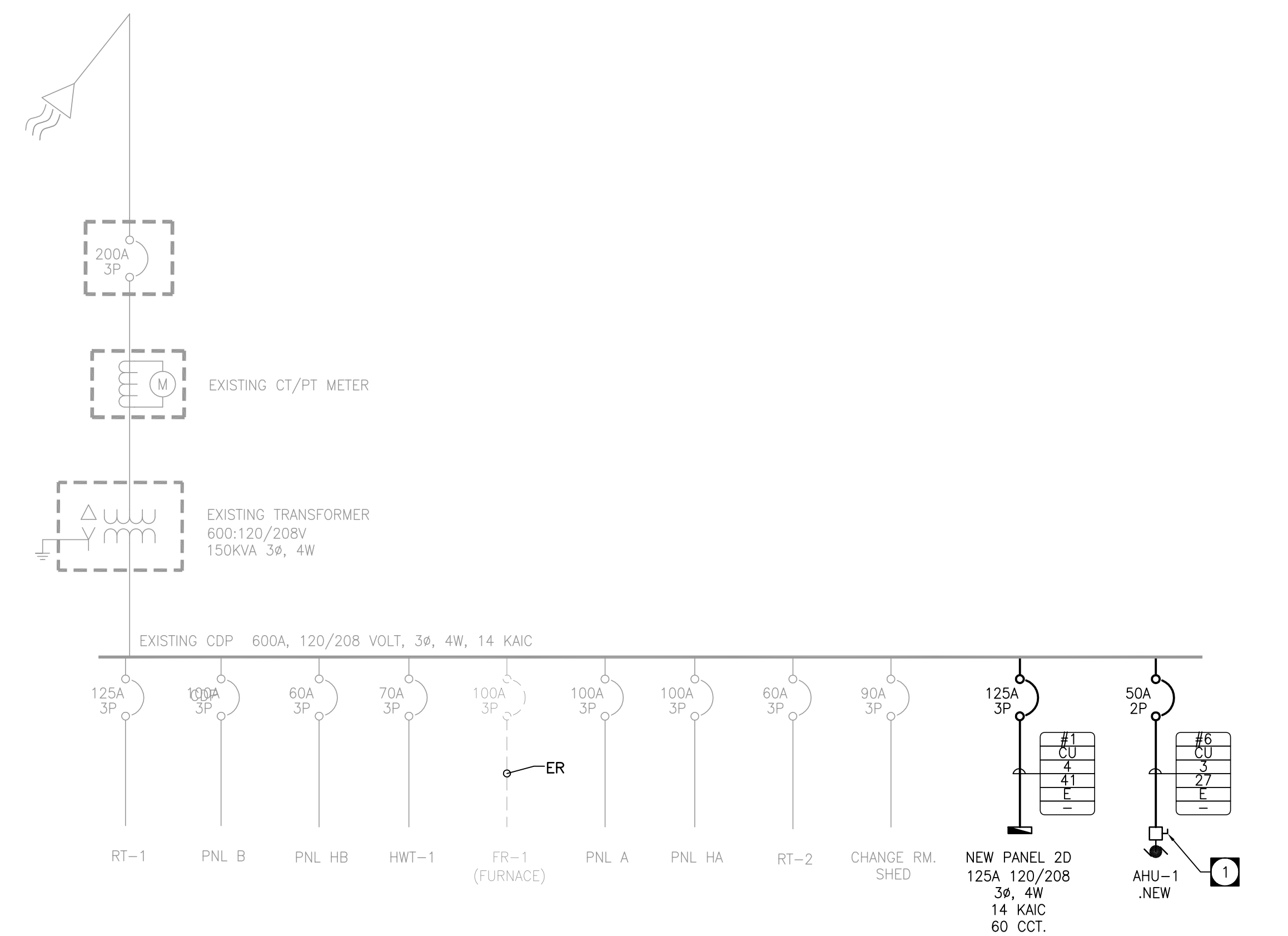
LUMINAIRE SCHEDULE									
TYPE	MANUFACTURER	CATALOGUE NO.	LAMPS		VOLTS	MOUNTING	REMARKS	NOTES/WATTS	
			NO.	TYPE					
A	METALUX	2M-254T5A-120-EBT1-U	2	54W T5HO	120	S/C	2'X4' FIXTURE SURFACE MOUNT	117	
A	CFI	25MR254-F501-120-1/2	2	54W T5HO	120	S/C	2'X4' FIXTURE SURFACE MODULAR	118	
B	HALO	SLD405830WH	N/A	LED	120	C	4" LED POT LIGHT	12.5	
B	LIGHTOLIER	55R830K7	N/A	LED	120	C	5" LED POT LIGHT	10	
C	LUMINAIRE LED	SPC 4 12"-NB-7WHP-3500K-120-OP-WHT	1	7W HP	120	S/W	WALL MOUNT FIXTURE, MOUNT HORIZONTALLY	31	
C	KENALL	MLAS813-PAN-PP-MW-6L30K-120	1	LED	120	S/W	WALL MOUNT FIXTURE, MOUNT HORIZONTALLY	6	
D	HALO	SLD606830WH	N/A	LED	120	C	6" LED POT LIGHT	12.5	
D	LIGHTOLIER	S7R830K10	N/A	LED	120	C	7" LED POT LIGHT	14	
XA	INVUE	VFS-70-MP-TT-WF-BZ-L	1	70W MH	120	S/W	SIGNAGE FLOOD LIGHT	90W	
XA	KEENE	PF2A070MAL-T	1	70W MH	120	S/W	SIGNAGE FLOOD LIGHT	70W	
XB	LUMINAIRE LED	AEL-12"-10WHP-120-DP-BKH	1	10W HP	120	S/W	OVER DOORWAY MOUNT	15W	
XB	KENALL	FNL6-12-MB-PP-13L-40K-DCC-DV	1	13W LED	120	S/W	OVER DOORWAY MOUNT	14W	

NOTES:
 1. ALL FLUORESCENT LAMPS ARE TO BE 3500°K AND A MINIMUM 82 CRI UNLESS NOTED OTHERWISE.
 2. FINISH AS SELECTED BY INTERIOR DESIGNER.

W = WALL TB = T-BAR
 R = RECESSED V = VALANCE DW = DRYWALL
 C = CEILING P = PENDANT CH = CHAIN

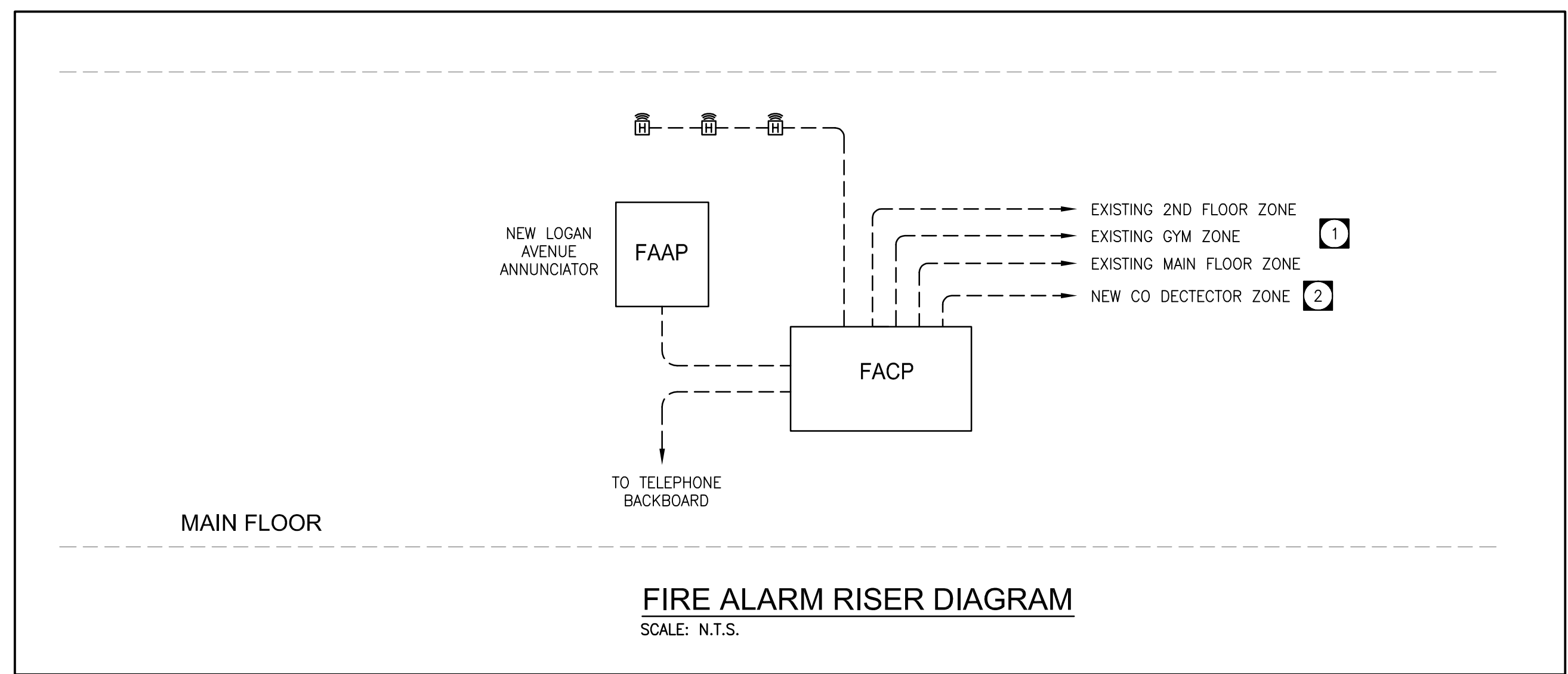
BATTERY BANK SCHEDULE									
NO.	MANUFACTURER	CATALOGUE NO.	INPUT VOLTS	OUTPUT VOLTS	SOURCE PANEL	QUANTITIES	MINIMUM WATTAGE x 1.25		
EBB#1	LUMACELL	RG24S-144-2-LD13-AT-TMBB	120	24		2	20		
EBB#2	LUMACELL	RG24S-144-2-LD13-AT-TMBB	120	24		2	20		
EBB#3	LUMACELL	RG24S-350-2-LD13-AT-TMBB	120	24		12	120		
	LUMACELL	LS SERIES - SELF POWERED	120		SEE DWG				

NOTES:
 LUMACELL MQM-2-LD13



PANEL '2D' (NEW)		VOLTAGE : SEE SINGLE LINE BUS : SEE SINGLE LINE				PHASE : SEE SINGLE LINE WIRE : SEE SINGLE LINE		
DESCRIPTION	LOAD WATTS	BKR SIZE	CIRCUIT	BKR SIZE	LOAD WATTS	DESCRIPTION		
EXIT SIGNS	15	1	2	15	800	DOOR OPERATOR VEST, M18		
EXHAUST FAN (EF-5)	100	15	3	4	15	600	HAND DRYER WOMEN M14	
EXTERIOR LGT	285	15	5	6	15	600	HAND DRYER MEN M11	
DISWASHER MPR#2	1000	15	7	8	15	600	DOOR OPERATOR WASHRM M13	
MICROWAVES MPR#2	1000	15	9	10	15	600	HAND DRYER WASHRM M13	
FRIDGE MPR#2	1000	15	11	12	20	1920	RECEP. CANTEEN M06	
DOOR OPERATOR UNIV. WASHRM	600	15	13	14	15	400	RECEP. CANTEEN M06	
HANDDRYER UNI WASHRM	600	15	15	16	15	1000	FRIDGE CANTEEN M06	
RECEP. MPR#2	400	15	17	18	15	1000	FRIDGE KITCHEN M08	
RECEP. MPR#3	1000	15	19	20	20	1920	RECEP. KITCHEN M08	
BASEBOARD MPR#3	3000	20	21	22	15	400	RECEP. KITCHEN M08	
		2P	23	24	15	1000	DISHWASHER KITCHEN M08	
BASEBOARD COMP. & OFFI.	2500	20	25	26	30	4500	BASEBOARD M05,M04,M03	
		2P	27	28	2P			
RECEP. COMPUTER M26	600	15	29	30	20	1920	ROOF RECEP.	
RECEP. COMPUTER M26	600	15	31	32	30			
RECEP. OFFICE M21	800	15	33	34	2P	3744	CU/AHU-1.NEW	
RECEP.MP M24/HALL M34	800	15	35	36	15			
BASEBOARD M30/M29	1500	15	37	38	15			
SPARE		15	43	40	15			
SPARE		15	45	46	15			
SPARE		15	47	48	15			
SPARE		15	49	50	15			
SPARE		15	51	52	15			
SPARE		15	53	54	15			
SPARE		15	55	56	15			
SPARE		15	57	58	15			
SPARE		15	59	60	15			
HTC.	11.5KW	LTG.	0.3KW	MTR.	3.8KW	MISC.	21.8KW	TOTAL : 37.4KW

FIRE ALARM ZONE	
ZONE NO.	DESCRIPTION
1	MAIN FLOOR
2	GYM
3	SECOND FLOOR
4	CO DETECTION



The drawings, specifications, revisions, addendums, and clarifications, must be read as a whole. Errors and omissions due to separation of the documents by the general contractor become the responsibility of the same.

This drawing must not be scaled.

The general Contractor must verify all dimensions, datums and levels prior to commencement of work. All errors and omissions must be reported immediately to the Architect.

Variations and modifications to work shown on this drawing shall not be carried out without written permission from the Architect.

TOWER PROJECT NO. :141033

TOWER ENGINEERING GROUP
 UNIT 1 - 1140 WAVERLEY ST. WINNIPEG, MB R3T 0P4
 TEL: (204) 925-1150 FAX: (204) 925-1155
 EMAIL: towereng@towereng.ca WEB: www.towereng.ca
 • WINNIPEG • CALGARY • CAMBRIDGE

harold funk architect inc.

Harold Funk Architect Inc.
 Architecture and Urban Design
 401-55 Donald Street, Winnipeg, Manitoba R3C 1L8
 T (204) 943-5087 info@funkarchitect.com
 F (204) 949-9231 funkarchitect.com

project
 WESTON MEMORIAL COMMUNITY CENTRE - INTERIOR RENOVATION
 WINNIPEG, MANITOBA

sheet title
ELECTRICAL SCHEDULES, RISER AND SINGLE LINE DIAGRAM LAYOUT

project number: 14-004 drawing number:
 scale: AS SHOWN
 drawn by: JM
 approved by: MM
 date: October 20, 2014

E4.0