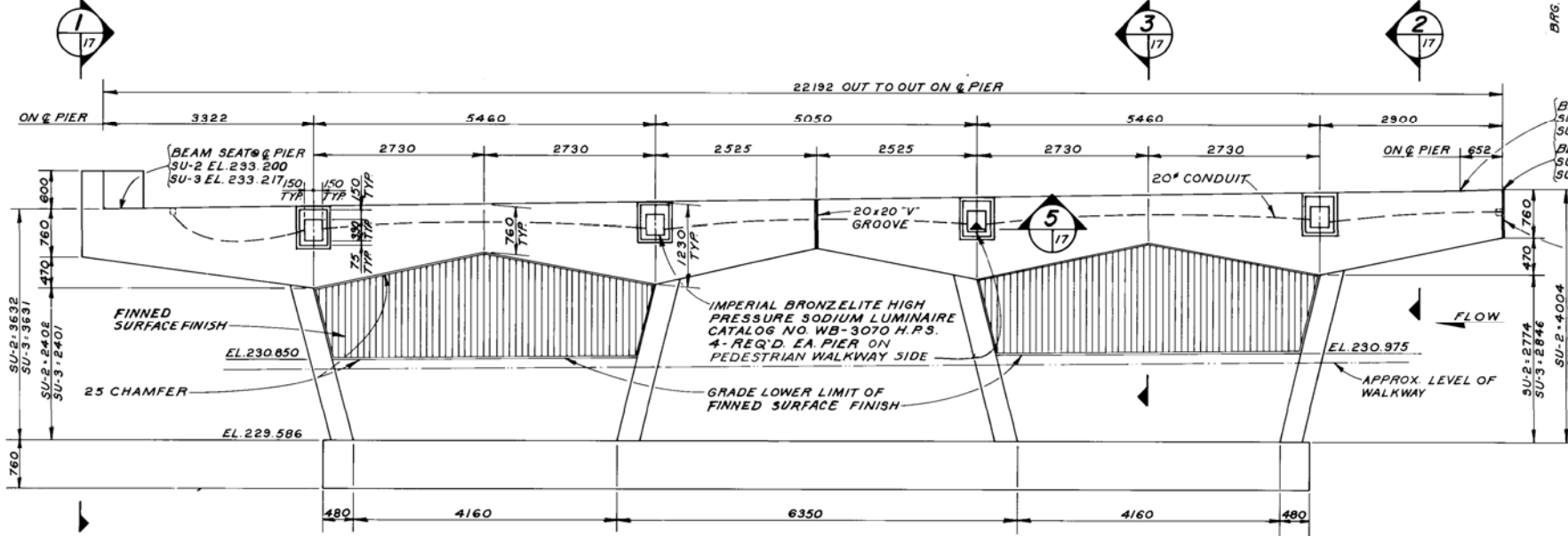
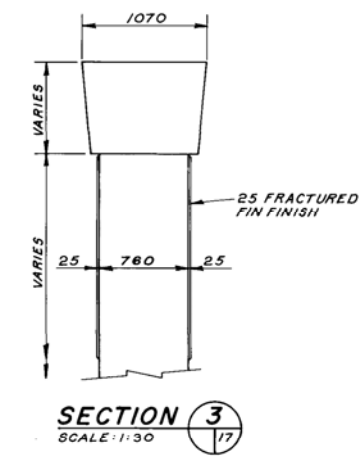
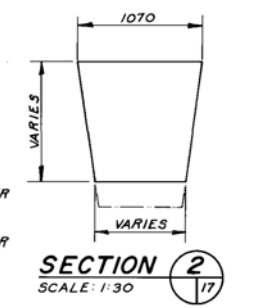
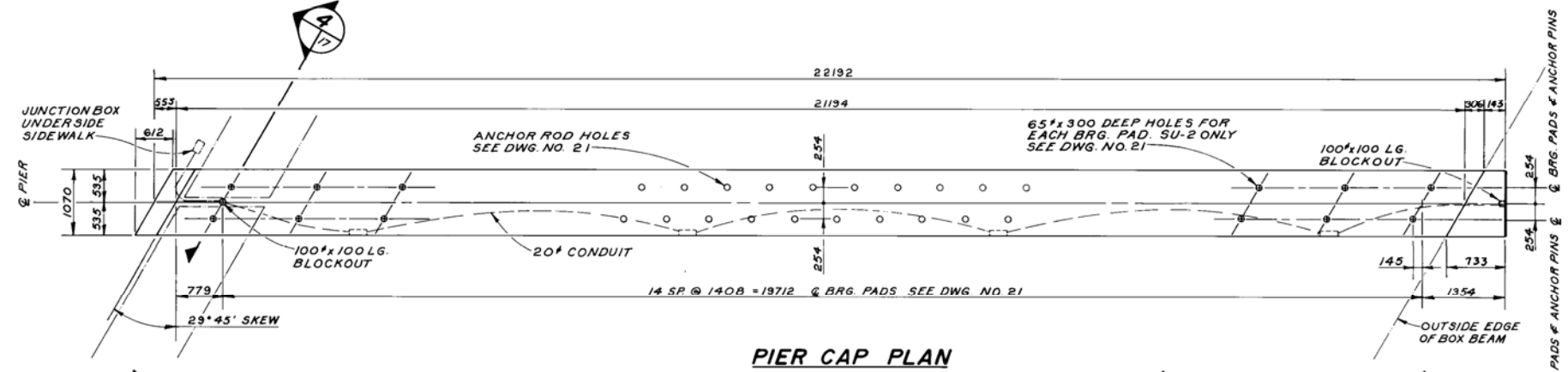
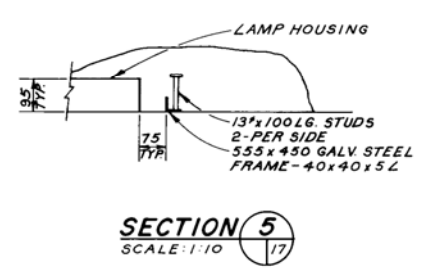
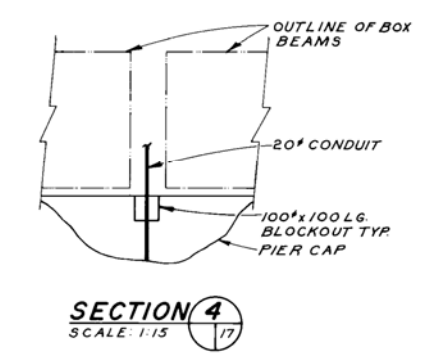


- ASPHALT WATER PROOFING**
1. FIRST COAT FLINTKOTE STATIC ASPHALT TYPE 1, OR EQUIVALENT.
 2. GLASS FIBRE INORGANIC MEMBRANE, 450 WIDE STRIP ALL AROUND PIER, PRESSED INTO FIRST COAT OF ASPHALT MIN. LAP 50.
 3. SECOND COAT OF FLINTKOTE ASPHALT TYPE 1, OR EQUIVALENT APPLIED OVER MEMBRANE.
 4. ANOTHER LAYER OF MEMBRANE AND ASPHALT TO BE APPLIED ON TOP OF FIRST THREE STEPS.



AS BUILT
APPROVED BY: *[Signature]*

- GENERAL NOTES**
1. ALL EXPOSED EDGES SHALL BE CHAMFERED 19mm EXCEPT WHERE SHOWN OTHERWISE.
 2. CONCRETE CLEAR COVER TO REINFORCING STEEL SHALL BE: 75 mm FOR FOOTING, 50 mm FOR ALL OTHERS.
 3. 13 mm FLEXCELL SHALL BE PLACED ON VERTICAL FACES OF CURB JOINTS.



NO.	REVISIONS	DATE	APP.

Consulting Engineers & Planners
DILLON

DESIGNED BY: C.I.D. DRAWN BY: C.R.B.
CHECKED BY: L.D.M. DATE: 80-08-25

APPROVED BY: *[Signature]* DATE: 22/9/80

THE CITY OF WINNIPEG
WORKS & OPERATIONS
STREETS & TRANSPORTATION

B-5403

STURGEON CREEK BRIDGE ON PORTAGE AVENUE
SOUTH STRUCTURE PIERS SU-2 & SU-3 CONC.

AUTHORIZED BY: *[Signature]* DATE: 11/10-10-22
ACCEPTED BY: *[Signature]* DATE: 20/10-22

SCALE: 1:50 OR AS NOTED DRAWING NO: B178-80-17