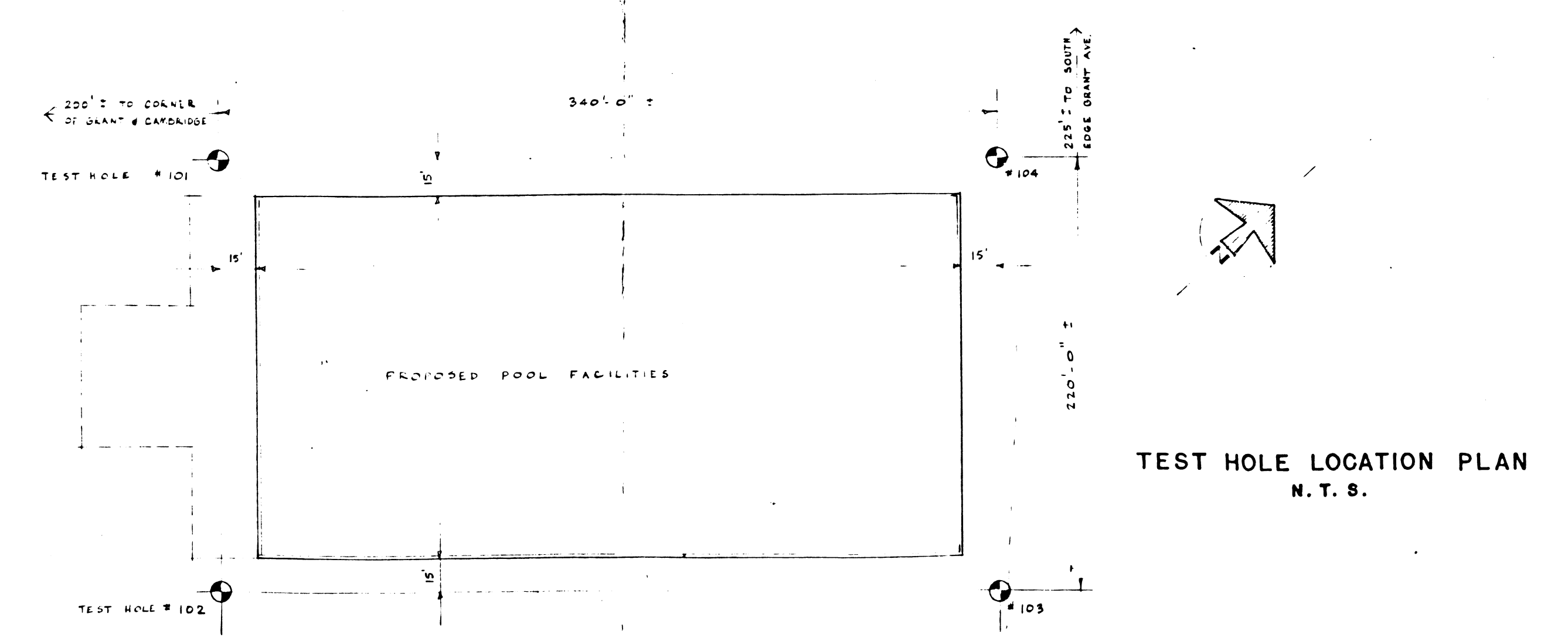
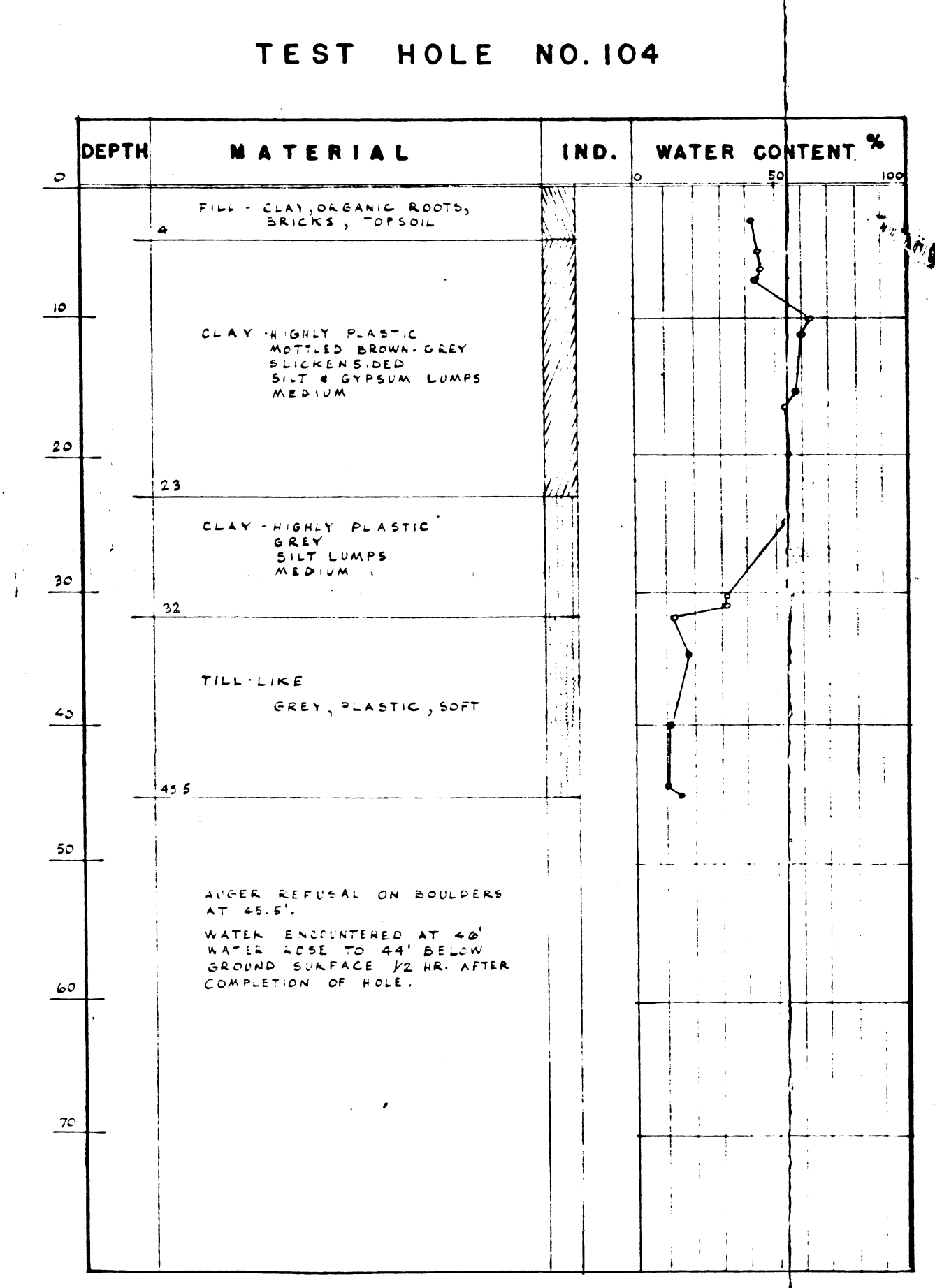
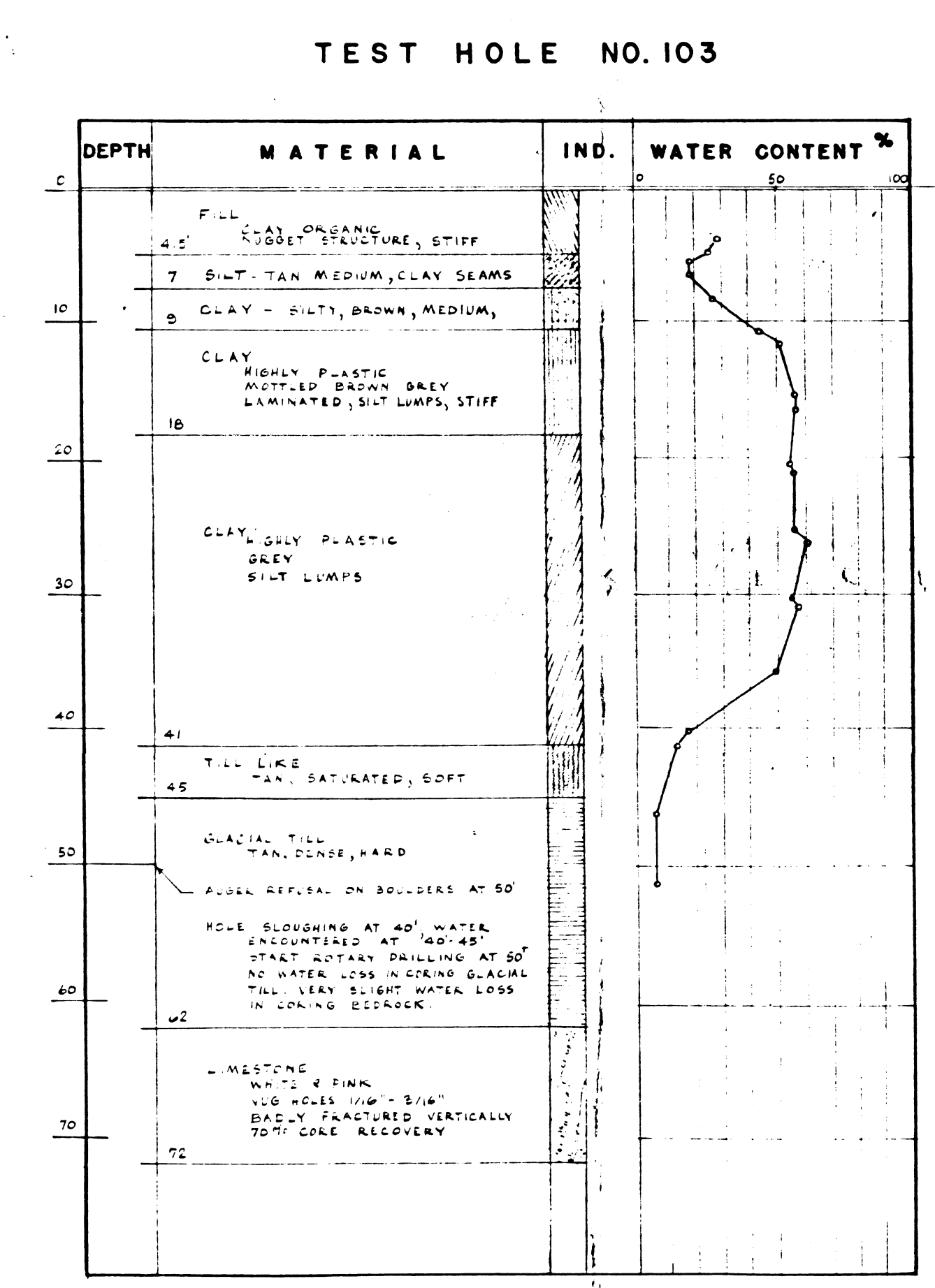
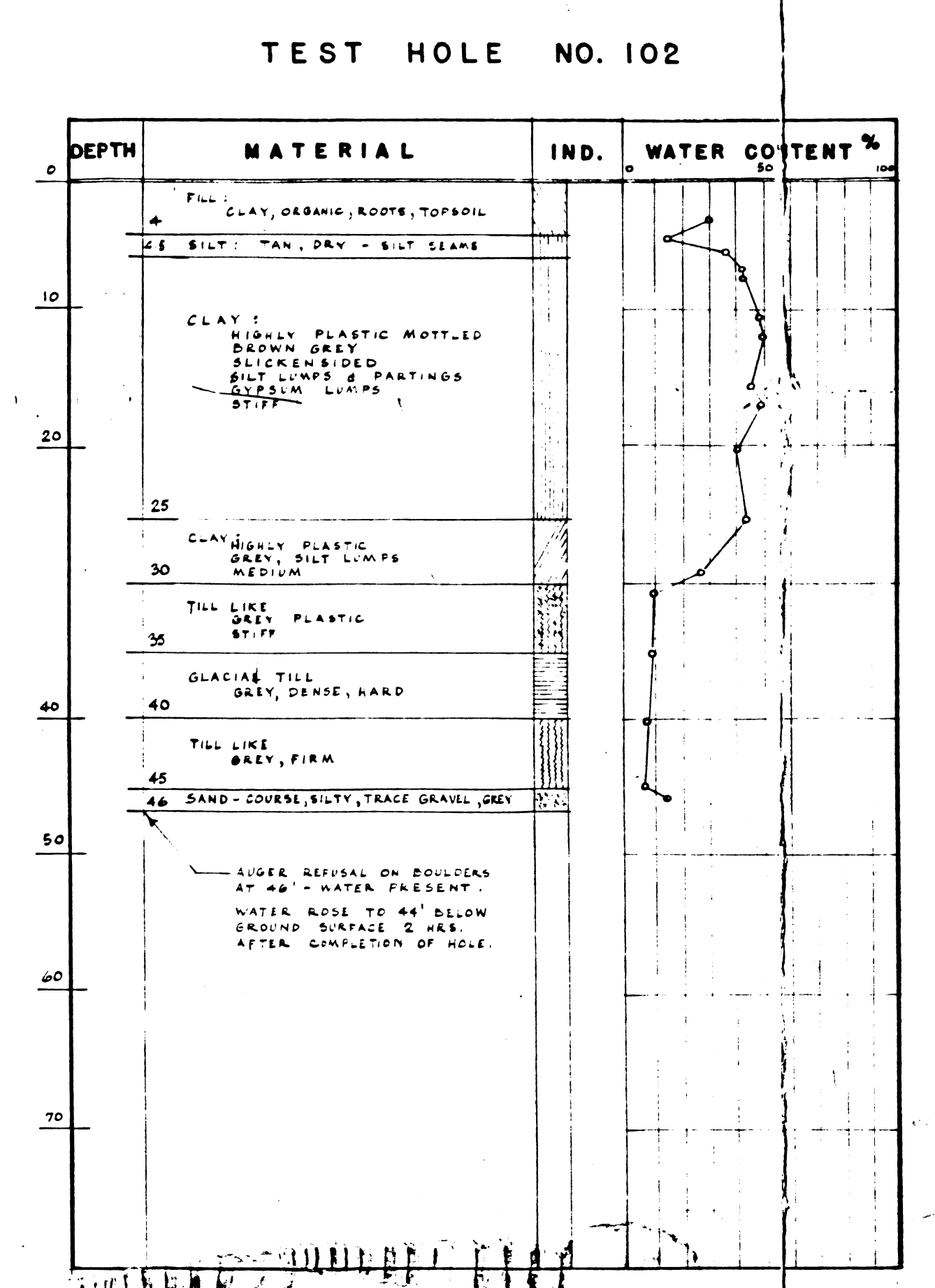
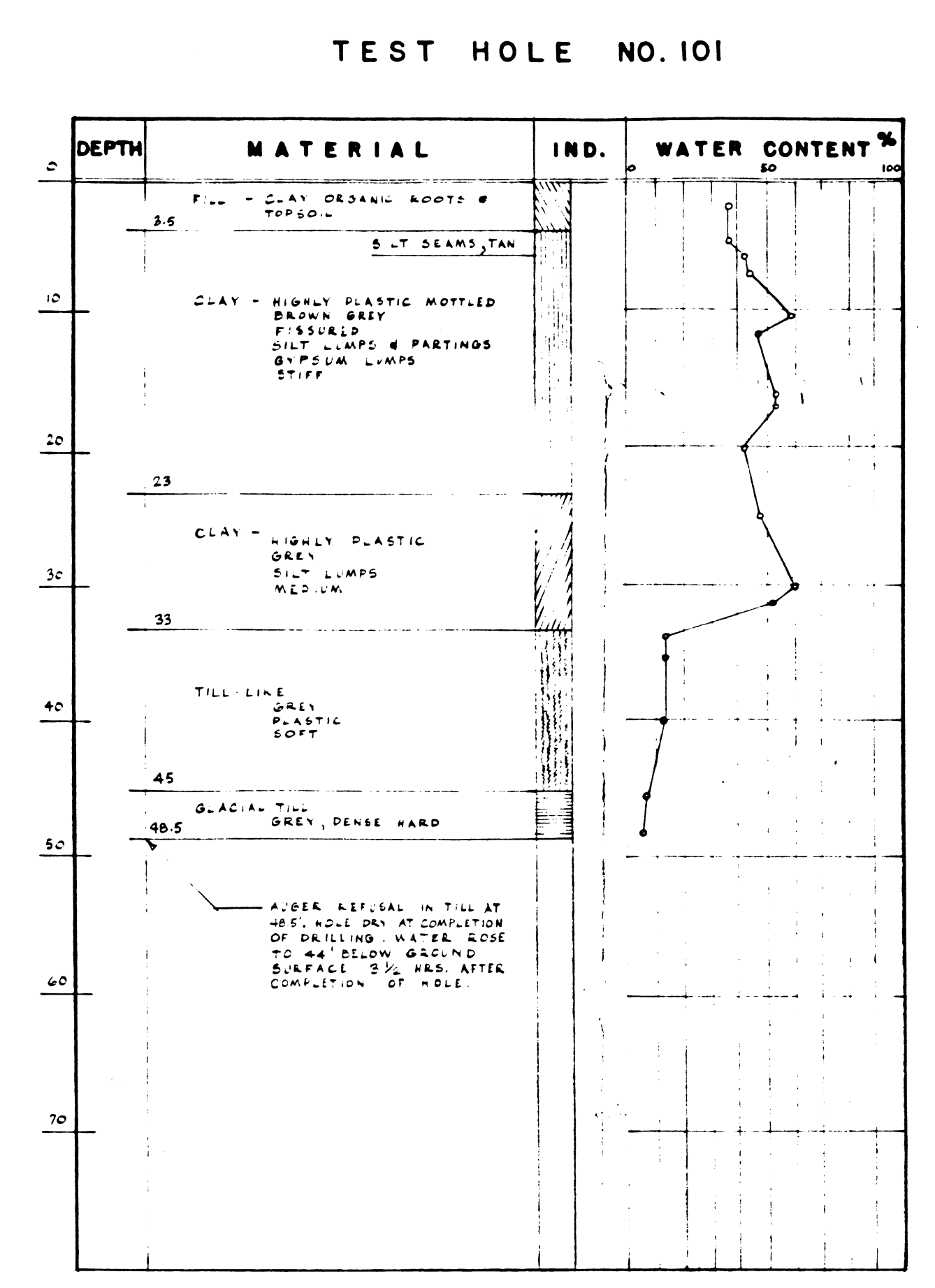
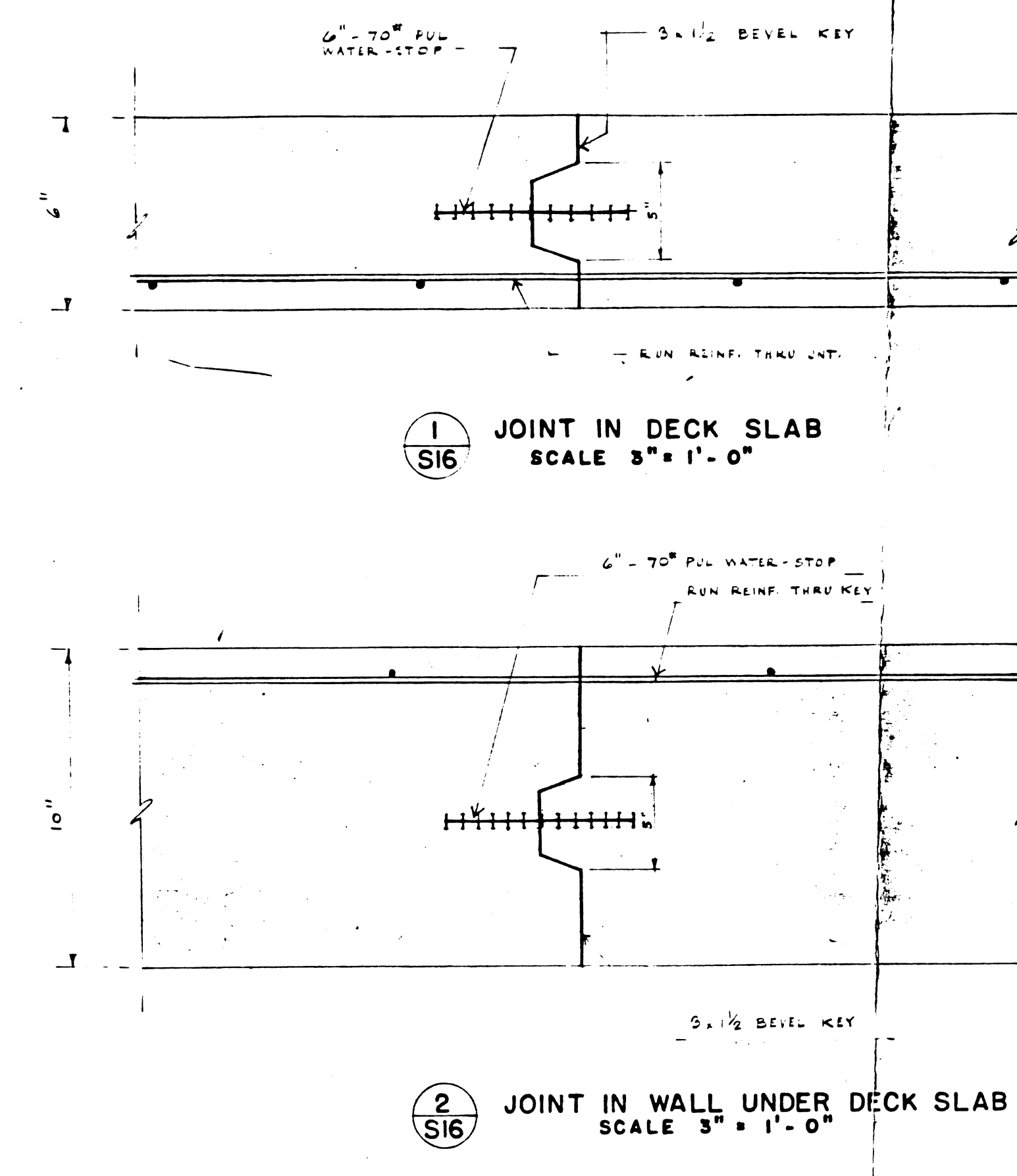


BEAMS		BARS IN BOTTOM		BARS IN TOP		NOTES	
TYPE	NO.	TYPE	NO.	TYPE	NO.	TYPE	NO.
BEAM	SIZE	TYPE	NO.	TYPE	NO.	TYPE	NO.
MECHANICAL							
P.1	12x14	C	2	M	10	10	10
P.2	10x12	C	2	M	10	10	10
P.3	14x18	C	2	M	10	10	10
P.4	12x14	C	2	M	10	10	10
P.5	10x12	C	2	M	10	10	10
P.6	12x14	C	2	M	10	10	10
P.7	14x18	C	2	M	10	10	10
P.8	10x12	C	2	M	10	10	10
P.9	12x14	C	2	M	10	10	10
P.10	10x12	C	2	M	10	10	10
POOL DECK LEVEL BEAMS ELEV. 100'-0"							
101	12x14	C	2	M	10	10	10
102	12x14	C	2	M	10	10	10
103	12x14	C	2	M	10	10	10
104	12x14	C	2	M	10	10	10
105	12x14	C	2	M	10	10	10
106	12x14	C	2	M	10	10	10
107	12x14	C	2	M	10	10	10
108	12x14	C	2	M	10	10	10
109	12x14	C	2	M	10	10	10
110	12x14	C	2	M	10	10	10
CONCOURSE LEVEL BEAMS ELEV. 110'-0"							
C.1	12x14	C	2	M	10	10	10
C.2	12x14	C	2	M	10	10	10
C.3	12x14	C	2	M	10	10	10
C.4	12x14	C	2	M	10	10	10
C.5	12x14	C	2	M	10	10	10
C.6	12x14	C	2	M	10	10	10
C.7	12x14	C	2	M	10	10	10
C.8	12x14	C	2	M	10	10	10
C.9	12x14	C	2	M	10	10	10
C.10	12x14	C	2	M	10	10	10
C.11	12x14	C	2	M	10	10	10
C.12	12x14	C	2	M	10	10	10
C.13	12x14	C	2	M	10	10	10
C.14	12x14	C	2	M	10	10	10
C.15	12x14	C	2	M	10	10	10
C.16	12x14	C	2	M	10	10	10
C.17	12x14	C	2	M	10	10	10
C.18	12x14	C	2	M	10	10	10
C.19	12x14	C	2	M	10	10	10
C.20	12x14	C	2	M	10	10	10
C.21	12x14	C	2	M	10	10	10
C.22	12x14	C	2	M	10	10	10
C.23	12x14	C	2	M	10	10	10
C.24	12x14	C	2	M	10	10	10
C.25	12x14	C	2	M	10	10	10
C.26	12x14	C	2	M	10	10	10
C.27	12x14	C	2	M	10	10	10
C.28	12x14	C	2	M	10	10	10
C.29	12x14	C	2	M	10	10	10
C.30	12x14	C	2	M	10	10	10
C.31	12x14	C	2	M	10	10	10
C.32	12x14	C	2	M	10	10	10
C.33	12x14	C	2	M	10	10	10
C.34	12x14	C	2	M	10	10	10
C.35	12x14	C	2	M	10	10	10
C.36	12x14	C	2	M	10	10	10
C.37	12x14	C	2	M	10	10	10
C.38	12x14	C	2	M	10	10	10
C.39	12x14	C	2	M	10	10	10
C.40	12x14	C	2	M	10	10	10
C.41	12x14	C	2	M	10	10	10
C.42	12x14	C	2	M	10	10	10
C.43	12x14	C	2	M	10	10	10
C.44	12x14	C	2	M	10	10	10
C.45	12x14	C	2	M	10	10	10
C.46	12x14	C	2	M	10	10	10
C.47	12x14	C	2	M	10	10	10
C.48	12x14	C	2	M	10	10	10
C.49	12x14	C	2	M	10	10	10
C.50	12x14	C	2	M	10	10	10
C.51	12x14	C	2	M	10	10	10
C.52	12x14	C	2	M	10	10	10
C.53	12x14	C	2	M	10	10	10
C.54	12x14	C	2	M	10	10	10
C.55	12x14	C	2	M	10	10	10
C.56	12x14	C	2	M	10	10	10
C.57	12x14	C	2	M	10	10	10
C.58	12x14	C	2	M	10	10	10
C.59	12x14	C	2	M	10	10	10
C.60	12x14	C	2	M	10	10	10
C.61	12x14	C	2	M	10	10	10
C.62	12x14	C	2	M	10	10	10
C.63	12x14	C	2	M	10	10	10
C.64	12x14	C	2	M	10	10	10
C.65	12x14	C	2	M	10	10	10
C.66	12x14	C	2	M	10	10	10
C.67	12x14	C	2	M	10	10	10
C.68	12x14	C	2	M	10	10	10
C.69	12x14	C	2	M	10	10	10
C.70	12x14	C	2	M	10	10	10
C.71	12x14	C	2	M	10	10	10
C.72	12x14	C	2	M	10	10	10
C.73	12x14	C	2	M	10	10	10
C.74	12x14	C	2	M	10	10	10
C.75	12x14	C	2	M	10	10	10
C.76	12x14	C	2	M	10	10	10
C.77	12x14	C	2	M	10	10	10
C.78	12x14	C	2	M	10	10	10
C.79	12x14	C	2	M	10	10	10
C.80	12x14	C	2	M	10	10	10
C.81	12x14	C	2	M	10	10	10
C.82	12x14	C	2	M	10	10	10
C.83	12x14	C	2	M	10	10	10
C.84	12x14	C	2	M	10	10	10
C.85	12x14	C	2	M	10	10	10
C.86	12x14	C	2	M	10	10	10
C.87	12x14	C	2	M	10	10	10
C.88	12x14	C	2	M	10	10	10
C.89	12x14	C	2	M	10	10	10
C.90	12x14	C	2	M	10	10	10
C.91	12x14	C	2	M	10	10	10
C.92	12x14	C	2	M	10	10	10
C.93	12x14	C	2	M	10	10	10
C.94	12x14	C	2	M	10	10	10
C.95	12x14	C	2	M	10	10	10
C.96	12x14	C	2	M	10	10	10
C.97	12x14	C	2	M	10	10	10
C.98	12x14	C	2	M	10	10	10
C.99	12x14	C	2	M	10	10	10
C.100	12x14	C	2	M	10	10	10



B-14 FILE
RETURN TO CIVIC PROPERTIES BUILDING INVENTORY.
3 101 16

NO.	REV.	DESCRIPTION	DATE	CHK'D

DRAWN BY: G.B.L. R.R.L.
CHECKED BY: [Signature]
DATE: MARCH 28, 1968

SMITH CARTER SEARLE ASSOCIATES
ARCHITECTS AND CONSULTING ENGINEERS
WINNIPEG BRANDON FORT ARTHUR TORONTO



PAN-AMERICAN GAMES
SWIMMING FACILITY
WINNIPEG, MANITOBA

SHEET TITLE: SCHEDULES
SCALE: [Blank]
FILE NUMBER: 65080
SHEET NUMBER: S16

25 Poseidon Bay
Schedules
Pan Am Swimming Facility
1965