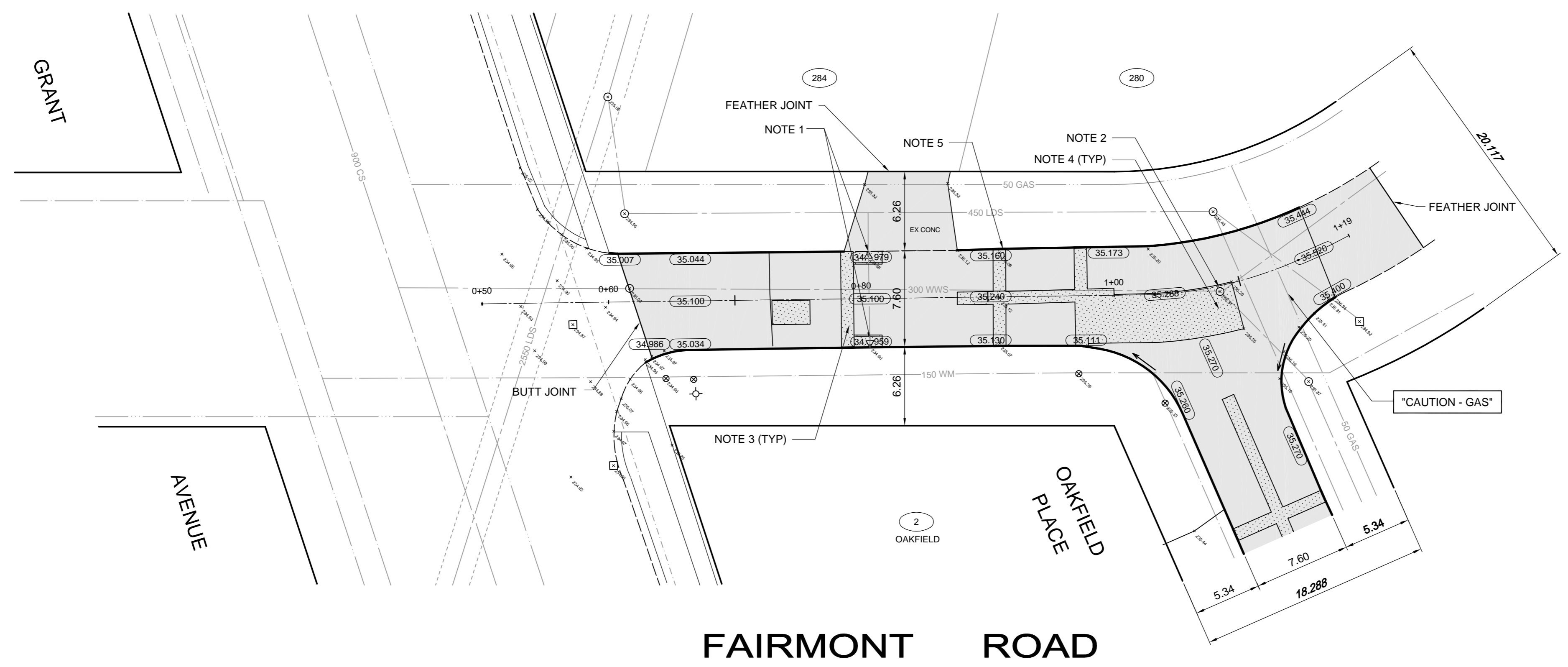
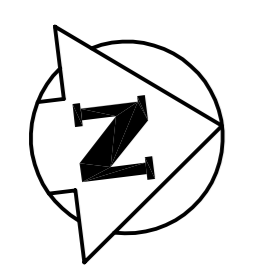


- CONSTRUCTION NOTES:**
1. ADJUST DRAINAGE INLET TO GRADE.
 2. ADJUST MANHOLE TO GRADE.
 3. PARTIAL SLAB PATCHES (150 CONCRETE).
 4. SLAB REPLACEMENT (150 REINFORCED CONCRETE).
 5. MILL ALL EXISTING CURB AND REPLACE WITH 150mm BARRIER CURB (150mm REVEAL).
 6. CURB HEIGHT REDUCED TO 40mm AT APPROACHES.
 7. ALL NEW CONCRETE PAVEMENT TO BE EARLY OPENING 72 HOUR (NOT INCLUDING SIDEWALK RENEWAL).

- GENERAL NOTES:**
- A. PAVEMENT DIMENSIONS ARE TO BACK OF CURB.
 - B. PROPOSED ALIGNMENT LINE IS CENTRE OF EXISTING RIGHT-OF-WAY.
 - C. CHAINAGE IS ALONG CENTRELINE OF FAIRMONT ROAD RIGHT-OF-WAY.



WARNING
IF POWER EQUIPMENT OR EXPLOSIVES ARE TO BE USED FOR EXCAVATION ON THIS PROJECT THE CONTRACTOR MUST:
1. NOTIFY THE GAS COMPANY OF THE PROPOSED LOCATION OF EXCAVATION.
2. TAKE PRECAUTION TO AVOID DAMAGE TO GAS COMPANY INSTALLATIONS. SEE PROVINCIAL REGULATION 149/92 FOR DETAILS.

EXISTING	LEGEND-PLAN	PROPOSED	EXISTING	LEGEND-PLAN	PROPOSED	EXISTING	LEGEND-PLAN	PROPOSED
150 WM	WATERMAIN	150 WM	SWALE	→	→	RIGHT-OF-WAY		
400 FM	FEEDERMAIN	400 FM	MANHOLE	○	○	GAS		
300 LDS	LAND DRAINAGE SEWER	300 LDS	CATCHBASIN	□	□	HYDRO		
250 WWS	WASTEWATER SEWER	250 WWS	HYDRO BOX	▣	▣	MTS		
300 CS	COMBINED SEWER	300 CS	HYDRO POLE	●	●	DETECTABLE WARNING TILE	□	
200 FCM	FORCEMAIN	200 FCM	LIGHT STANDARD	⦿	⦿	ELEVATION	(32.000)	
	JUNCTIONS	↔	ANCHOR	×	×	SIDEWALK	▨	
◇	HYDRANT	◇	TREE	○	○	CURB	▬	
⊕	VALVE	⊕	SURVEY BAR	⊕	⊕	ASPHALT	▨	
⊕	CURB STOP	⊕	SIGNAL CONTROLLER	⊕	⊕	CONCRETE	▨	
	LEGEND-PLAN	PROPOSED	LEGEND-PLAN	PROPOSED	EXISTING	LEGEND-PLAN	PROPOSED	

LOCATION APPROVED UNDERGROUND STRUCTURES
SUPPLY U/G STRUCTURES COMMITTEE DATE
NOTE: LOCATION OF UNDERGROUND STRUCTURES AS SHOWN ARE BASED ON THE BEST INFORMATION AVAILABLE. BUT NO GUARANTEE IS GIVEN THAT ALL EXISTING UTILITIES ARE SHOWN OR THAT THE GIVEN LOCATIONS ARE EXACT. CONFIRMATION OF EXISTENCE AND EXACT LOCATION OF ALL SERVICES MUST BE OBTAINED FROM THE INDIVIDUAL UTILITIES BEFORE PROCEEDING WITH CONSTRUCTION.

B.M. ELEV.	NO.	REVISIONS	DATE	BY
	01	ISSUED FOR TENDER	13.08.28	SV
	00	ISSUED FOR APPROVAL	13.08.06	SV

TETRA TECH

DESIGNED BY SV
DRAWN BY GMD

CHECKED BY
APPROVED BY

HOR. SCALE: 1:250
VERTICAL: 1:10

DATE 13.07.10

RELEASED FOR CONSTRUCTION

PRELIMINARY DRAWING
NOT TO BE USED FOR CONSTRUCTION
CONSULTANT DRAWING NO. 1300070100-DWG-C1007

THE CITY OF WINNIPEG
PUBLIC WORKS DEPARTMENT

2013 LOCAL STREET RENEWAL PROGRAM
PAVEMENT REHABILITATION

FAIRMONT ROAD
GRANT AVENUE TO
OAKFIELD PLACE

CITY DRAWING NUMBER
SHEET 7 OF 10
C1007

DATE: April 30, 2014