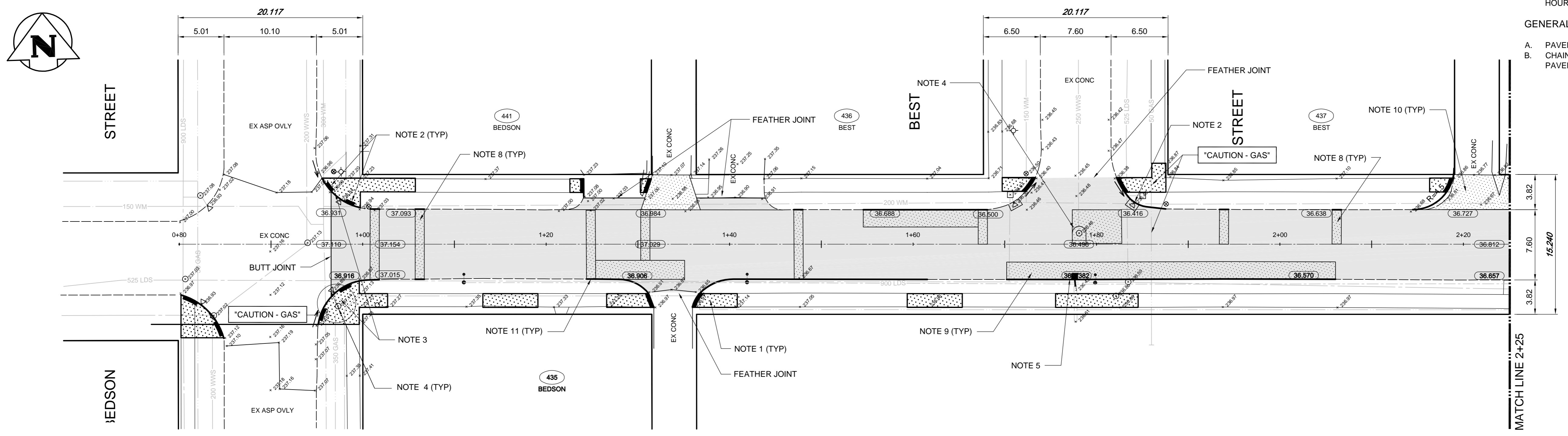


- CONSTRUCTION NOTES:**
1. RENEW EXISTING SIDEWALK WITH 100mm CONCRETE.
  2. ADJUST DRAINAGE INLET.
  3. INSTALL NEW RAMP CURB.
  4. ADJUST MANHOLE TO GRADE.
  5. REPLACE CURB INLET WITH NEW CATCH PIT (SD-023) AND CONNECT TO EXISTING CULVERT.
  6. REMOVE AND REPLACE EXISTING CATCHBASIN (SD-024).
  7. ADJUST CATCHBASIN.
  8. PARTIAL SLAB PATCHES (150 CONCRETE)
  9. SLAB REPLACEMENT (150 REINFORCED CONCRETE).
  10. REMOVE EXISTING CONCRETE PAVEMENT AND CONSTRUCT NEW 150mm REINFORCED CONCRETE PAVEMENT.
  11. RENEW 150mm BARRIER CURB AND GUTTER.
  12. ALL NEW CONCRETE PAVEMENT TO BE EARLY OPENING 72 HOUR (NOT INCLUDING SIDEWALK RENEWAL).

- GENERAL NOTES:**
- A. PAVEMENT DIMENSIONS ARE TO BACK OF CURB.
  - B. CHAINAGE IS ALONG CENTRELINE OF ALLARD AVENUE PAVEMENT.



**WARNING**  
IF POWER EQUIPMENT OR EXPLOSIVES ARE TO BE USED FOR EXCAVATION ON THIS PROJECT THE CONTRACTOR MUST:  
1. NOTIFY THE GAS COMPANY OF THE PROPOSED LOCATION OF EXCAVATION.  
2. TAKE PRECAUTION TO AVOID DAMAGE TO GAS COMPANY INSTALLATIONS. SEE PROVINCIAL REGULATION 140/92 FOR DETAILS.

**APEGM**  
Certificate of Authorization  
**TETRA TECH WEI Inc.**  
No. 5313 Date: April 30, 2014

EXISTING	LEGEND-PLAN	PROPOSED	EXISTING	LEGEND-PLAN	PROPOSED	EXISTING	LEGEND-PLAN	PROPOSED
150 WM	WATERMAIN	150 WM	SWALE	MANHOLE	RIGHT-OF-WAY			
400 FM	FEEDERMAIN	400 FM		CATCHBASIN				
300 LDS	LAND DRAINAGE SEWER	300 LDS		HYDRO BOX				
250 WWS	WASTEWATER SEWER	250 WWS		HYDRO POLE				
300 CS	COMBINED SEWER	300 CS		LIGHT STANDARD				
200 FCM	FORCEMAIN	200 FCM		ANCHOR				
	JUNCTIONS			TREE				
	HYDRANT			SURVEY BAR				
	VALVE			SIGNAL CONTROLLER				
	CURB STOP							
	LEGEND-PLAN							

**LOCATION APPROVED UNDERGROUND STRUCTURES**  
SUPV. U/G STRUCTURES COMMITTEE DATE  
NOTE: LOCATION OF UNDERGROUND STRUCTURES AS SHOWN ARE BASED ON THE BEST INFORMATION AVAILABLE. BUT NO GUARANTEE IS GIVEN THAT ALL EXISTING UTILITIES ARE SHOWN OR THAT THE GIVEN LOCATIONS ARE EXACT. CONFIRMATION OF EXISTENCE AND EXACT LOCATION OF ALL SERVICES MUST BE OBTAINED FROM THE INDIVIDUAL UTILITIES BEFORE PROCEEDING WITH CONSTRUCTION.

B.M. ELEV.	NO.	REVISIONS	DATE	BY
	02	ISSUED FOR ADDENDUM No. 2	13.09.11	SV
	01	ISSUED FOR TENDER	13.08.28	SV
	00	ISSUED FOR APPROVAL	13.08.06	SV

**TETRA TECH**  
DESIGNED BY SV  
DRAWN BY GMD  
CHECKED BY  
APPROVED BY  
HOR. SCALE: 1 : 250  
VERTICAL: 1 : 10  
DATE 13.07.10

**PRELIMINARY DRAWING**  
NOT TO BE USED FOR CONSTRUCTION  
CONSULTANT DRAWING NO. 1300070100-DWG-C1004

**THE CITY OF WINNIPEG**  
PUBLIC WORKS DEPARTMENT  
2013 LOCAL STREET RENEWAL PROGRAM  
PAVEMENT REHABILITATION  
ALLARD AVENUE  
BEDSON STREET TO  
37m EAST OF BEST STREET  
CITY DRAWING NUMBER  
SHEET 4 OF 10  
C1004