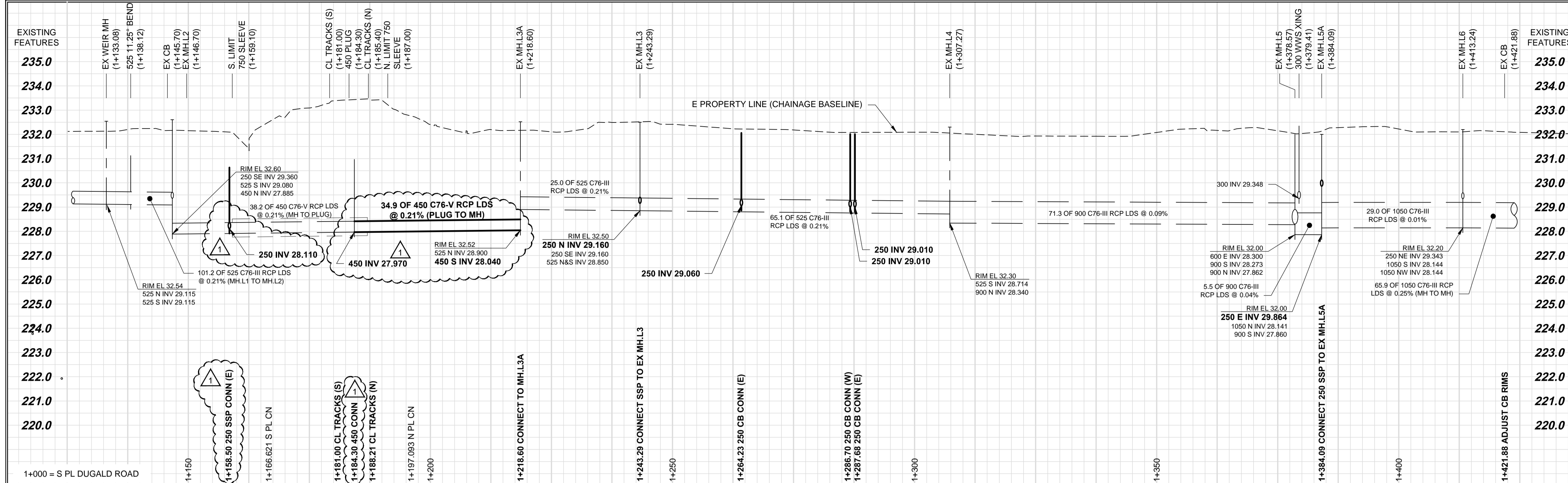


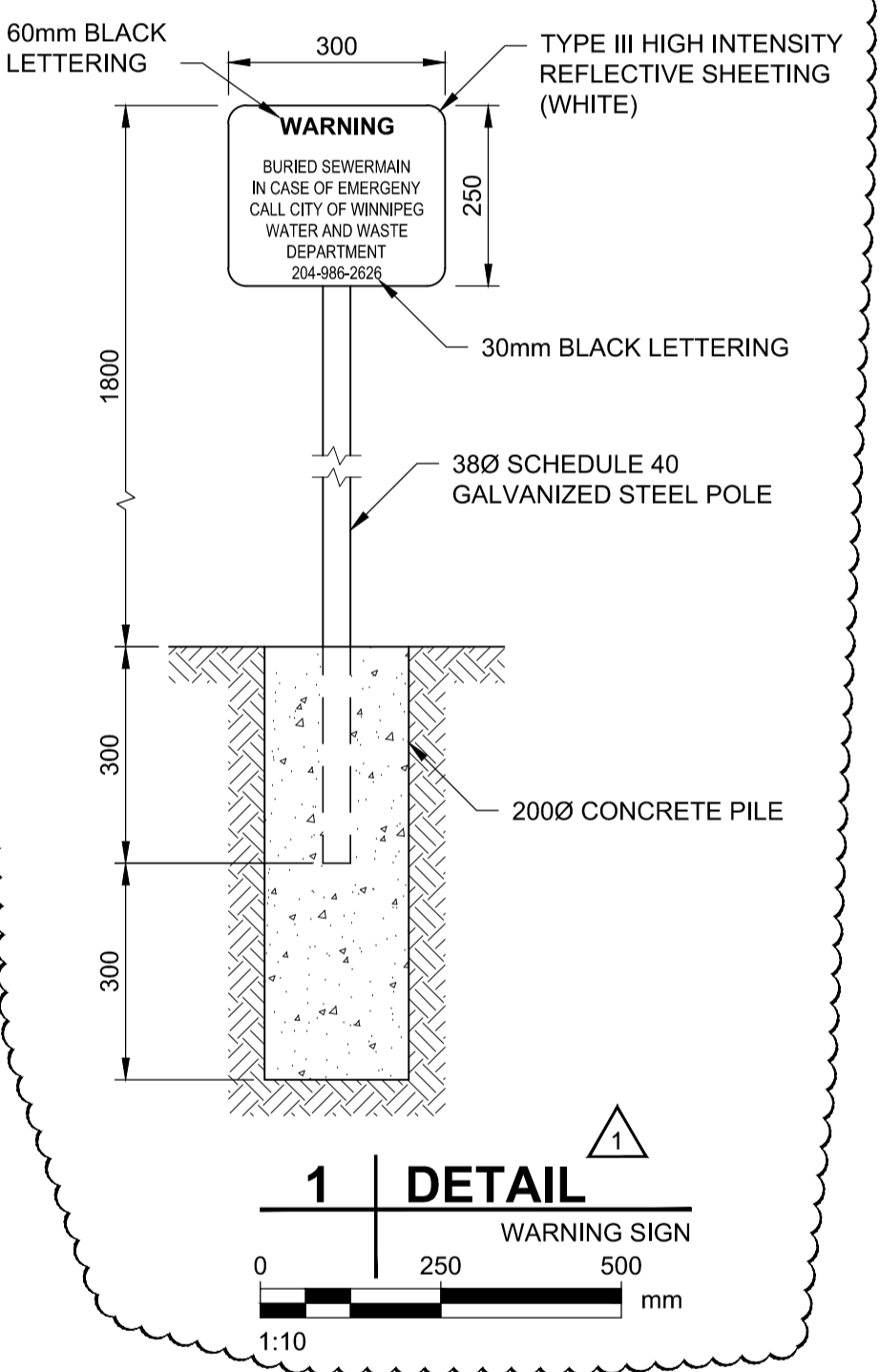
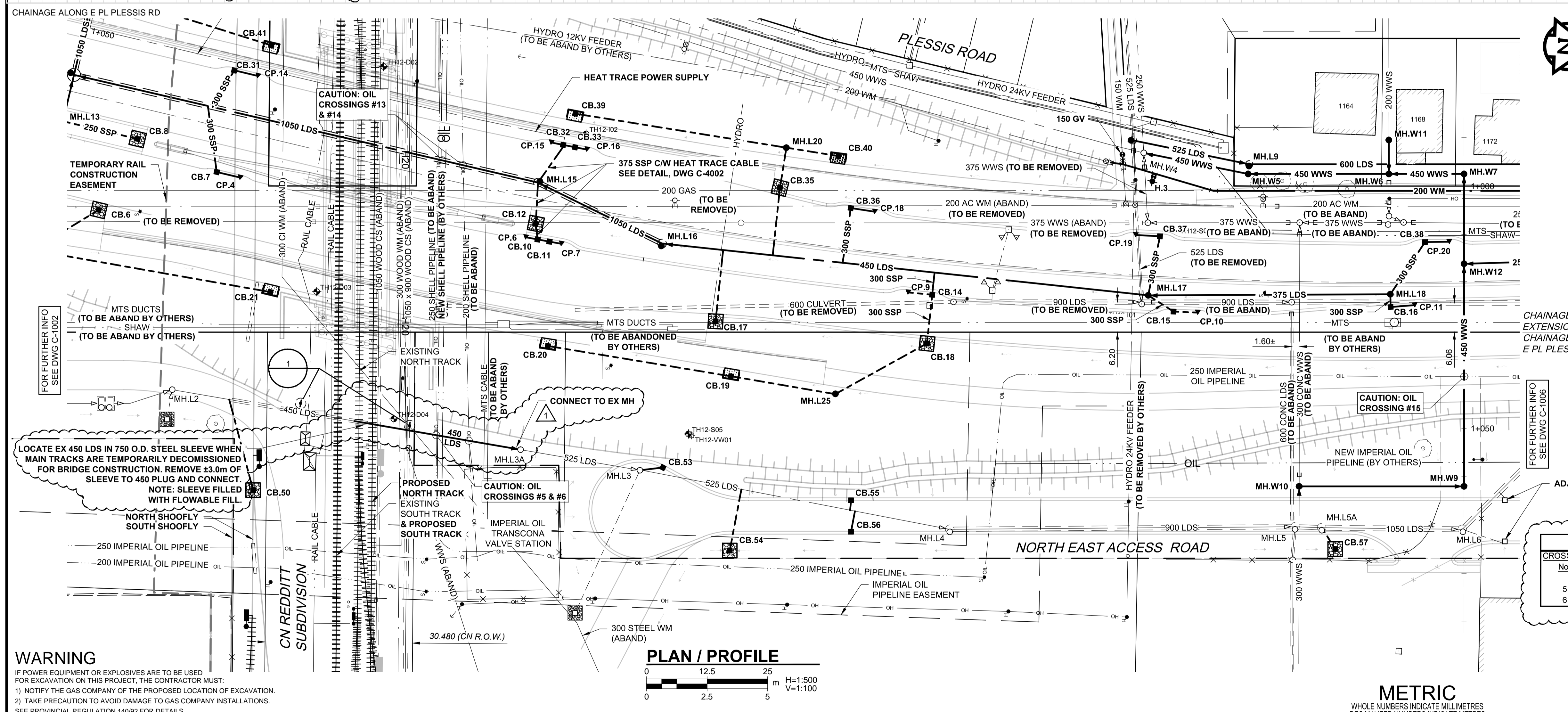
AT - 841694
2014-01-24
AECOM REVIEW DRAFT CHK
AECOM STANDARDS



RAIL CROSSING NOTES:

RAILWAY MILEAGE AND SUBDIVISION:	MAIN LINE - REDDITT SUBDIVISION - MILE 246.61
MUNICIPAL DESCRIPTION OF ADJACENT PROPERTIES:	PLESSIS ROAD CITY OF WINNIPEG, WATER AND WASTE DEPARTMENT
NAME OF PIPELINE OWNER:	PLESSIS ROAD CITY OF WINNIPEG, WATER AND WASTE DEPARTMENT
CONTENTS TO BE HANDLED:	LAND DRAINAGE SEWER
MAXIMUM OPERATING PRESSURE:	NON-SURCHARGE GRAVITY
MAXIMUM SURGE AND TEST PRESSURE:	NA
MAXIMUM OPERATING TEMPERATURE:	ATMOSPHERIC
MINIMUM OPERATING TEMPERATURE:	NA
PIPING MATERIALS:	CARRIER 450 mm
NOMINAL DIAMETER:	623 mm
OUTSIDE DIAMETER:	REINFORCED CONCRETE
MATERIAL:	ASTM C76 CLASS 5
SPECIFICATION AND GRADE:	
WALL THICKNESS:	83 mm
TYPE OF JOINT:	RUBBER GASKET BELL AND SPIGOT
COATING:	NA
LOCATION OF SHUT OFF VALVES:	NA
METHOD OF INSTALLATION:	TRENCHLESS - CONCRETE PIPE TO BE JACKED WITH NO SOIL REMOVAL AHEAD OF PIPE
VENTS:	NA
SEALS:	HEIGHT ABOVE GROUND: NA BOTH ENDS: NA TYPE: NA
BURY:	BASE OF RAIL TO TOP OF CARRIER: 4.8 m NOT BENEATH TRACKS: 4.5 m ROADWAY DITCHES: 3.5 m BASE OF RAIL TO BOTTOM OF JACKING/RECEIVING PITS: 5.8 m
EXTENT OF CASING MEASURED PERPENDICULAR TO CENTERLINE OF TRACK:	NA
ANGLE OF PIPE / TRACK CROSSING:	80°40'
DIRECTION OF FLOW:	NA
CENTERLINE OF TRACK TO FACE OF JACKING/RECEIVING PITS:	12.0m
TYPE, SIZE, AND SPACING OF INSULATORS OR SUPPORTS:	NA
CATHODIC PROTECTION:	NA
GEOTECHNICAL BOREHOLES:	SEE PROFILE
SOIL TYPE:	CLAY/SILT
BASE OF RAIL TO GROUND WATER:	10.4m - 11.5m

TO BE CONSTRUCTED AND MAINTAINED IN ACCORDANCE WITH TC E-10



SHELL OIL PIPELINE CROSSINGS

CROSSING No.	DESCRIPTION	ELEVATIONS	CLEARANCE
5	450 LDS	28.53 (OBVERT)	2.82
6	250 PIPELINE	31.35 (INVERT)	2.47

WARNING
IF POWER EQUIPMENT OR EXPLOSIVES ARE TO BE USED FOR EXCAVATION ON THIS PROJECT, THE CONTRACTOR MUST:
1) NOTIFY THE GAS COMPANY OF THE PROPOSED LOCATION OF EXCAVATION.
2) TAKE PRECAUTION TO AVOID DAMAGE TO GAS COMPANY INSTALLATIONS.
SEE PROVINCIAL REGULATION 140/92 FOR DETAILS



METRIC
WHOLE NUMBERS INDICATE MILLIMETRES
DECIMALIZED NUMBERS INDICATE METRES

150 WM	WATERMAIN	150 WM	PIPE ABANDONMENTS	150 WM	WATERMAIN	150 WM
○	HYDRANT	+	SURVEY BAR	+	HYDRANT	+
○	VALVE	+	CURB STOP	+	VALVE	+
○	LAND DRAINAGE SEWER	+	REDUCER	+	LAND DRAINAGE SEWER	+
○	WASTE WATER SEWER	+	COUPLING	+	WASTE WATER SEWER	+
○	SEWER SERVICE PIPE	+	ANODE	+	PAVEMENT CROWN	+
○	DRAINAGE CONNECTION PIPE	+	HYDRO	+	N/W PROPERTY LINE	+
○	MANHOLE	+	MTS	+	S/E PROPERTY LINE	+
○	CATCH BASIN	+	GAS	+	N/W GUTTER	+
○	CURB INLET	+	TESTHOLE	+	S/E GUTTER	+
○	CULVERT	+	LAMP STANDARD	+		
○	EXISTING	+	LEGEND - PLAN	+	EXISTING	+
○	LEGEND - PLAN	+	NEW	+	LEGEND - PROFILE	+
○	NEW	+	EXISTING	+	NEW	+

LOCATION APPROVED UNDERGROUND STRUCTURES

NO.	REVISIONS	DATE	BY	DATE
1	ISSUED FOR ADDENDUM	2014/01/22	ADL	
0	ISSUED FOR TENDER	2013/11/22	KMB	

NOTE:
LOCATION OF UNDERGROUND STRUCTURES AS SHOWN ARE BASED ON THE BEST INFORMATION AVAILABLE, BUT NO GUARANTEE IS GIVEN THAT ALL EXISTING UTILITIES ARE SHOWN OR THAT THE GIVEN LOCATIONS ARE EXACT. CONFIRMATION OF EXISTENCE AND EXACT LOCATION OF ALL SERVICES MUST BE OBTAINED FROM THE INDIVIDUAL UTILITIES BEFORE PROCEEDING WITH CONSTRUCTION.

B.M. ELEV.

NO.	REVISIONS	DATE	BY	DATE
1	ISSUED FOR ADDENDUM	2014/01/22	ADL	
0	ISSUED FOR TENDER	2013/11/22	KMB	

AECOM

DESIGNED BY: MPG
DRAWN BY: KMB
HOR. SCALE: AS NOTED
VERTICAL: AS NOTED

CHECKED BY:
APPROVED BY:
RELEASED FOR CONSTRUCTION BY:

ENGINEER'S SEAL

CONSULTANT DRAWING NO. 60273041-SHT-01-CON3-C-1005

THE CITY OF WINNIPEG PUBLIC WORKS DEPARTMENT

PLESSIS ROAD TWINNING AND GRADE SEPARATION AT CN REDDITT SUBDIVISION CONTRACT 3

CITY DRAWING NUMBER U238-2014-2305
SHEET 05 OF 15

PLESSIS ROAD / NORTH EAST ACCESS ROAD - LDS
105m NORTH OF DUGALD ROAD TO 180m SOUTH OF KERNAGHAN AVENUE

C-1005