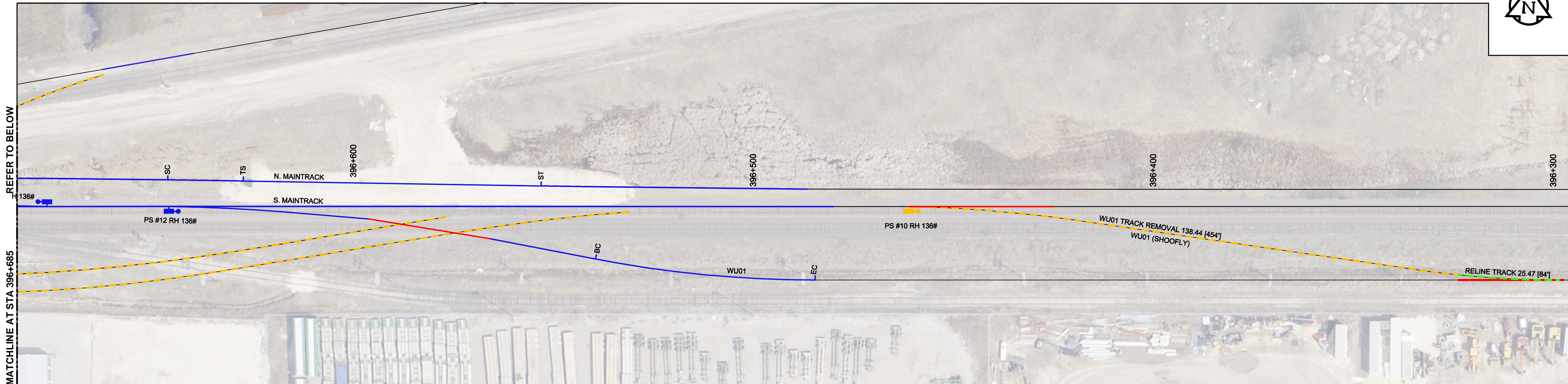
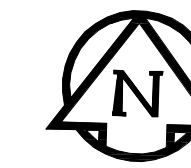
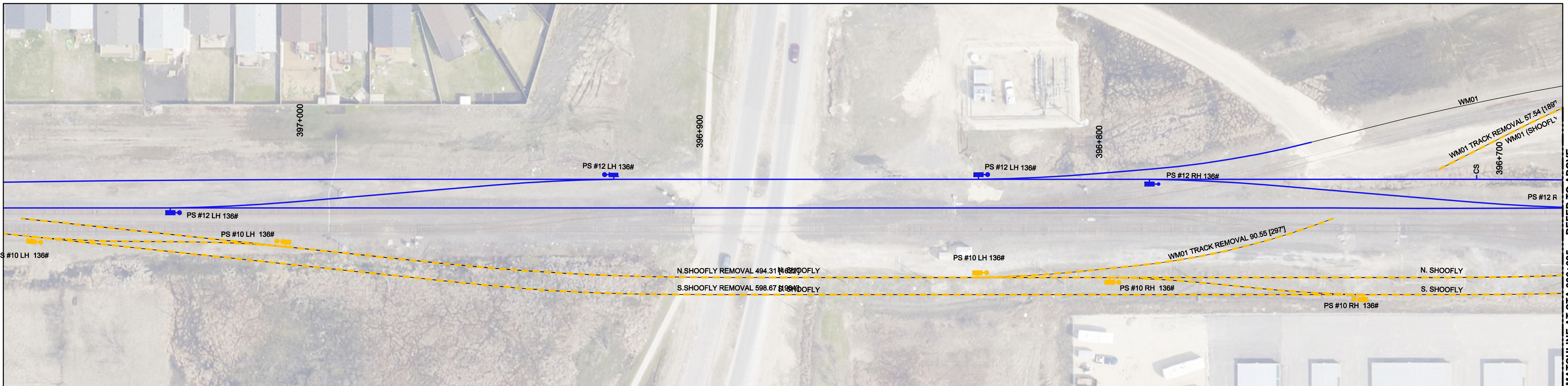


EAST SIDE OF STAGE E



WEST SIDE OF STAGE E



CONSTRUCTION STAGING

STAGE E

- i. REMOVE PORTION OF SHOOFLY AT WU01.
- ii. BUILD TRACK TO CONNECT GAP ON WU01 AT PREVIOUS SHOOFLY LOCATION.
  - a. BALLAST AND SURFACE.
- iii. CUT OVER WU01 CONNECTION
  - a. CN BLOCK REQUIRED.
  - b. BALLAST AND SURFACE.
- iv. REMOVE REMAINING TEMPORARY TRACK AND SWITCHES WITHIN EXTENTS OF PROJECT.
  - a. BALLAST TO BE HAULED OFF SITE.
  - b. DISMANTLE AND STOCKPILE REMOVED TRACK TO AREA DESIGNATED BY CN.
- v. WELD TRACK AS REQUIRED.
- vi. CLEAN UP SITE.

GENERAL NOTES:

1. ALL DIMENSIONS ARE METRIC UNLESS NOTED OTHERWISE.
2. ALL PROPERTY LINES ARE PROVIDED FOR INFORMATION PURPOSES ONLY.
3. ALL NEW TURNOUTS COMPLETE WITH TEMPORARY SWITCH STAND.
4. ALL TRACK PANELS COMPLETE AND 39' LONG.
5. ALL LENGTHS SHOWN ARE APPROXIMATE, CONFIRM PRIOR TO CONDUCTING WORK.

PLAN



**APEGM**  
 Certificate of Authorization  
 AECOM Canada Ltd.  
 No. 4671 Date: 2014/01/22  
 BID OPPORTUNITY NO. 712-2013

LEGEND

- REMOVED TRACK: Yellow dashed line
- RELINE TRACK: Green dashed line
- PROPOSED TRACK: Red solid line
- CONSTRUCTED TRACK: Blue solid line
- PROPOSED PS: Red circle with dot
- EXISTING PS: Black circle with dot
- NEW PS: Blue circle with dot
- REMOVE PS: Yellow circle with dot
- PROPOSED ACCESS ROAD: Red dashed line
- EDGE ACCESS ROAD PLANKS: Black dashed line

LOCATION APPROVED UNDERGROUND STRUCTURES

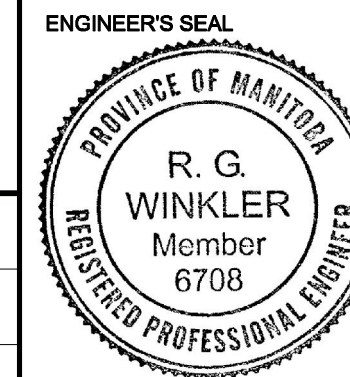
SUPV. U/G STRUCTURES COMMITTEE DATE

NOTE:  
 LOCATION OF UNDERGROUND STRUCTURES AS SHOWN ARE BASED ON THE BEST INFORMATION AVAILABLE. BUT NO GUARANTEE IS GIVEN THAT ALL EXISTING UTILITIES ARE SHOWN OR THAT THE GIVEN LOCATIONS ARE EXACT. CONFIRMATION OF EXISTENCE AND EXACT LOCATION OF ALL SERVICES MUST BE OBTAINED FROM THE INDIVIDUAL UTILITIES BEFORE PROCEEDING WITH CONSTRUCTION.

B.M. ELEV.	NO.	REVISIONS	DATE	BY
	1	Issued For Addendum	14/01/22	RCP
	0	Issued For Addendum	13/12/10	RCP



DESIGNED BY	BRP	CHECKED BY	BJM
DRAWN BY	WD	APPROVED BY	RCP
HOR. SCALE:	1:500	RELEASED FOR CONSTRUCTION BY:	
VERTICAL:	1:50	DATE	2014/01/22



**THE CITY OF WINNIPEG PUBLIC WORKS DEPARTMENT**

PLESSIS ROAD TWINNING AND GRADE SEPARATION AT CN REDDITT SUBDIVISION CONTRACT 3

CITY DRAWING NUMBER U238-2014-2275  
 SHEET 14 OF 14

SHOOFLY REMOVAL AND FINAL CONFIGURATION STAGING PLAN STAGE E

CR-7105