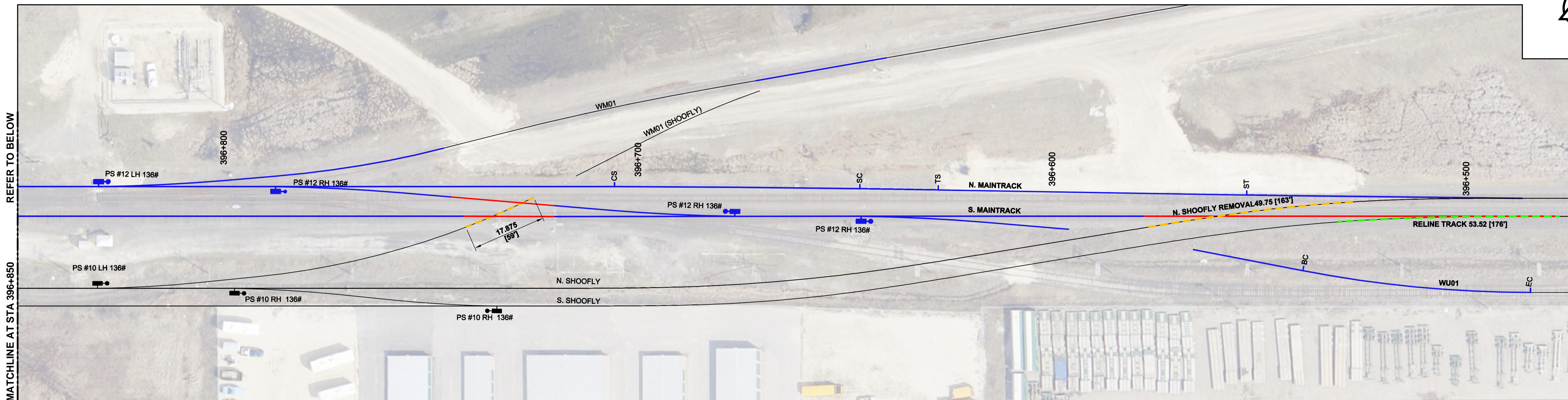
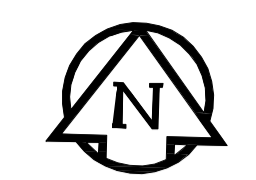
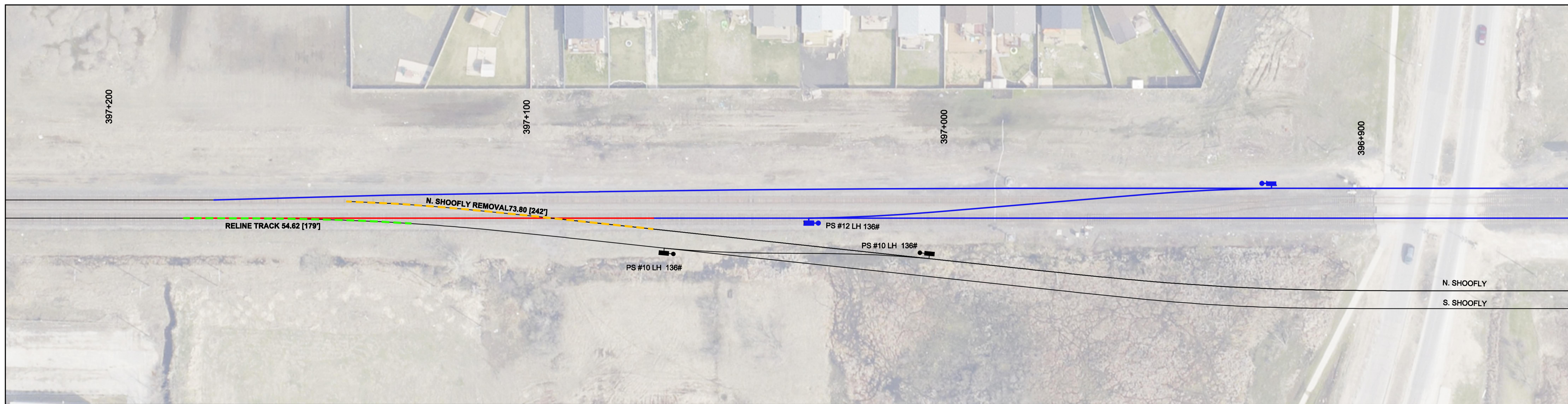


EAST SIDE OF STAGE D



WEST SIDE OF STAGE D



CONSTRUCTION STAGING

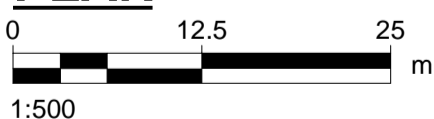
STAGE D

- i. REMOVE SEGMENT OF TEMPORARY WM01.
- ii. REMOVE PORTIONS OF N.SHOOFLY TO FACILITATE WEST AND EAST CUT-OVERS.
- iii. S.MAINTRACK BLOCK REQUIRED TO FACILITATE THE FOLLOWING WORK. N.MAINTRACK TO REMAIN IN SERVICE DURING THIS TIME:
  - a. AT TEMPORARY WM01 LOCATION USING TRACK PANELS:
    - i. CONNECT N.MAINTRACK AND S.MAINTRACK EAST CROSSOVER TURNOUTS.
    - ii. CLOSE GAP IN S.MAINTRACK.
  - b. CUT OVER EAST AND WEST S.MAINTRACK.
- iv. WORK TO DO UPON COMPLETION OF CUT OVERS.
  - a. DISMANTLE AND STOCKPILE REMOVED TRACK TO AREA DESIGNATED BY CN.
  - b. DISTRESS AND WELD TRACK AS REQUIRED.

GENERAL NOTES:

- 1. ALL DIMENSIONS ARE METRIC UNLESS NOTED OTHERWISE.
- 2. ALL PROPERTY LINES ARE PROVIDED FOR INFORMATION PURPOSES ONLY.
- 3. ALL NEW TURNOUTS COMPLETE WITH TEMPORARY SWITCH STAND.
- 4. ALL TRACK PANELS COMPLETE AND 39' LONG.
- 5. ALL LENGTHS SHOWN ARE APPROXIMATE, CONFIRM PRIOR TO CONDUCTING WORK.

PLAN



**APEGM**  
 Certificate of Authorization  
 AECOM Canada Ltd.  
 No. 4671 Date: 2014/01/22

BID OPPORTUNITY NO. 712-2013

LEGEND

- REMOVED TRACK:
- RELINE TRACK:
- PROPOSED TRACK:
- CONSTRUCTED TRACK:
- PROPOSED PS:
- EXISTING PS:
- NEW PS:
- PROPOSED ACCESS ROAD:
- EDGE ACCESS ROAD PLANKS:
- REMOVE PS:

LOCATION APPROVED UNDERGROUND STRUCTURES

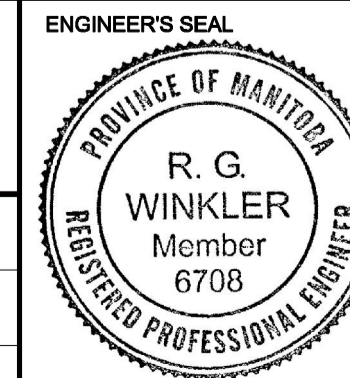
SUPV. U/G STRUCTURES COMMITTEE	DATE

NOTE:  
 LOCATION OF UNDERGROUND STRUCTURES AS SHOWN ARE BASED ON THE BEST INFORMATION AVAILABLE, BUT NO GUARANTEE IS GIVEN THAT ALL EXISTING UTILITIES ARE SHOWN OR THAT THE GIVEN LOCATIONS ARE EXACT. CONFIRMATION OF EXISTENCE AND EXACT LOCATION OF ALL SERVICES MUST BE OBTAINED FROM THE INDIVIDUAL UTILITIES BEFORE PROCEEDING WITH CONSTRUCTION.

B.M. ELEV.	NO.	REVISIONS	DATE	BY
	1	Issued For Addendum	14/01/22	RCP
	0	Issued For Addendum	13/12/10	RCP



DESIGNED BY: BRP	CHECKED BY: BJM
DRAWN BY: WD	APPROVED BY: RCP
HOR. SCALE: 1:500	RELEASED FOR CONSTRUCTION BY:
VERTICAL: 1:50	DATE: 2014/01/22



**THE CITY OF WINNIPEG PUBLIC WORKS DEPARTMENT**

PLESSIS ROAD TWINNING AND GRADE SEPARATION AT CN REDDITT SUBDIVISION CONTRACT 3

CITY DRAWING NUMBER U238-2014-2274 SHEET 13 OF 14

SHOOFLY REMOVAL AND FINAL CONFIGURATION STAGING PLAN STAGE D

CR-7104