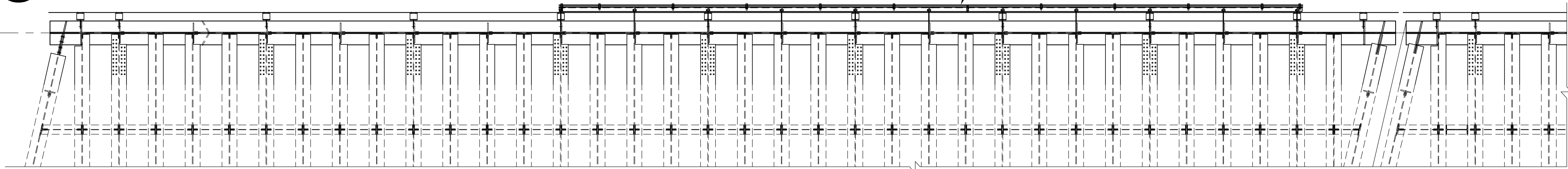
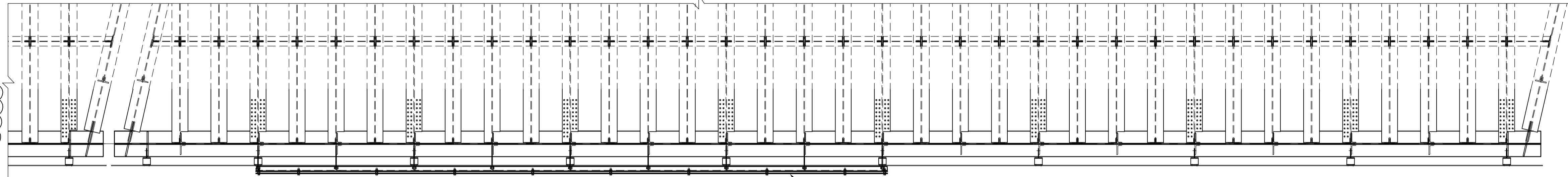


SIGN PLATES ABOVE SOUTH BOUND LANES



NOTES:

1. IF STAINLESS STEEL PLATE IS FABRICATED IN SEGMENTS CONNECTION DETAIL IS TO BE PROVIDED BY THE CONTRACTOR AND IS SUBJECT TO APPROVAL BY THE CONTRACT ADMINISTRATOR.
2. SIGN SHALL BE SHOP ASSEMBLED.
3. VERTICAL LOCATION OF SIGN AND FIBRE OPTIC SUPPORT TO BE CONFIRMED.
4. STAINLESS STEEL PLATES SHALL BE FREE FROM "FREE IRON". PROTECTIVE ADHESIVE FILM SHALL REMAIN ON SIGN THROUGHOUT FABRICATION AND INSTALLATION. PROTECTIVE FILM SHALL ONLY BE REMOVED AFTER INSTALLATION IS COMPLETE. ALL STAINLESS STEEL MEMBERS ARE TO BE PASSIVATED AND RINSED WITH WATER AFTER INSTALLATION AS PER ASTM A380/A380M - 13; STANDARD PRACTICE FOR CLEANING, DESCALING, AND PASSIVATION OF STAINLESS STEEL PARTS, EQUIPMENT, AND SYSTEMS.
5. PROVIDE SUPPORT BRACKET AT EACH GIRDER STIFFENER BEHIND THE SIGN
6. ALSO REFER TO DETAILS ON DRAWING L-0009

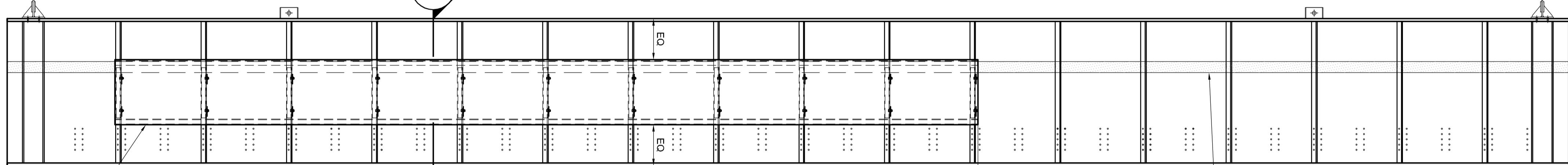
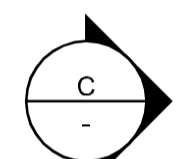
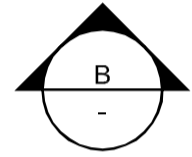


SIGN PLATES ABOVE NORTH BOUND LANES



PLAN

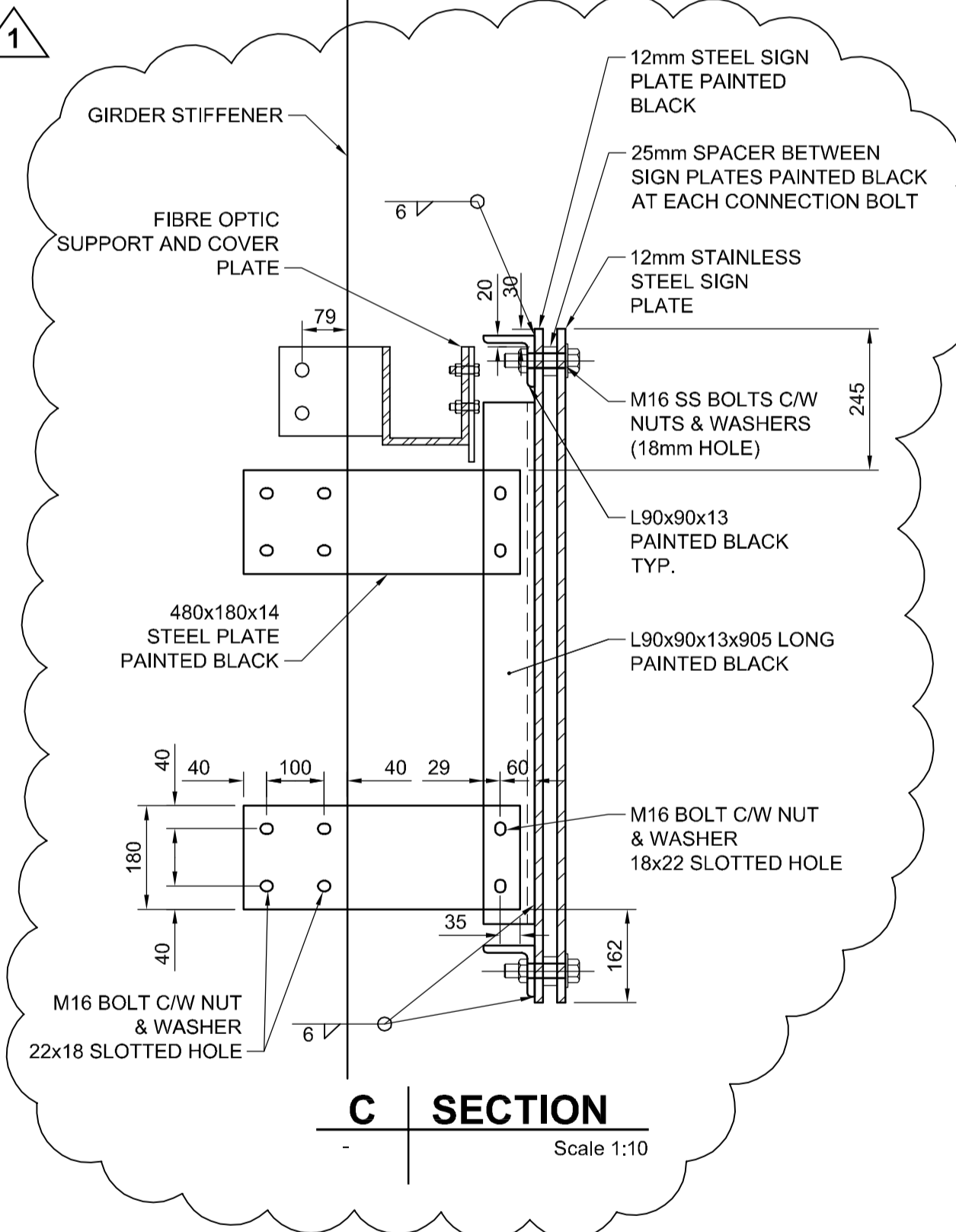
Scale 1:50



WELCOME TO SOUTH TRANSCONA

A ELEVATION

Scale 1:50



C SECTION

Scale 1:10

BACK PLATE PAINTED BLACK  
STAINLESS STEEL FRONT PLATE WITH LETTERS CUT OUT

M16 SS BOLT C/W NUT & WASHER (TYP.)



M16 SS BOLT C/W NUT & WASHER (TYP.)



171 TYP



BACK PLATE PAINTED BLACK  
STAINLESS STEEL FRONT PLATE WITH LETTERS CUT OUT

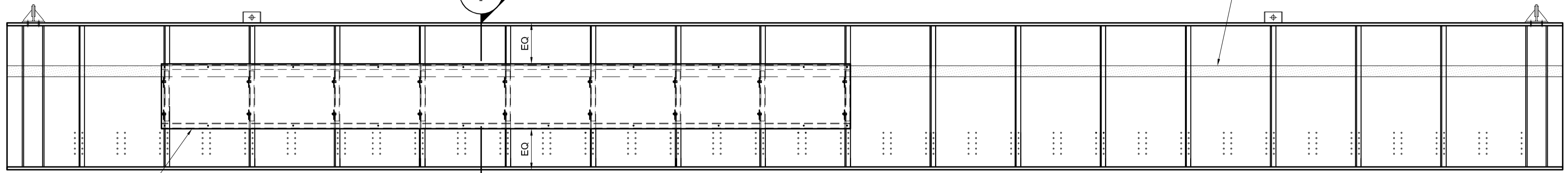
WELCOME TO TRANSCONA

M16 SS BOLT C/W NUT & WASHER (TYP.)



B ELEVATION

Scale 1:50



**AECOM**  
Certificate of Authorization  
AECOM Canada Ltd.  
ORIGINAL SIGNED ON  
No. 4671 Date: 2013/11/21

BID OPPORTUNITY NO. 712-2013

LOCATION APPROVED UNDERGROUND STRUCTURES	
SUPV. U/G STRUCTURES COMMITTEE	DATE
NOTE: LOCATION OF UNDERGROUND STRUCTURES AS SHOWN ARE BASED ON THE BEST INFORMATION AVAILABLE, BUT NO GUARANTEE IS GIVEN THAT ALL EXISTING UTILITIES ARE SHOWN OR THAT THE GIVEN LOCATIONS ARE EXACT. CONFIRMATION OF EXISTENCE AND EXACT LOCATION OF ALL SERVICES MUST BE OBTAINED FROM THE INDIVIDUAL UTILITIES BEFORE PROCEEDING WITH CONSTRUCTION.	

B.M. ELEV.			
NO.	REVISIONS	DATE	BY
1	ISSUED FOR ADDENDUM	2014/01/06	DJH
0	ISSUED FOR TENDER	2013/11/21	KC

<b>AECOM</b>	
DESIGNED BY	FT
CHECKED BY	EBL
DRAWN BY	DJH
APPROVED BY	EBL
HOR. SCALE:	AS NOTED
VERTICAL:	AS NOTED
RELEASED FOR CONSTRUCTION BY:	
DATE	2013-06-04
DATE	

ENGINEER'S SEAL  
PROVINCE OF MANITOBA  
ORIGINAL SIGNED BY  
**F. TABET**  
Member 38656  
ON NOV 21, 2013  
REGISTERED PROFESSIONAL ENGINEER

**THE CITY OF WINNIPEG**  
PUBLIC WORKS DEPARTMENT

PLESSIS ROAD TWINNING AND GRADE SEPARATION AT CN REDDITT SUBDIVISION CONTRACT 3

WELCOME TO TRANSCONA SIGNS

CITY DRAWING NUMBER U238-2014-2022  
SHEET 22 OF 37

CS-0022

CONSULTANT DRAWING NO. 60273041-01-CS-401