

MANHOLE, CATCH BASIN, CATCH PIT & DITCH INLET - STRUCTURE AND LOCATION SCHEDULE \_ SHT C-1002

STRUCTURE NUMBER	DESCRIPTION	FRAME & COVER	STATION	OFFSET FROM CONTROL LINE	RIM ELEVATION		INVERT NORTH	INVERT WEST	INVERT SOUTH	INVERT EAST	BOTTOM ELEVATION	CB LEAD	SPECIAL FEATURES
					EXISTING	PROPOSED							
CB.22	900x1.200DP SD-024	AP-008, AP-009	2+032.822m	37.774 W/SB		233.08				232.04	231.44	29.0m OF 250 SSP @ 1.5%	
CP.12	900x0.460DP SD-023	AP-008, AP-009	2+052.284m	28.027 W/SB		232.68				231.83	231.83	5.0m OF 250 DCP @ 1.28%	
CB.23	900x1.800DP SD-024	AP-008, AP-009	2+056.138m	24.833 W/SB		232.61		231.76		230.97	230.37	7.5m OF 250 SSP @ 1.50%	
CB.24	900x1.800DP SD-025	AP-004, AP-006	2+051.870m	15.193 W/SB		232.85		231.61		230.91	230.31	10.0m OF 250 SSP @ 1.50%	
CB.25	900x1.800DP SD-025	DITCH INLET GRATE	2+063.643m	24.086 W/SB		232.43 TOP/GRATE			230.86	230.78	230.18	16.5m OF 300 SSP @ 1.5%	
CB.26	900x1.800DP SD-024	AP-008, AP-009	2+060.050m	8.828 W/SB		232.68		230.61	231.06	230.52	229.92	15.5m OF 300 SSP @ 5.44%	C/W 900x0.46m RISER
CB.1	900x1.200DP SD-024	AP-008, AP-009	2+052.641m	37.369 E/SB		232.98	231.94				231.34	21.0m OF 250 SSP @ 6.1%	
CP.1	900x0.460DP SD-023	AP-008, AP-009	2+065.413m	33.457 E/SB		232.42	231.57				231.57	5.0m OF 250 DCP @ 4.88%	
CB.2	900x1.800DP SD-024	AP-008, AP-009	2+068.847m	29.835 E/SB		232.29		230.65	231.26	230.88	230.05	10.0m OF 300 SSP @ 0.447%	
CB.3	900x1.800DP SD-025	AP-004, AP-006	2+064.231m	20.613 E/SB		232.30		230.60	230.66	230.61	230.00	3.0m OF 300 SSP @ 1.50%	
CB.4	900x1.800DP SD-024	AP-008, AP-009	2+064.610m	18.138 E/SB		232.64		230.54		230.56	229.94	11.3m OF 300 SSP @ 7.88%	C/W 900x0.46 RISER
CB.48	900x1.800DP SD-025	DITCH INLET GRATE	2+058.205m	46.811 E/SB		232.75 TOP/GRATE		231.10		231.45	230.50	16.5m OF 250 SSP @ 1.50%	
CB.49	900x1.200DP SD-025	DITCH INLET GRATE	2+060.930m	60.825 E/SB		232.75 TOP/GRATE		231.70			231.10	17.0m OF 250 SSP @ 1.50%	
CP.13	900x0.460DP SD-023	AP-008, AP-009	2+111.608m	12.500 W/SB		230.75			229.90		229.90	5.0m OF 250 DCP @ 1.50%	
CB.28	900x1.800DP SD-024	AP-008, AP-009	2+106.608m	12.500 W/SB		231.00	229.82			229.36	228.76	18.0m OF 300 SSP @ 5.094%	
CP.2	900x0.460DP SD-023	AP-008, AP-009	2+099.927m	22.100 E/SB		231.26	230.41				230.41	5.0m OF 250 DCP @ 4.78%	
CB.5	900x1.800DP SD-024	AP-008, AP-009	2+104.929m	22.100 E/SB		231.02	229.84	229.38	230.17		228.78	14.5m OF 300 SSP @ 6.462%	
CP.3	900x0.460DP SD-023	AP-008, AP-009	2+109.929m	22.100 E/SB		230.77			229.92		229.92	5.0m OF 250 DCP @ 1.50%	
CB.44	900x1.200DP SD-025	DITCH INLET GRATE	2+113.482m	39.636 W/SB		232.75 TOP/GRATE				231.70	231.10	17.0m OF 250 SSP @ 10.0%	
MH.L21	1200 SD-010	AP-004, AP-005	2+115.502m	22.624 W/SB		231.419	229.040	230.000			229.040	21.5m OF 250 LDS @ 10.0%	
MH.L22	1800x1.83DP SD-010	AP-004, AP-005	2+136.621m	20.300 W/SB		230.540	226.931	222.845	226.890	222.845	222.845	4.1m OF 1050 LDS @ 0.12%	
CB.42	900x1.200DP SD-025	DITCH INLET GRATE	2+158.468m	40.878 W/SB		232.45 TOP/GRATE				231.40	230.80	21.0m OF 250 SSP @ 13.6%	
CB.41	900x1.200DP SD-025	DITCH INLET GRATE	2+174.878m	18.795 W/SB		229.21 TOP/GRATE			228.16		227.56	22.0m OF 250 SSP @ 0.57%	C/W RETAINING WALL
MH.L23	1200 SD-010	AP-004, AP-005	2+152.878m	20.300 W/SB		229.633	228.031	228.544	227.980		227.980	16.3m OF 300 LDS @ 6.43%	
MH.L19	1200 SD-010	AP-004, AP-005	2+136.621m	33.738 E/SB		230.660	NW 227.720 N 227.240	227.190			227.190	27.0m OF 300 LDS @ 13.2%	
CB.6	900x1.200DP SD-025	DITCH INLET GRATE	2+148.035m	22.497 E/SB		229.01 TOP/GRATE			227.96		227.36	16.0m OF 250 SSP @ 1.50%	
CB.21	900x1.200DP SD-025	DITCH INLET GRATE	2+186.431m	30.801 E/SB		229.04 TOP/GRATE			227.99		227.39	50.0m OF 250 SSP @ 1.50%	C/W RETAINING WALL
CB.7	900x1.800DP SD-024	AP-011	2+169.929m	8.200 E/SB		227.97	226.79	226.33			225.73	12.5m OF 300 SSP	C/W VERTICAL RISER, 45° BENDS & 0.5m DEEP INLET POCKET
CB.8	900x1.800DP SD-025	DITCH INLET GRATE	2+152.475m	6.401 E/SB		228.92 TOP/GRATE		227.27			226.67	16.0m OF 250 SSP @ 9.2%	
CP.4	900x0.460DP SD-023	AP-011	2+174.929m	8.200 E/SB		227.72			226.87		226.87	5.0m OF 250 DCP @ 1.50%	C/W 0.5m DEEP INLET POCKET
CB.31	900x1.800DP SD-024	AP-011	2+168.617m	12.498 W/SB		227.84	226.66			226.19	225.59	9.5m OF 300 SSP	C/W VERTICAL RISER & 45° BENDS
CP.14	900x0.460DP SD-023	AP-011	2+1730609m	12.502 W/SB		227.58			226.73		226.13	5.0m OF 250 DCP @ 1.50%	

METRIC  
WHOLE NUMBERS INDICATE MILLIMETRES  
DECIMALIZED NUMBERS INDICATE METRES



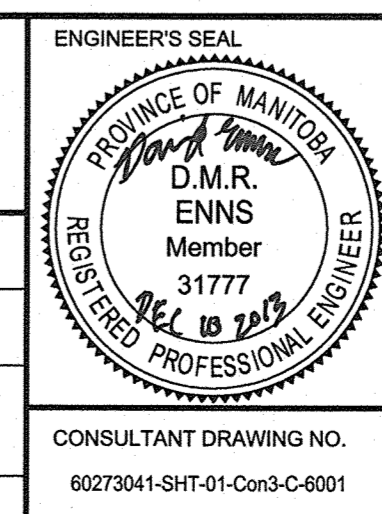
BID OPPORTUNITY NO. 712-2013

LOCATION APPROVED UNDERGROUND STRUCTURES  
SUPV. U/G STRUCTURES COMMITTEE DATE  
NOTE:  
LOCATION OF UNDERGROUND STRUCTURES AS SHOWN ARE BASED ON THE BEST INFORMATION AVAILABLE. BUT NO GUARANTEE IS GIVEN THAT ALL EXISTING UTILITIES ARE SHOWN OR THAT THE GIVEN LOCATIONS ARE EXACT. CONFIRMATION OF EXISTENCE AND EXACT LOCATION OF ALL SERVICES MUST BE OBTAINED FROM THE INDIVIDUAL UTILITIES BEFORE PROCEEDING WITH CONSTRUCTION.

B.M. ELEV.	NO.	REVISIONS	DATE	BY
	1	ISSUED FOR ADDENDUM	2013/12/10	KLC
	0	ISSUED FOR TENDER	2013/11/22	KMB

**AECOM**

DESIGNED BY: MPG  
CHECKED BY: [Signature]  
DRAWN BY: KMB  
APPROVED BY: [Signature]  
HOR. SCALE: AS NOTED  
VERTICAL: AS NOTED  
RELEASED FOR CONSTRUCTION BY: [Signature]



**THE CITY OF WINNIPEG PUBLIC WORKS DEPARTMENT**

PLESSIS ROAD TWINNING AND GRADE SEPARATION AT CN REDDITT SUBDIVISION CONTRACT 3

LAND DRAINAGE SYSTEM  
STRUCTURE & LOCATION SCHEDULE

CITY DRAWING NUMBER U238-2014-2313  
SHEET 13 OF 15  
C-6001