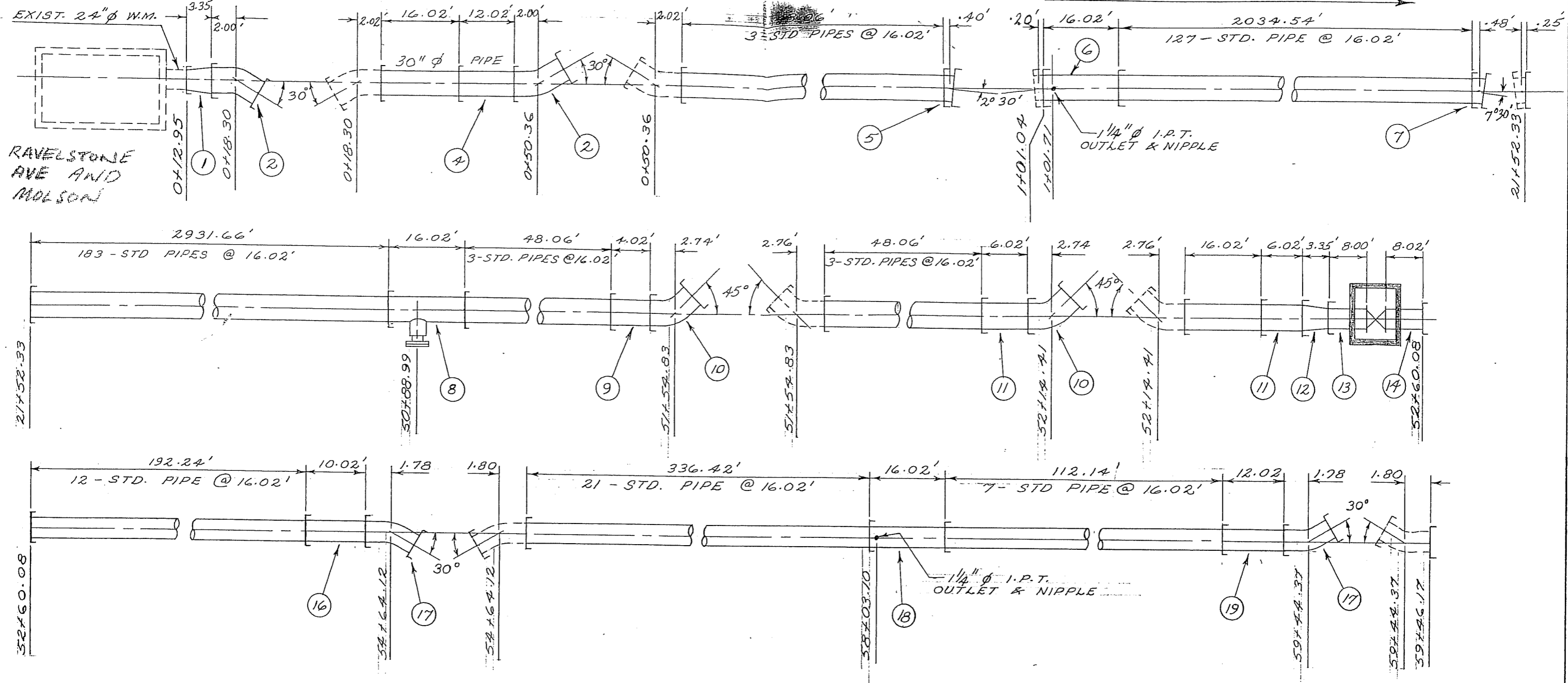


## **APPENDIX ‘D’**

# **FEEDERMAIN RECORD DRAWINGS AND LAYING SCHEDULE**

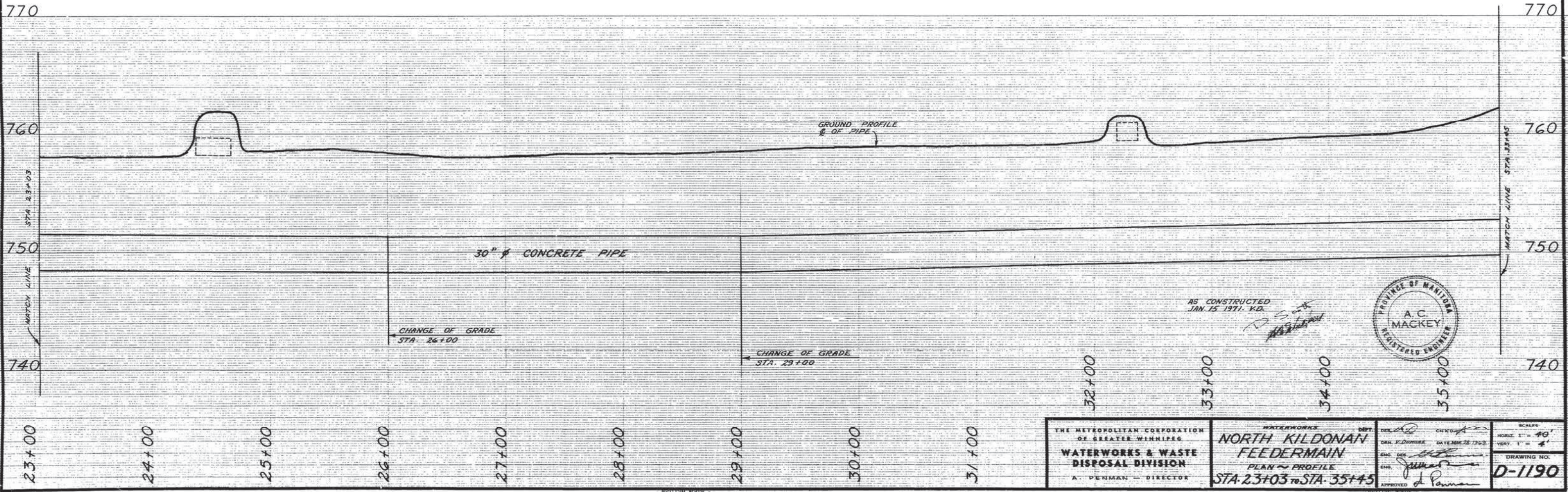
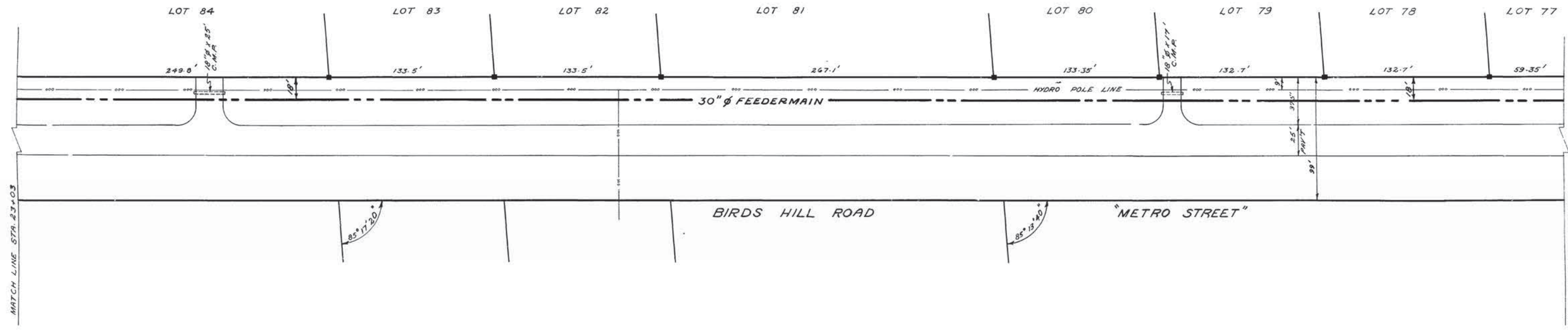


MK.	DIA.	QUAN.	DESCRIPTION	DWG. No.	11	30"	2	SHORT - 6.02' - S <sub>70</sub> B	D-1192
1	24" to 30"	1	REDUCER - 3.35' - S <sub>70</sub> B	D-1188	12	30" to 24"	1	REDUCER - 3.35' - S <sub>70</sub> B	"
2	30"	2	30° 00' BEND - 2.00' to 2.02' - S <sub>70</sub> B.	"	13	24"	1	SHORT - 8.00' - S <sub>70</sub> V.	"
4	30"	1	SHORT - 12.02' - S <sub>70</sub> B	"	14	24"	1	SHORT - 8.02' - V <sub>70</sub> B.	"
5	30"	1	2° 30' VERT. BEND - .60' - S <sub>70</sub> B	"	16	24"	1	SHORT - 10.02' - S <sub>70</sub> B	"
6	30"	1	STD. WITH 1/4" I.P.T. - 16.02' - S <sub>70</sub> B	"	17	24"	2	30° 00' BEND - 1.78' to 1.80' - S <sub>70</sub> B	"
7	30"	1	7° 30' BEND - .73' - S <sub>70</sub> B	D-1189	18	24"	1	STD. WITH 1/4" I.P.T. - 16.02' - S <sub>70</sub> B	D-1193
8	30"	1	STD. WITH 12" F. OUTLET - 16.02' - S <sub>70</sub> B	D-1192	19	24"	1	SHORT - 12.02' - S <sub>70</sub> B	"
9	30"	1	SHORT - 4.02' - S <sub>70</sub> B	"	3	30"	321	STANDARD - 16.02' - S <sub>70</sub> B	"
10	30"	2	45° 00' BEND - 2.74' to 2.76' - S <sub>70</sub> B	"	15	24"	70	STANDARD - 16.02' - S <sub>70</sub> B	"

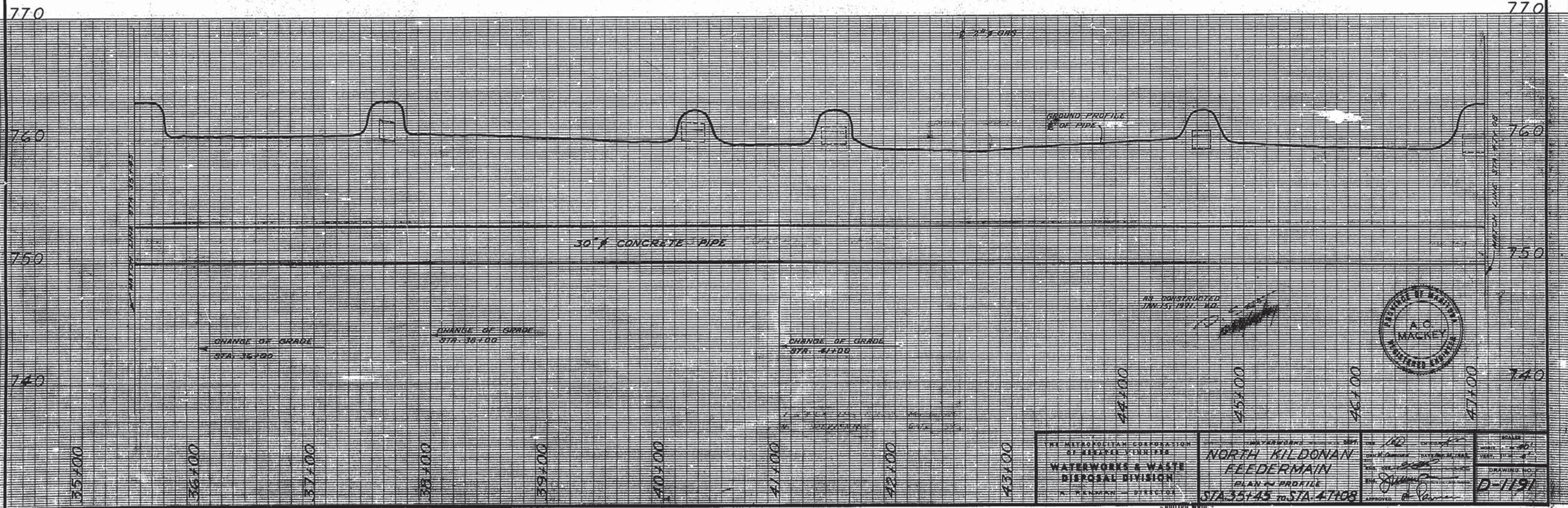
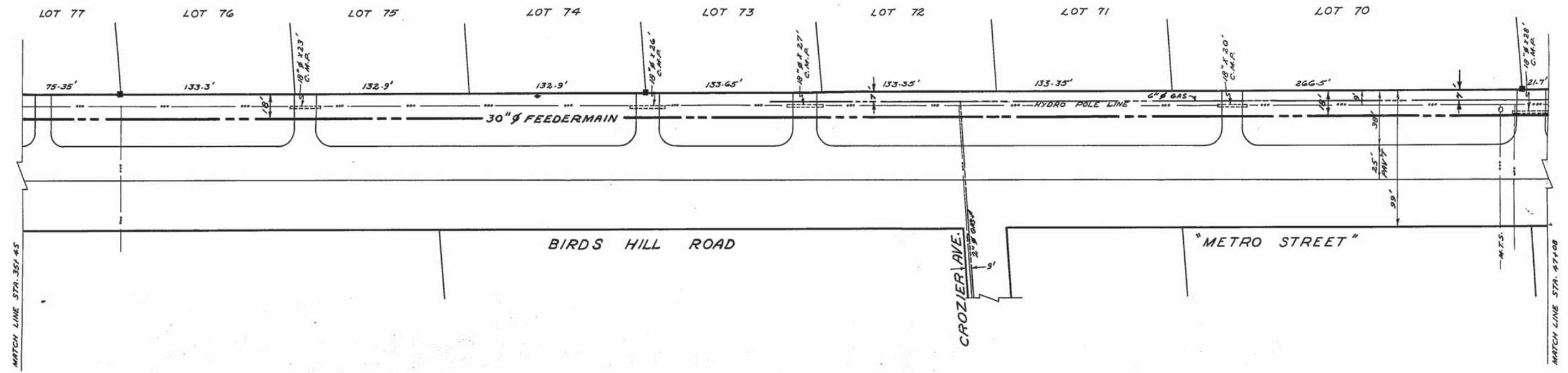
NORTH KILDONAN  
FEEDER MAIN

F-1986-1



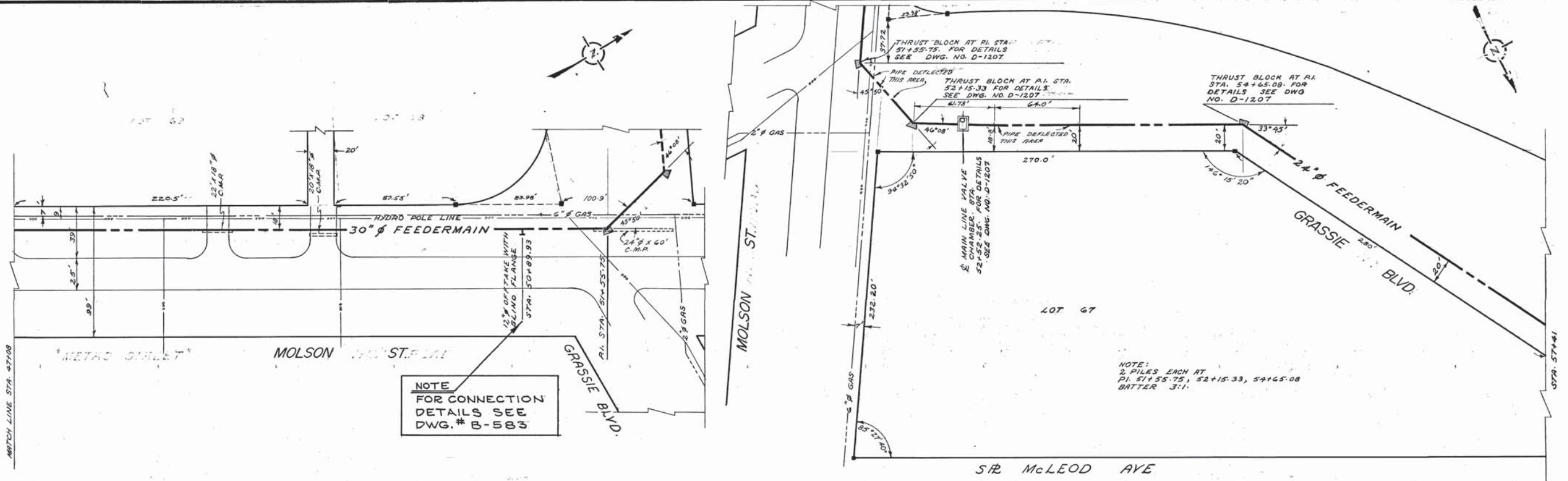






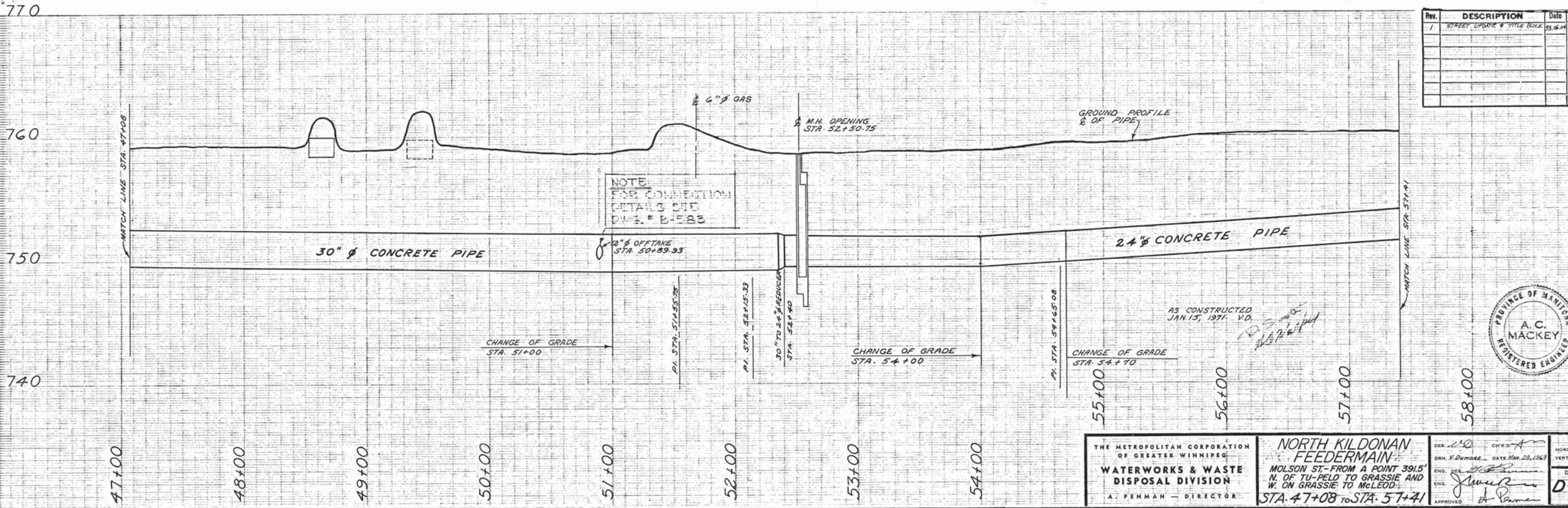
THE METROPOLITAN CORPORATION OF KANSAS CITY, MISSOURI WATERWORKS & WASTE DISPOSAL DIVISION A. KENNEDY, DIRECTOR	NORTH KILDONAN FEEDERMAIN PLAN & PROFILE STA. 35+45 TO STA. 47+08	DATE: 1/10/77 DRAWN BY: [Signature] CHECKED BY: [Signature] APPROVED BY: [Signature]	SCALE: 1" = 40' DRAWING NO.: D-1191
	PROJECT NO. 100 SHEET NO. 100		





NOTE  
FOR CONNECTION  
DETAILS SEE  
DWG. # B-583

NOTE:  
2 PILES EACH AT  
PI. 51+55.75, 52+52.25, 54+65.08  
BATTER 3:1.



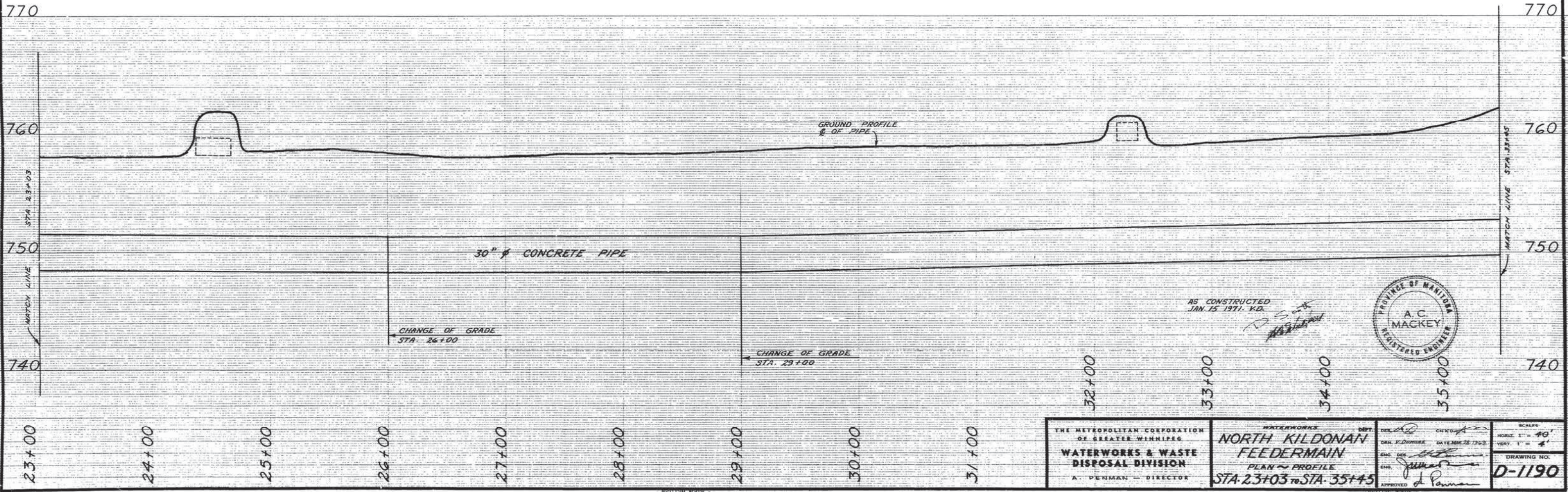
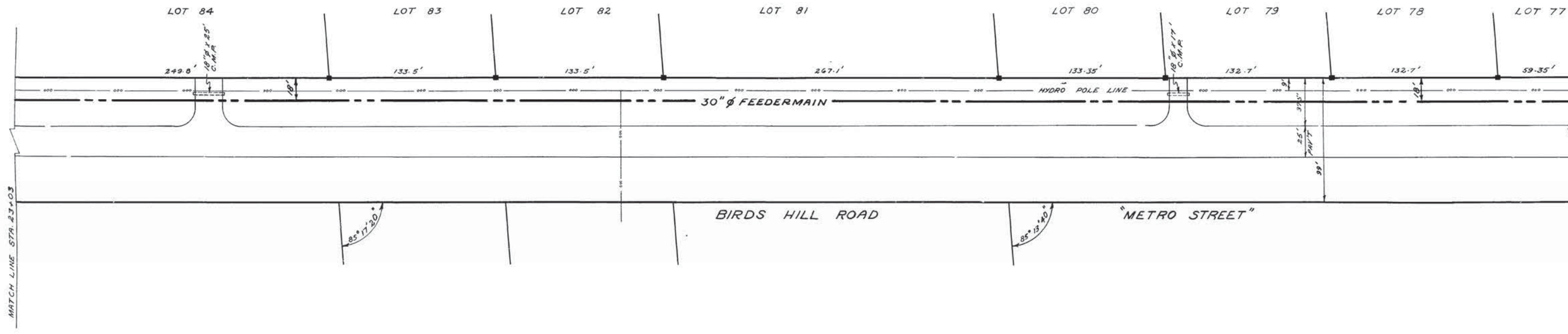
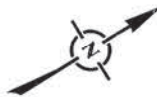
NOTE  
FOR CONNECTION  
DETAILS SEE  
DWG. # B-583

REV.	DESCRIPTION	DATE	BY
1	STREET UPGRADE & TITLE BLOCK	03.06.04	K.T.

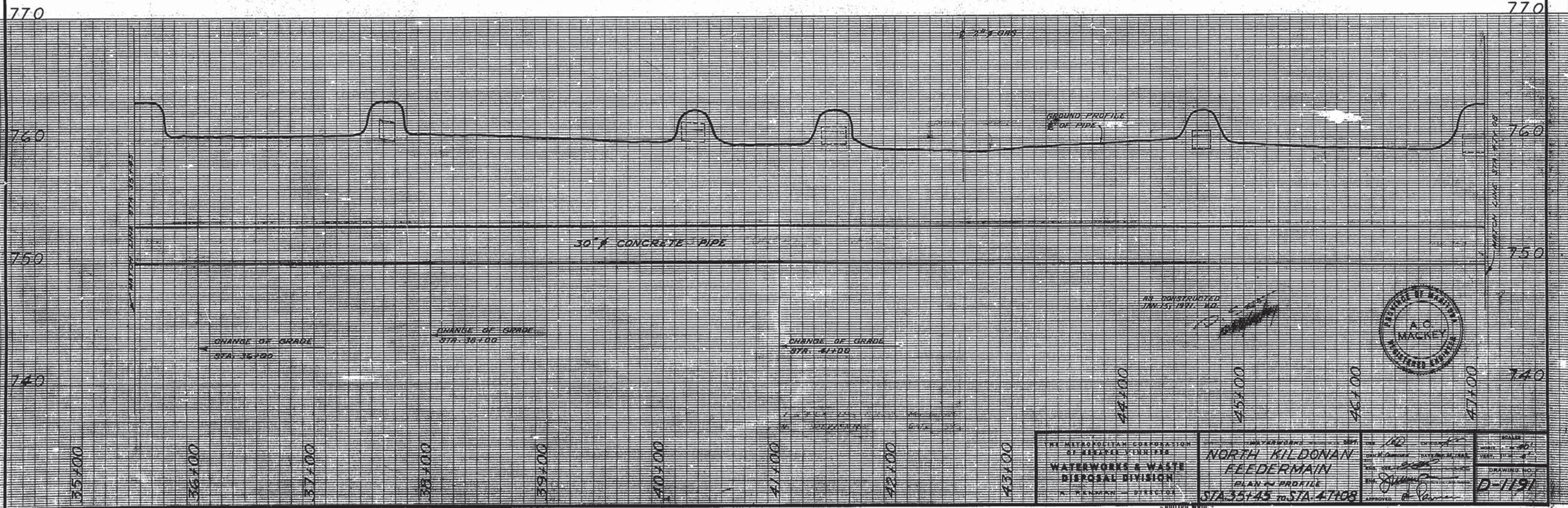
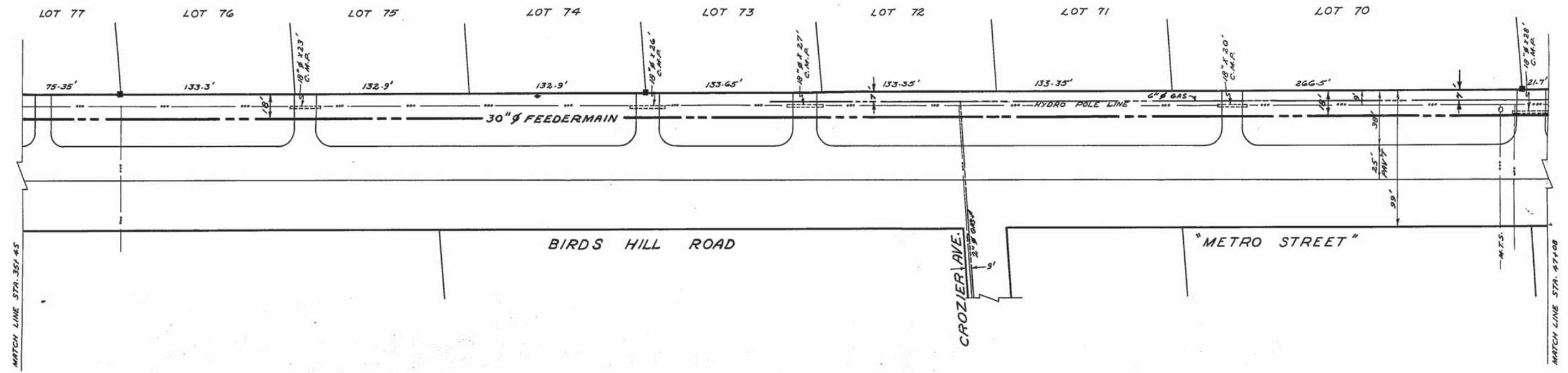


THE METROPOLITAN CORPORATION OF GREATER WINNIPEG <b>WATERWORKS &amp; WASTE DISPOSAL DIVISION</b> A. PENMAN - DIRECTOR	<b>NORTH KILDONAN FEEDERMAIN</b> MOLSON ST-FROM A POINT 391.5' N. OF TU-PELO TO GRASSIE AND W. ON GRASSIE TO McLEOD. STA. 47+08 TO STA. 57+41	DES. <i>L.S.</i> CHKD. <i>A.P.</i> DRN. <i>V. Dunbar</i> DATE <i>Mar 28, 1969</i>	SCALE HORIZ. 1" = 40' VERT. 1" = 4' DRAWING NO.
		ENG. <i>J. Penman</i> APPROVED <i>J. Penman</i>	<b>D-1193</b>



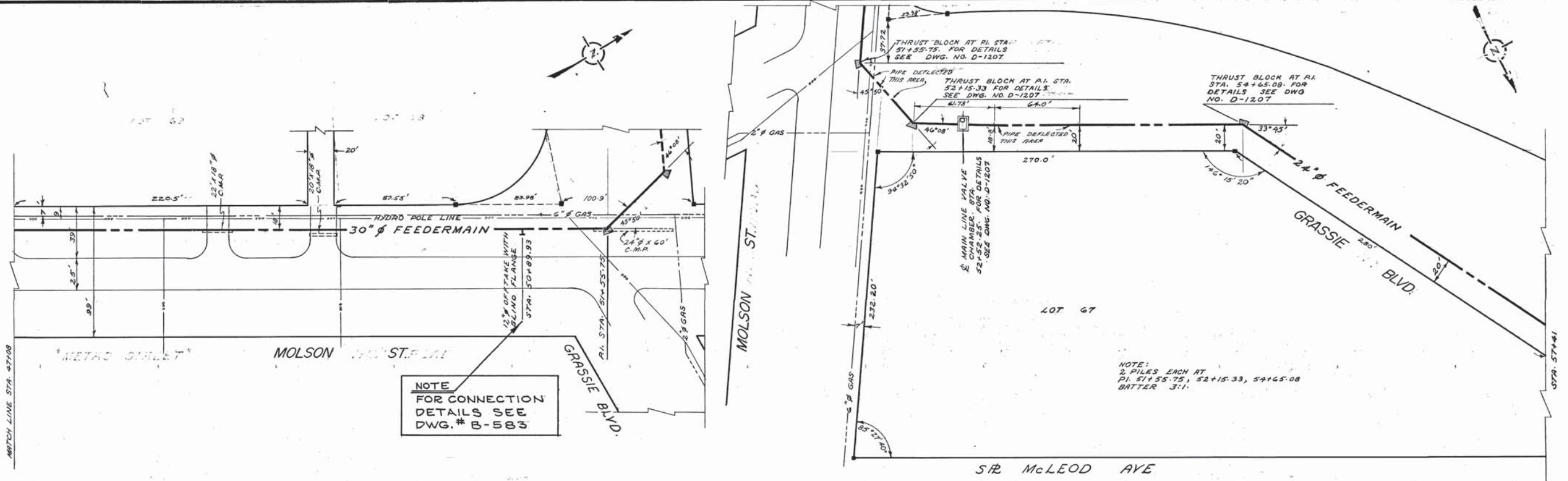






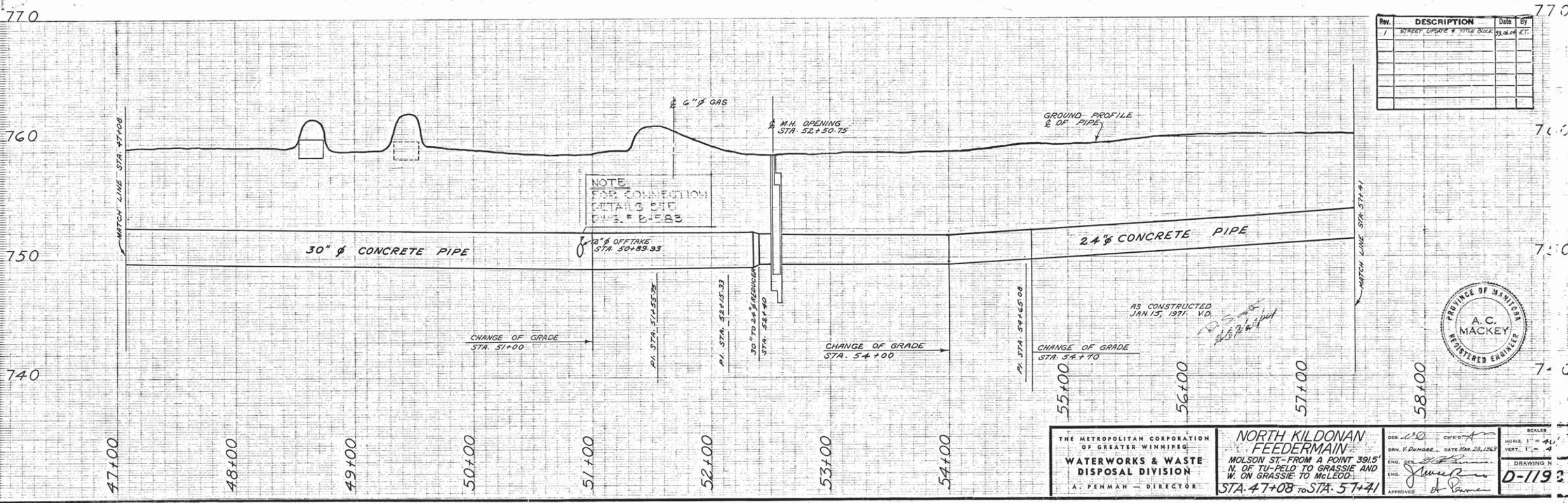
THE METROPOLITAN CORPORATION OF KANSAS CITY, MISSOURI WATERWORKS & WASTE DISPOSAL DIVISION A. KENNEDY - DIRECTOR	NORTH KILDONAN FEEDERMAIN PLAN & PROFILE STA. 35+45 to STA. 47+08	DATE: 1/10/77 DRAWN BY: [Signature] CHECKED BY: [Signature] APPROVED BY: [Signature]	SCALE: 1" = 40' DRAWING NO.: <b>D-1191</b>
	PROJECT NO. 100 SHEET NO. 100		





**NOTE**  
FOR CONNECTION  
DETAILS SEE  
DWG. # B-583

**NOTE:**  
2 PILES EACH AT  
PI. 51+55.75, 52+15.33, 54+65.08  
BATTER 3:1.



**NOTE**  
FOR CONNECTION  
DETAILS SEE  
DWG. # B-583

REV.	DESCRIPTION	Date	By
1	STREET LAYOUT & TITLE BLOCK	03.06.04	K.T.



THE METROPOLITAN CORPORATION  
OF GREATER WINNIPEG  
**WATERWORKS & WASTE  
DISPOSAL DIVISION**  
A. PENMAN - DIRECTOR

**NORTH KILDONAN  
FEEDERMAIN**  
MOLSON ST-FROM A POINT 391.5'  
N. OF TU-PELO TO GRASSIE AND  
W. ON GRASSIE TO McLEOD.  
STA. 47+08 TO STA. 57+41

DES. *L.S.* CHKD. *A.P.*  
DRN. *V. Dunbar* DATE *Mar 28, 1969*  
ENG. *J. Penman*  
APPROVED *J. Penman*  
SCALE: HORIZ. 1" = 40'  
VERT. 1" = 4'  
DRAWING NO. **D-1193**