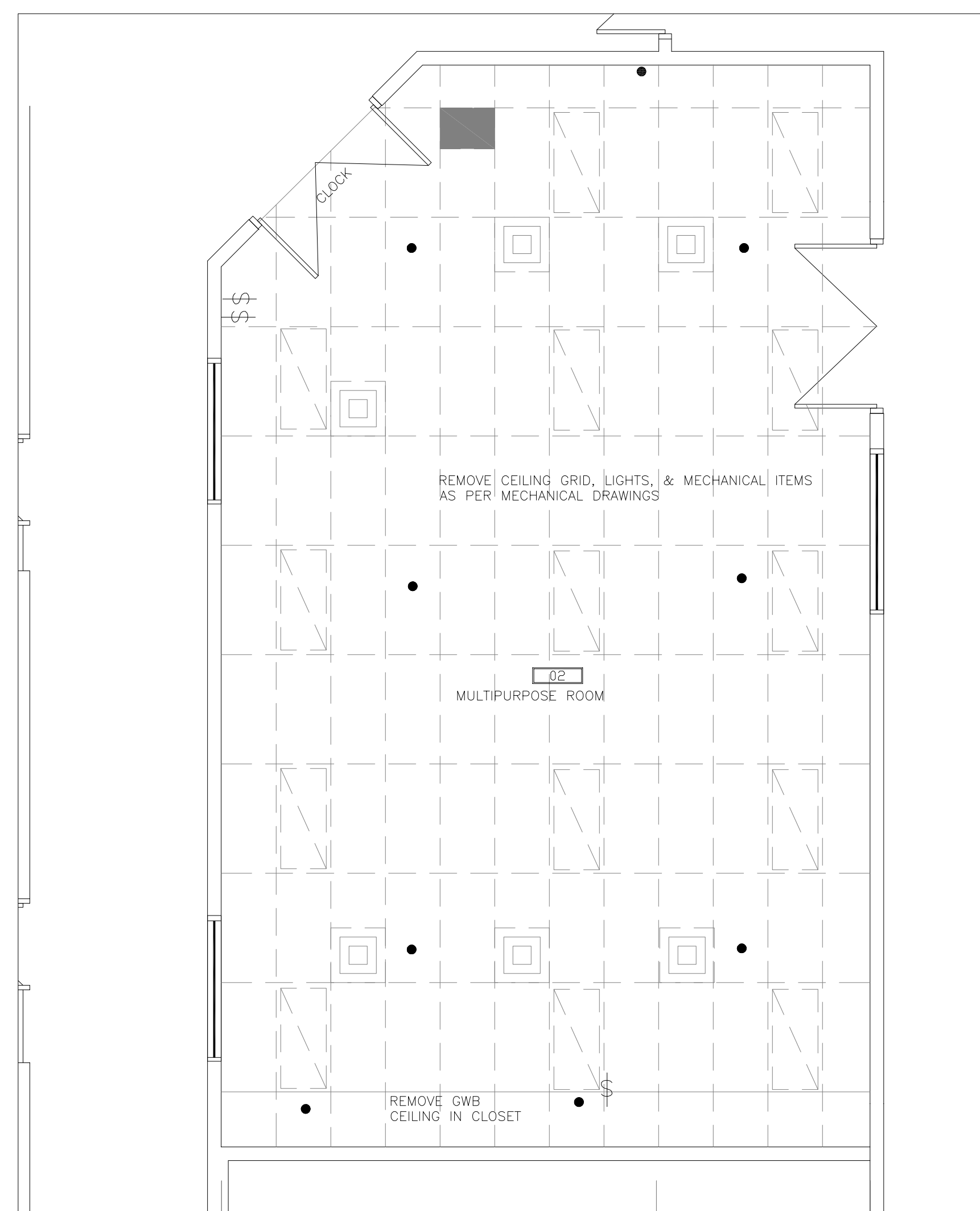
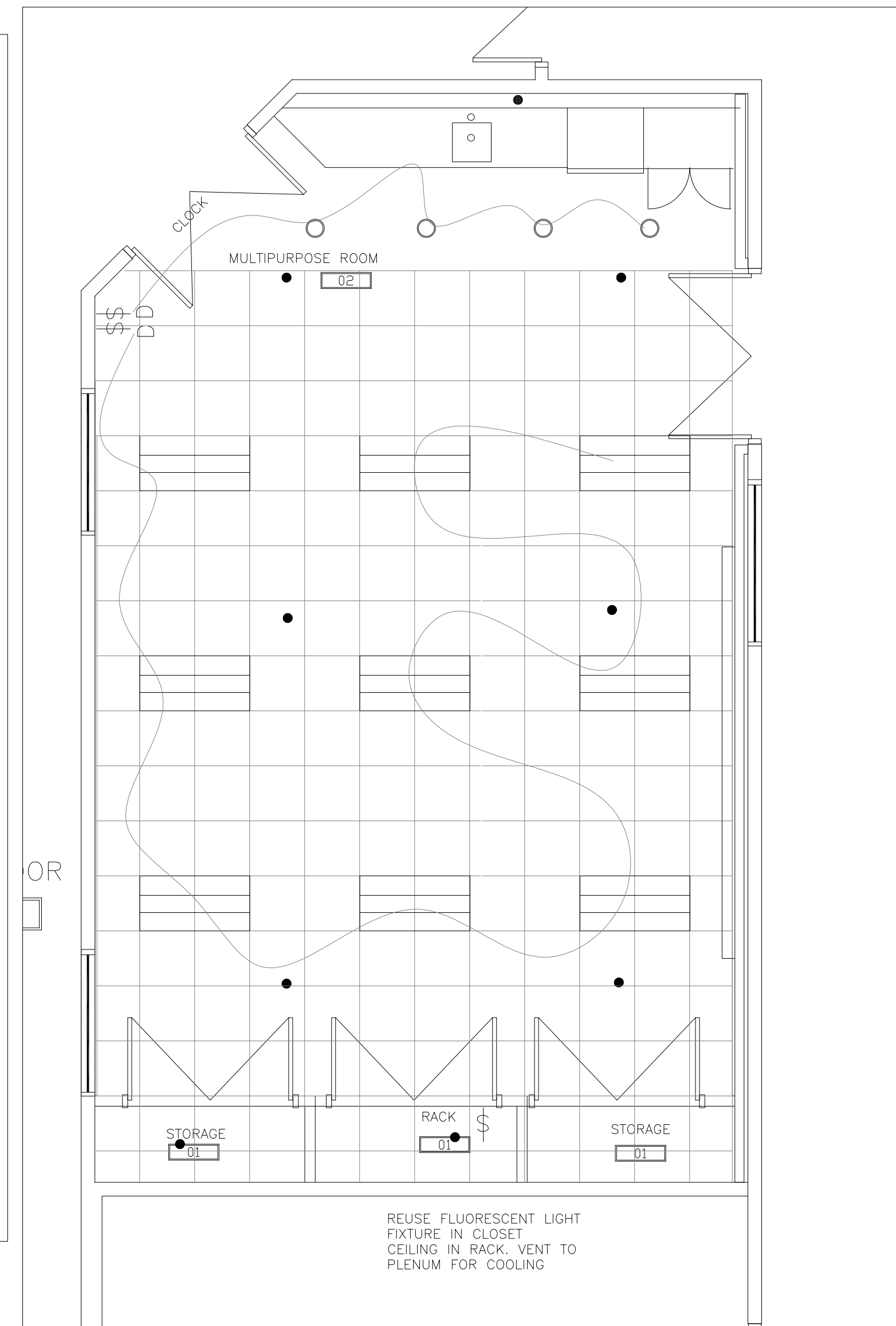


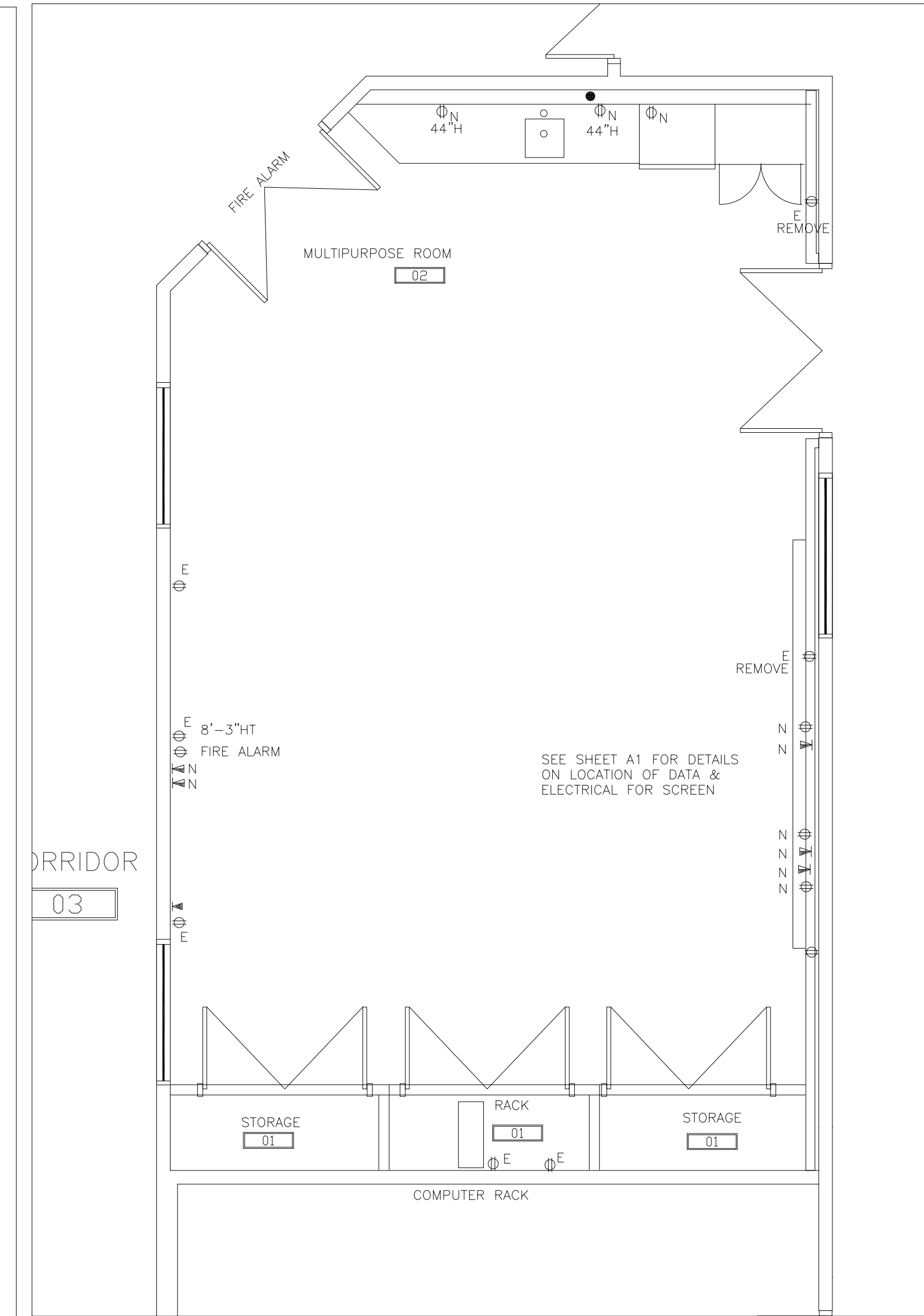
DEMOLITION PLAN



CEILING DEMOLITION PLAN



REFLECTED CEILING PLAN



ELECTRICAL LAYOUT

MATERIAL LIST

CARPET TILE
TANDUS
TOP SHELF 03606
COLOR DRAGONFLY 47020
2 BOXES NO INSTALLATION.
PLACE IN STORAGE
IN MULTIPURPOSE ROOM

RUBBER FLOORING
MFR: MONDO
3MM, ROLL
HARMONI LISSE/SMOOTH
HAS 60 EMERALD

RUBBER COVER BASE
JOHNSONITE WALL BASE
80 FAWN 4" MPR ONLY

RUBBER COVE BASE
JOHNSONITE WALL BASE
27 MIST 6" CORRIDORS

TYPE 3
WILSONART
FONTHILL PEAR 10745-60
MPR ONLY

TYPE 4
NEVAMAR
BOTANICAL ALLUSION
ALSO02T
FOR RECEPTION DESK

SOLID SURFACE
SMD5 DIMASTONE
DESERT SPICE 1 1/4" THICK
POLISH SURFACE
MATCHING TILE FOR BACKSPASH
GROUT
FLEXITILE BEACH BUFF 556

STONE FOR WALL
LEDGER STONE MALBROS #34
COMPLETE WITH SEALER

MELAMINE
PANOLAM
WHITE

ALL PAINTED AREAS TO HAVE 3 COATS OF PAINT

PAINT TYPE 1
BENJAMIN MOORE
NO VOC PAINT
CC-540 STAMPED CHAGRIN
EGGSHELL

PAINT TYPE 2
DELETE THIS NUMBER

PAINT TYPE 3
DULUX LIFEMASTER
PEPPER SPICE 90YR 18/ 177
A1756
EGGSHELL

PAINT TYPE 4
DULUX LIFEMASTER
SUDAN SAND, CAMELOT
30YY 53/ 125, A1809
EGGSHELL

PAINT TYPE 5
BENJAMIN MOORE
NO VOC PAINT
OC-37 GLACIER WHITE
EGGSHELL

PAINT TYPE 8
DULUX LIFE MASTER
WHITE HIDE-HIDING RM
98Y 82/ 022
EGGSHELL

SURFACE RESTORATION OF
TERRAZZO FLOORING
TO BE PERFORMED BY A
SPECIALIST WITH SPECIFIC
EQUIPMENT IN
ACCORDANCE WITH THE
TILE & MARBLE
ASSOCIATION OF CANADA

AREAS WITH CONCRETE
FILLER TO BE REMOVED
AND REPAIRED TO LOOK
AS CLOSE TO FINISHED
TERRAZZO FLOOR.
SPECIFICATIONS ANTEX
WESTERN

CORRIDOR WALL TILE
THISIZEM
COLOR AVORIO
SIZE: 3600 X 1200 X 3
MM
SCHLUTER STAINLESS
STEEL EDGE DETAIL AT ALL
CUT EDGES E-30 TRIM
SHEET LAYOUT TO BE
REVIEWED WITH CONTRACT
ADMINISTRATOR TO
CUTTING ANY SHEETS
AREAS AS NOTED ON PLAN
SUPPLIED BY CARRARA
TILE, THIS PRODUCT
COMES FROM ITALY 8 TO
12 WEEKS DELIVERY

3FORM
STYLE THATCH 50%
FINISH FRONT SANDSTONE
BACK SFX FROST
7/4" GAUGE

KINDRED
UNDERMOUNT SINGLE SINK
18 GAUGE STAINLESS STEEL
8" DEEP, 17", 17"
1 ONLY MULTIPURPOSE ROOM

DELTA BAR FAUCET
TRINISC SINGLE HANDLE
MODEL: 9159-DST
STAINLESS STEEL FINISH

LIGHTING LEGEND

SWITCH BLACK WITH STAINLESS STEEL
COVER PLATES

RECESSED FLUORESCENT
MFR: SHINE
MODEL: 3324 D1 ST T332 S 1 1 E
SIZE: 2' X 4'
STANDARD T-BAR
LAMPING 3 T8
HOUSING STANDARD 22G.
WIRING 1 CCT
VOLTAGE 120V, OR 277 VOLTS

LIGHTTOLIER
LED
MODEL:
C6LD20n1/c6L1520DL30KM
BASE FINISH CCLW COMFORT
CLEAR, WHITE

RELOCATE EXISTING
DIFFUSERS AS NOTED
NEW AIR RETURN
AS PER CODE

SPRINKLER HEAD

POWER & SYSTEMS LEGEND

DUPLEX OUTLET

ISOLATED GROUND OUTLET

DATE/COMMUNICATION OUTLET

N NEW
E EXISTING
R REMOVE

T-BAR
ARMSTRONG
PRELUDE XL WHITE ALUMINUM
2' X 2'
1/8" EXPOSED TEE SYSTEM

ACOUSTIC CEILING TILES
ARMSTRONG
CIRRUS, ANGLED REGULAR
2' X 2' X 3/4"
1/8" EXPOSED TEE SYSTEM
WHITE

- STANDARDS
AWMAC PREMIUM GRADE MILL STANDARD LATEST EDITION
- CONSTRUCTION
A) DRAWER BACKS, AND BOTTOMS TO BE 1/2" BIRCH OR FIR
B) ALL EXTERIOR SURFACES (INCLUDING TOPS, GABLES, BOTH SIDES OF DRAWER AND DOOR FRONTS AND SELF EDGING, ETC.) TO BE FINISHED AS NOTED FOR SPECIFIC MILLWORK.
C) ALL SUPPORT BLOCKING WITHIN MILLWORK TO BE CONCEALED FROM VIEW.
D) ALL UNITS TO BE FIRMLY SCRIBED WITHIN PARTITIONS.
E) ALL CONSTRUCTION TO BE 3/4" PLYWOOD OR PARTICAL BOARD.
- SHOP DRAWINGS
SHOP DRAWINGS TO BE DONE AND SENT TO CONTRACT ADMINISTRATIONS FOR APPROVAL PRIOR TO CONSTRUCTION.

MILLWORK HARDWARE

DRAWER SLIDES BLUM 56H TANDEM FULL EXTENSION SLIDE WITH BLUN MOTION DEPTH TO MATCH CABINET SIZE UNDER MOUNT

HINGES HETTICK CONCEALED HINGES, NO 790 NICKEL FINISH 110 DEGREES.

PULLS HAFELE MODEL: 117.05.620 8" LONG, STAINLESS STEEL PAGE 194

TOWEL RACK HAFELE: MODEL: 510.06.725 MOUNTES TO SIDE OF CABINET SIZE: 5 1/2", 1 1/2" CHROME POLISHED

WARDROBE RAIL HAFELE: MODEL: 801.42.900 SIZE: 1 3/4" DIA WAIT ALUMINUM ALUMINUM ANODIZED MODEL: 803.56.900

C/W SUPPORTS

2	APRIL 5, 2013	ADDENDUM #1	M.G.
1	MARCH 20, 2013	ISSUED FOR CONSTRUCTION	M.G.
0	MARCH 11, 2013	ISSUED FOR TENDER	M.G.

NO.	DATE	DESCRIPTION	BY
-----	------	-------------	----

DRAWN BY
PRINTING DATE

The contractor is to verify dimensions and data noted herein with conditions on the site and is held responsible for reporting any discrepancy to the contract administrator for adjustment.



SYNERGY INTERIOR DESIGN INC.
13 Rosewarne, Avenue WINNIPEG, MB Canada R2M 0V8
204 233 9159
malvine@synergyinteriors.com

DATE MARCH 11, 2013 SCALE 1/4" = 1'-0" REVISIONS
DRAWN BY M.G. CHECKED BY M.G.

MULTIPURPOSE/BOARDROOM UPGRADES PHASE 2
FORT ROUGE LEISURE CENTER 625 OSBORNE ST SOUTH
WINNIPEG, MANITOBA

PROJECT SHEET
REFLECTED CEILING PLAN, ELECTRICAL LAYOUT
DEMOLITION REFLECTED CEILING PLAN, DEMOLITION PLAN
BID OPPORTUNITY NO. 939-2012 DWG. A-2