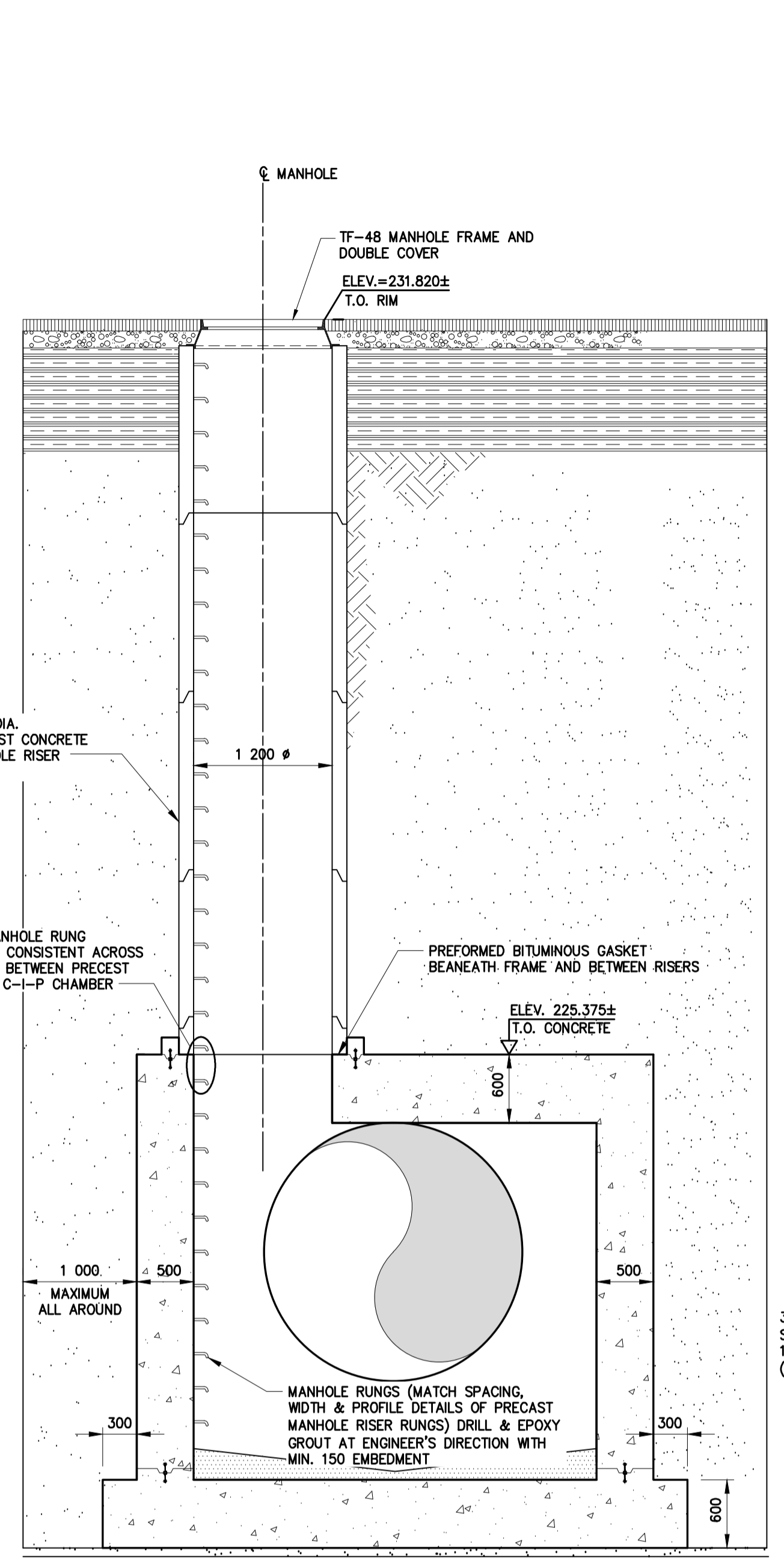
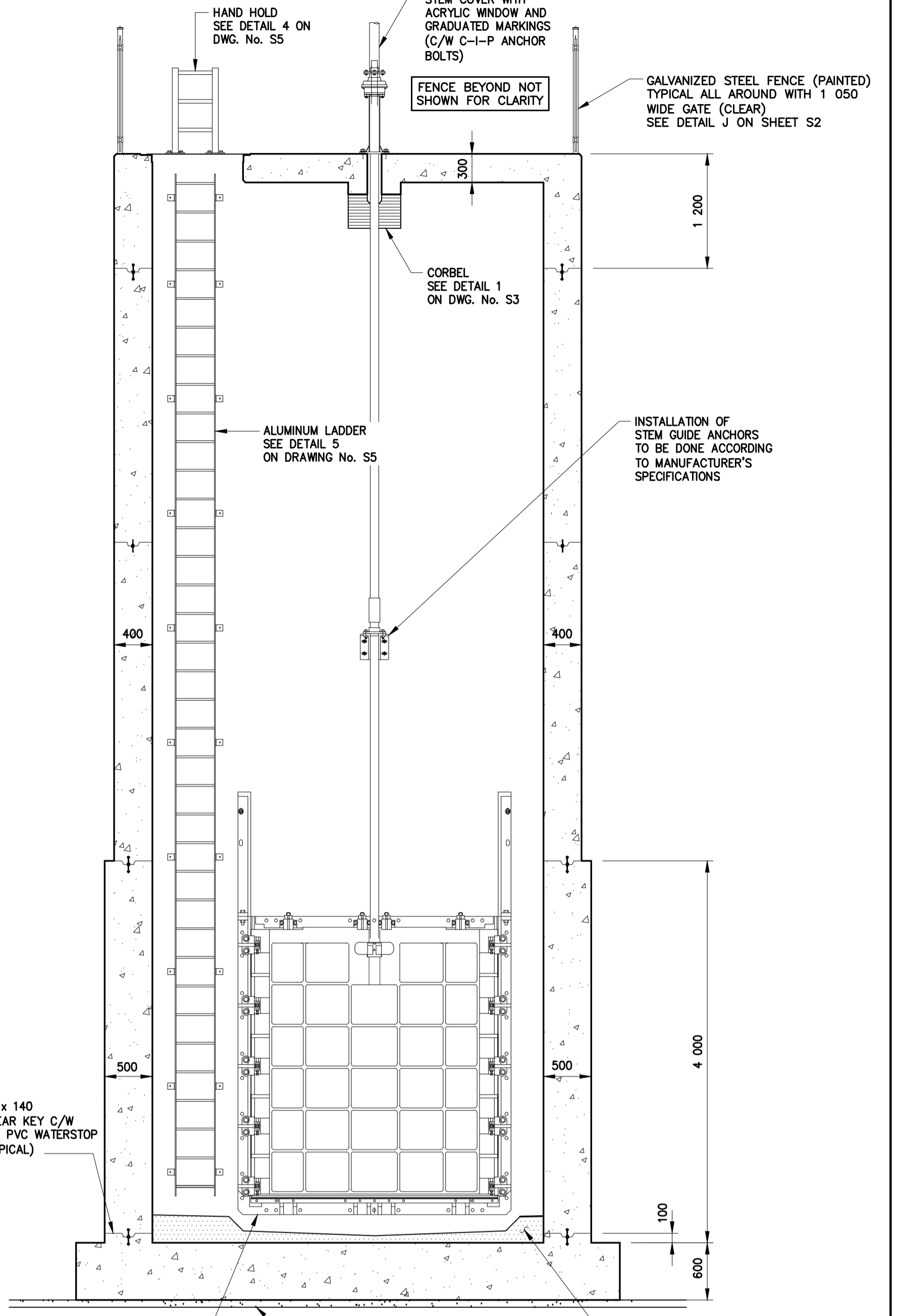


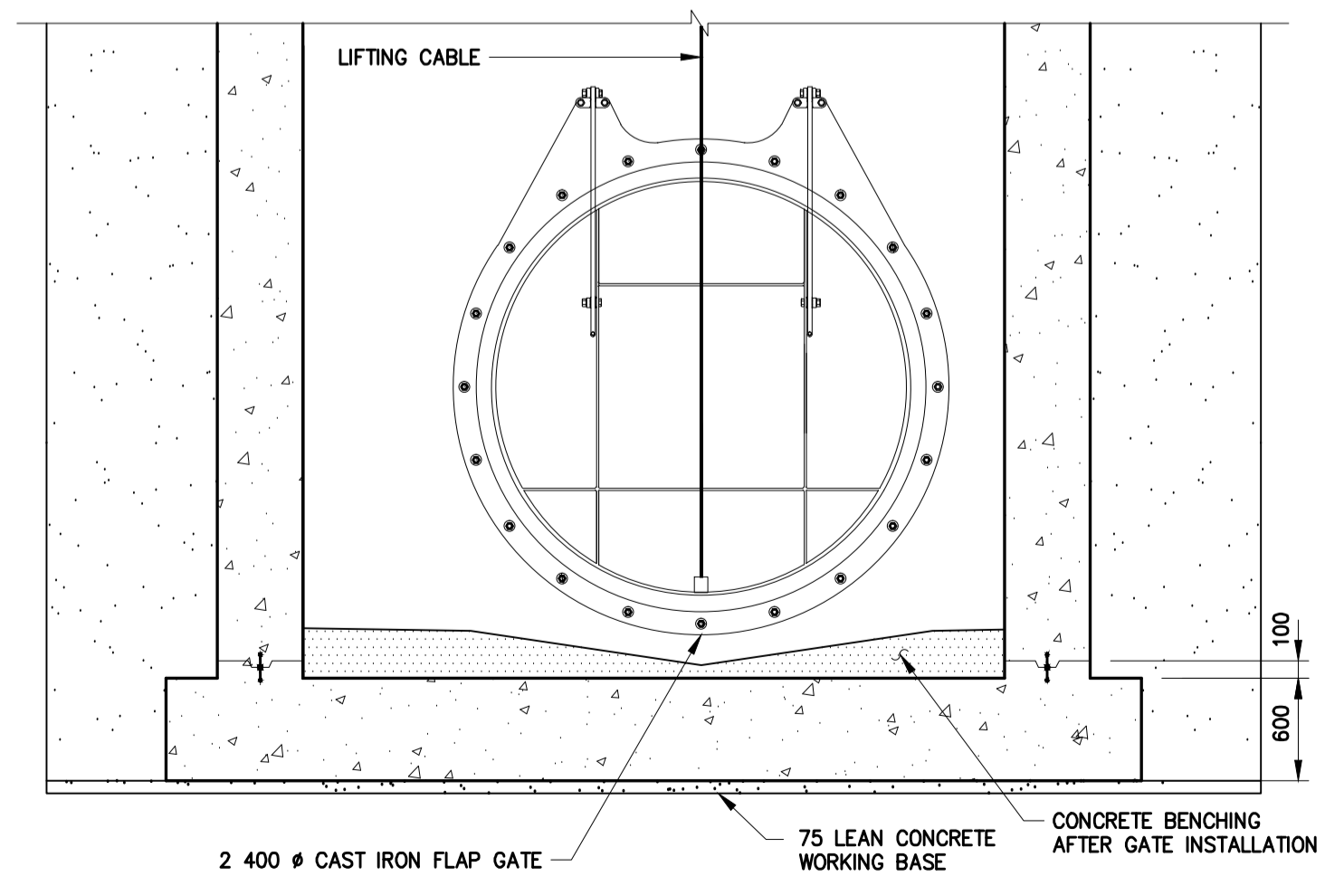
SECTION A-S1
1:40



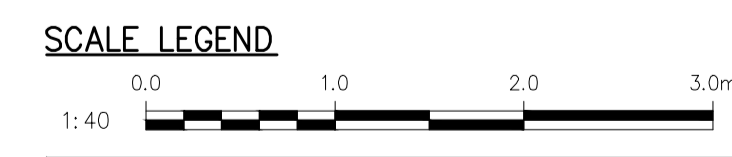
SECTION B-S1
1:40



SECTION C-S1
1:40



SECTION D-S1
1:40



METRIC
WHOLE NUMBERS INDICATE MILLIMETRES
DECIMALIZED NUMBERS INDICATE METRES

No.	REVISIONS	DATE	BY	DATE	12.10.05	DATE	12.10.05
1	ISSUED FOR ADDENDUM No. 2	12.10.15	EH				
0	ISSUED FOR TENDER	12.10.05	EH				

DESIGNED BY	MM	CHECKED BY	EH
DRAWN BY	KB	APPROVED BY	JPL
HOR. SCALE	AS NOTED	RELEASED FOR CONSTRUCTION	
VERT. SCALE	AS NOTED		



THE CITY OF WINNIPEG
WASTE AND WATER DEPARTMENT
Winnipeg

OUTFALL GATE CHAMBER UPGRADES
RIVERGATE
LDS OUTFALL GATE CHAMBER
CONCRETE DETAILS (SHEET 2 OF 2)

CONSULTANT DRAWING No.: 5512082-S2
SHEET 4 OF 8
CITY DRAWING No.: LD-6032

ENGINEER'S SEAL: PROVINCE OF MANITOBA, E. HQ, Member 22317, REGISTERED PROFESSIONAL ENGINEER

BID OPPORTUNITY: 745-2012
PLOT DATE: 12.10.05



Printed: October 16, 2015, at 10:15:11 AM. I, Jack Stuedy, B.S., P.Eng., License No. 10000, is the author of this drawing. I have prepared this drawing in accordance with the requirements of the Professional Engineers Act, R.S.M. 1990, c. 100. I have not been involved in the design of any other part of the project. I have not been involved in the design of any other part of the project. I have not been involved in the design of any other part of the project.