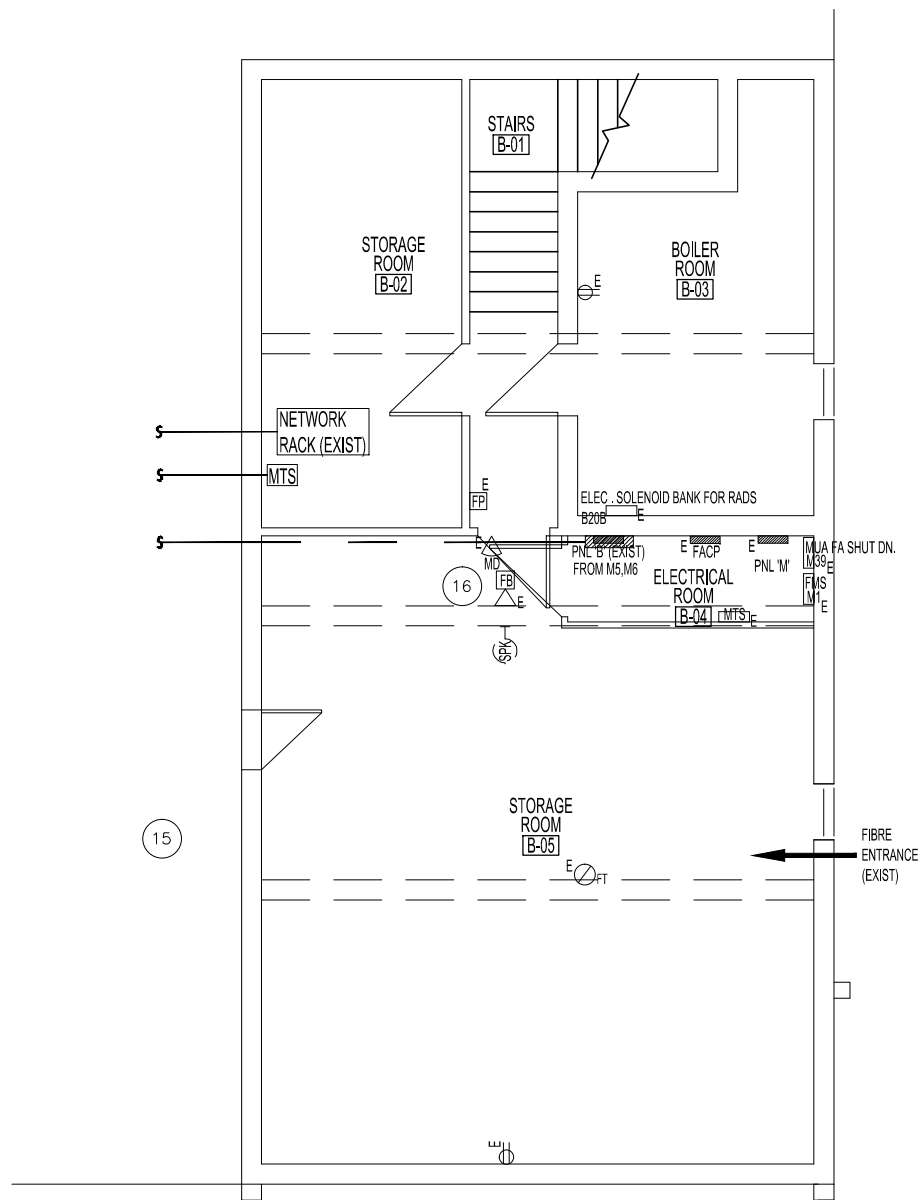
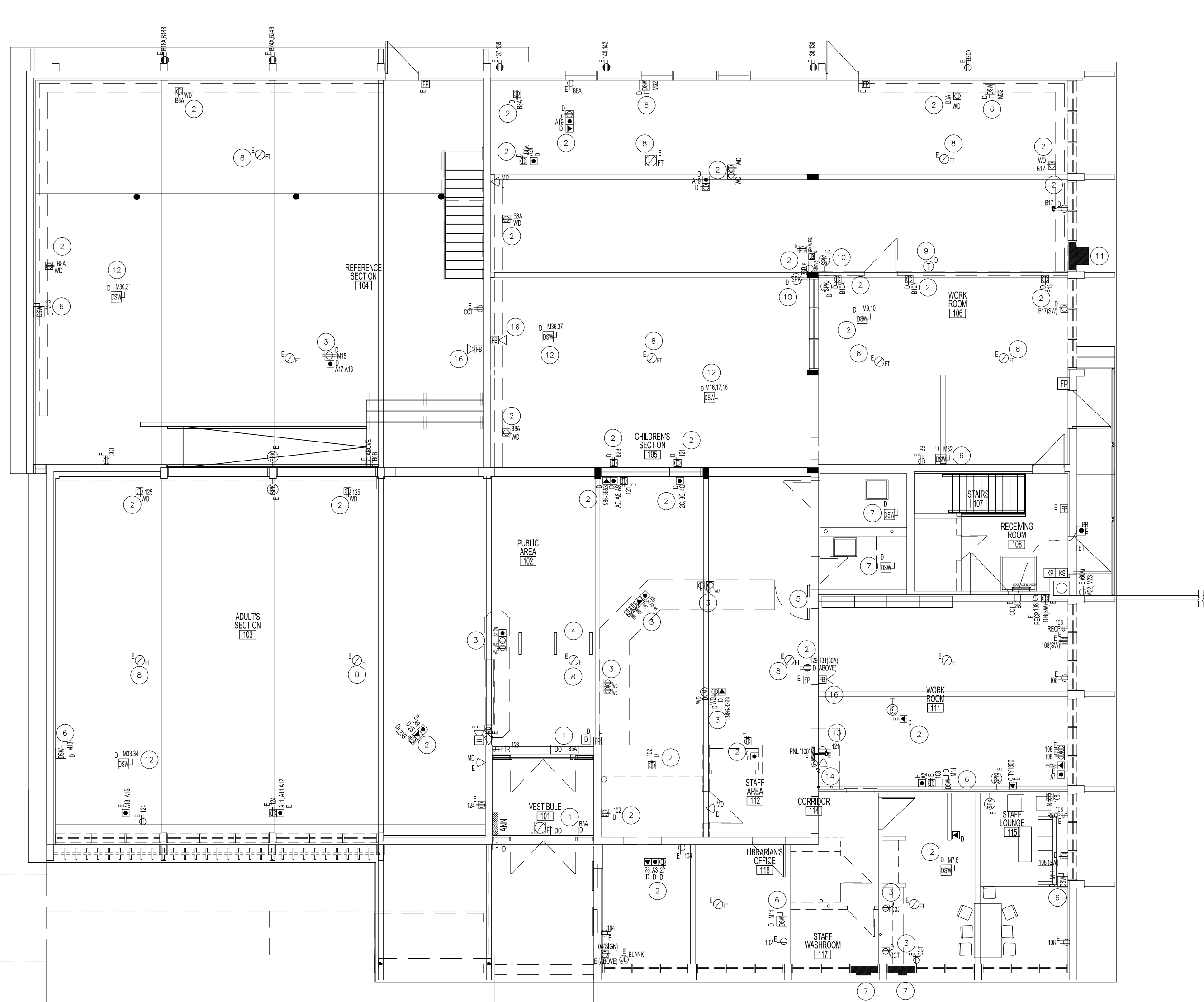


MEZZANINE FLOOR PLAN - DEMOLITION - POWER, DATA AND COMMUNICATION  
SCALE: 1/8"=1'-0"



BASEMENT FLOOR PLAN - DEMOLITION  
POWER, DATA AND COMMUNICATION  
SCALE: 1/8"=1'-0"



MAIN FLOOR PLAN - DEMOLITION - POWER, DATA AND COMMUNICATION  
SCALE: 1/8"=1'-0"

- DEMO NOTES:**
- EXISTING DEVICES ARE TO REMAIN WHERE THEY ARE NOT INDICATED TO BE REMOVED. WHERE DEVICES ARE IN WALL OR CEILING CONSTRUCTION TO BE DEMOLISHED, THESE DEVICES ARE TO BE REMOVED AND WIRING BROUGHT BACK TO THE ORIGINATING PANEL OR TO A SUITABLY MARKED ACCESSIBLE JUNCTION BOX.
  - ANY WIRING REUSED MUST HAVE SUITABLE INSULATION INTEGRITY.
  - RETAIN ALL SOUND AND SECURITY DEVICES AND EQUIPMENT FOR RE-USE.
  - REPLACE ANY DEVICES OR EQUIPMENT DAMAGED DURING DEMOLITION
  - EXISTING CIRCUIT NUMBERS ARE NOT CONFIRMED. CONTRACTOR TO TEST ALL DEVICES TO DETERMINE ACTUAL CIRCUITING. RECORD ON AS-BUILT AND REVISE PANEL DIRECTORIES TO SUIT.
  - REFER TO ARCH AND MECH DRAWINGS FOR ADDITIONAL ITEMS TO DISCONNECT. SEE A1 FOR WORK IN CRAWLSPACE.
  - REMOVE ALL SURFACE MOUNTED RACEWAYS FROM U/S OF ROOF DECK. REEFED FROM TOP AS PER DETAIL ON E4.

ELECTRICAL LEGEND (SUPPLY & INSTALL UNLESS OTHERWISE INDICATED)	
TYPE	DESCRIPTION
Ⓧ	DUPLEX RECEPTACLE
Ⓧ	HEIGHT IN INCHES ABOVE FINISH FLOOR TO CENTERLINE OF DEVICE
Ⓧ	SPLIT DUPLEX RECEPTACLE
Ⓧ	FLOOR PEDESTAL DOUBLE DUPLEX RECEPTACLE
Ⓧ	DUPLEX RECEPTACLE, WD = MOUNTED ON WOOD FURNISHING
Ⓧ	FLOOR PEDESTAL DUPLEX RECEPTACLE
Ⓧ	LIGHT SWITCH, SINGLE
Ⓧ	OCCUPANCY SENSOR SWITCH WITH AUTO-ON & AUTO-OFF, LUTRON MAESTRO MODEL MS-OPSSAM, WHITE
Ⓧ	PUSH PLATE (36") SWITCH FOR AUTOMATIC DOOR
Ⓧ	PHOTOELECTRIC EYE FOR EXISTING OUTDOOR LUMINAIRES (EXIST)
Ⓧ	CEILING MOUNT OCCUPANCY SENSOR, 120 V, WHITE, LEVITON MODEL ODOCS-11W
Ⓧ	WALL MOUNT OCCUPANCY SENSOR, DUAL (ULTRASONIC & PASSIVE INFRARED) 33MHz, HUBBELL CAT No: ATD1600W, WITH CONTROL UNIT CU300A PROVIDES 24VDC FOR 1 TO 4 SENSORS.
Ⓧ	DISCONNECT SWITCH
Ⓧ	DUAL BUTTON HOLD-UP SWITCH, MOMENTARY BUTTON, AUTO-RESET, AMSECO MODEL HUSD-15BM
Ⓧ	AUTOMATED EXTERNAL DEFIBRILLATOR WITH SELF CONTAINED ALARM
Ⓧ	AUTOMATIC DOOR OPERATOR, SEE ARCH. DWG A2
Ⓧ	PANEL BOARD (FLUSH/SURFACE MOUNT)
Ⓧ	JUNCTION BOX (RECESSED)
Ⓧ	DIGITAL CONTROLLER FOR EVAPORATOR, WIRED WALL MOUNT, MITSUBISHI PAR-30MAAU-J
Ⓧ	CENTRAL CONTROLLER FOR EVAPORATOR, MITSUBISHI AG-150, INCLUDES 24VDC POWER SUPPLY UNIT PAC-SC31KUA
Ⓧ	MINI CONTROLLER FOR RTU-1, NETWORKABLE THERMOSTAT, & CONTROLLER, WITH BUILT-IN TEMPERATURE SENSOR, MODULATING ECONOMIZER CONTROL, MULTIPLE ANALOG CONTROL INPUTS, CO2 FOR DEMAND CONTROL VENTILATION, AND BACHnet. A40N R8570,
Ⓧ	CARBON DIOXIDE (CO2) TRANSMITTER/SENSOR, QEL MODEL CTS-M20 WITH POWER SUPPLY
Ⓧ	DIRECT-DRIVE ROOF EXHAUST FAN, SEE MECHANICAL DWG FOR SPECIFICATION.
Ⓧ	FIRE ALARM MANUAL PULL STATION (EXIST)
Ⓧ	FIRE BELL (EXIST)
Ⓧ	HEAT DETECTOR, CEILING RECESSED (EXIST)
Ⓧ	HEAT DETECTOR, CEILING SURFACE MOUNT (EXIST)
Ⓧ	PUBLIC ADDRESS MICROPHONE INPUT JACK
Ⓧ	PUBLIC ADDRESS SPEAKER (EXIST)
Ⓧ	DATA PORT TERMINATE TO EXISTING PATCH PANEL IN BASEMENT WIRING RM
Ⓧ	PHONE PORT
Ⓧ	KEY PADDISPLAY - SECURITY (EXIST)
Ⓧ	KEY SWITCH - SECURITY (EXIST)
Ⓧ	HORN - SECURITY (EXIST)
Ⓧ	MOTION DETECTOR-SECURITY

- KEY NOTES:**
- DISCONNECT EXISTING AUTO DOOR POWER AND CONTROLS. MODIFY AND RE-USE TO CONNECT TO NEW SLIDING DOORS.
  - DISCONNECT EXISTING POWER, DATA AND VOICE OUTLETS, WIRE AND CONDUIT BACK TO SOURCE, IE: PANEL, PATCH PANEL, ETC.
  - DISCONNECT EXISTING POWER, DATA AND VOICE OUTLETS AT MILLWORK, CAP AND EXTEND TO NEW LOCATIONS AT NEW MILLWORK UNIT. INCLUDE ALL SYSTEMS PRESENT SUCH AS P.A SYSTEM AND POS SYSTEM. REFER TO ARCH. DWG.
  - DISCONNECT EXISTING SECURITY SCAN PANELS AND WIRING.
  - RELOCATE AED CABINET AND WIRING TO NEW LOCATION.
  - DISCONNECT EXISTING EVAPORATOR UNIT CONNECTION AND DISCONNECT. PROVIDE NEW DISCONNECT AND RECONNECT CIRCUIT TO NEW UNIT.
  - DISCONNECT EXISTING EXHAUST FAN WIRING BACK TO SOURCE. INCLUDE REMOVAL OF WALL TIMER.
  - DISCONNECT EXISTING HEAT DETECTOR AND WIRING. UNIT IS TO BE RELOCATED AWAY FROM BEAM 200mm. TYPICAL FOR ALL THAT ARE INSTALLED WITHIN 200mm OF BEAM.
  - RELOCATE EXISTING THERMOSTAT TO NEW LOCATION
  - DISCONNECT AND REMOVE EXISTING SOUND SYSTEM AS REQUIRED FOR DEMOLITION. SAVE AND RE-USE EQUIPMENT AND WIRING THROUGHOUT. RE-INSTALL BACK IN THE VICINITY OF REMOVAL.
  - DISCONNECT EXISTING MOTORIZED DAMPER AND WIRING BACK TO SOURCE.
  - DISCONNECT WIRING TO EXISTING ROOF MOUNTED UNIT. RE-USE CIRCUIT AND EXTEND WIRING TO FEED NEW UNIT. ALL DAMAGED CONDUIT AND CABLE TO BE REPLACED WITH NEW. ENSURE NEW DISCONNECTS ARE PROPERLY RATED AND ARE W/P.
  - DISCONNECT ALL RELATED MECHANICAL CONTROLS AND REMOVE ALL REDUNDANT WIRING.
  - RELOCATE MOTION DETECTOR AND ALL OTHER SECURITY SYSTEM EQUIPMENT AS NECESSARY TO SUIT CONSTRUCTION. VERIFY EXACT NEW LOCATIONS ON SITE.
  - ALLOW FOR ALL WORK NECESSARY FOR DEMOLITION OF ELECTRICAL IN CONFINED SPACE.
  - REMOVE EXISTING BELL AND REPLACE WITH A NEW HORN/STROBE UNIT.

THESE DRAWINGS SHALL NOT BE SCALED

THE CONTRACTOR SHALL VISIT THE SITE AND SATISFY HIMSELF ALL DIMENSIONS, DATUM, AND DETAILED INFORMATION SHOWN ARE CORRECT.

THE CONTRACTOR IS TO REVIEW AND COORDINATE ALL ARCHITECTURAL, STRUCTURAL, MECHANICAL AND ELECTRICAL DRAWINGS FOR ADDITIONAL OPENINGS THROUGH FLOORS, WALLS, AND CEILINGS FOR DUCT, PIPE & ELECTRICAL RISERS AND ALL OPENINGS NOT SHOWN ON DRAWINGS.

THE MAIN ELECTRICAL PANEL IS 1" AND IS LOCATED IN THE BASEMENT ELECTRICAL ROOM BELOW THE ELECTRICAL METER.

SUB-ELECTRICAL PANEL 'B' (MMS 2001) IS ALSO LOCATED IN THE BASEMENT ELECTRICAL ROOM.

SUB-ELECTRICAL PANEL '100' IS LOCATED ON THE MAIN FLOOR BEHIND THE CIRCULATION COUNTER.

ALL OPENINGS THROUGH FLOOR ASSEMBLIES INCLUDING FLOORS AND CEILINGS ARE TO BE FIRE STOPPED AND SEALED WITH UL-C APPROVED FIRE STOPPING TO MAINTAIN THE INTEGRITY OF THE FIRE SEPARATION, AND PROVIDE A SMOKE-TIGHT BARRIER.

ALL PRODUCTS AND MATERIALS TO BE USED AND INSTALLED SHALL CONFORM WITH MANUFACTURER'S SPECIFICATIONS, APPLICABLE CODES AND AUTHORITY HAVING JURISDICTION.

THE CONTRACTOR SHALL BE RESPONSIBLE TO PATCH AND MAKE GOOD ALL EXISTING CONSTRUCTION AFFECTED BY THE REMOVAL OF ALL ITEMS FORMING PART OF THE DEMOLITION WORK.

COORDINATE WHERE NEW FLOORING AND BASE IS TO BE INSTALLED IN EXISTING AREAS (REFER TO FLOOR PLAN AND ROOM SCHEDULE) THE EXISTING FLOORING SURFACE AND BASE MUST BE REMOVED, UNLESS OTHERWISE NOTED. ALL FLOOR SURFACES SHALL BE PREPARED IN ACCORDANCE TO MANUFACTURER'S RECOMMENDATIONS FOR INSTALLATION OF NEW FLOORING.

COORDINATE WHERE PAINTING OF EXISTING WALLS IS INDICATED ON THE ROOM SCHEDULE. THESE WALLS MUST BE CLEANED OF ANY EXISTING WALL COVERING, PATCHED & PREPARED TO ACCEPT NEW MATERIAL, UNLESS OTHERWISE NOTED.

ALL NEW LUMINAIRES & NEW RECEPTACLES TO BE CONNECTED TO APPROPRIATE PANELS.

GENERAL DUTY RECEPTACLES SHALL BE WHITE & CSA APPROVED, C/W STAINLESS STEEL TRIM PLATES MOUNTED 18" ABOVE FINISHED FLOOR OR OTHERWISE NOTED.

NEW THERMOSTATS, OCCUPANCY LIGHT SWITCHES & FIRE ALARM PULL STATIONS SHALL BE MOUNTED 47" ABOVE FINISHED FLOOR OR OTHERWISE NOTED.

SUPPLY & INSTALL LAMACID NAME PLATES ON ALL INCLUDING EXISTING PANEL, BOARDS, EQUIPMENT, SWITCHES & RECEPTACLES. PANEL SCHEDULE SHALL BE TYPED & INSERTED TO INSIDE OF ASSOCIATED PANEL DOOR SLEEVE PROTECTOR.

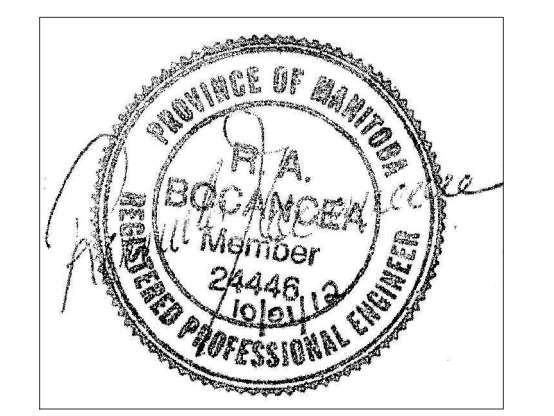
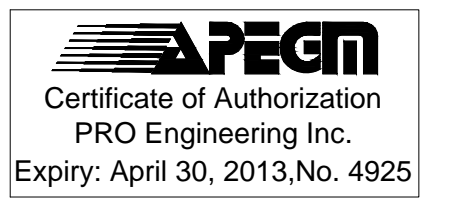
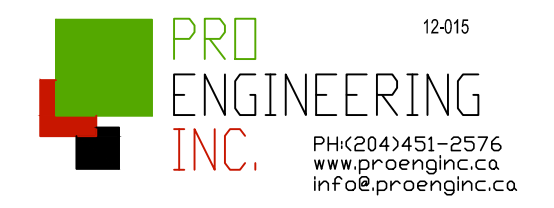
ALL ABANDONED ELECTRICAL FIXTURES, COMPONENTS, RECEPTACLE & DATA WIRING SHALL BE REMOVED BACK TO SOURCE & TERMINATED AS PER APPLICABLE CODES.

RECONNECT & TEST ALL FIRE PREVENTION EQUIPMENT.

ALL LUMINAIRES & EQUIPMENT SHOWN CEILING MOUNTED SHALL HAVE ALL CONDUITS INSTALLED ON THE EXTERIOR SIDE OF THE ROOF DECK TERMINATING TO 2" DEEP OCTAGONAL BOX. SEE TYPICAL WOOD DECK CEILING OUTLET BOX INSTALLATION DETAIL DRAWING E4.

ABBREVIATIONS	
DESCRIPTION	
A	AMPERE, AMPACITY
A/C	AIR CONDITIONER
AFF	ABOVE FINISH FLOOR
CCT	CIRCUIT, CCT: C-PANEL; CT= CIRCUIT
D	DEMOLITION
DS	DOOR SWITCH
DSW	DISCONNECT SWITCH
DWG	DRAWING
E, EXIST	EXISTING
FMS	FACILITY MANAGEMENT SYSTEM
GFCI	GROUND FAULT CIRCUIT INTERRUPTER
GM	GAS METER
HTR	HEATER
HVAC	HEATING, VENTILATING AND AIR CONDITIONING
HZ	HERTZ
JB	JUNCTION BOX
M	METER
MD	MOTION DETECTOR
MUA	MAKE-UP AIR UNIT
N	NEW
NTS	NOT TO SCALE
OS	OCCUPANCY SENSOR
PB	PUSH BUTTON
PCNT	PEOPLE COUNTER
PNL	PANEL
RECP	RECEPTACLE
SW	SWITCH
TYP	TYPICAL
V	VOLT
VRF	VARIABLE REFRIGERANT FLOW
W	WATT
WD	WOOD FURNISHING (MOUNTED ON)
WP	WEATHERPROOF

NOTES:



2	ISSUED FOR TENDER	KO	10/01/12
1	ISSUED FOR TENDER	KO	10/01/12

No.	REVISION/DESCRIPTION	BY	DATE
SEAL			

DRAWN	DTAKO	CHECKED	KO	DESIGNED	DTAKO	APPROVED	RB
DATE	2012.07.24	USER	APPROVAL				

THE CITY OF WINNIPEG  
PLANNING, PROPERTY AND  
DEVELOPMENT DEPARTMENT  
MUNICIPAL ACCOMMODATIONS DIVISION  
3-65 GARRY STREET, R3C 4K4

PROJECT  
FORT GARRY LIBRARY  
INTERIOR & EXTERIOR REFURBISHING  
DESIGN  
1380 PEMBINA HIGHWAY

SHEET TITLE  
MAIN, MEZZANINE & BSMT POWER AND  
SYSTEMS DEMOLITION  
ELECTRICAL

SCALE	PROJECT No:	SHEET No:
AS SHOWN	2011-096	E1