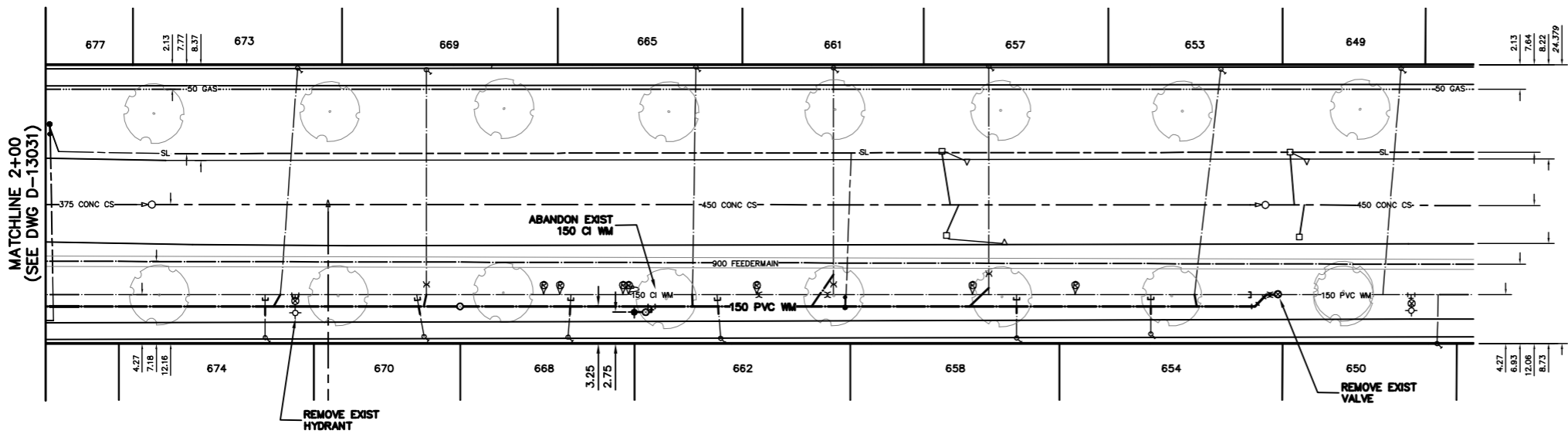


NOTE: CHAINAGES SHOWN ARE ALONG
E R OF WAVERLEY ST

WAVERLEY STREET

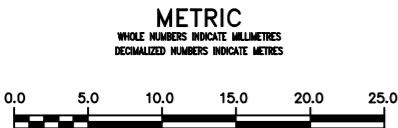


WATER SERVICE INFORMATION

ADDRESS	SIZE (mm) MATERIAL (STREET)	SIZE (mm) MATERIAL (PROP.)	SHORT & LONG MEASUREMENT	CORP. LOCATION	REMARKS
653 WAVERLEY ST	20	20	--	2.3 S OF S/C	--
RESIDENTIAL	COPPER	COPPER	177.81>NNL GRANT		
654 WAVERLEY ST	20	20	--	OPP S/C	--
RESIDENTIAL	COPPER	COPPER	171.68>NNL GRANT		
657 WAVERLEY ST	20	20	--	OPP S/C	--
RESIDENTIAL	COPPER	COPPER	157.53>NNL GRANT		
658 WAVERLEY ST	25	25	--	OPP S/C	--
RESIDENTIAL	COPPER	COPPER	159.92>NNL GRANT		
661 WAVERLEY ST	25	25	--	OPP S/C	--
RESIDENTIAL	COPPER	COPPER	143.78>NNL GRANT		
662 WAVERLEY ST	20	20	--	0.3 S OF S/C	--
RESIDENTIAL	COPPER	COPPER	134.06>NNL GRANT		
665 WAVERLEY ST	20	20	--	0.3 S OF S/C	--
RESIDENTIAL	COPPER	COPPER	131.82>NNL GRANT		
668 WAVERLEY ST	20	20	--	0.3 N OF S/C	--
RESIDENTIAL	COPPER	COPPER	120.79>NNL GRANT		
669 WAVERLEY ST	20	20	--	OPP S/C	--
RESIDENTIAL	COPPER	COPPER	108.35>NNL GRANT		
670 WAVERLEY ST	20	20	--	0.6 S OF S/C	--
RESIDENTIAL	COPPER	COPPER	108.12>NNL GRANT		
673 WAVERLEY ST	20	20	--	1.5 S OF S/C	--
RESIDENTIAL	COPPER	COPPER	96.12>NNL GRANT		
674 WAVERLEY ST	20	20	--	OPP S/C	--
RESIDENTIAL	COPPER	COPPER	94.25>NNL GRANT		

*SERVICES TO BE RENEWED TO R ALL OTHERS TO BE RECONNECTED

NOTE: ALL VALVES TO BE INSTALLED
COUNTER-CLOCKWISE TO CLOSE



WARNING
IF POWER EQUIPMENT OR EXPLOSIVES ARE TO BE USED FOR EXCAVATION ON THIS PROJECT THE CONTRACTOR MUST:
1) NOTIFY THE GAS COMPANY OF THE PROPOSED LOCATION OF EXCAVATION.
2) TAKE PRECAUTION TO AVOID DAMAGE TO GAS COMPANY INSTALLATIONS.
SEE PROVINCIAL REGULATION 219/72 FOR DETAILS

LOCATION APPROVED UNDERGROUND STRUCTURES
SUPV. U/G STRUCTURES COMMITTEE DATE
NOTE:
LOCATION OF UNDERGROUND STRUCTURES AS SHOWN ARE BASED ON THE BEST INFORMATION AVAILABLE BUT NO GUARANTEE IS GIVEN THAT ALL EXISTING UTILITIES ARE SHOWN OR THAT THE GIVEN LOCATIONS ARE EXACT. CONFIRMATION OF EXISTENCE AND EXACT LOCATION OF ALL SERVICES MUST BE OBTAINED FROM THE INDIVIDUAL UTILITIES BEFORE PROCEEDING WITH CONSTRUCTION.

B.M. ELEV.	
CONSTRUCTION COMPLETION DATE: YYYY MM DD	
DESIGNED BY	NC
CHECKED BY	SC
DRAWN BY	CJH
APPROVED BY	KZ
SCALE:	
HORIZONTAL	1:250
VERTICAL	1:50
DATE	2012 07 31
DATE	JULY 30, 2012

NO.	ADDDUM REVISIONS (TEXT MASKING)	DATE	BY
1	ADDDUM REVISIONS (TEXT MASKING)	12/08/02	CH
NO.	REVISIONS	DATE	BY

ENGINEER'S SEAL
ORIGINAL SIGNED
By S.R.J. COUNROYER
12-07-30
CONSULTANT DRAWING NUMBER

THE CITY OF WINNIPEG
WATER AND WASTE DEPARTMENT
ENGINEERING DIVISION
2012 WATERMAIN RENEWALS
SHEET 9 OF 9
CITY DRAWING NUMBER
WAVERLEY STREET
75 N OF GRANT AVENUE TO
200 N OF GRANT AVENUE
D-13032