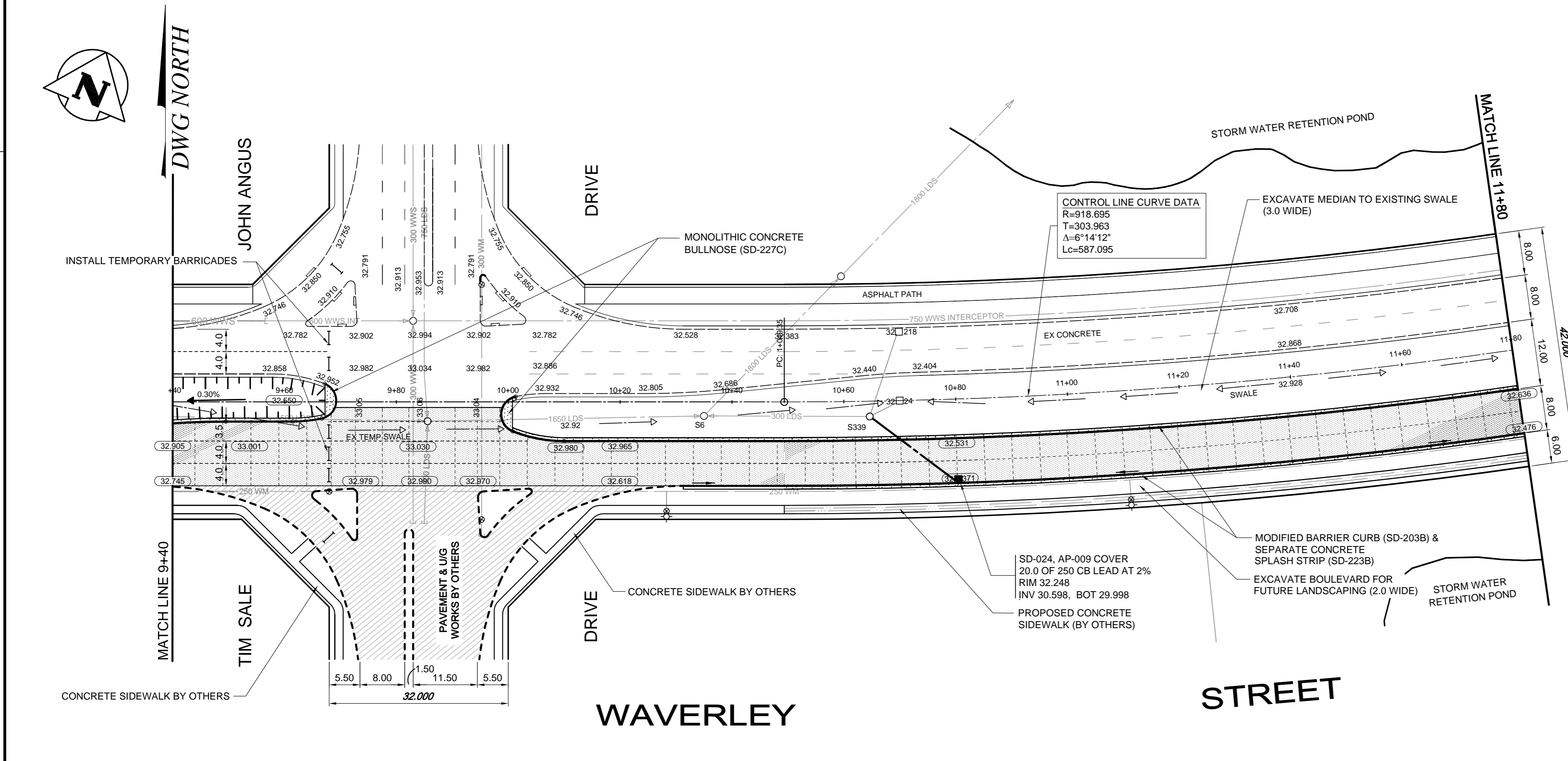


WAVERLEY STREET CROSS SECTION (STA 10+31.3 TO STA 14+95.6)

NTS



SEE DRAWING C1004

CONSTRUCTION NOTES

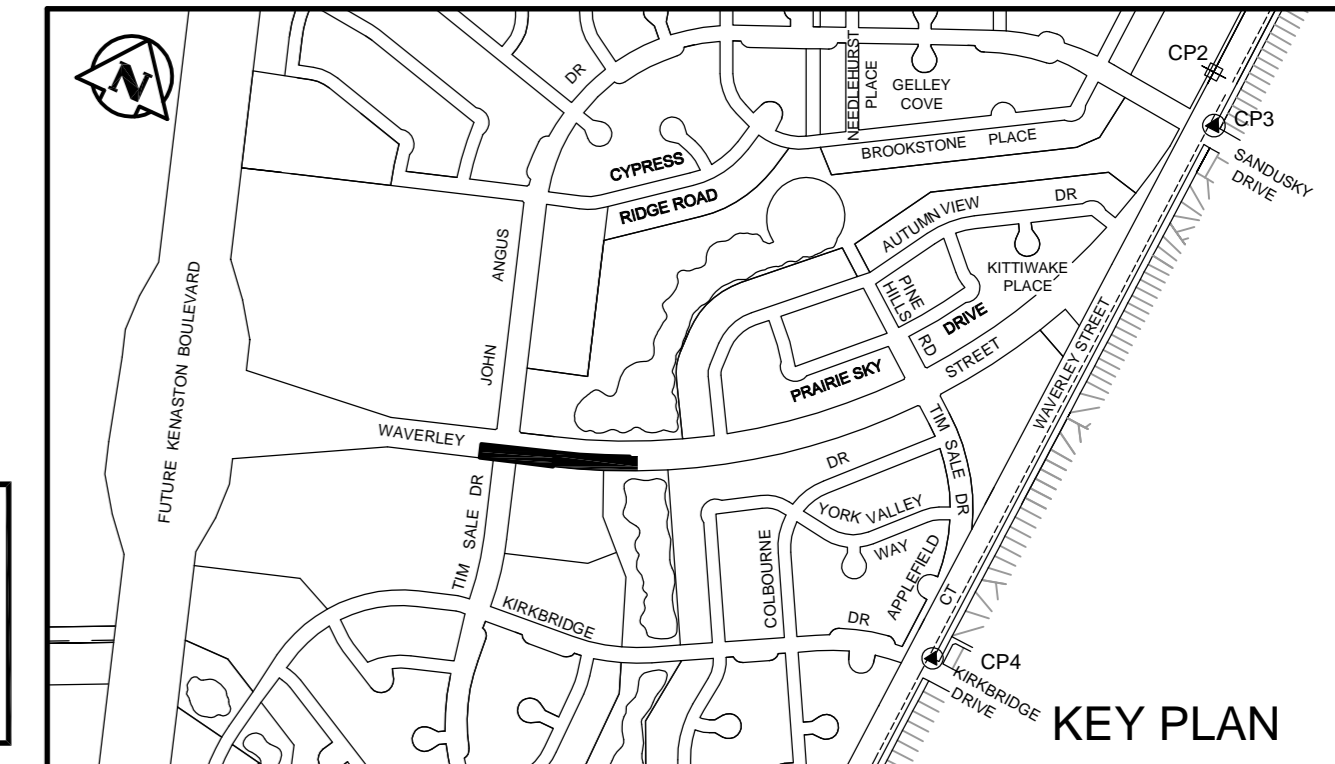
1. ALL PAVEMENT DIMENSIONS ARE TO BACK OF CURB.
2. ALL BACKFILL UNDER BOULEVARD TO BE CLASS 4 UNLESS OTHERWISE NOTED.
3. ALL PIPE UNDER EXISTING AND FUTURE PAVEMENT TO BE INSTALLED USING TRENCHLESS METHODS. WHERE NOT POSSIBLE, OPEN CUT WITH CLASS 2 BACKFILL.
4. ALL CURB RAMP IN ACCORDANCE WITH SD-229A STANDARD LAYOUT, C & E.
5. SUBDRAINS AT LOW POINTS (5.0m EACH WAY AS PER SD-245).

GENERAL NOTES

1. CHAINAGE IS ALONG CENTRE LINE OF WAVERLEY STREET R.O.W.
2. SEE DRAWING C1009 FOR WAVERLEY STREET GEOMETRICS.
3. SEE DRAWING C1006 TO C1008 FOR WAVERLEY STREET UNDERGROUND.

Coordinate Control Survey Monuments

No.	Description	Northing	Easting	Elevation
CP 1	IB CP1	3000.000	10000.000	232.535
CP 2	IB CP3	2741.671	10000.000	232.363
CP 3	GBM82024	2675.060	10035.366	232.259
CP 4	GBM82025	1827.090	10031.834	232.917



APEGM
Certificate of Authorization
Wardrop Engineering Inc.
No. 195 Expiry: April 30, 2013

EXISTING	LEGEND-PLAN	PROPOSED	EXISTING	LEGEND-PLAN	PROPOSED	EXISTING	LEGEND-PLAN	PROPOSED
150 WM	WATERMAIN	150 WM	SWALE	RIGHT-OF-WAY	MANHOLE	GAS	LOCATION APPROVED UNDERGROUND STRUCTURES	B.M. ELEV.
400 FM	FEEDERMAIN	400 FM	MANHOLE	GAS	CATCHBASIN	HYDRO	DATE	DESIGNED BY
300 LDS	LAND DRAINAGE SEWER	300 LDS	CATCHBASIN	HYDRO	HYDRO BOX	MTS	SUPV. U/G STRUCTURES COMMITTEE	CHECKED BY
250 WWS	WASTEWATER SEWER	250 WWS	HYDRO BOX	MTS	HYDRO POLE	SPRINKLER	DATE	APPROVED BY
300 CS	COMBINED SEWER	300 CS	HYDRO POLE	SPRINKLER	ANCHOR	ELEVATION	NOTE:	RELEASED FOR CONSTRUCTION
200 FCM	FORCEMAIN	200 FCM	ANCHOR	ELEVATION	TREE	CONCRETE	LOCATION OF UNDERGROUND STRUCTURES AS SHOWN ARE BASED ON THE BEST INFORMATION AVAILABLE. BUT NO GUARANTEE IS GIVEN THAT ALL EXISTING UTILITIES ARE SHOWN OR THAT THE GIVEN LOCATIONS ARE EXACT. CONFIRMATION OF EXISTENCE AND EXACT LOCATION OF ALL SERVICES MUST BE OBTAINED FROM THE INDIVIDUAL UTILITIES BEFORE PROCEEDING WITH CONSTRUCTION.	CONSULTANT DRAWING NO.
○	JUNCTIONS	○	LIGHT STANDARD	CONCRETE	SURVEY BAR	CONCRETE		1200070300-DWG-C1003-01
○	HYDRANT	○	BARRICADE	CONCRETE	BARRICADE	CONCRETE		
○	VALVE	○	BARRICADE	CONCRETE	BARRICADE	CONCRETE		
○	CURB STOP	○	BARRICADE	CONCRETE	BARRICADE	CONCRETE		
○	LEGEND-PLAN	○	BARRICADE	CONCRETE	BARRICADE	CONCRETE		

NO.	REVISIONS	DATE	BY
01	ISSUED FOR ADDENDUM No. 1	12.06.19	TF
00	ISSUED FOR TENDER	12.06.11	TF

TETRA TECH

DESIGNED BY: TF
DRAWN BY: GMD
HOR. SCALE: 1:500
VERTICAL: 1:20
DATE: 12.04.12

PRELIMINARY DRAWING

NOT TO BE USED FOR CONSTRUCTION

THE CITY OF WINNIPEG
PUBLIC WORKS DEPARTMENT
ENGINEERING DIVISION

WAVERLEY STREET EXTENSION
KENASTON BOULEVARD (FUTURE) TO TIM SALE DRIVE

WAVERLEY STREET (EASTBOUND LANES)
28m WEST OF TIM SALE DRIVE TO
101m WEST OF AUTUMNVIEW DRIVE

CITY DRAWING NUMBER: C1003
SHEET 3 OF 11