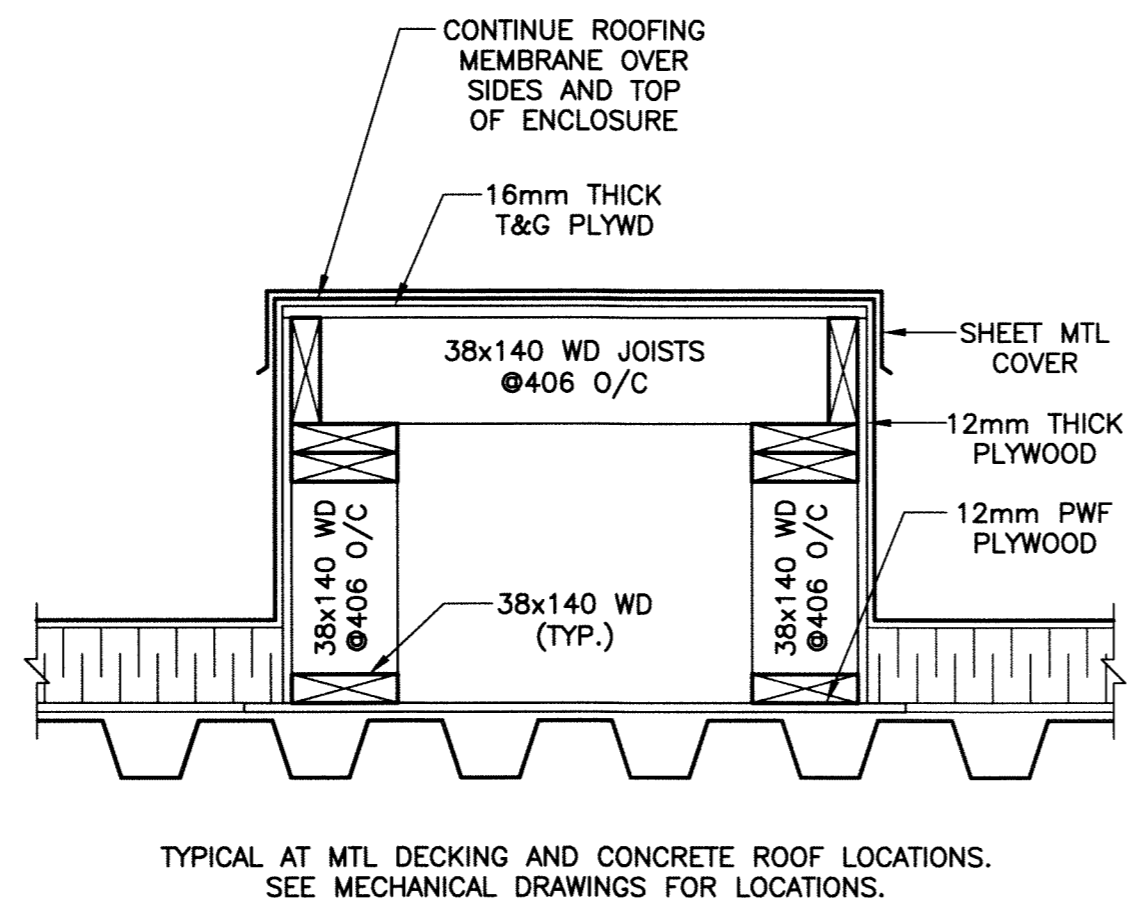
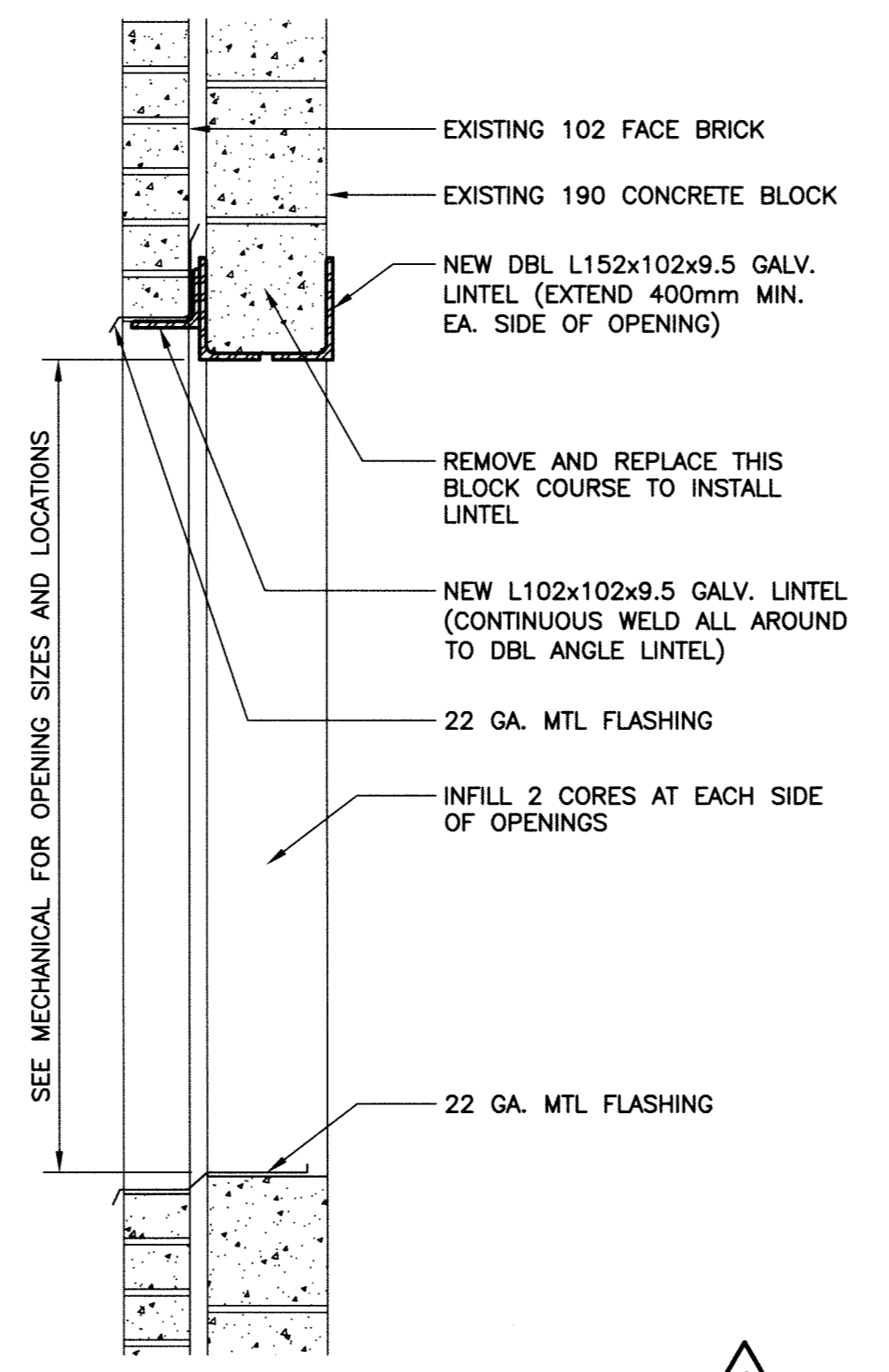


2 WALL OPENING - SECTION
 SCALE: 1:10mm (24"x36")
 1:20mm (11"x17")



3 PIPE PENETRATION - DETAIL
 SCALE: 1:10mm (24"x36")
 1:20mm (11"x17")



4 WALL OPENING - SECTION
 SCALE: 1:10mm (24"x36")
 1:20mm (11"x17")

NOTE:
 MECHANICAL UNIT TO BE INSTALLED THROUGH ONE OF THE OPENINGS. SIZE OPENING TO SUIT AND REDUCE TO SUIT LOUVRE. SECOND OPENING TO BE SIZED TO SUIT LOUVRE.



B.M.				
ELEV.				
DESIGNED BY	RJL	CHECKED BY	JMW	
DRAWN BY	MB	APPROVED BY		
1	RE-ISSUED FOR TENDER	12/04/23		
0	ISSUED FOR TENDER	12/03/27	RJL	
NO.	REVISIONS	DATE	BY	DATE

KGS GROUP
 CONSULTING ENGINEERS & PROJECT MANAGERS
 WINNIPEG (204) 896-1209
 THUNDER BAY (807) 345-2233

DESIGNED BY: RJL
 CHECKED BY: JMW
 DRAWN BY: MB
 APPROVED BY: [Signature]

HOR. SCALE: AS SHOWN
 VERTICAL: .

RELEASED FOR CONSTRUCTION: [Signature]

ENGINEER'S SEAL

 CONSULTANT DRAWING NO. P2-S03

THE CITY OF WINNIPEG
 PUBLIC WORKS DEPARTMENT

PROJECT TITLE: FORT ROUGE LEISURE CENTRE HVAC UPGRADE

SHEET OF: 003 OF 003

COMPUTER FILE NAME: 11-0107-02-P2-S03

CITY DRAWING NUMBER: [Blank]

PARTIAL PLANS, SECTION AND DETAILS