

**GENERAL NOTES:**

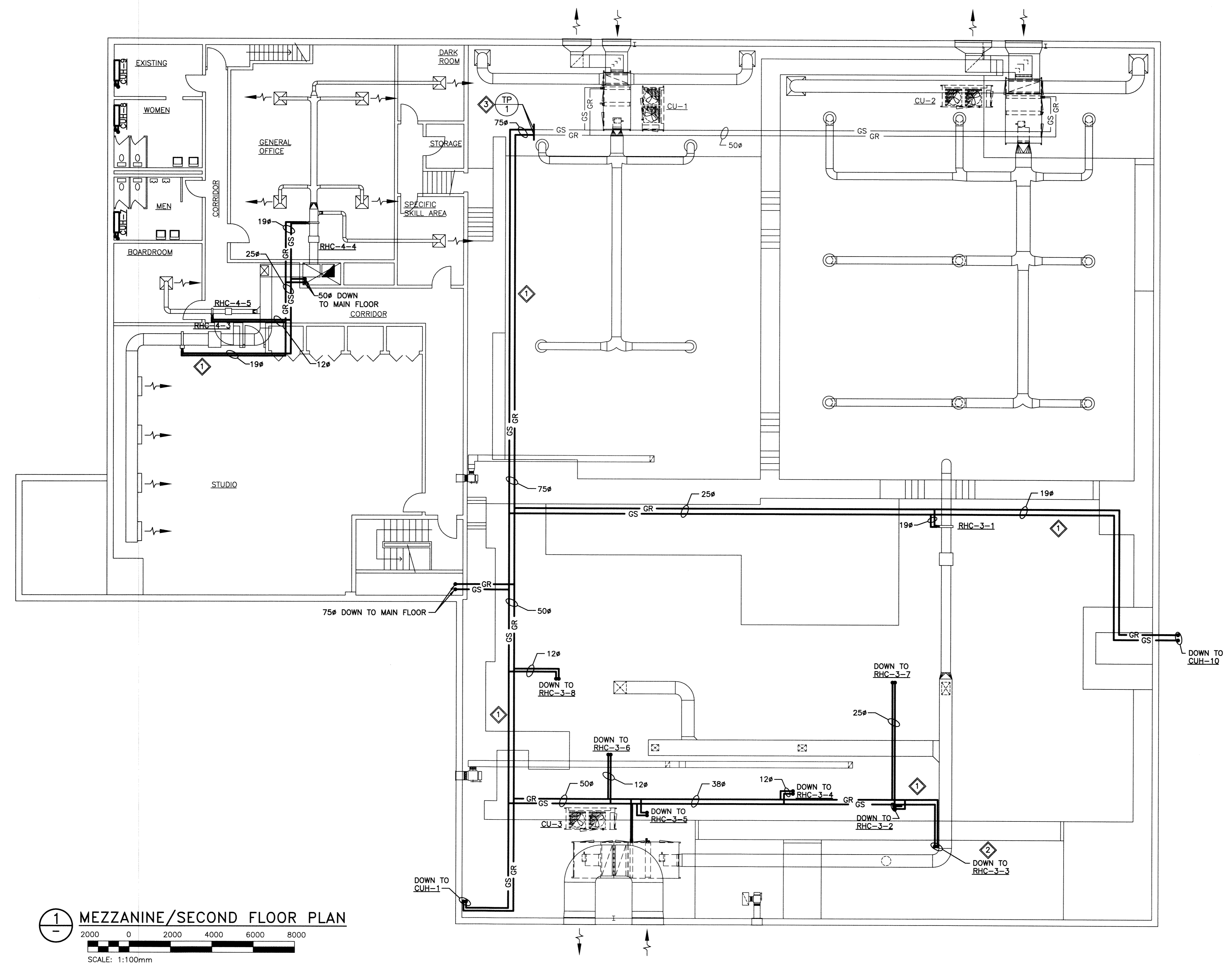
1. PERFORM WORK IN ACCORDANCE WITH ALL APPLICABLE CODES AND REGULATIONS.
2. REVIEW EQUIPMENT LOCATIONS WITH CONTRACT ADMINISTRATOR PRIOR TO INSTALLATION.
3. PIPE ROUTING INDICATED ON DRAWINGS ARE APPROXIMATE ONLY. CONFIRM IN FIELD. REROUTE PIPING TO ELIMINATE FIELD INTERFERENCES WITH BUILDING STRUCTURES, ELECTRICAL ETC. CONFIRM CHANGES WITH CONTRACT ADMINISTRATOR.
4. FIRE SEAL ALL PIPE PENETRATIONS TO MAINTAIN EXISTING FIRE SEPARATIONS.
5. REFER TO PIPING SCHEMATICS FOR DETAILS.
6. PROVIDE ACCESS DOORS FOR ALL EQUIPMENT AND DAMPERS LOCATED ABOVE DRYWALL CEILINGS.
7. PIPING TO CABINET UNIT HEATERS CAN BE SURFACE MOUNT. PIPING TO BE PROTECTED USING BENT PLATE SHROUD AS INDICATED IN STRUCTURAL DRAWINGS.

**KEY NOTES:**

1. INSTALL NEW GLYCOL SUPPLY (GS) AND GLYCOL RETURN (GR) PIPING AS INDICATED. (TYP)
2. RUN PIPING DOWN TO REHEAT COILS. REFER TO DRAWING M3 FOR REHEAT COIL LOCATIONS (TYP).
3. TIE NEW GLYCOL SUPPLY AND RETURN PIPING INTO GLYCOL SUPPLY AND RETURN PIPING INSTALLED DURING PREVIOUS PHASE.

**LEGEND:**

- NEW EQUIPMENT OR PIPING
- EXISTING EQUIPMENT/DUCTWORK/PIPING
- RHC RE-HEAT COIL
- GS GLYCOL SUPPLY
- GR GLYCOL RETURN
- CUH CABINET UNIT HEATER
- TP TIE IN POINT



1 MEZZANINE/SECOND FLOOR PLAN  
 2000 0 2000 4000 6000 8000  
 SCALE: 1:100mm

KGS FILE NO.: P:\PROJECTS\2011\11-0107-02\DWG\MECH\11-0107-02\_M4.dwg



B.M. ELEV.	
DESIGNED BY	PSS
CHECKED BY	RED
DRAWN BY	VJH
APPROVED BY	
1 RE-ISSUED FOR TENDER	12/04/23
0 ISSUED FOR TENDER	12/04/11
NO. REVISIONS	DATE BY DATE

**KGS GROUP**  
 CONSULTING ENGINEERS & PROJECT MANAGERS  
 WINNIPEG (204) 896-1209  
 THUNDER BAY (807) 345-2233

DESIGNED BY PSS  
 CHECKED BY RED  
 DRAWN BY VJH  
 APPROVED BY  
 HOR. SCALE: AS SHOWN  
 VERTICAL:  
 RELEASED FOR CONSTRUCTION:  
 DATE

ENGINEER'S SEAL  
  
 CONSULTANT DRAWING NO. P2-M04

**THE CITY OF WINNIPEG**  
 PUBLIC WORKS DEPARTMENT

PROJECT TITLE: FORT ROUGE LEISURE CENTRE HVAC UPGRADE - PHASE 2  
 SHEET OF: 001 OF 001  
 COMPUTER FILE NAME: 11-0107-02-P2-M04  
 CITY DRAWING NUMBER

SECOND/MEZZANINE FLOOR PLAN  
 NEW PIPING