



**SEWER JUNCTION INFORMATION  
FOR SEWER ID MA20003275**

REFERENCE—METERS WEST OF MANHOLE MH20003014

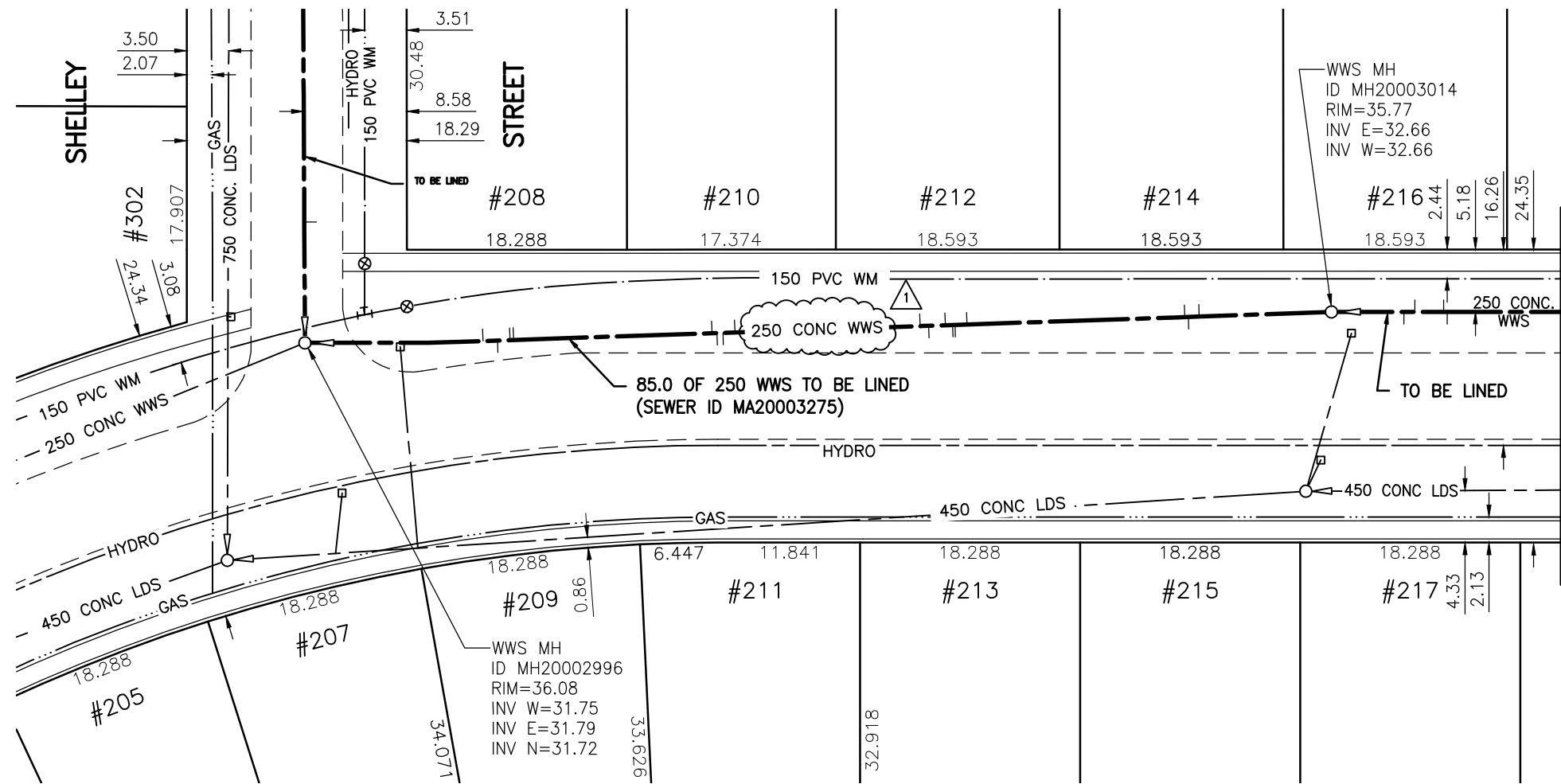
DIST. FROM REF. MANHOLE	JUNCTION DIA.	CLOCK REF.	SERVICE TYPE	DESCRIPTION
11.0	100	03	CN	CAPPED
11.9	100	10	CN	LIVE
12.2	100	02	CN	—
30.3	100	02	CN	CAPPED
31.3	100	09	CN	CAPPED
31.5	100	10	CN	—
32.1	100	02	CN	—
33.4	100	11	CNI	LIVE
34.1	100	01	CNI	—
49.6	100	02	CN	CAPPED
50.6	100	09	CN	CAPPED
51.1	100	10	CN	LIVE
51.4	100	02	CNI	LIVE
68.0	100	02	CN	CAPPED
68.3	100	02	CN	LIVE

REFERENCE—METERS EAST OF MANHOLE MH20002996

DIST. FROM REF. MANHOLE	JUNCTION DIA.	CLOCK REF.	SERVICE TYPE	DESCRIPTION
14.8	100	10	CN	—
16.0	100	03	CN	—

ALL JUNCTION INFORMATION  
BASED ON CCTV INSPECTION

**BROWNING BOULEVARD**



FOR CONTINUATION  
SEE DRAWING 9810



**WARNING**

IF POWER EQUIPMENT OR EXPLOSIVES ARE TO BE USED FOR EXCAVATION ON THIS PROJECT THE CONTRACTOR MUST:

- 1) NOTIFY THE GAS COMPANY OF THE PROPOSED LOCATION OF EXCAVATION.
- 2) TAKE PRECAUTION TO AVOID DAMAGE TO GAS COMPANY INSTALLATIONS.

SEE PROVINCIAL REGULATION 140/92 FOR DETAILS

**METRIC**

WHOLE NUMBERS INDICATE MILLIMETRES  
DECIMALIZED NUMBERS INDICATE METRES

BENCH MARK: S.W. Cor. Browning Blvd. & Pinehurst Cres., 19 mm dia. x 6.1 m I.B. in valve box, 0.3 m N. of S.L Browning Blvd. & 0.3 m W. of W.L. Pinehurst Cres.

Certificate of Authorization  
Stantec Consulting Ltd.  
No. 1301 Date: \_\_\_\_\_

BID OPPORTUNITY 927-2011

**LOCATION APPROVED  
UNDERGROUND STRUCTURES**

SUPV. U/G STRUCTURES COMMITTEE DATE

**NOTE:**

LOCATION OF UNDERGROUND STRUCTURES AS SHOWN ARE BASED ON THE BEST INFORMATION AVAILABLE BUT NO GUARANTEE IS GIVEN THAT ALL EXISTING UTILITIES ARE SHOWN OR THAT THE GIVEN LOCATIONS ARE EXACT. CONFIRMATION OF EXISTENCE AND EXACT LOCATION OF ALL SERVICES MUST BE OBTAINED FROM THE INDIVIDUAL UTILITIES BEFORE PROCEEDING WITH CONSTRUCTION.

B.M.	41-019	ELEV.	236.056m
NO.	REVISIONS	DATE	BY
1	ADDENDUM 1 - REVISED PIPE SIZE	12.01.09	J.K.H.



**Stantec Consulting Ltd.**

905 Waverley Street, Winnipeg, Manitoba  
Tel 204-489-5900 Fax 204-453-9012

DESIGNED BY	J.K.H.	CHECKED BY	W.A.B.
DRAWN BY	K.R.	APPROVED BY	H.A.K.
HOR. SCALE:	1:500	RELEASED FOR CONSTRUCTION:	
VERTICAL:	N/A	DATE	2011.10.04

ENGINEER'S SEAL

CONSULTANT DRAWING NO.  
**C-140**



**THE CITY OF WINNIPEG  
WATER AND WASTE DEPARTMENT**

**2011 SEWER RENEWALS  
BY CIPP LINING - CONTRACT 21  
BROWNING BOULEVARD  
1ST MH E. OF SHELLEY ST. (PL) TO  
MH AT SHELLEY ST. (PL)**

SHEET	OF
<b>43</b>	<b>119</b>
CAD FILE DRAWING NUMBER 13220c-140-766.dwg	
CITY DRAWING NUMBER <b>9809</b>	