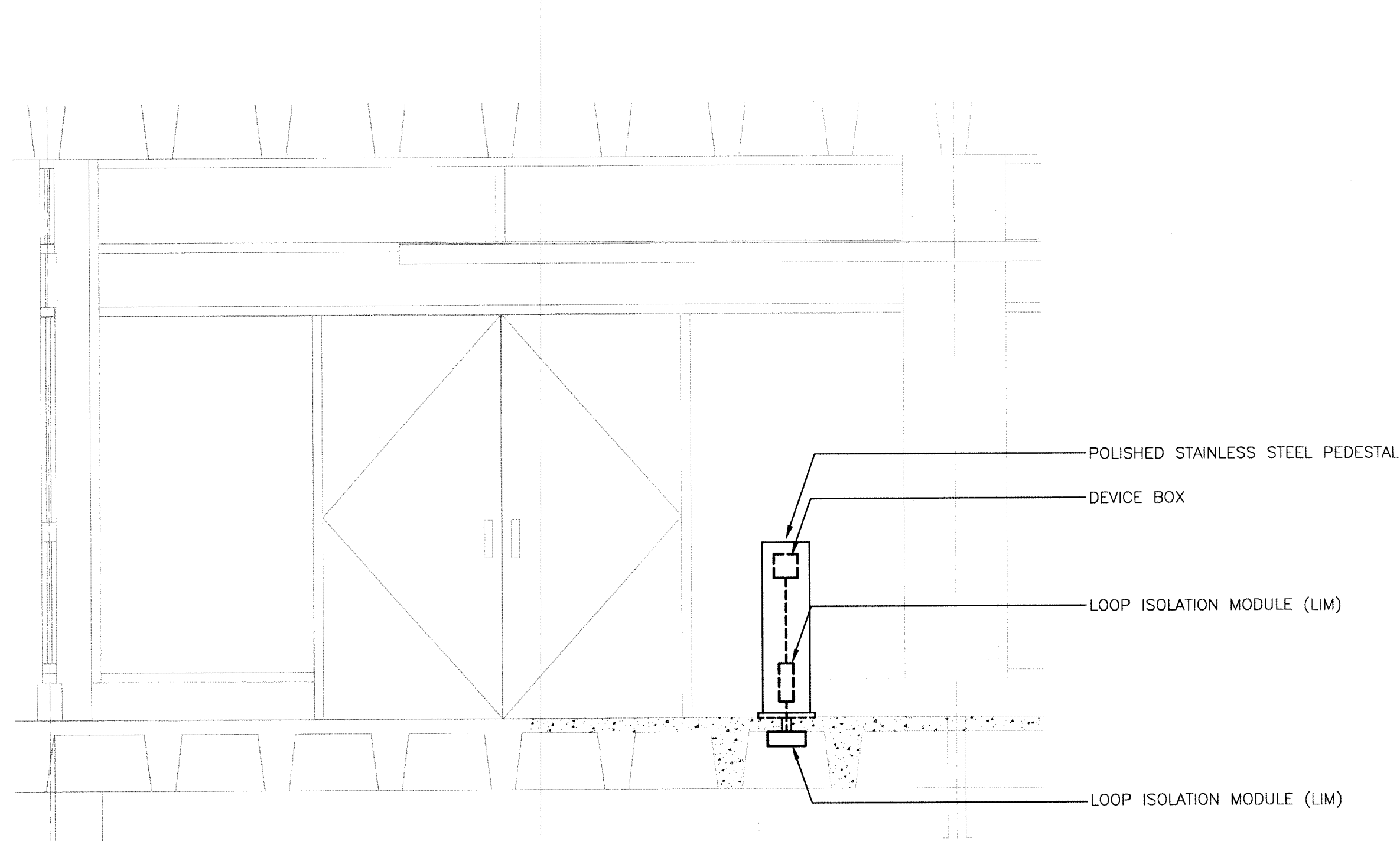
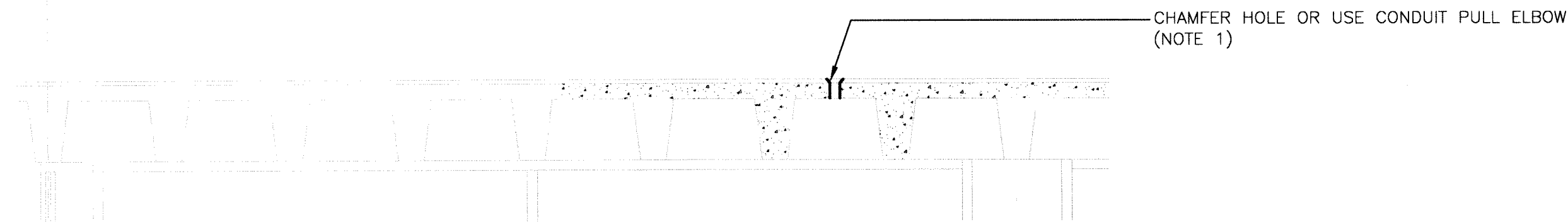


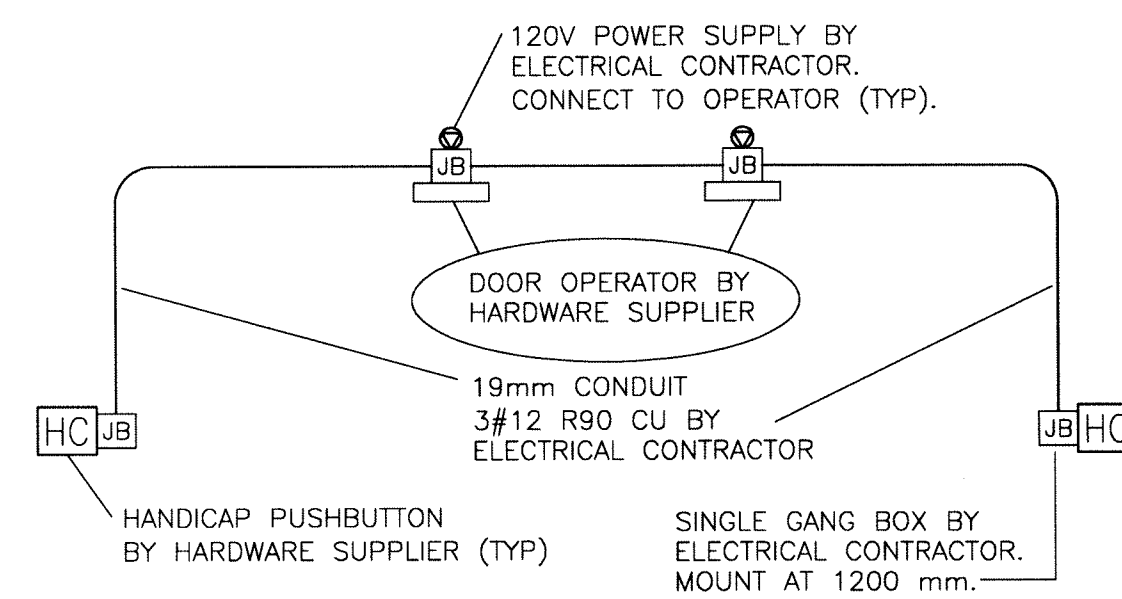
File Name: P:\Projects\2011\11-0902-04\Doc.Control\ToBeIssued\DWG\11-0902-04_E12.0-Rev 1.dwg -- Tab: E12.0 Plotted By: GNelson 12/03/07 [Wed 4:58pm]
24"x36" PLOT SCALE: 1:1



A
E4.0
FIRE ALARM PULLBOX PEDESTAL DETAIL
SCALE: N.T.S.



B
E7.0
TYPICAL ROOF PENETRATION DETAIL
SCALE: N.T.S.



DETAIL 'C' NOTES:

1. THIS CONTRACTOR TO MAKE ALL CONNECTIONS AND INSTALL ALL DEVICES AS SUPPLIED BY THE HARDWARE CONTRACTOR. INCLUDE ALL LOW VOLTAGE WIRING.
2. INTERLOCK ALL DOOR OPERATORS ON CONTROLLED DOORS WITH CARD ACCESS SYSTEM.

C
-
HANDICAP DOOR OPERATOR
SCALE: N.T.S.

THIS DRAWING MUST NOT BE SCALED.

THE GENERAL CONTRACTOR SHALL VERIFY ALL DIMENSIONS, DATUMS, AND LEVELS PRIOR TO COMMENCEMENT OF WORK. ALL ERRORS AND OMISSIONS TO BE REPORTED TO NUMBER TEN ARCHITECTURAL GROUP BEFORE PROCEEDING.

VARIATIONS AND MODIFICATIONS TO WORK SHOWN ON THESE DRAWINGS SHALL NOT BE CARRIED OUT WITHOUT WRITTEN PERMISSION OF NUMBER TEN ARCHITECTURAL GROUP.

THIS DRAWING IS THE EXCLUSIVE PROPERTY OF NUMBER TEN ARCHITECTURAL GROUP AND THE COPYRIGHT IN THE SAME BEING RESERVED TO THEM. IT MAY BE REPRODUCED ONLY WITH THE PERMISSION OF NUMBER TEN ARCHITECTURAL GROUP, IN WHICH CASE THE REPRODUCTION MUST BEAR THEIR NAME.

REVISED / ISSUED / PLOTTED	DATE
Rev. 1- RE-ISSUED FOR TENDER	MARCH 7/2012
Rev. 0- ISSUED FOR TENDER	NOVEMBER 21/2011

NOTES:

1. ALL ROOF PENETRATIONS AND ABOVE ROOF WIRING SHALL BE COORDINATED WITH ROOFING CONTRACTOR TO GO ON UNDERSIDE OF THE BUILT-UP ROOF.

numberTEN
architectural group

winnipeg MB regina SK victoria BC
204 942.0981 306 721.1501 250 360.2106

architecture • interior design • graphic design

PEGUIS PAVILION
UPGRADES AND ENTRY ADDITION
BIDDING #913-2011

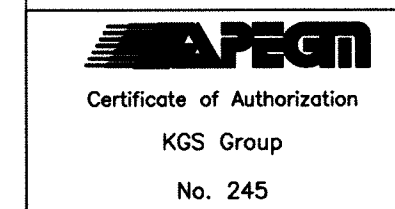
project

MISCELLANEOUS ELECTRICAL DETAILS

sheet title

KGS GROUP | CONSULTING ENGINEERS

consultant



seal
drawn by: GCN
checked by:
project no. 2011026

scale: N.T.S.
date: November 03 2011
sheet no. **E12.0**