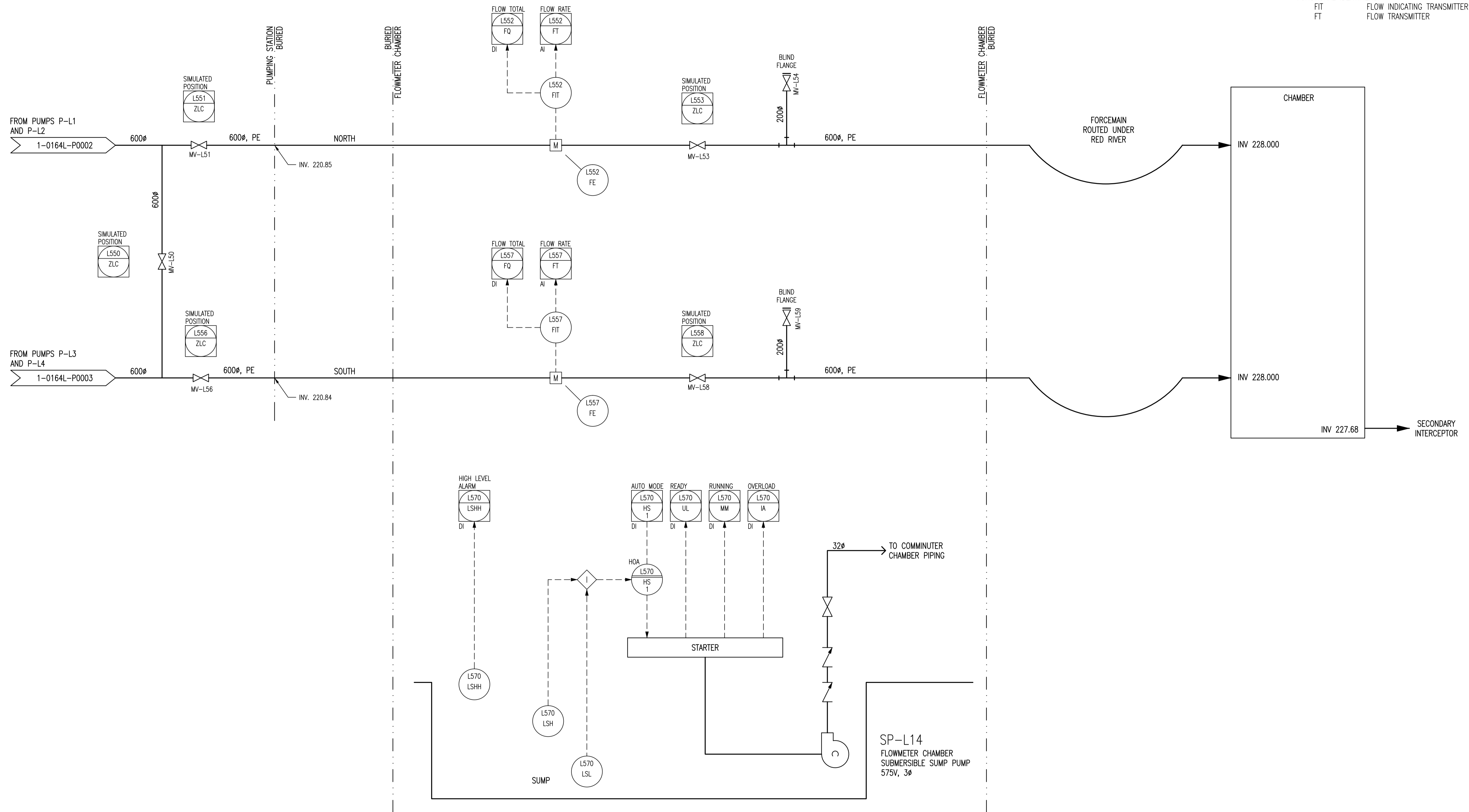


**LEGEND:**

- DEVICE DESCRIPTORS:  
 AI ANALOG INPUT  
 DI DISCRETE INPUT
- FUNCTIONAL IDENTIFIERS:  
 FIT FLOW INDICATING TRANSMITTER  
 FT FLOW TRANSMITTER



**NOTES:**

1. ALL INSTRUMENTS SHOWN IN AN AUXILIARY LOCATION ARE IN THE CORRESPONDING VFD / MOTOR STARTER PANEL.
2. THE FACILITY PREFIX FOR ALL INSTRUMENT IDENTIFIERS IS "MON".



NO.	REVISIONS	DATE	DESIGN	CJR	CJR
00	ISSUED FOR TENDER, BID OPP. 907-2011	2011/11/04	CJR	CJR	

SNC-LAVALIN INC. 148 Nature Park Way Winnipeg, MB, Canada R3P 0X7 204-798-8080	
DESIGNED BY: C. REIMER	CHECKED BY: C. REIMER
DRAWN BY: M.J. PERSSON	APPROVED BY: C. REIMER
SCALE: NTS	RELEASED FOR CONSTRUCTION BY: K. R. ZUREK DATE: 2012/02/23
DATE: 2010/08/19	DATE: 2012/02/23
CONSULTANT NO.: 508042-0000-49DD-0004	

ENGINEER'S SEAL  
 ORIGINAL DRAWING  
 SEALED BY:  
 C. J. REIMER  
 SNC-LAVALIN  
 MEMBER # 21968  
 2011/11/07  
 REV. 00

**THE CITY OF WINNIPEG**  
 WATER AND WASTE DEPARTMENT

WINNIPEG

MONTCALM WASTEWATER PUMPING STATION  
 2011 UPGRADES  
 PROCESS & INSTRUMENTATION DIAGRAM  
 FORCEMAINS AND  
 FLOW METER CHAMBER

CITY DRAWING NUMBER	SHEET	REV.	SIZE
1-0164L-P0004	001	00	A1