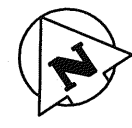
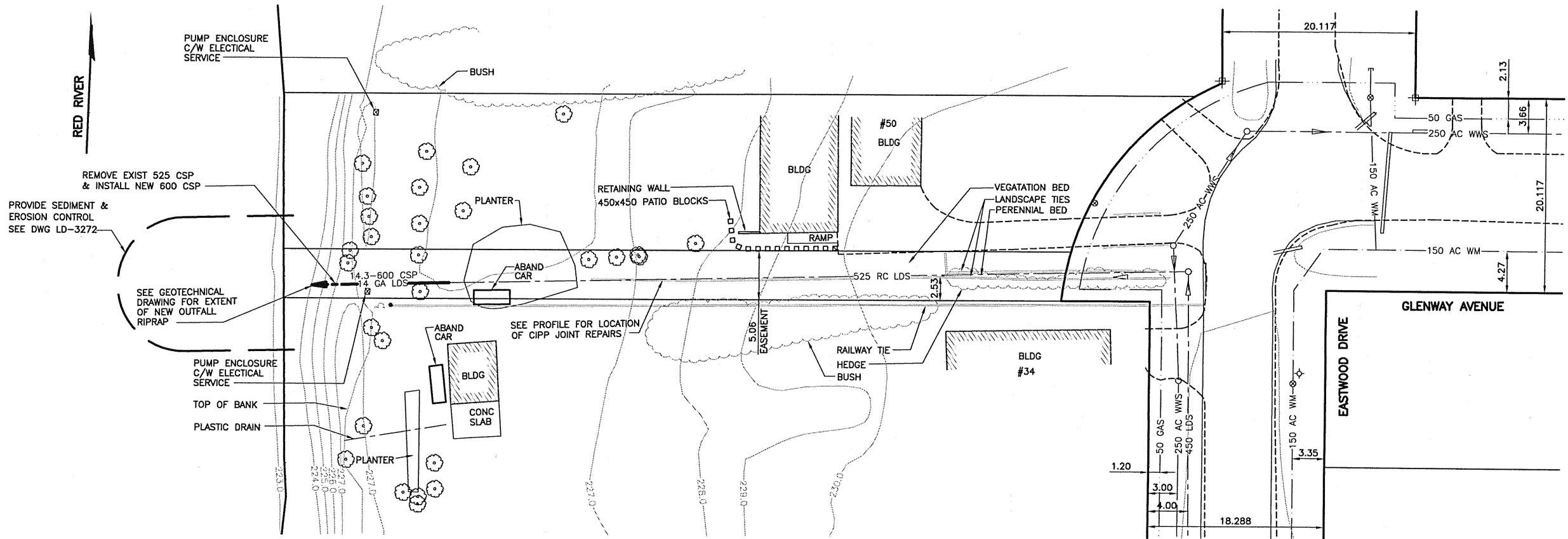
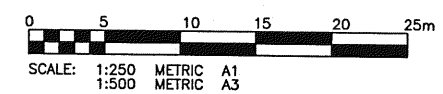


1 DETAIL
SCALE: NTS



WARNING
IF POWER EQUIPMENT OR EXPLOSIVES ARE TO BE USED FOR EXCAVATION ON THIS PROJECT THE CONTRACTOR MUST:
1) NOTIFY THE GAS COMPANY OF THE PROPOSED LOCATION OF EXCAVATION.
2) TAKE PRECAUTION TO AVOID DAMAGE TO GAS COMPANY INSTALLATIONS.
SEE PROVINCIAL REGULATION 210/72 FOR DETAILS.

METRIC
WHOLE NUMBERS INDICATE MILLIMETRES
DECIMALIZED NUMBERS INDICATE METRES



APEGM
Certificate of Authorization
KGS Group
No. 245 Expiry: April 30, 2005

2005\05-0107-11\MAIN\DWGS\OUTFALL-WORKING-DWGS\BID-2-EASTWOOD-PLAN.DWG

EXISTING	LEGEND-PLAN	PROPOSED	EXISTING	LEGEND-PLAN	PROPOSED	EXISTING	LEGEND-PROFILE	PROPOSED
150 WM	WATERMAIN	150 WM	HYDRO	HYDRO	HYDRO			
300 LDS	LAND DRAINAGE SEWER	300 LDS	M.T.S.	M.T.S.	M.T.S.			
250 WWS	WASTE WATER SEWER	250 WWS	PROPERTY LINE	PROPERTY LINE	PROPERTY LINE			
MANHOLE	MANHOLE	MANHOLE	SURVEY BAR	SURVEY BAR	SURVEY BAR			
CATCH BASIN	CATCH BASIN	CATCH BASIN	LIGHT STANDARD	LIGHT STANDARD	LIGHT STANDARD			
CURB INLET	CURB INLET	CURB INLET	HYDRO POLE	HYDRO POLE	HYDRO POLE			
JUNCTIONS	JUNCTIONS	JUNCTIONS	GUY WIRE	GUY WIRE	GUY WIRE			
CULVERT	CULVERT	CULVERT	SIGN	SIGN	SIGN			
GAS	GAS	GAS	BUSH LINE	BUSH LINE	BUSH LINE			
			FENCE	FENCE	FENCE			
			ELEVATION	ELEVATION	ELEVATION			

LOCATION APPROVED UNDERGROUND STRUCTURES
SUPV. U/G STRUCTURES COMMITTEE DATE
NOTE:
LOCATION OF UNDERGROUND STRUCTURES AS SHOWN ARE BASED ON THE BEST INFORMATION AVAILABLE BUT NO GUARANTEE IS GIVEN THAT ALL EXISTING UTILITIES ARE SHOWN OR THAT THE GIVEN LOCATIONS ARE EXACT. CONFIRMATION OF EXISTENCE AND EXACT LOCATION OF ALL SERVICES MUST BE OBTAINED FROM THE INDIVIDUAL UTILITIES BEFORE PROCEEDING WITH CONSTRUCTION.

NO.	REVISIONS	DATE	BY
1	ISSUED FOR TENDER	02/02/05	RJH
0	ISSUED FOR TENDER	23/01/05	RJH
A	ISSUED FOR REVIEW	18/01/05	RJH

KGS GROUP
CONSULTING ENGINEERS & PROJECT MANAGERS
WINNIPEG (204) 896-1209
THUNDER BAY (807) 345-2233

DESIGNED BY	RJH	CHECKED BY	RJH
DRAWN BY	DMW	APPROVED BY	
HOR. SCALE: 1:250		RELEASED FOR CONSTRUCTION:	
VERTICAL: 1:50		DATE	
DATE	12/09/05	DATE	

ENGINEER'S SEAL
PROVINCE OF MANITOBA
R.J. HOUSTON
Member
4305
REGISTERED PROFESSIONAL ENGINEER

THE CITY OF WINNIPEG
WATER & WASTE DEPARTMENT
Winnipeg

EASTWOOD OUTFALL
EASTWOOD DRIVE OUTFALL (RR-108)

SHEET **04** OF **06**
CAD FILE DRAWING NUMBER **05-0107-11**
CITY DRAWING NUMBER **LD-3270**

CONSULTANT DRAWING NO. **05-0107-11_04**