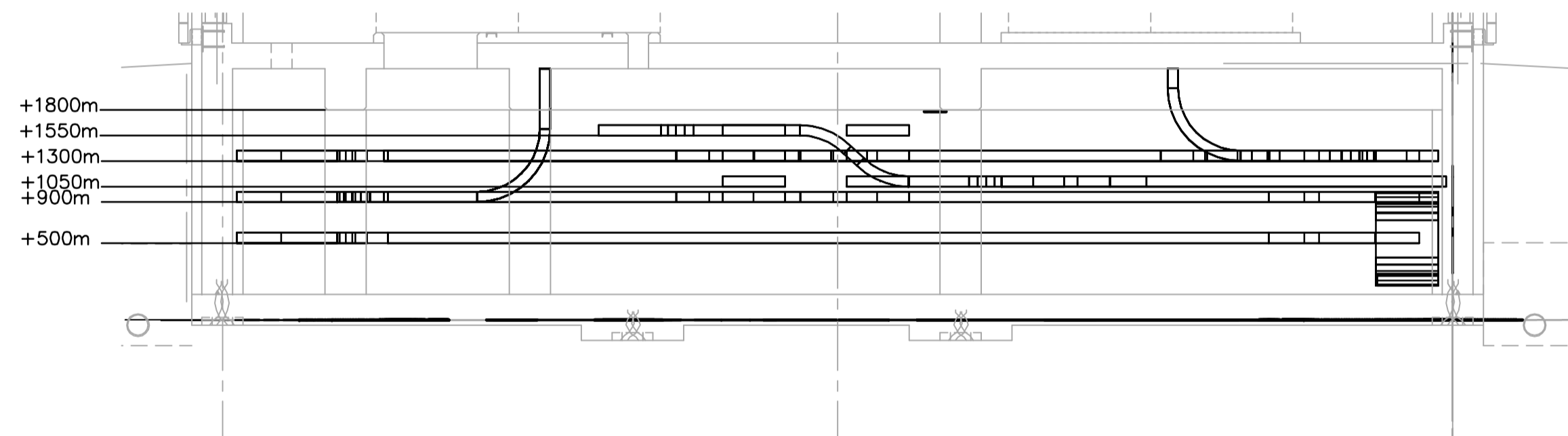
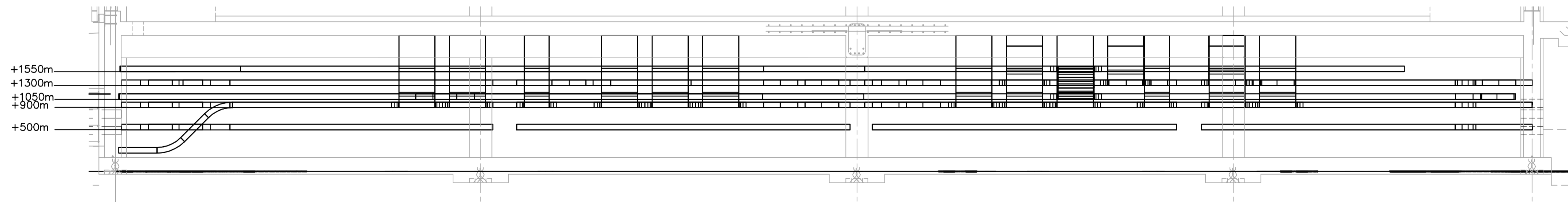


**CRAWLSPACE FLOOR PLAN**  
1:100



**A SECTION**  
WG-E0102 1:50



**B SECTION**  
WG-E0102 1:50

**DRAWING NOTES**

① REFER TO SHOP DRAWINGS OF CITY SUPPLIED EQUIPMENT SPECIFIED IN D2 FOR CABLE REQUIREMENTS. TECK CABLES SHALL BE USED IN PLACE OF METALLIC CONDUITS.

**APECM**  
Certificate of Authorization  
Earth Tech Canada Inc.  
No. 730 Expiry: April 30, 2007

NO.	REVISIONS	DATE	BY
03	498-2006 ADDENDUM 7	06/10/19	ERC
02	498-2006 ADDENDUM 4	06/10/10	ERC
01	498-2006 ADDENDUM 3	06/09/29	ERC
00	ISSUED FOR TENDER	06/08/30	ERC

<b>CH2M HILL</b> Frederickson Cooper ARCHITECTS		<b>EarthTech</b> A Teck International Ltd. Company	
DESIGNED BY	BLM	CHECKED BY	PS
DRAWN BY	ERC	APPROVED BY	AHL
SCALE:	AS SHOWN	RELEASED FOR CONSTRUCTION BY:	R. SOROKOWSKI
DATE	2006/06/13	DATE	2006/08/30

ENGINEER'S SEAL  
ORIGINAL SIGNED BY  
B.L. MOORE  
2006/08/30  
CONSULTANT DRAWING NO.  
WG-E0102

**THE CITY OF WINNIPEG**  
WATER AND WASTE DEPARTMENT  
ENGINEERING DIVISION

WATER TREATMENT PLANT  
STANDBY POWER GENERATOR  
GENERATOR BUILDING

ELECTRICAL  
CRAWLSPACE POWER PLAN AND SECTIONS

CITY FILE NUMBER  
SHEET OF  
CITY DRAWING NUMBER  
1-0601G-A-E0102-001-030