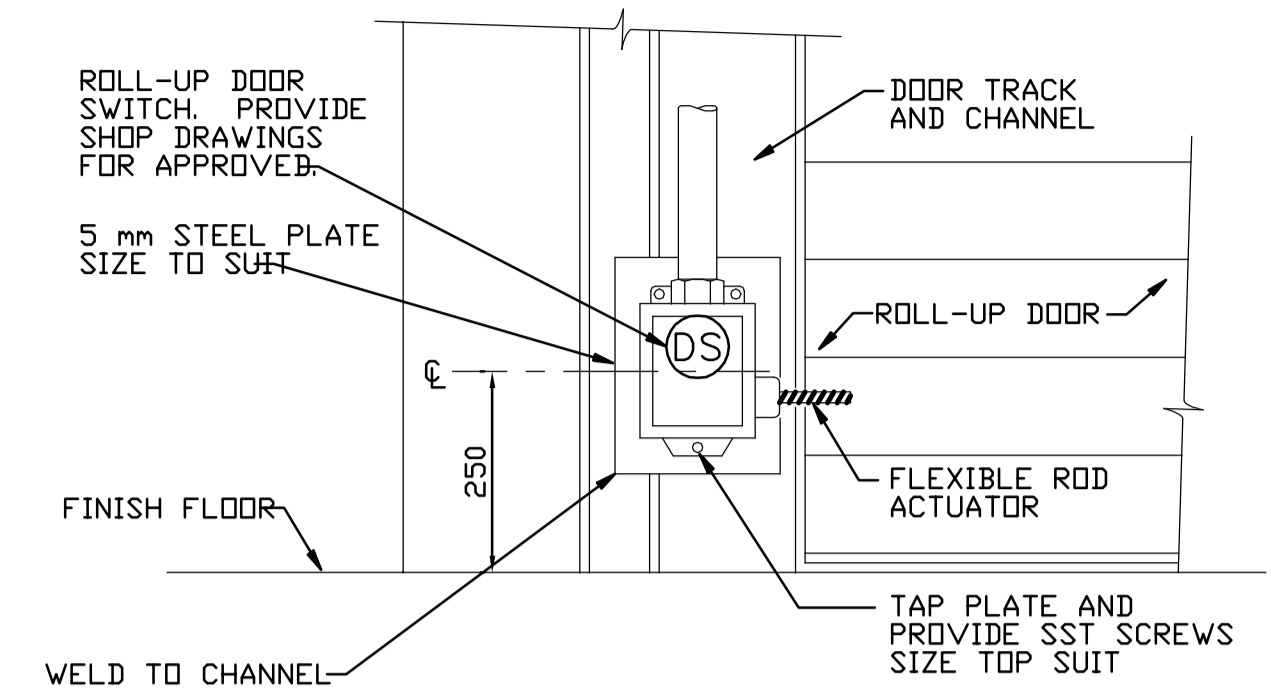
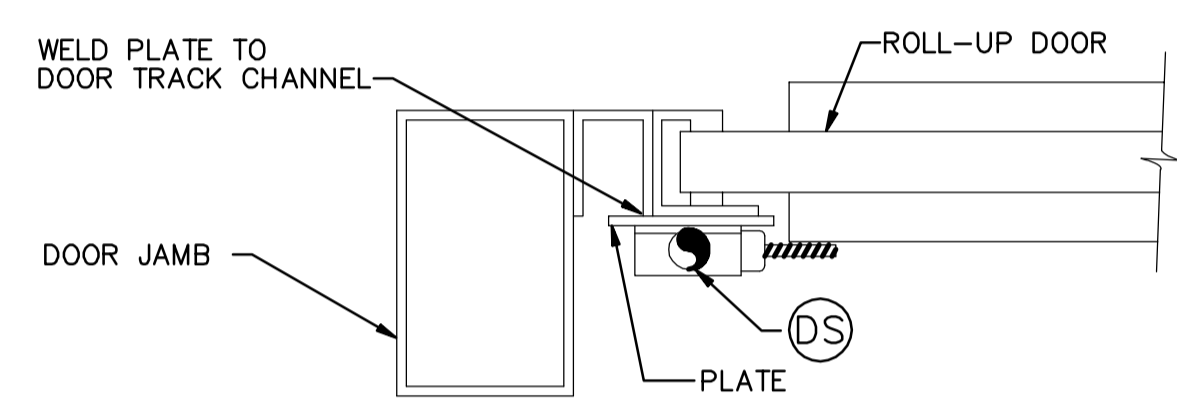


**1** TYPICAL MOTOR CONNECTION DETAIL  
- N.T.S.



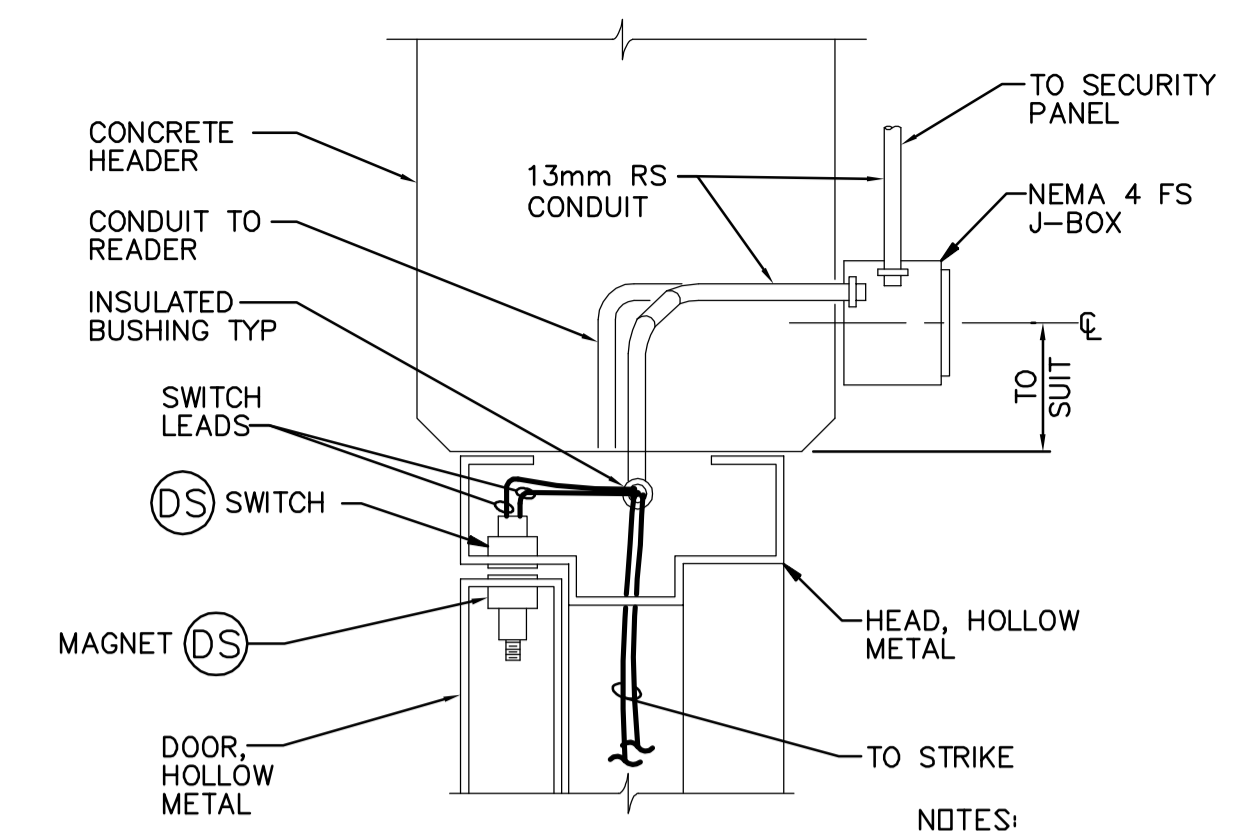
**ELEVATION**



**PLAN**

NOTE:  
1. VERIFY DOOR AND JAMB ON ARCHITECTURAL PLANS AND SHOP DRAWINGS.

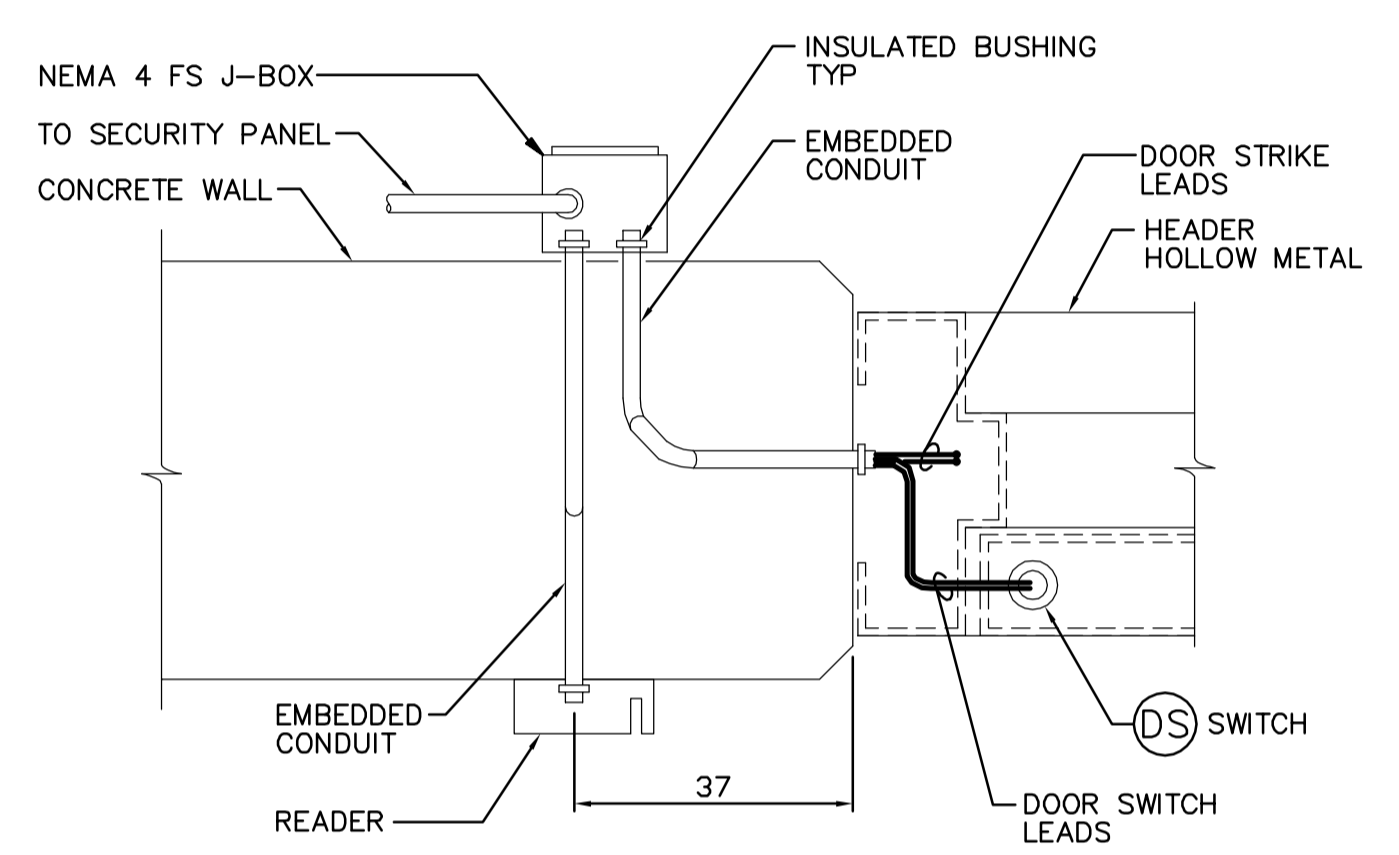
**4** DETAIL ROLL-UP DOOR  
- N.T.S.



**ELEVATION**

NOTES:  
1. FOR DOOR AND HEAD SIZE REQUIREMENTS, SEE ARCHITECTURAL DETAILS.  
2. SPDT CONTACTS INSTALL SWITCH AND MAGNET IN STRICT ACCORDANCE TO MANUFACTURERS INSTRUCTIONS.

TYPICAL COMPONENTS: SIMPLEX TIME RECORDER COMPANY 2760 SERIES MAGNETIC CONTACT SWITCHES.

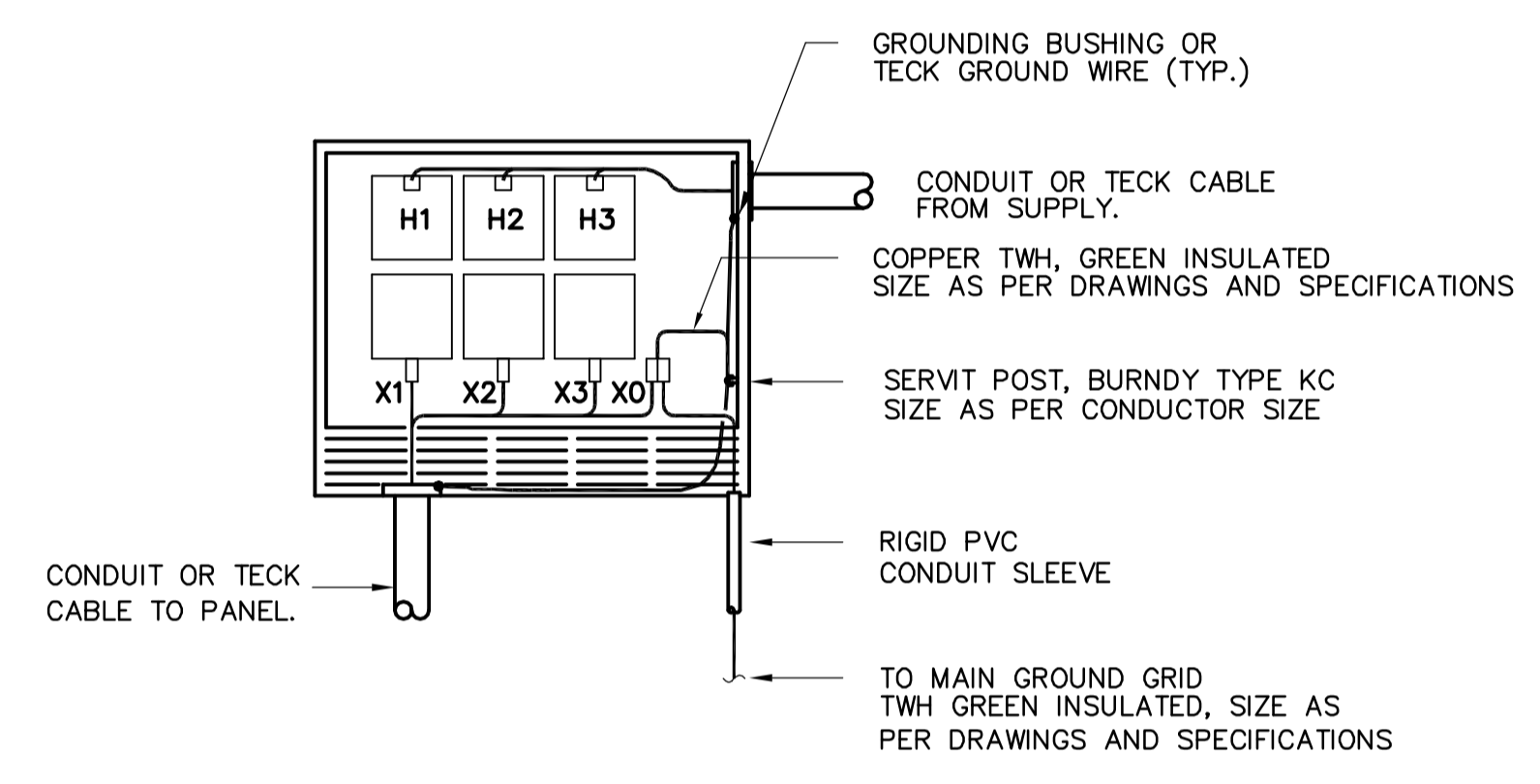


**PLAN**

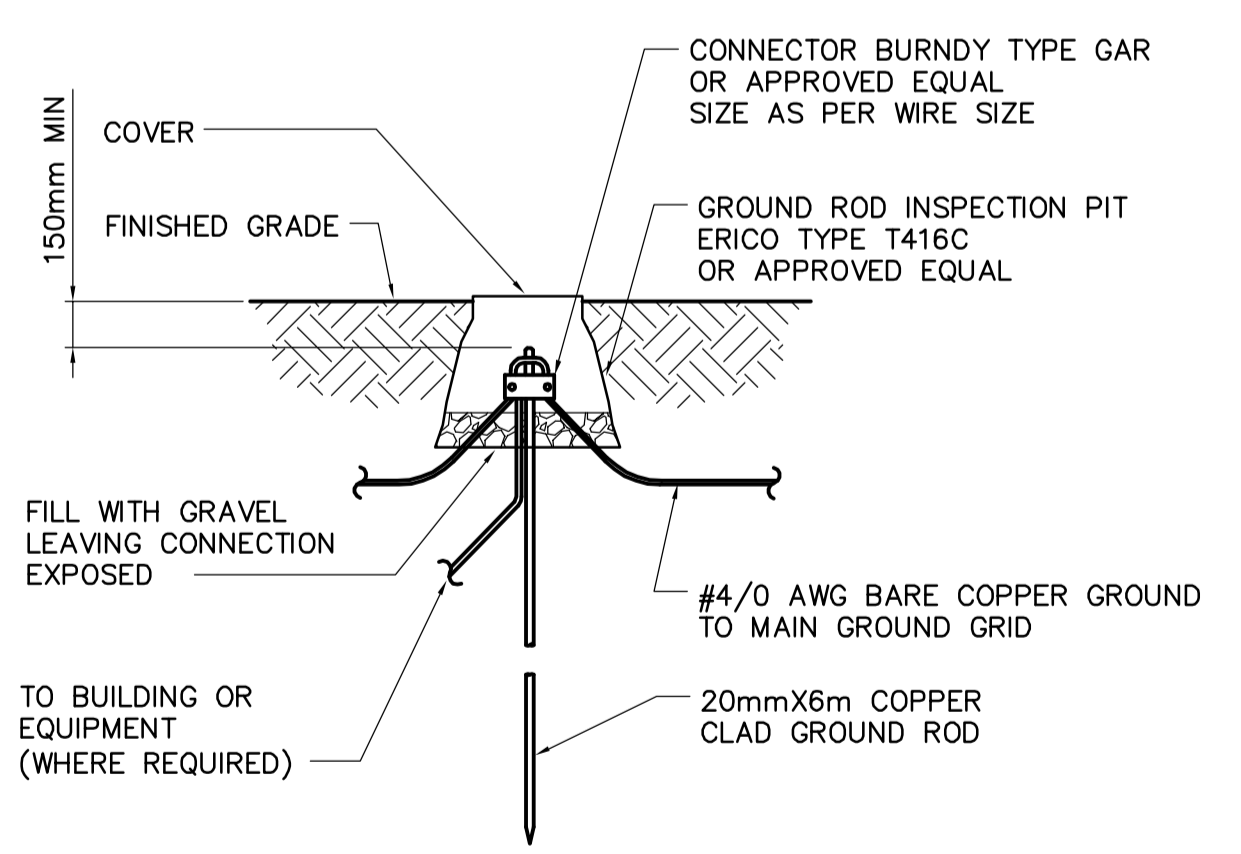
NOTES:  
1. FOR DOOR AND HEAD SIZE REQUIREMENTS, SEE ARCHITECTURAL DETAILS.  
2. SPDT CONTACTS INSTALL SWITCH AND MAGNET IN STRICT ACCORDANCE TO MANUFACTURERS INSTRUCTIONS.

TYPICAL COMPONENTS: SIMPLEX TIME RECORDER COMPANY 2760 SERIES MAGNETIC CONTACT SWITCHES.

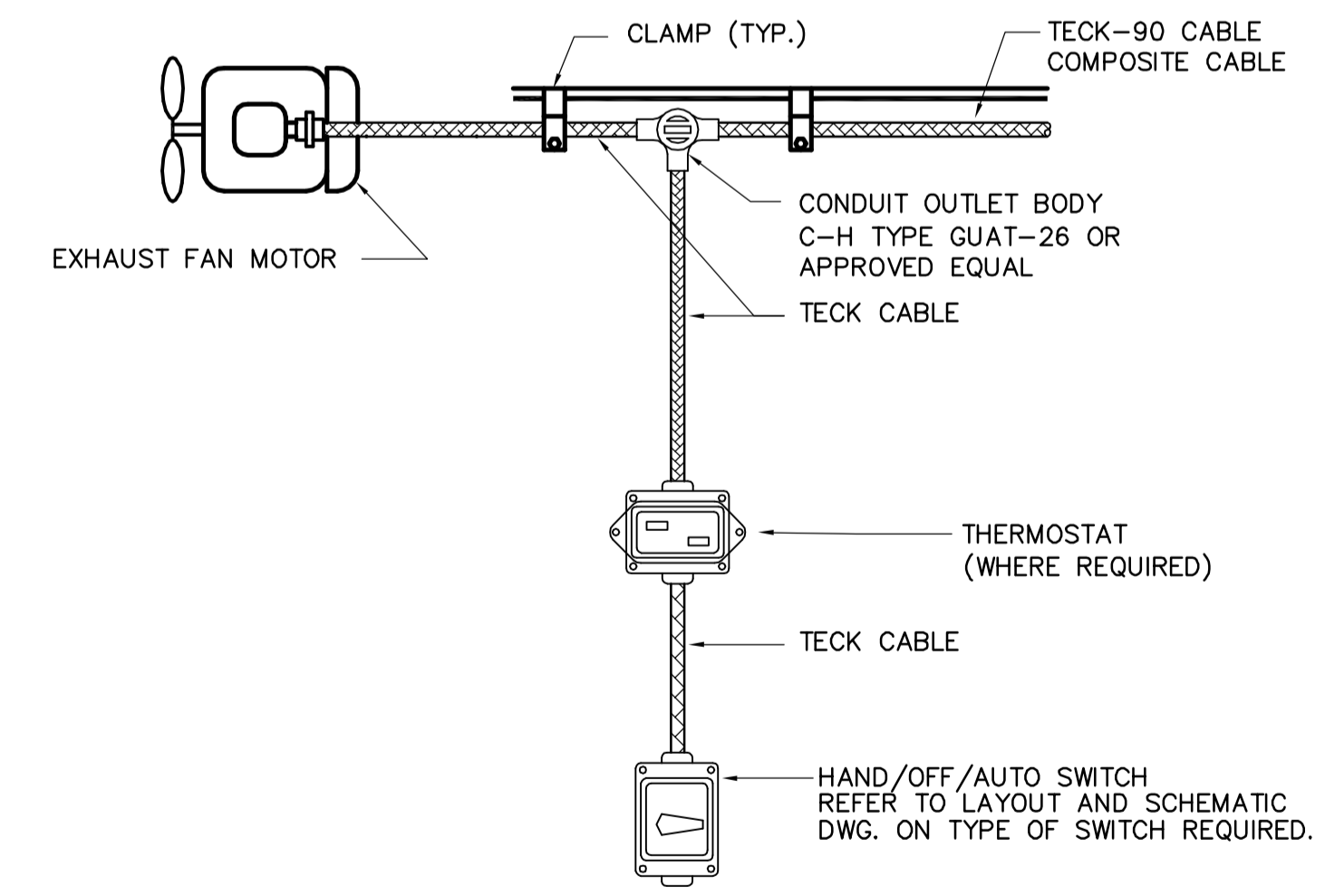
**6** DETAIL DOOR JAMB  
- N.T.S.



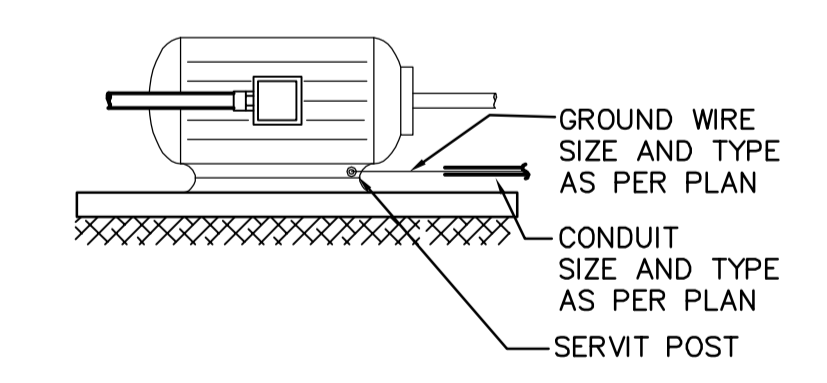
**2** TYPICAL DRY TYPE TRANSFORMER GROUNDING DETAIL  
- N.T.S.



**3** GROUND ROD INSPECTION WELL DETAIL  
- N.T.S.



**5** EXHAUST FAN THERMOSTAT CONNECTION DETAIL  
- N.T.S.



**7** TYPICAL MOTOR GROUNDING DETAIL  
- N.T.S.

|   |               |                                       |                                       |                 |   |                               |                  |                        |                         |
|---|---------------|---------------------------------------|---------------------------------------|-----------------|---|-------------------------------|------------------|------------------------|-------------------------|
| <br><b>Certificate of Authorization</b><br>Earth Tech Canada Inc.<br>No. 730 Expiry: April 30, 2007 | B.M. ELEV.    | <br>Frederickson Cooper<br>ARCHITECTS | <br>A Tech International Ltd. Company | ENGINEER'S SEAL | <br><b>THE CITY OF WINNIPEG</b><br>WATER AND WASTE DEPARTMENT<br>ENGINEERING DIVISION | ORIGINAL SIGNED BY            | CITY FILE NUMBER |                        |                         |
|   |               |                                       |                                       | DESIGNED BY     |   | CHECKED BY                    |                  | B.L. MOORE             | SHEET OF                |
|   |               |                                       |                                       | DRAWN BY        |   | APPROVED BY                   |                  | 2006/10/17             | CITY DRAWING NUMBER     |
|   |               |                                       |                                       | SCALE:          |   | RELEASED FOR CONSTRUCTION BY: |                  | CONSULTANT DRAWING NO. | 1-06010-D-E0451-001-000 |
|   | NO. REVISIONS | DATE                                  | DATE                                  | WG-E0451        |   |                               |                  |                        |                         |
|   | 0             | 498-2006 ADDENDUM 6                   | 06/10/17                              | ERC             | 2006/10/10  | R. SOROKOWSKI                 | 2006/10/17       |                        |                         |