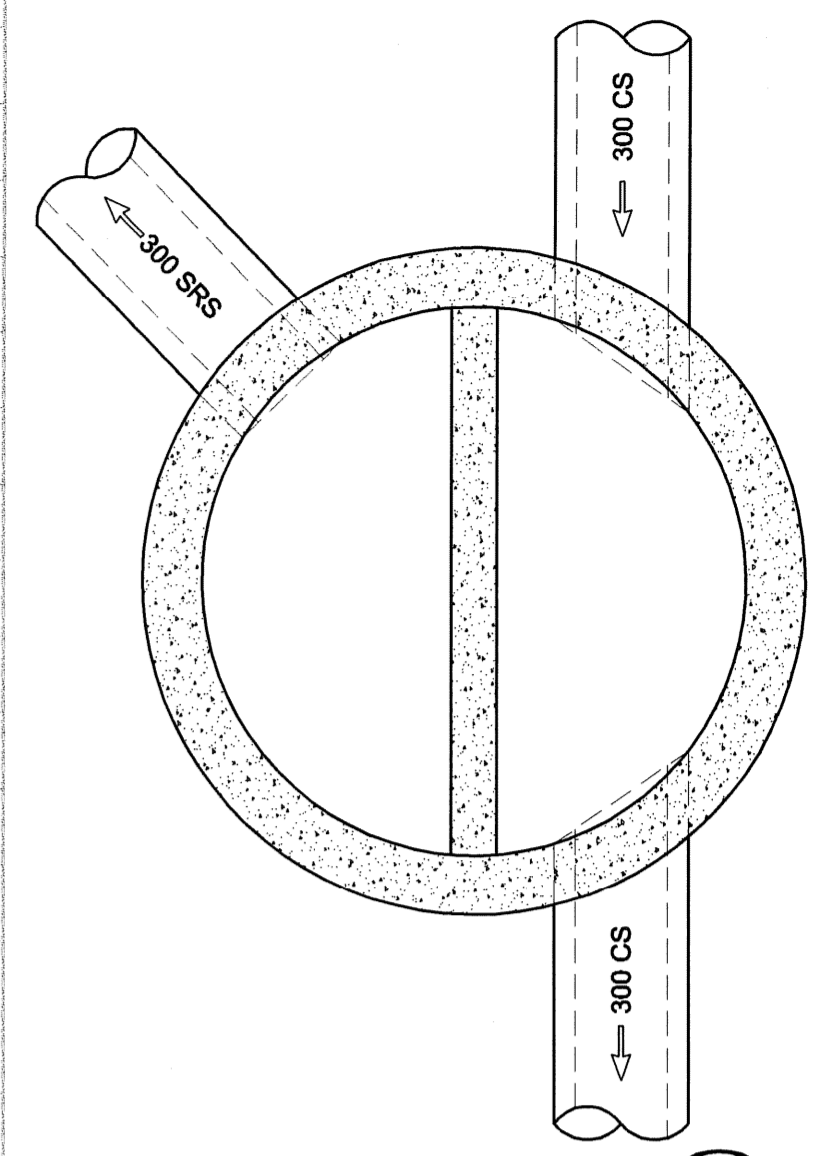
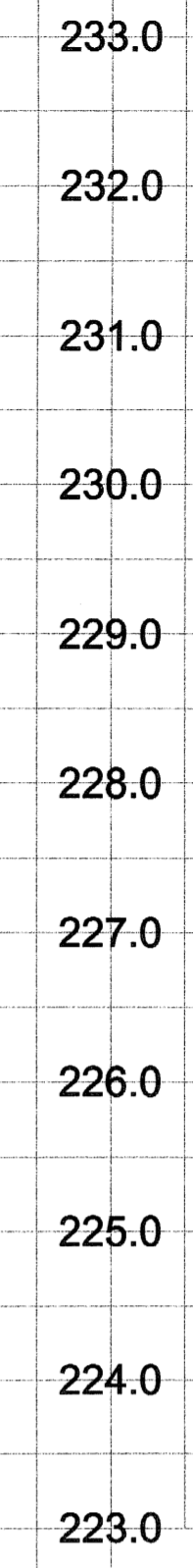
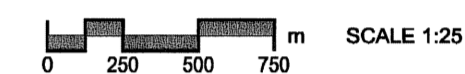


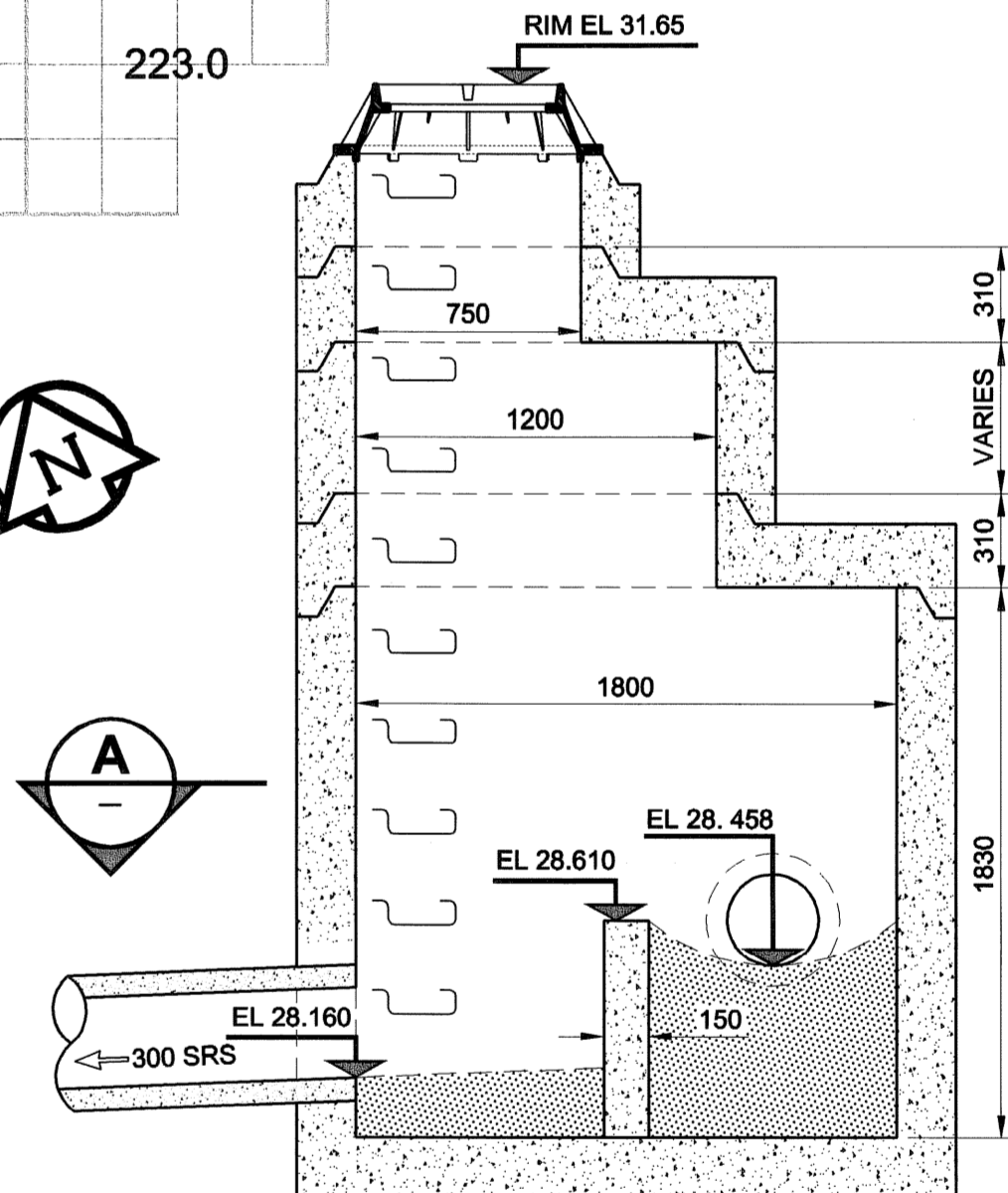
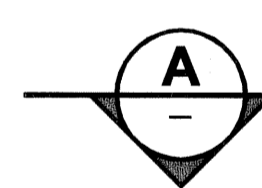
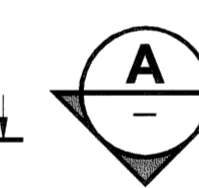
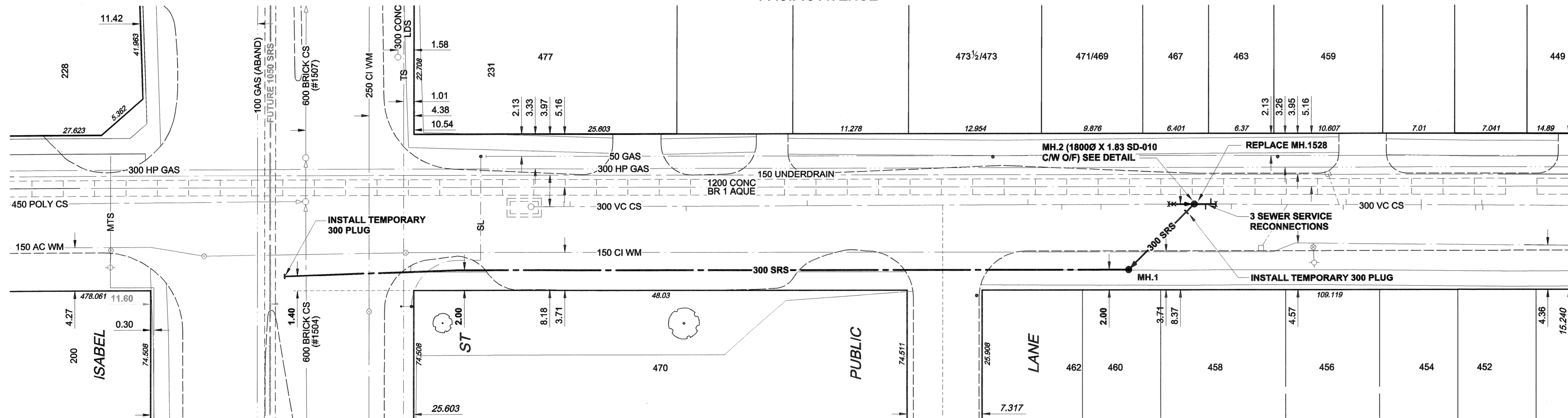
CHAINAGE ALONG S PL



SECTION A



PACIFIC AVENUE



MANHOLE 2 OVERFLOW DETAIL



TYPICAL MANHOLE REQUIREMENTS AS PER SD-010

CONSTRUCTION NOTES:

- FOR DETAILED TEST HOLE INFORMATION, SEE SPECIFICATION.
- THE LOCATION OF ALL SERVICES IS TO BE CONFIRMED IN THE FIELD.
- INSTALL NEW SEWERS AND CATCHBASIN LEADS BY TRENCHLESS METHODS WHEREVER POSSIBLE.
- RENEW/REHABILITATE CATCHBASINS & RENEW CATCHBASIN LEADS WHERE NOTED.
- CONTACT THE WATER AND WASTE DEPARTMENT CONSTRUCTION SERVICES CO-ORDINATOR, ANDY VINCENT, AT 986-3823 A MINIMUM OF 7 DAYS PRIOR TO CROSSING OR WORKING ADJACENT TO AQUEDUCT TO ARRANGE FOR INSPECTION.

BID OPPORTUNITY NO. 299-2006

WARNING

IF POWER EQUIPMENT OR EXPLOSIVES ARE TO BE USED FOR EXCAVATION ON THIS PROJECT, THE CONTRACTOR MUST:

- NOTIFY THE GAS COMPANY OF THE PROPOSED LOCATION OF EXCAVATION.
- TAKE PRECAUTION TO AVOID DAMAGE TO GAS COMPANY INSTALLATIONS.

SEE PROVINCIAL REGULATION 140/92 FOR DETAILS

EXISTING	LEGEND - PLAN	NEW	EXISTING	LEGEND - PLAN	NEW	EXISTING	LEGEND - PROFILE	NEW
150 mm WM	WATERMAIN	150 mm WM	150 mm WM	WATERMAIN	150 mm WM	150 mm WM	WATERMAIN	150 mm WM
300 mm LDS	LAND DRAINAGE SEWER	300 mm LDS	300 mm LDS	LAND DRAINAGE SEWER	300 mm LDS	300 mm LDS	LAND DRAINAGE SEWER	300 mm LDS
250 mm WWS	WASTE WATER SEWER	250 mm WWS	250 mm WWS	WASTE WATER SEWER	250 mm WWS	250 mm WWS	WASTE WATER SEWER	250 mm WWS
○	MANHOLE	●	○	MANHOLE	●	○	MANHOLE	●
□	CATCH BASIN	■	□	CATCH BASIN	■	□	CATCH BASIN	■
△	CURB INLET	▲	△	CURB INLET	▲	△	CURB INLET	▲
▭	CULVERT	▭	▭	CULVERT	▭	▭	CULVERT	▭
—	PIPE ABANDONMENTS	—	—	PIPE ABANDONMENTS	—	—	PIPE ABANDONMENTS	—
+	SURVEY BAR	+	+	SURVEY BAR	+	+	SURVEY BAR	+
○	HYDRANT	●	○	HYDRANT	●	○	HYDRANT	●
○	VALVE	○	○	VALVE	○	○	VALVE	○
○	ANODE	○	○	ANODE	○	○	ANODE	○
○	HYDRO	○	○	HYDRO	○	○	HYDRO	○
○	MTS	○	○	MTS	○	○	MTS	○
○	GAS	○	○	GAS	○	○	GAS	○
○	TESTHOLE	○	○	TESTHOLE	○	○	TESTHOLE	○
○	LAMP STANDARD	○	○	LAMP STANDARD	○	○	LAMP STANDARD	○
○	TREE	○	○	TREE	○	○	TREE	○

LOCATION APPROVED UNDERGROUND STRUCTURES

DATE COMMITTEE

NOTE: LOCATION OF UNDERGROUND STRUCTURES AS SHOWN ARE BASED ON THE BEST INFORMATION AVAILABLE. BUT NO GUARANTEE IS GIVEN THAT ALL EXISTING UTILITIES ARE SHOWN OR THAT THE GIVEN LOCATIONS ARE EXACT. CONFIRMATION OF EXISTENCE AND EXACT LOCATION OF ALL SERVICES MUST BE OBTAINED FROM THE INDIVIDUAL UTILITIES BEFORE PROCEEDING WITH CONSTRUCTION.

NO.	REVISIONS	DATE	BY
A	REVISED AS PER CITY COMMENTS	06/06/12	KMB
0	ISSUED FOR CONSTRUCTION	06/05/11	KMB

DESIGNED BY	GEB	CHECKED BY	[Signature]
DRAWN BY	KMB	APPROVED BY	[Signature]
HOR. SCALE	1:250	RELEASED FOR CONSTRUCTION	[Signature]
VERT. SCALE	1:50	DATE	June 12, 2012

METRIC
WHOLE NUMBERS INDICATE MILLIMETRES
DECIMALIZED NUMBERS INDICATE METRES

UMA | AECOM

© 2005 UMA ENGINEERING LTD. ALL RIGHTS RESERVED.

PROFESSIONAL'S SEAL
PROVINCE OF MANITOBA
A. NAGY
June 12, 2012
REGISTERED PROFESSIONAL ENGINEER

CONSULTANT DRAWING NO. 09
D265-177-03

THE CITY OF WINNIPEG
WATER AND WASTE DEPARTMENT

ALEXANDER/BANNATYNE
COMBINED SEWER RELIEF
CONTRACT 3

PACIFIC AVENUE
ISABEL STREET
TO 170m WEST OF ELLEN STREET

SHEET 12 OF 14
CITY DRAWING NUMBER
LD-2661 A

REV