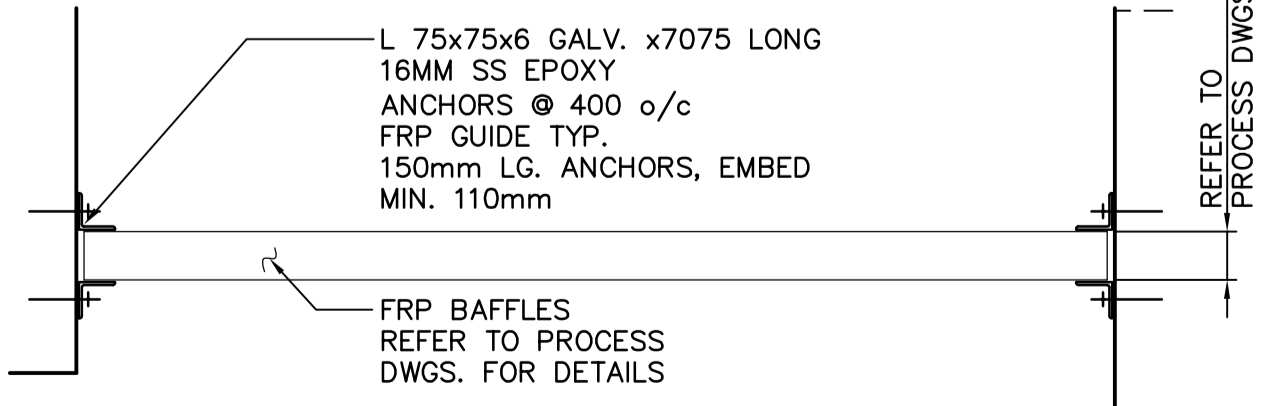
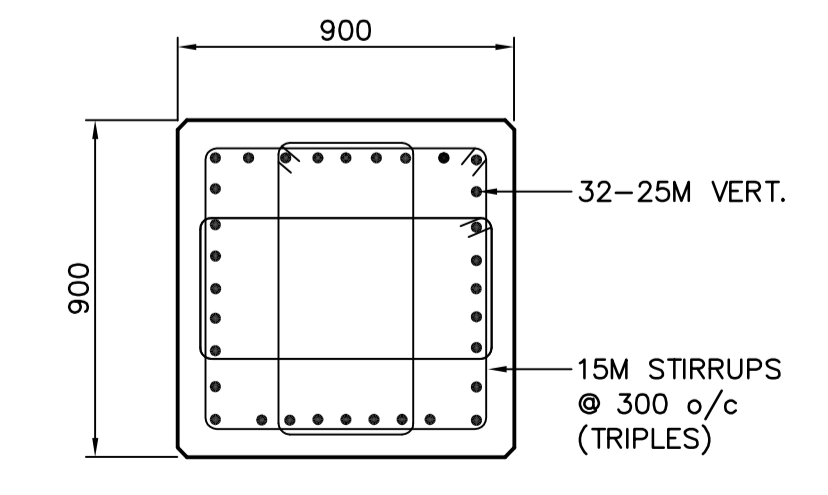


C FOUNDATION PLAN ABOVE EL. 230.000
 SCALE 1:125

NOTE:
 1.) ON LIQUID SIDE OF CAST-IN-PLACE CONCRETE FOR EQUALIZATION TANK, SBR-1 AND SBR-2 COATING FORMULA 10



A PLAN DETAIL
 SCALE NTS



B PLAN DETAIL EP-1 & EP-2
 SCALE 1:20



| | | | | | |
|---------------|----------|-------------------------------|------------|------------|------------|
| B.M. ELEV. | | | | | |
| DESIGNED BY | LLR | CHECKED BY | GGP | | |
| DRAWN BY | WDB | APPROVED BY | JEH | | |
| SCALE: | AS NOTED | RELEASED FOR CONSTRUCTION BY: | K. MARTENS | | |
| NO. REVISIONS | DATE | BY | DATE | 2005/11/23 | 2006/05/15 |

ENGINEER'S SEAL
 ORIGINAL SIGNED BY
 L.L. RIDING
 2006/05/15
 CONSULTANT DRAWING NO.
 S2.02

THE CITY OF WINNIPEG
 WATER AND WASTE DEPARTMENT
 ENGINEERING DIVISION

NEWPCC CENTRATE NUTRIENT TREATMENT
 NITROGEN REMOVAL FACILITY

STRUCTURAL
 SBR BUILDING
 FOUNDATION PLAN ABOVE EL. 230.000

CITY FILE NUMBER
 SHEET OF
 CITY DRAWING NUMBER
1-001C-A-90002-001-0D