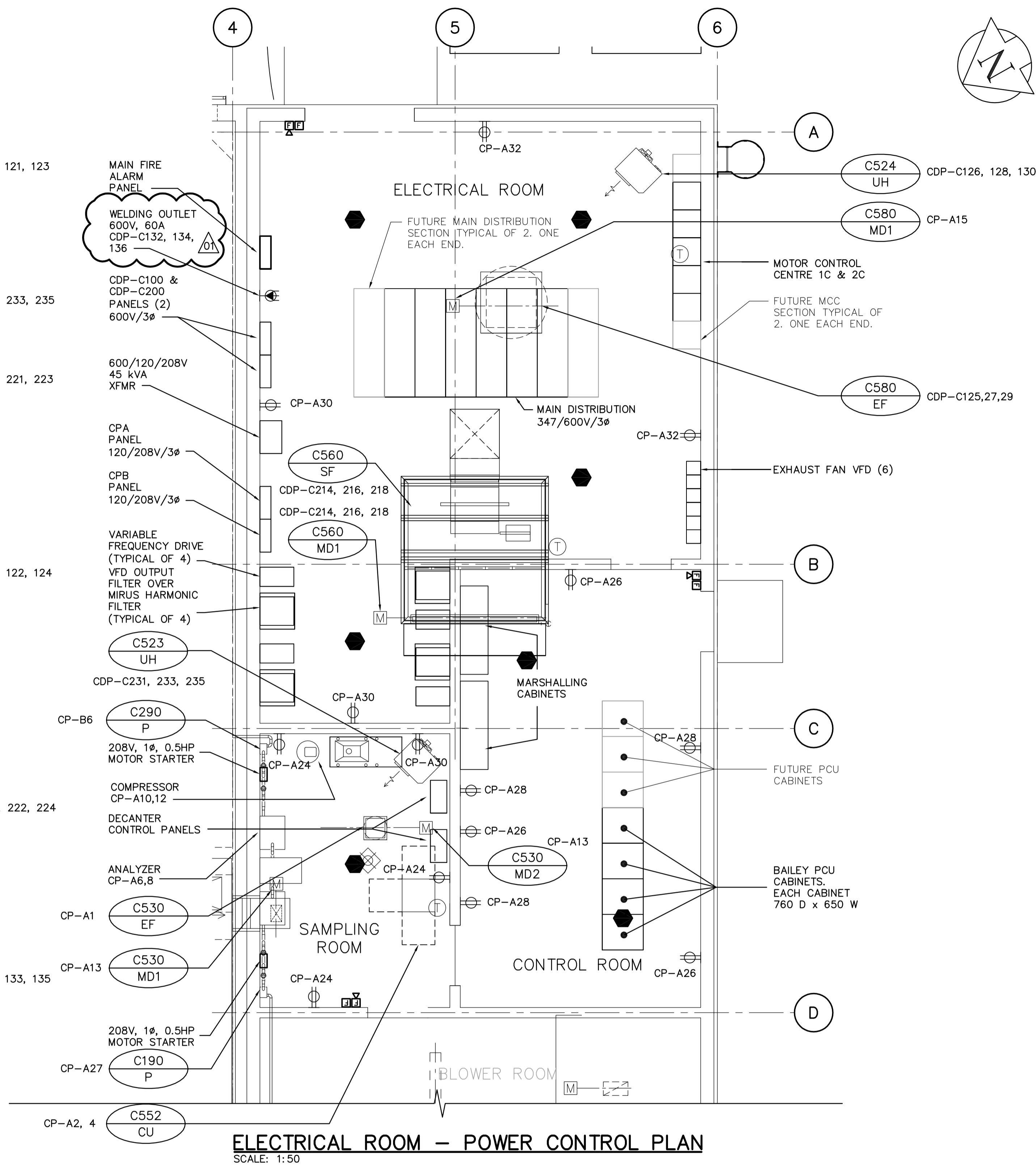


BLOWER ROOM - POWER CONTROL PLAN
SCALE: 1:50



ELECTRICAL ROOM - POWER CONTROL PLAN
SCALE: 1:50

NOTES:
1. OVERHEAD DOOR #1 (O/H DOOR #1) SHALL BE SUPPLIED AND INSTALLED BY O/H DOOR SUPPLIER. ELECTRICAL SUBCONTRACTOR TO PROVIDE DISCONNECT SWITCH AND CONNECT DOOR MOTOR. ALL CONTROLS TO BE PART OF DOOR SUPPLY.

| | | | | | | |
|---|---|--|-----------------|---|-----------------------------|------------------------------|
| <p>Certificate of Authorization Earth Tech Canada Inc. No. 730 Expiry: April 30, 2007</p> | B.M. ELEV. | <p>A Tyco International Ltd. Company</p> | ENGINEER'S SEAL | <p>THE CITY OF WINNIPEG WATER AND WASTE DEPARTMENT ENGINEERING DIVISION</p> | | |
| | | | DESIGNED BY PS | | ORIGINAL SIGNED BY P. STRYK | |
| | | | DRAWN BY CPG | | CHECKED BY GSN | 2005/05/15 |
| | | | SCALE: 1:50 | | APPROVED BY JEH | CONSULTANT DRAWING NO. E2.04 |
| | 01 291-2006 ADDENDUM 3 06/07/12 CPG | RELEASED FOR CONSTRUCTION BY: K. MARTENS | | | | |
| | 00 ISSUED FOR TENDER 06/05/15 CPG | | | | | |
| | NO. REVISIONS DATE BY DATE 2006/02/23 DATE 2006/05/23 | | | | | |